



MISSOURI Land & Farm

www.missourilandandfarm.com • Office: 660-258-3185 • Fax: 660-258-2082

103 Acres of Saline County Hunting/CRP

145th Road, Sweet Springs, MO 65351

Saline County

\$242,000



CONTACT:



JEFFREY QUINN

Broker

660-734-3925

jquinn@missourilandandfarm.com



Serious Whitetail Hunters know that when you find a large tract of big cover you will find bucks. When you find a place like this in MO you will find big ones.

If your looking for a whitetail heaven this place checks all the boxes:

Perfectly located on a Dead End Road!!!

Mature Timber & Dense Underbrush!!!

Tillable, CRP and Food plot acreages!!!

Salt Pond Creek Travel Corridor!!!

You will be hard pressed to find a better mix of desirable traits for Whitetails and Turkey.

The farm is bordered by WRP and parts of it lay favorably for waterfowl development with flooded marsh, flooded woods, and buck brush potential.

18.84 Acres have recently been signed up for CRP paying \$141/Acre of \$2656.44 in yearly income.

Farm lays less than 1 hour from KC

This is the perfect recreational farm with income. Call Jeff Quinn today 1-660-734-3925

Taxes: Approximately \$80



United States
Department of
Agriculture

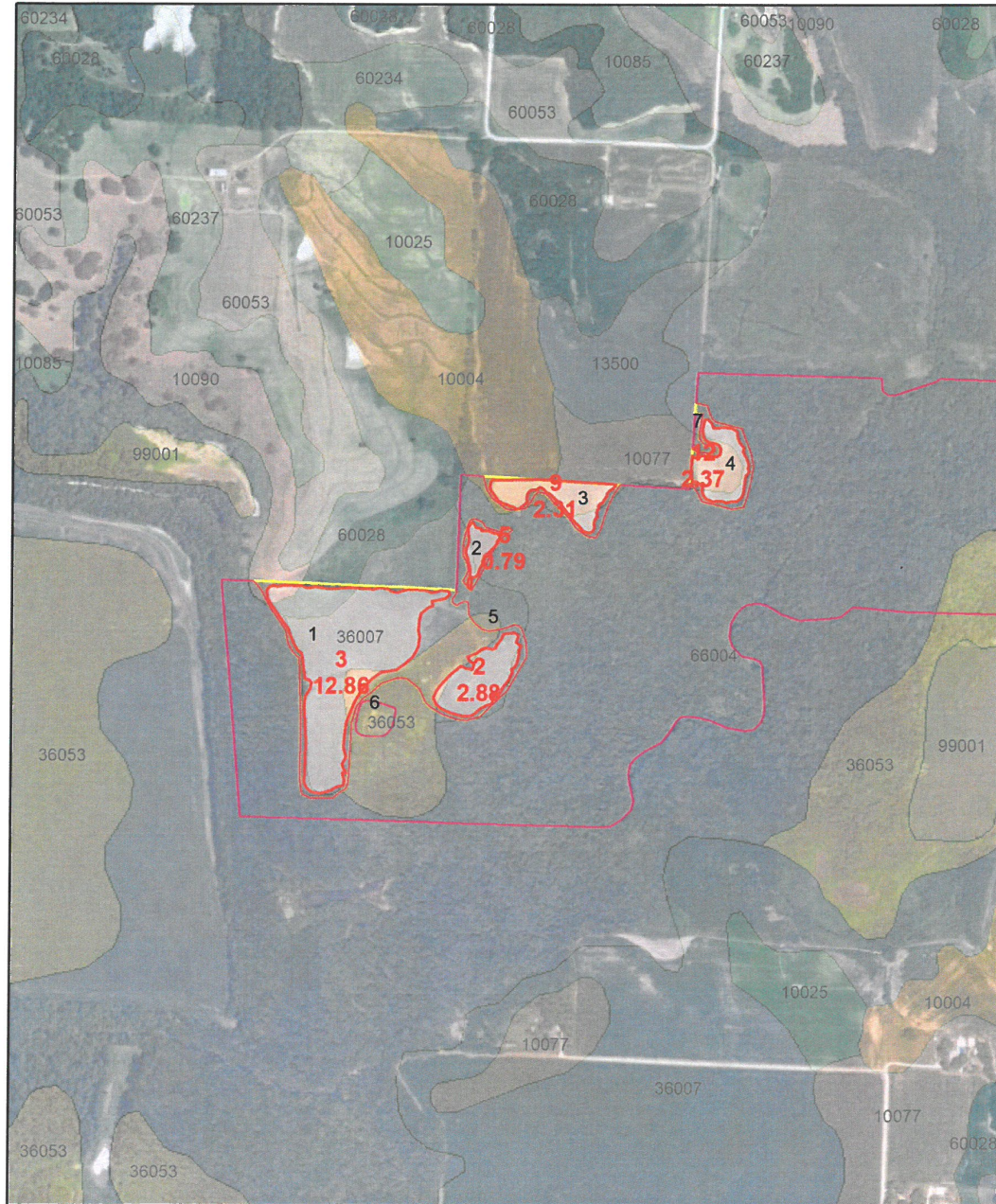
Environmental Resource Results Assessment

Scenario Map

Continuous Signup 53

Scenario Name: MONTGOMERY (1)

Tract: 330



0 2,600 Feet

#: Scenario ID
#.00: Scenario Acres
#: CLU Number

Scenario_Polygon
Cropland
Not Cropland

Aerial Map



Map Center: 38° 59' 31.23, -93° 26' 16.09



Maps Provided By:
 **surety**
CUSTOMIZED ONLINE MAPPING
© AgriData, Inc. 2020 www.AgriDataInc.com

34-49N-23W
Saline County
Missouri



"We'll Keep You Warm"
Farm • Home • Business
"✓Our Prices Before Your
Next Fill Up"

BRYAN'S PROPANE

24 Hour Service
Mon - Fri • 8 - 5
Family Owned
&
Operated

Bottles
Filled

660-
886-5566

After Hours: 660-631-2371 • Cell Phone: 660-631-2371 • 612 N. Miami • Marshall

TOWNSHIP 49N • RANGE 23W

