



# MISSOURI Land & Farm

www.missourilandandfarm.com • Office: 660-258-3185 • Fax: 660-258-2082

**136.3 Acres Linn  
County-Hunting-Income-Building Sites**  
Katy Rd, Koner Rd

Linn

**\$851,875**

-5 MILES EAST OF BROOKFIELD MO

**136.3 Acres For Sale**

BROOKFIELD, LINN COUNTY MO



**\$6,250/ACRE**



**TAMMY AMER**

660-734-2029

"WE KNOW LAND"



**& HOMES!!**

\*INCOME\*ROAD ACCESS

\*BUILDING SITES

\*HUNTING

\*BROOKFIELD SCHOOL DISTRICT

\*SALE SUBJECT TO SURVEYED ACRES

**CONTACT:**



**TAMMY AMER**

Sales

660-734-2029

tamer@missourilandandfarm.com



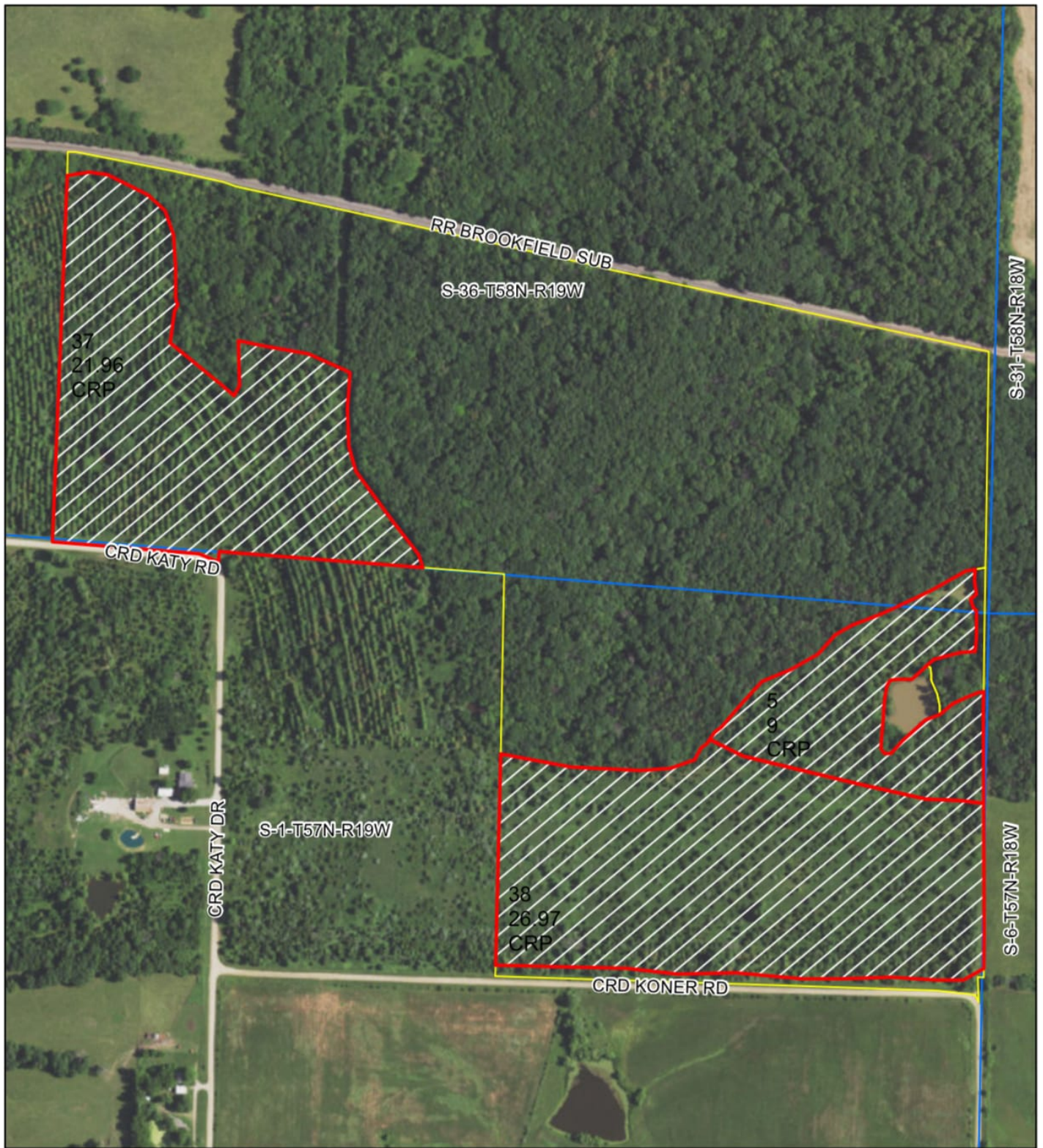
136 M/L Acre tract Available -For Sale, Linn County MO

Subject to be surveyed. This 136 m/l Acre tract brings in approx. over \$5,000 annually until 2027. Located just 5 miles east of Brookfield. Interested in hunting big deer, you'll notice the thick cover provided by the income producing tree program a perfect complement to the majority of mature timber. Turkey hunting in this stretch North of the Highway 36 corridor is some of the best in the area.

The farm offers convenient access yet is perfectly secluded with great potential for a country building site. Brookfield R-3 school district. Can be divided.

Priced at \$6,250/acre. Call Tammy Amer @660-734-2029





All Measurements are  
For FSA Programs Only

Linn Co. FSA

1:5,280



**Wetland Determination Identifiers**

- Restricted Use
- ▼ Limited Restrictions
- Exempt from Conservation Compliance Provisions

Disclaimer: Wetland identifiers do not represent the size, shape or specific determination of the area. Refer to your original determination (CPA-026 and attached maps) for exact wetland boundaries and determinations, or contact NRCS.

C=Corn-YEL-GR SB=Soybean-COM-GR  
SRW=Wheat-SRW-GR Milo=Sorgh-GRS-GR  
FG=grass or mixfg-fg CCC=covrc-cereals  
ALF=alfalfa-fg GZ=grass or mixfg-gz  
F=failed PP=prevent plant  
DC=double crop LS=left standing  
All fields are NI non-irrigated\*  
\*Unless notated on Map

**Program Year: 2025**

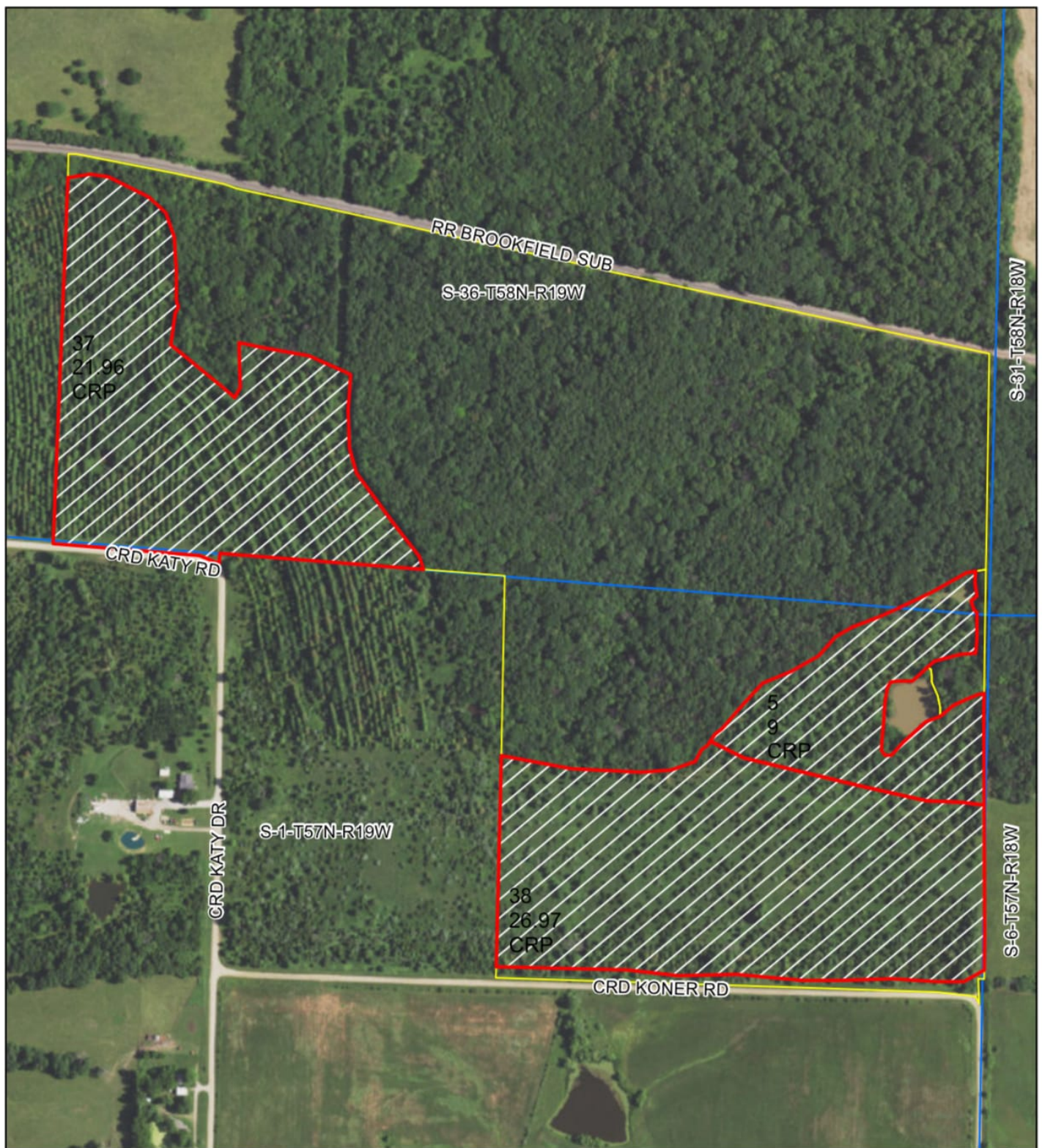
Created: 5/7/2025

Flown: 2022-6-28

- clu
- crp
- plss

**Farm 6446  
Tract 5373**





All Measurements are  
For FSA Programs Only

Linn Co. FSA

1:5,280



**Wetland Determination Identifiers**

- Restricted Use
- ▼ Limited Restrictions
- Exempt from Conservation Compliance Provisions

Disclaimer: Wetland identifiers do not represent the size, shape or specific determination of the area. Refer to your original determination (CPA-026 and attached maps) for exact wetland boundaries and determinations, or contact NRCS.

C=Corn-YEL-GR SB=Soybean-COM-GR  
SRW=Wheat-SRW-GR Milo=Sorgh-GRS-GR  
FG=grass or mixfg-fg CCC=covrc-cereals  
ALF=alfalfa-fg GZ=grass or mixfg-gz  
F=failed PP=prevent plant  
DC=double crop LS=left standing  
All fields are NI non-irrigated\*  
\*Unless notated on Map

**Program Year: 2025**

Created: 5/7/2025

Flown: 2022-6-28

- clu
- crp
- plss

**Farm 6446  
Tract 5373**