



# MISSOURI Land & Farm

www.missourilandandfarm.com • Office: 660-258-3185 • Fax: 660-258-2082

**146 Acres Tillable/Hunting!!**

**County Road 2405 & 2410 , Huntsville, MO 65230**

**Randolph County**

**\$759,200**



## CONTACT:



**JERRY CRUTCHFIELD**

Sales

660-670-1249

jerrydc@cvalley.net

Great Randolph Co. tillable tract and hunting tract.

- It features 98 acres of tillable farm ground currently cash rented.
- Gravel Road on 2 sides for great access.
- The farm is mostly comprised of Lagonda, Leonard, and Keswick Silt Loam
- Great Deer, Turkey and small game hunting if your a hunter. If not we can get you a very attractive hunting lease to go with you annual cash rent income.

Call, Text, or Email Jerry Crutchfield at 1-660-670-1249

Taxes: \$250

# Aerial Map



©2022 AgriData, Inc.

Map Center: 39° 19' 45.23, -92° 37' 55.38

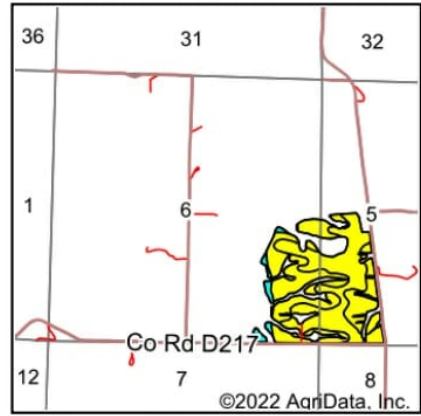
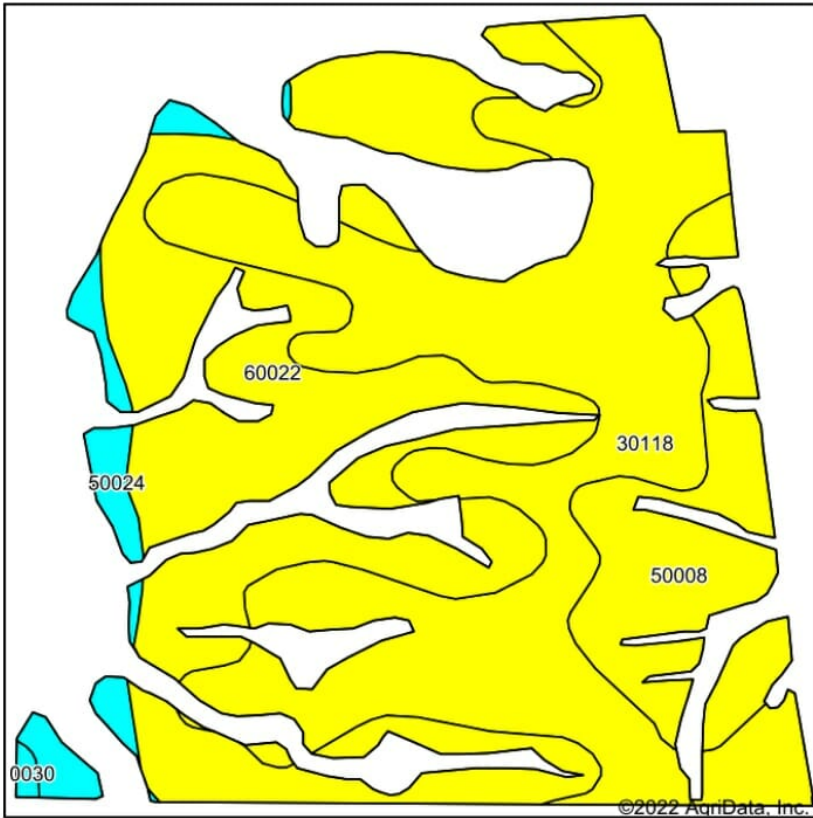


**6-52N-15W**  
**Randolph County**  
**Missouri**



1/3/2022

# Soils Map



State: **Missouri**  
 County: **Randolph**  
 Location: **6-52N-15W**  
 Township: **Silver Creek**  
 Acres: **96.91**  
 Date: **1/3/2022**



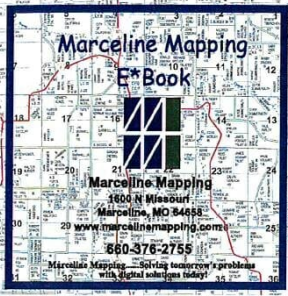
Soils data provided by USDA and NRCS.

Area Symbol: MO175, Soil Area Version: 22

Code	Soil Description	Acres	Percent of field	Non-Irr Class Legend	Non-Irr Class *c	Alfalfa hay Tons	Caucasian bluestem Tons	Common bermudagrass Tons	Orchardgrass red clover Tons	Tall fescue Tons	Warm season grasses Tons	*n NCCPI Soybeans	
30118	Lagonda silt loam, 5 to 9 percent slopes, eroded	42.69	44.1%		IIIc	5	8		7	8	7	8	49
60022	Leonard silt loam, 1 to 6 percent slopes, eroded	37.41	38.6%		IIIc								52
50008	Keswick silt loam, 5 to 9 percent slopes, eroded	12.55	13.0%		IIIc								49
50024	Gosport silt loam, 14 to 30 percent slopes, eroded	4.00	4.1%		VIc	4	7		4	6	5	7	17
50030	Keswick silt loam, 9 to 20 percent slopes, eroded	0.26	0.3%		VIc								37
<b>Weighted Average</b>						<b>3.13</b>	<b>2.4</b>	<b>3.8</b>	<b>3.2</b>	<b>3.8</b>	<b>3.3</b>	<b>3.8</b>	<b>*n 48.8</b>

\*n: The aggregation method is "Weighted Average using all components"  
 \*c: Using Capabilities Class Dominant Condition Aggregation Method

Soils data provided by USDA and NRCS.



Now Available!

# E\*BOOKs - E\*MAPs

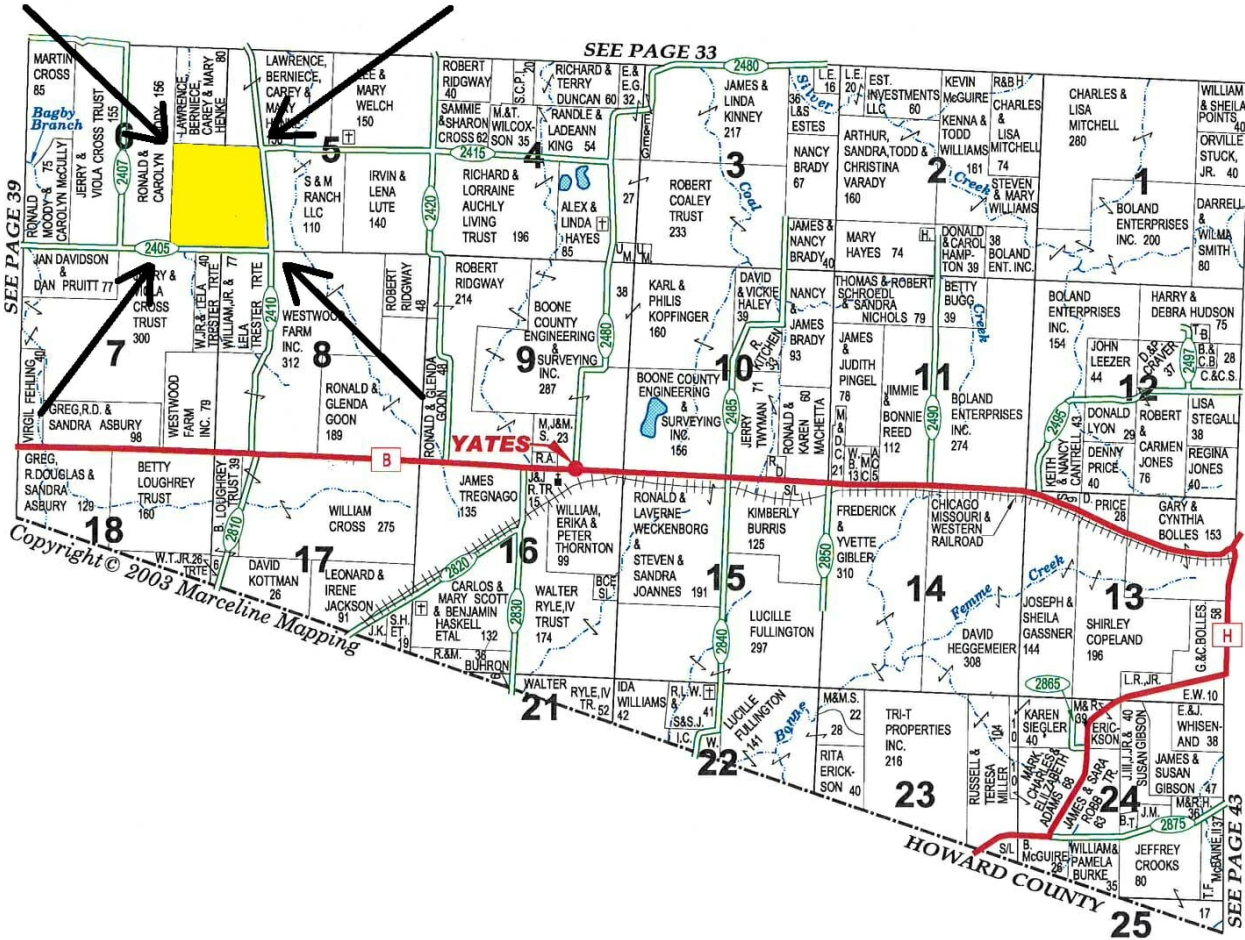
Ask about our new products and how you can obtain information about your county with just one click of the mouse!

Call us and inquire about our **E\*Books and E\*Maps** today.

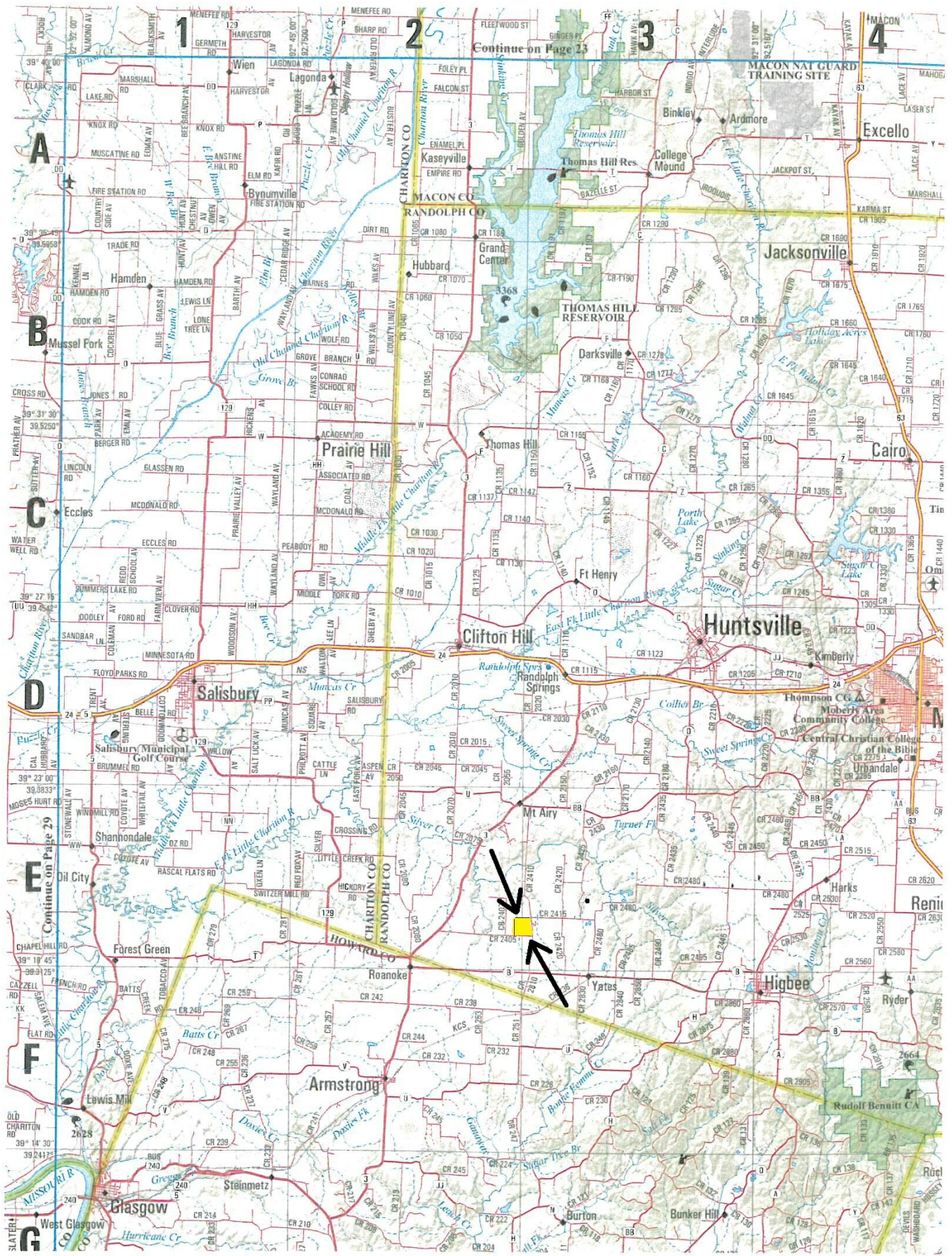
An **E\*BOOK and E\*Map** offer you a digital solution for any computer.

Marceline Mapping... Solving tomorrow's problems with digital solutions today!

## TOWNSHIP 52N • RANGE 15W



Copyright © 2003 Marceline Mapping



Continue on Page 23

MACON NAT GUARD TRAINING SITE

CHARTON CO

MACON CO

RANDOLPH CO

Jacksonville

THOMAS HILL RESERVOIR

Huntsville

Salisbury

Clifton Hill

Mt Airy

Thompson CG A

Moberly Area Community College

Central Christian College of the Bible

Urbandale

Forest Green

Roanoke

Yates

Higbee

Renix

Armstrong

Rudolf Bennett CA

Glasgow

Steinmetz

Bunker Hill

Ruel