



MISSOURI Land & Farm

www.missourilandandfarm.com • Office: 660-258-3185 • Fax: 660-258-2082

190.8 Acres of Saline Co. Hunting with Income

145th Road

Saline County

\$448,380



CONTACT:



JEFFREY QUINN

Broker

660-734-3925

jquinn@missourilandandfarm.com

**** 88 acres is Under Contract with 103 still Available and listed separately****

Serious Whitetail Hunters know that when you find a large tract of big cover you will find bucks. When you find a place like this in MO you will find big ones.

If your looking for a whitetail heaven this place checks all the boxes:

Perfectly located on a Dead End Road!!!

Mature Timber & Dense Underbrush!!!

Tillable, CRP and Food plot acreages!!!

Salt Pond Creek Travel Corridor!!!

You will be hard pressed to find a better mix of desirable traits for Whitetails and Turkey.

The farm is bordered by WRP and parts of it lay favorably for waterfowl development with flooded marsh, flooded woods, and buck brush potential.

21.21 Acres have recently been signed up for CRP paying \$141/Acre of \$2990.61 in yearly income.

Farm lays less than 1 hour from KC

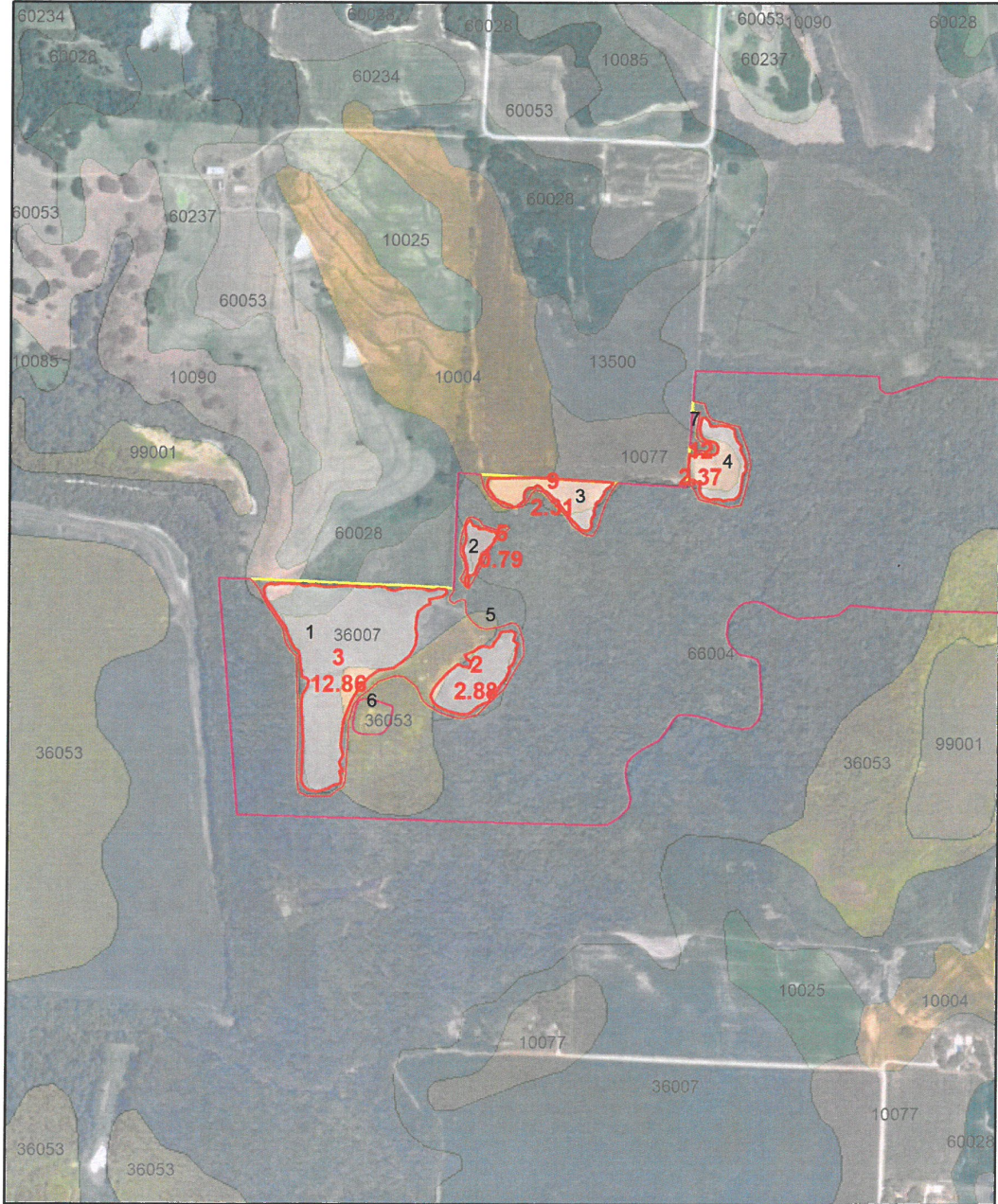
Owner will split into a 83 acre and 108 acre tract if desired.

This is the perfect recreational farm with income. Call Jeff Quinn today 1-660-734-3925

Taxes: \$133.99

Scenario Map

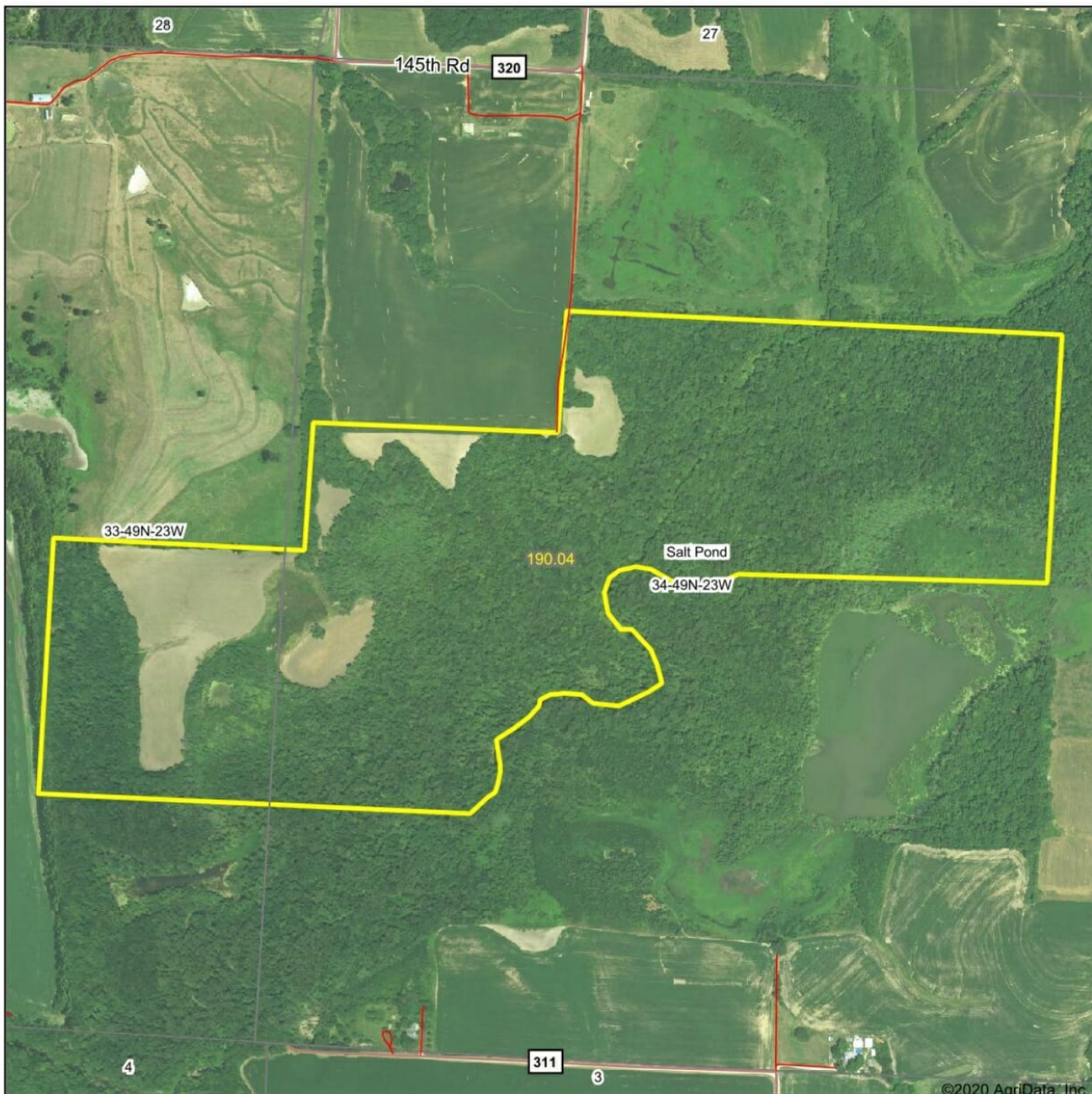
Continuous Signup 53
 Scenario Name: MONTGOMERY (1)
 Tract: 330



#: Scenario ID
#.00: Scenario Acres
#: CLU Number

- Scenario_Polygon
- Cropland
- Not Cropland

Aerial Map



Map Center: 38° 59' 31.63, -93° 25' 59.25



34-49N-23W
Saline County
Missouri

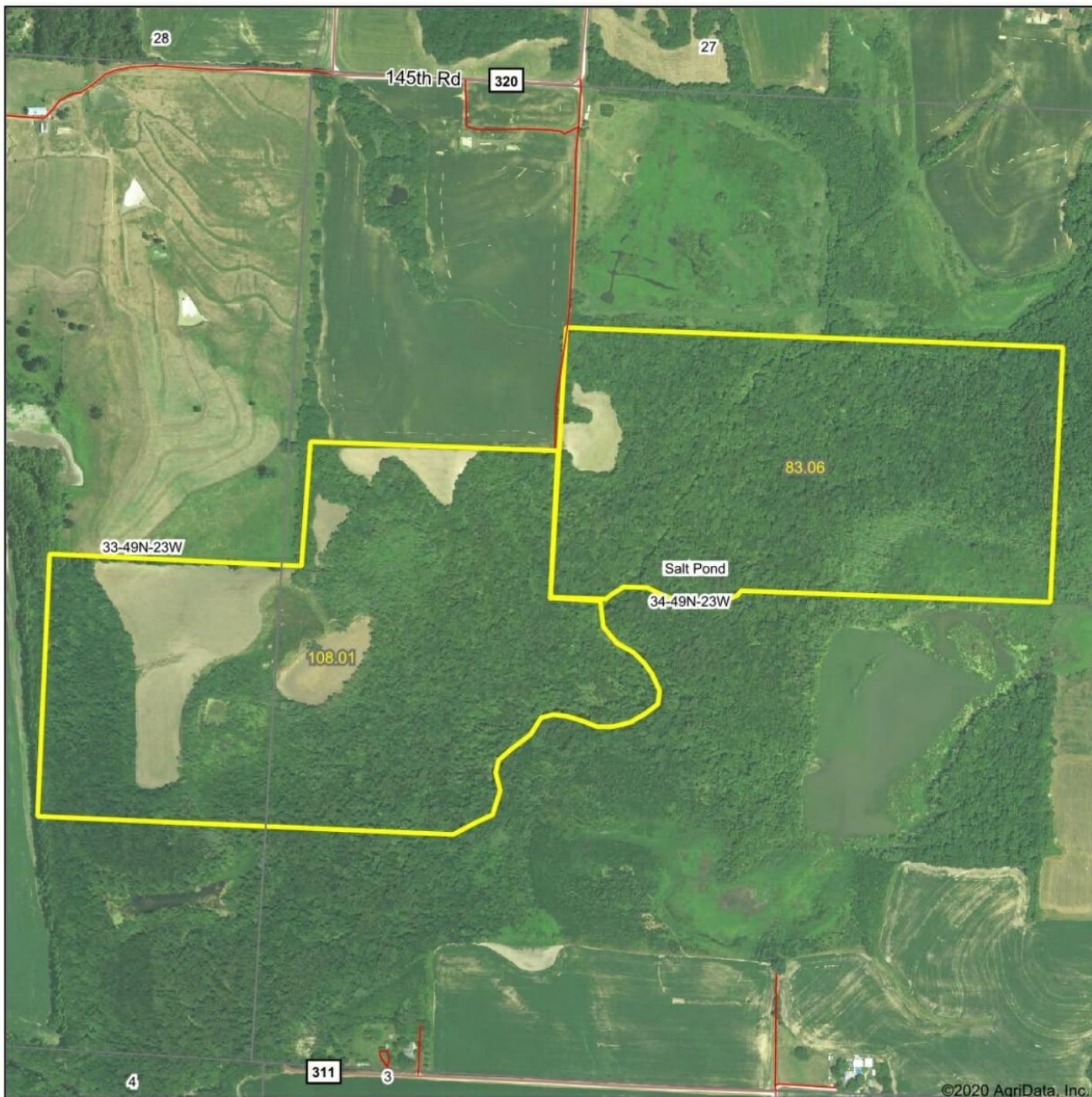


7/16/2020

Maps Provided By:

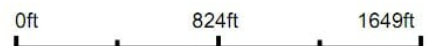
CUSTOMIZED ONLINE MAPPING
© AgriData, Inc. 2020 www.AgrIDataInc.com

Aerial Map



©2020 AgriData, Inc.

Map Center: 38° 59' 32.47, -93° 25' 59.14



34-49N-23W
Saline County
Missouri



7/25/2020

"We'll Keep You Warm"
 Farm • Home • Business
 "Our Prices Before Your
 Next Fill Up"

BRYAN'S PROPANE

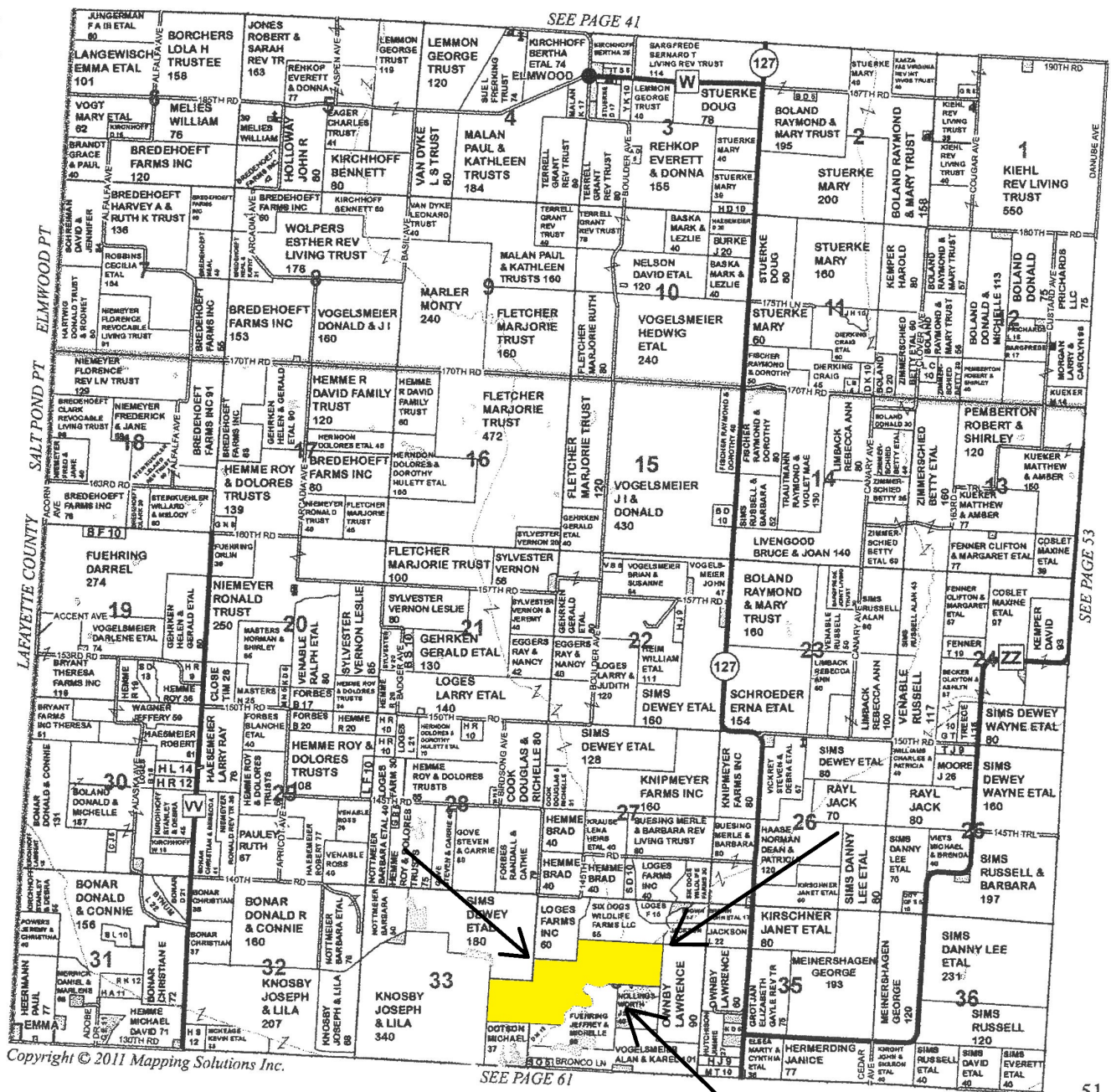
24 Hour Service
 Mon - Fri • 8 - 5
 Family Owned
 &
 Operated

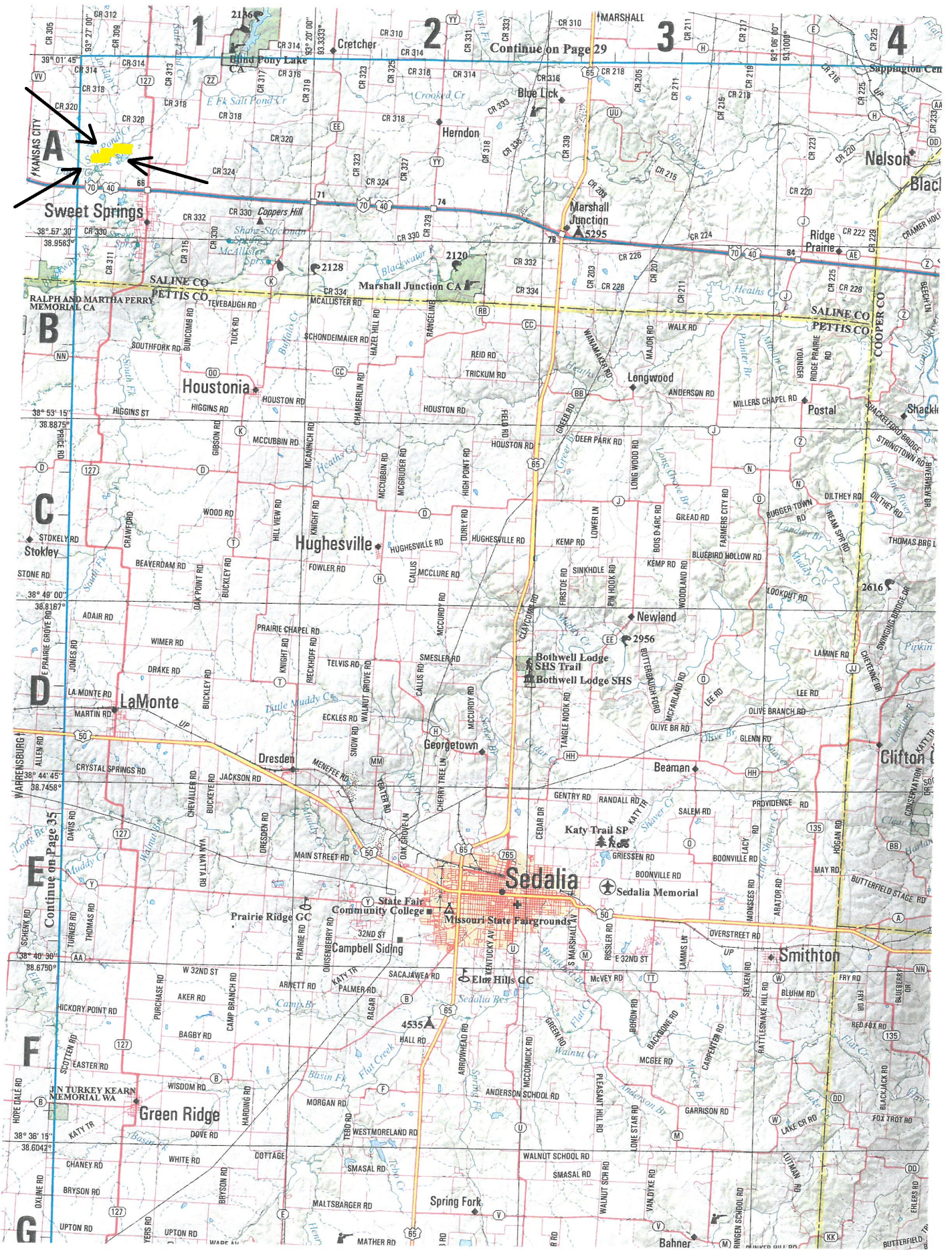


660-
886-5566

After Hours: 660-631-2371 • Cell Phone: 660-631-2371 • 612 N. Miami • Marshall

TOWNSHIP 49N • RANGE 23W





A

B

C

D

E

F

G

1

2

3

4

Continue on Page 29

Sweet Springs

Houstonia

Hughesville

LaMonte

Dresden

Georgetown

Sedalia

Green Ridge

Spring Fork

Smithton

Nelson

Blacksburg

Marshall Junction

Ridge Prairie

Longwood

Postal

Shackelford

Newland

Bothwell Lodge SHS Trail

Bothwell Lodge SHS

Beaman

Katy Trail SP

Sedalia Memorial

Clifton

Prairie Ridge

Community College

Missouri State Fairgrounds

Campbell Siding

Elm Hills GC

J N Turkey Kearn Memorial WA

Anderson School Rd

Pleasanton

Garrison Rd

Mather Rd

Bahner

Butterfield