



MISSOURI Land & Farm

www.missourilandandfarm.com • Office: 660-258-3185 • Fax: 660-258-2082

**193 Acres Chariton Co. (Deer, Turkey,
Geese, Small Game)**

Hickory Grove Road / Powell Ave

Chariton County

\$3,000



CONTACT:



JEFFREY QUINN

Broker

660-734-3925

jquinn@missourilandandfarm.com

Great spot for some of the famous Giant Whitetails Chariton County has been know to hold!!

With great travel corridors this farm has produced several nice deer in the past and will continue.

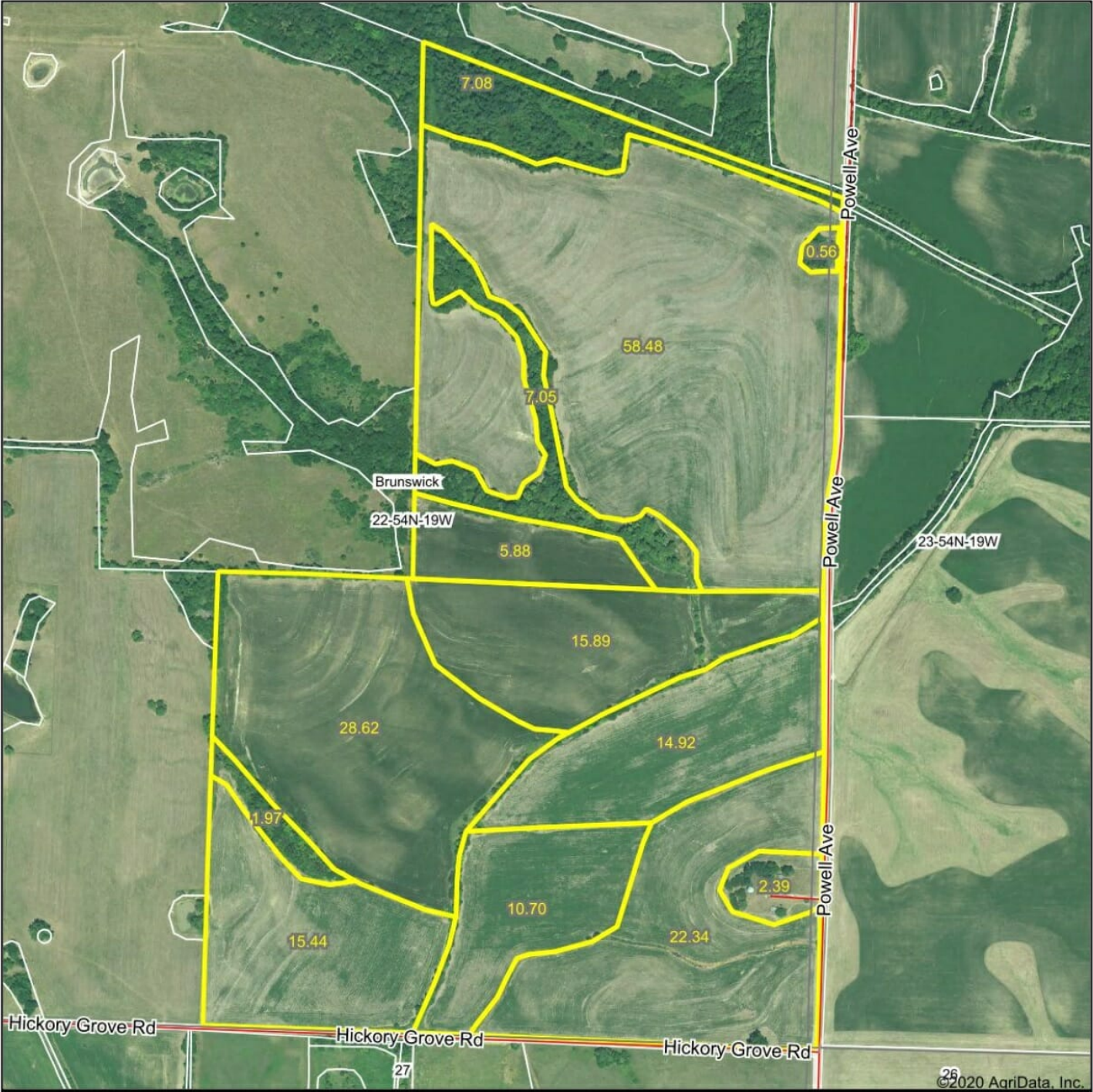
This row crop farm surrounded by several pasture farms is sure to be the desired food source in the area.

Great spot for a camper.

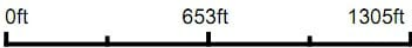
Currently looking for a lease from today thru Muzzle loader season Jan 5, 2021.

Also looking for a \$3000 Lease for 2021 Hunting Season.

Aerial Map



Map Center: 39° 28' 19.17, -93° 1' 18.82



22-54N-19W
Chariton County
Missouri

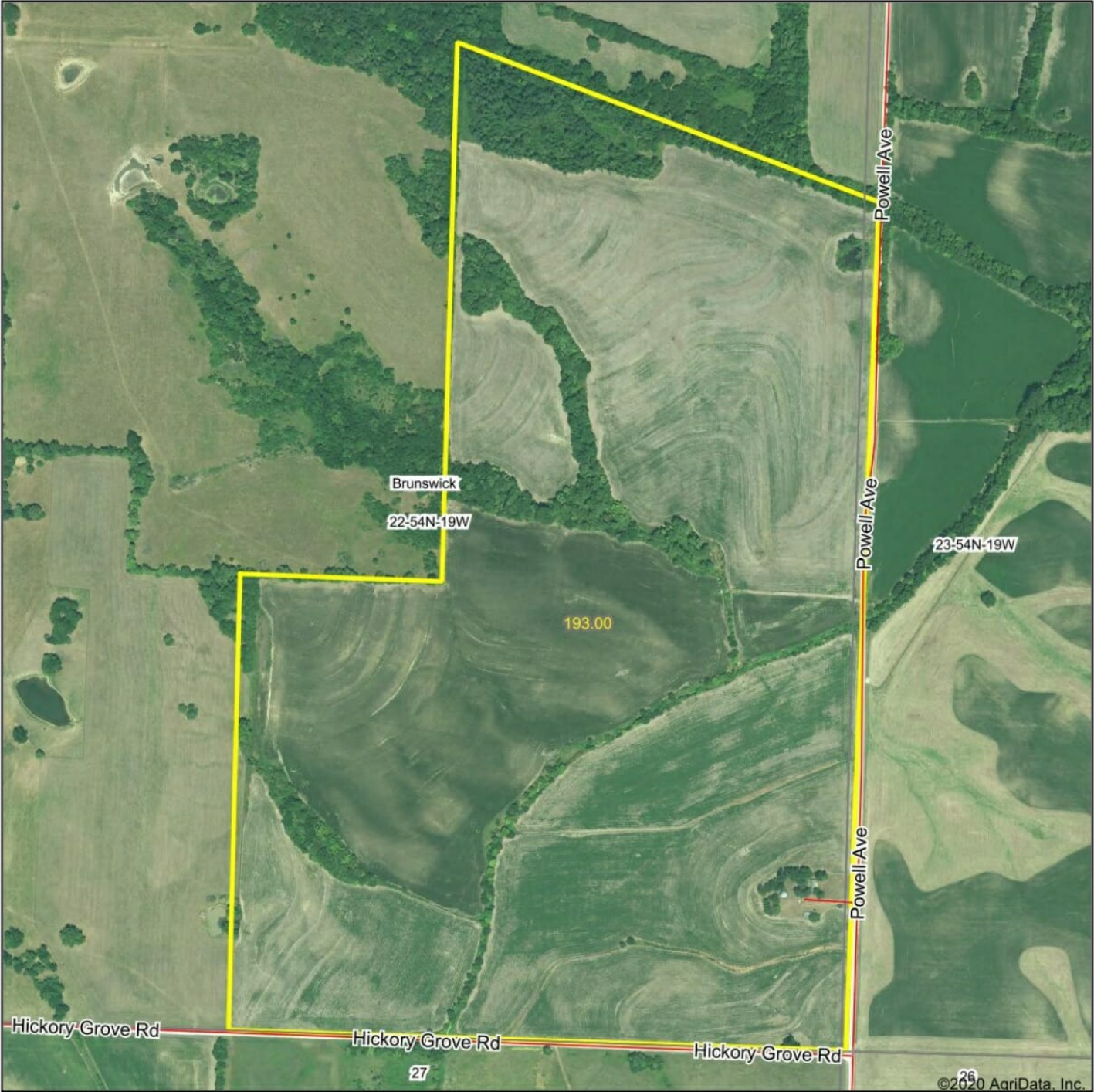


9/3/2020

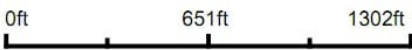
Maps Provided By:
 **surety**
CUSTOMIZED ONLINE MAPPING
© AgriData, Inc. 2020 www.AgrIDataInc.com

Field borders provided by Farm Service Agency as of 5/21/2008.

Aerial Map



Map Center: 39° 28' 19.23, -93° 1' 20.55

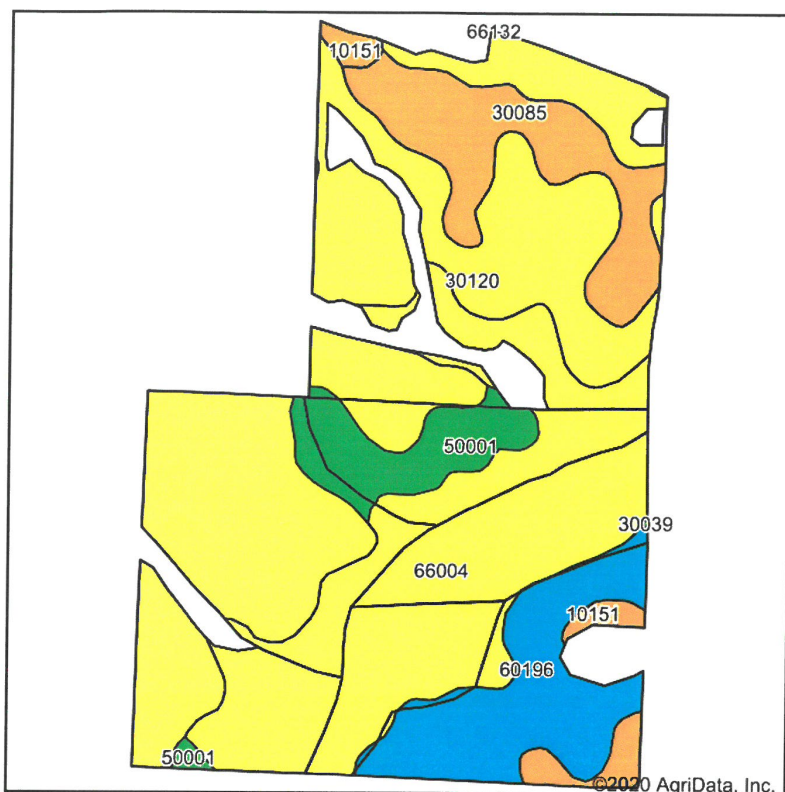


22-54N-19W
Chariton County
Missouri

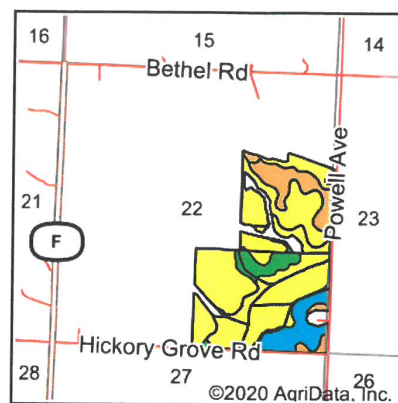


9/21/2020

Soils Map



Soils data provided by USDA and NRCS.



State: **Missouri**
 County: **Chariton**
 Location: **22-54N-19W**
 Township: **Brunswick**
 Acres: **172.27**
 Date: **9/3/2020**

Maps Provided By

 CUSTOMIZED ONLINE MAPPING
 © AgriData, Inc. 2020 www.AgriDataInc.com



Area Symbol: MO041, Soil Area Version: 23

Code	Soil Description	Acres	Percent of field	Non-Irr Class Legend	Non-Irr Class *c	Alfalfa hay	Caucasian bluestem	Common bermudagrass	Cor n	Grain sorghum	Orchardgrass red clover	Soybeans	Tall fescue	Warm season grasses	Winter wheat	*1 S
30120	Lagonda silty clay loam, 5 to 9 percent slopes, eroded	70.94	41.2%		IIIe	5	8	7				8	7	8		
66004	Dockery silt loam, 0 to 2 percent slopes, frequently flooded	51.30	29.8%		IIIw			8	5	4	9	1	8	10	2	
60196	Newcomer loam, 9 to 14 percent slopes, eroded	18.42	10.7%		VIe	4	7	4			6		5	7		
30085	Grundy silt loam, 2 to 5 percent slopes	17.06	9.9%		Ile											
50001	Armstrong loam, 5 to 9 percent slopes, eroded	10.04	5.8%		IVe											
10151	Wakenda silt loam, 2 to 5 percent slopes	4.51	2.6%		Ile	7	8	7			7		7	8		
Weighted Average						2.7	4.3	5.9	1.5	1.2	6.8	0.3	6	7.2	0.6	

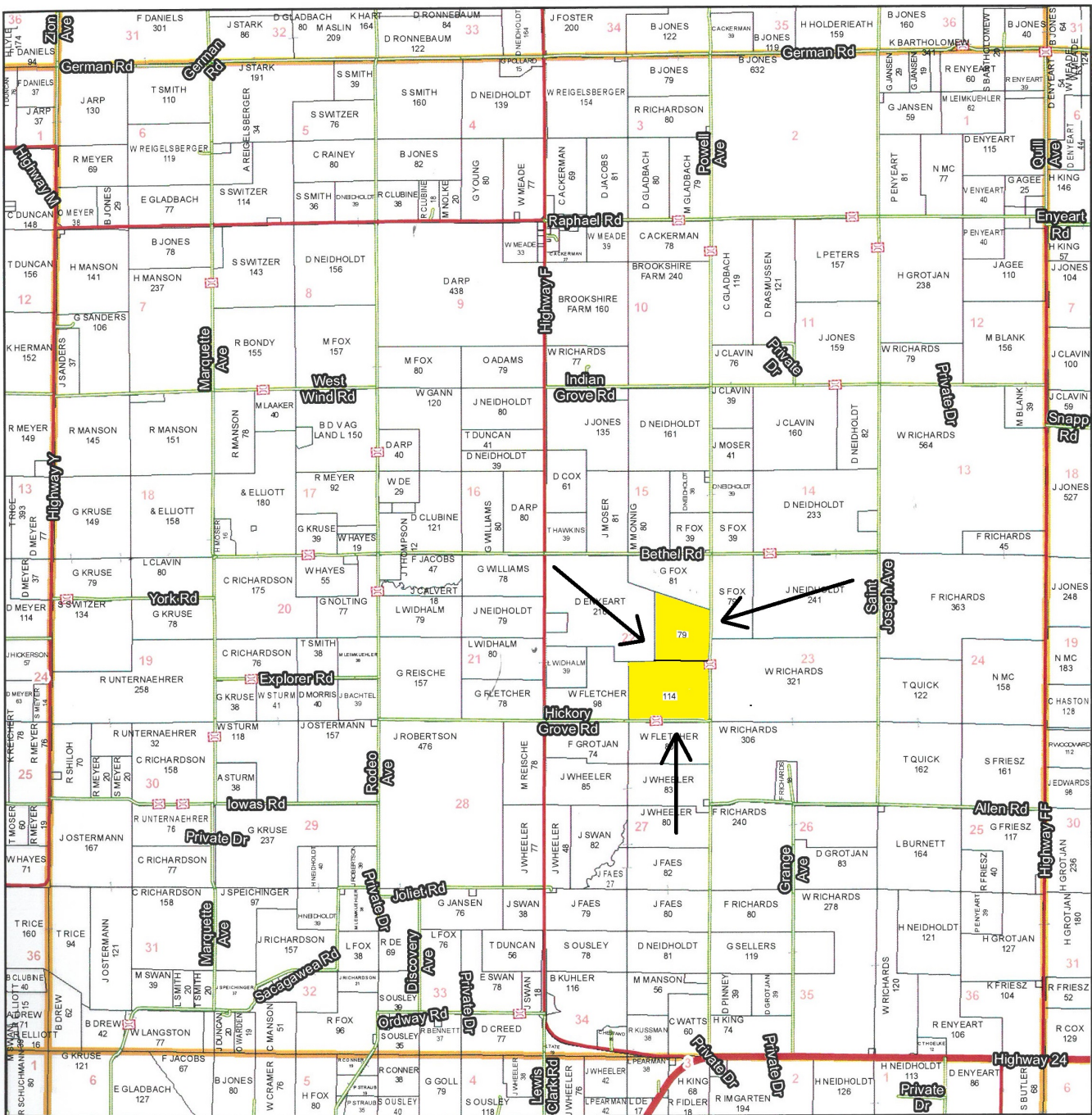
*n: The aggregation method is "Weighted Average using all components"

*c: Using Capabilities Class Dominant Condition Aggregation Method

Soils data provided by USDA and NRCS.

T54N - R19W

See Page 27



See Page 51

Chariton County Commission
 Tony McCallum - Presiding Commissioner
 Danny Price - Western District Commissioner
 Steve Atkinson - Eastern District Commissioner

Data Courtesy Chariton County Geographic Information System
 Darrin Gladbach - Assessor

This data was primarily developed for tax purposes and is not considered survey accurate.

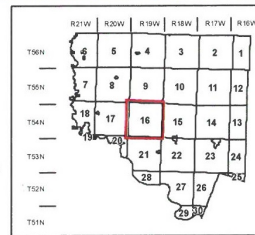
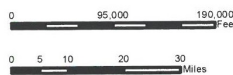
Most parcels > 10 ac labeled

GIS & Map Development By:



www.midlandgis.com

© Copyright Chanton County, MO



Legend

- City Limits
- Township-Range
- Sections
- Land Grant
- Political Township
- Land Ownership
- Subdivisions
- Conservation & US
- US Highways
- ST Highways
- CO Highways
- Streets
- Rail Roads
- Streams
- Land Hooks
- Bridges

