



# MISSOURI Land & Farm

www.missourilandandfarm.com • Office: 660-258-3185 • Fax: 660-258-2082

**218 Acres – Premium Hunting  
Turnkey/Tillable!!**

**Hwy 129, New Cambria, MO 63558**

**Macon County**

**\$1,150,000**



**CONTACT:**



**JEFFREY QUINN**

Broker

**660-734-3925**

jquinn@missourilandandfarm.com



## 218 Acres – Hardcore Whitetail & Turkey Hunter's Dream! Turnkey Hunting & Tillable Income

If you're a serious whitetail or turkey hunter searching for that rare, premium tract that's ready to hunt on Day One—look no further.

This **218-acre** secluded hunting farm is built for the dedicated outdoorsman. Tucked back off **Highway 129**, access is secured by a **30-foot deeded easement** leading to a truly private, turnkey hunting property—**completely removed from roadside pressure**.

One of this farm's biggest advantages is its **lack of road frontage on the boundaries**. With **no roads running along the sides**, this farm **lays out and hunts significantly larger than its size**. You get unmatched **seclusion, security, and peace of mind**, knowing your deer aren't being bumped by passing traffic or poached by road hunters. It's a true sanctuary where **mature bucks can grow old and undisturbed**.

Once you're on the land, you'll instantly see the setup is no accident. This farm has been **purpose-built for serious hunters**:

- **Established food plots**
- **Strategically placed blinds & shooting lanes**
- **Well-maintained internal trail system**
- **Natural springs and a year-round creek**
- **Rolling hardwood ridges and thick bedding cover**

This property is designed to **hold mature bucks and flocks of gobblers year-round**.

Of the total acreage, **83.5 acres are open**, currently used for row crops, food plots, and native grasses. **Roughly 40 acres are planted in soybeans** under a **cash rent agreement at \$160/acre**, providing **\$6,400/year in income**—plus a steady source of high-protein forage for summer antler growth.

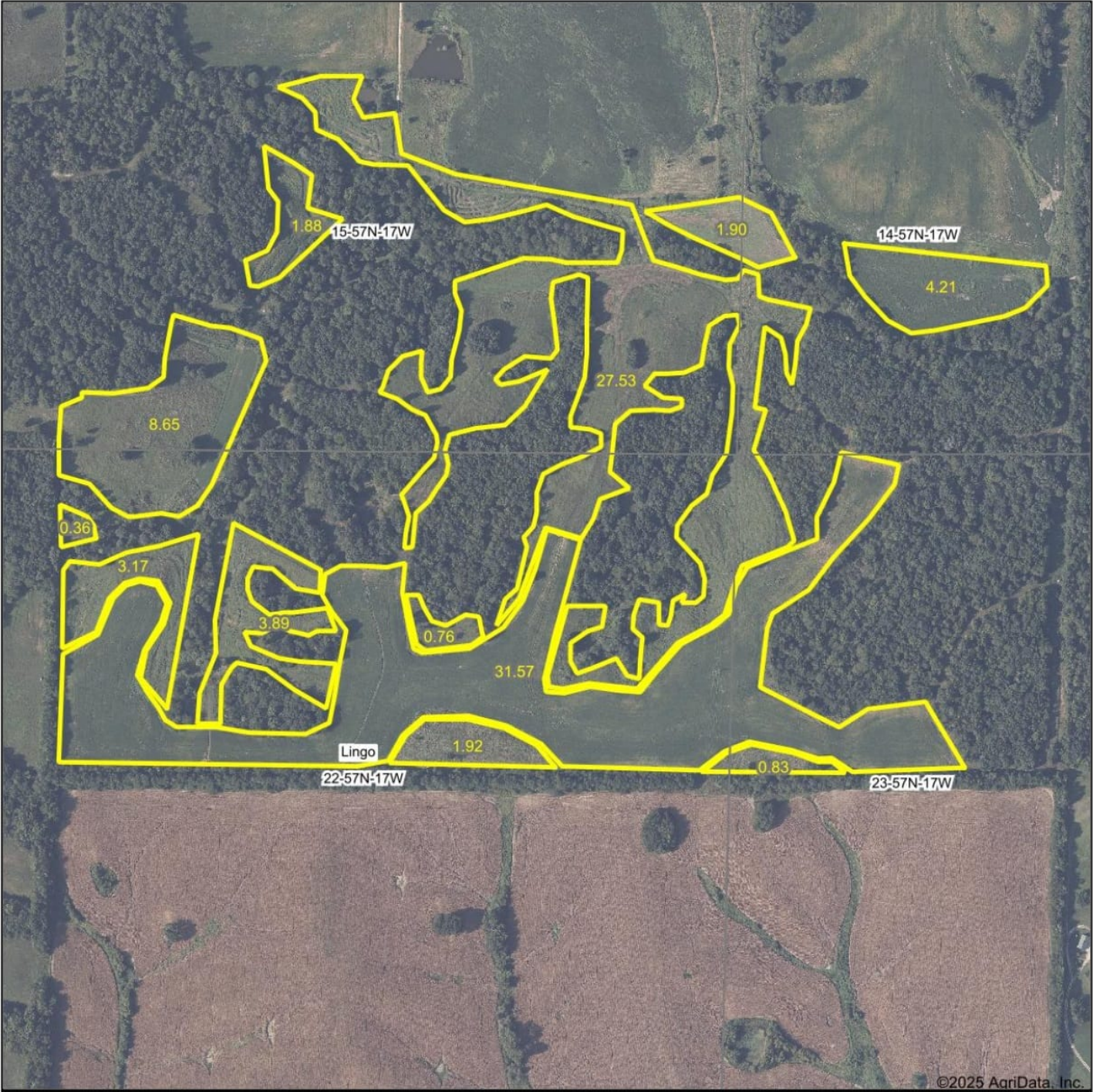
The rest of the property features **timbered ridges, draws, and creek bottom**—ideal whitetail and turkey habitat with diverse terrain to funnel and pattern game. With **natural pinch points and layered cover**, this farm is already set up to produce consistent success in both archery and firearm seasons.

Whether you're after **record-class bucks, fired-up spring longbeards**, or a long-term land investment that pays, this farm **checks every box**.

**Call Jeff Quinn at 660-734-3925** for a private showing and more details.



Aerial Map



©2025 AgriData, Inc.

Boundary Center: 39° 44' 36.85, -92° 47' 4.85



Maps Provided By:  
**surety**  
CUSTOMIZED ONLINE MAPPING  
© AgriData, Inc. 2023    www.AgriDataInc.com

**15-57N-17W**  
**Macon County**  
**Missouri**

7/8/2025

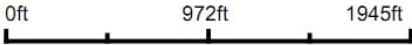


Aerial Map



©2025 AgriData, Inc.

Map Center: 39° 44' 37.03, -92° 47' 20.73



Maps Provided By:  
 **surety**  
CUSTOMIZED ONLINE MAPPING  
© AgriData, Inc. 2023    www.AgriDataInc.com

**15-57N-17W**  
**Macon County**  
**Missouri**

7/8/2025









©2025 AgriData

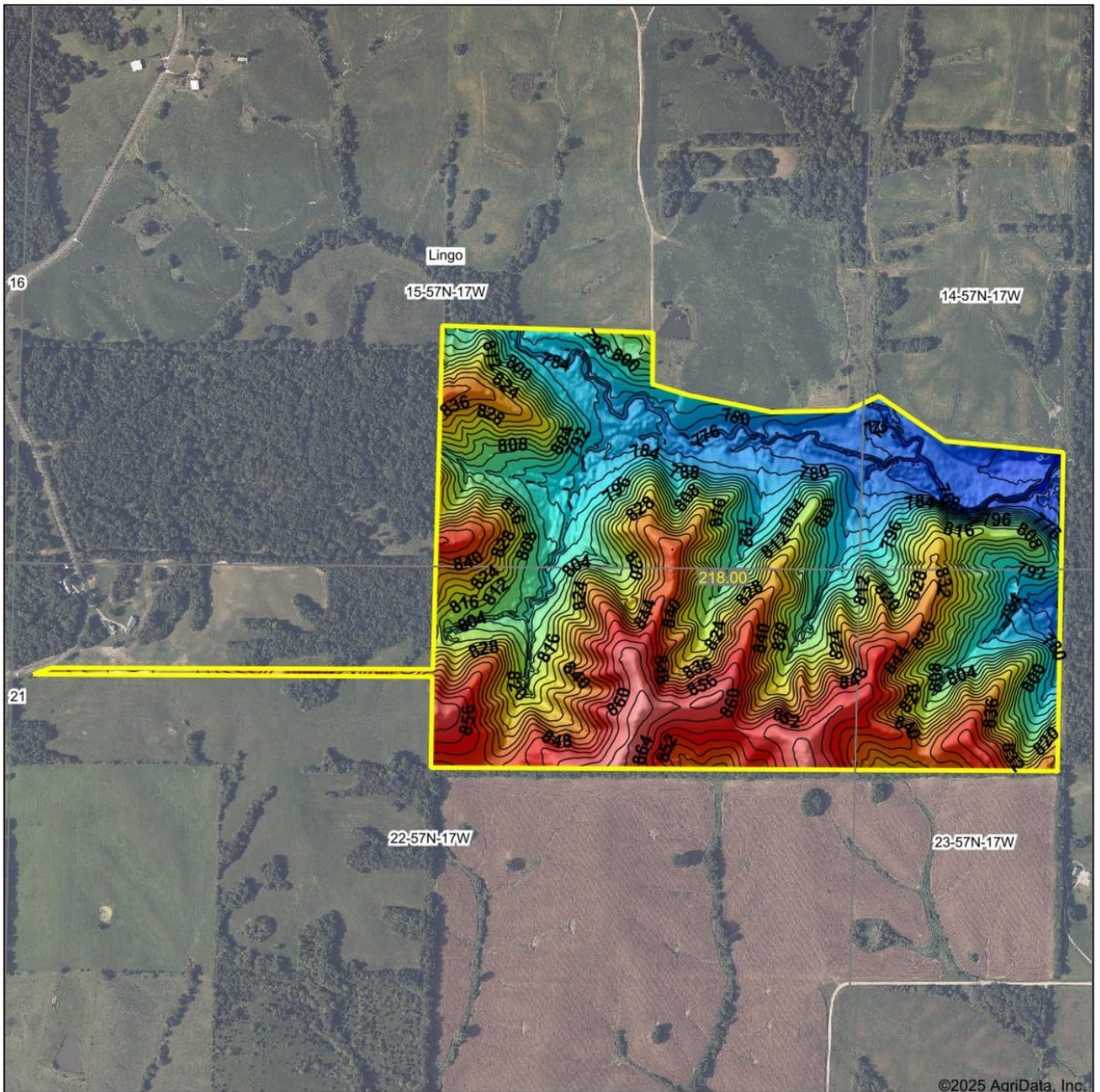
Soils data provided by USDA and NRCS.

Area Symbol: MO121, Soil Area Version: 28

Code	Soil Description	Acres	Percent of field	Non-Irr Class Legend	Non-Irr Class *c	Alfalfa hay Tons	Caucasian bluestem Tons
60203	Purdin loam, 14 to 20 percent slopes, eroded	24.74	28.7%		VIe	5	7
60062	Bevier silty clay loam, 3 to 8 percent slopes, moderately eroded	18.28	21.1%		IIIe		
60201	Purdin clay loam, 20 to 35 percent slopes, eroded	15.08	17.4%		IVe	5	8
66134	Tice silty clay loam, 1 to 3 percent slopes, frequently flooded	10.72	12.4%		IIIw		
30039	Armstrong loam, 9 to 14 percent slopes, eroded	5.73	6.6%		IVe		
50001	Armstrong loam, 5 to 9 percent slopes, eroded	5.33	6.1%		IVe		
36072	Blackoar silt loam, 1 to 4 percent slopes, frequently flooded	3.85	4.4%		IIIw		
50011	Winnegan loam, 20 to 35 percent slopes	2.26	2.6%		VIe	5	7
36004	Blackoar silt loam, 0 to 2 percent slopes, frequently flooded	0.39	0.4%		IIIw		



# Topography Hillshade



©2025 AgriData, Inc.



Source: USGS 3 meter dem  
Interval(ft): 4  
Min: 760.6  
Max: 886.1  
Range: 125.5  
Average: 816.1  
Standard Deviation: 27.79 ft



**15-57N-17W**  
**Macon County**  
**Missouri**

Boundary Center: 39° 44' 37.03, -92° 47' 20.73

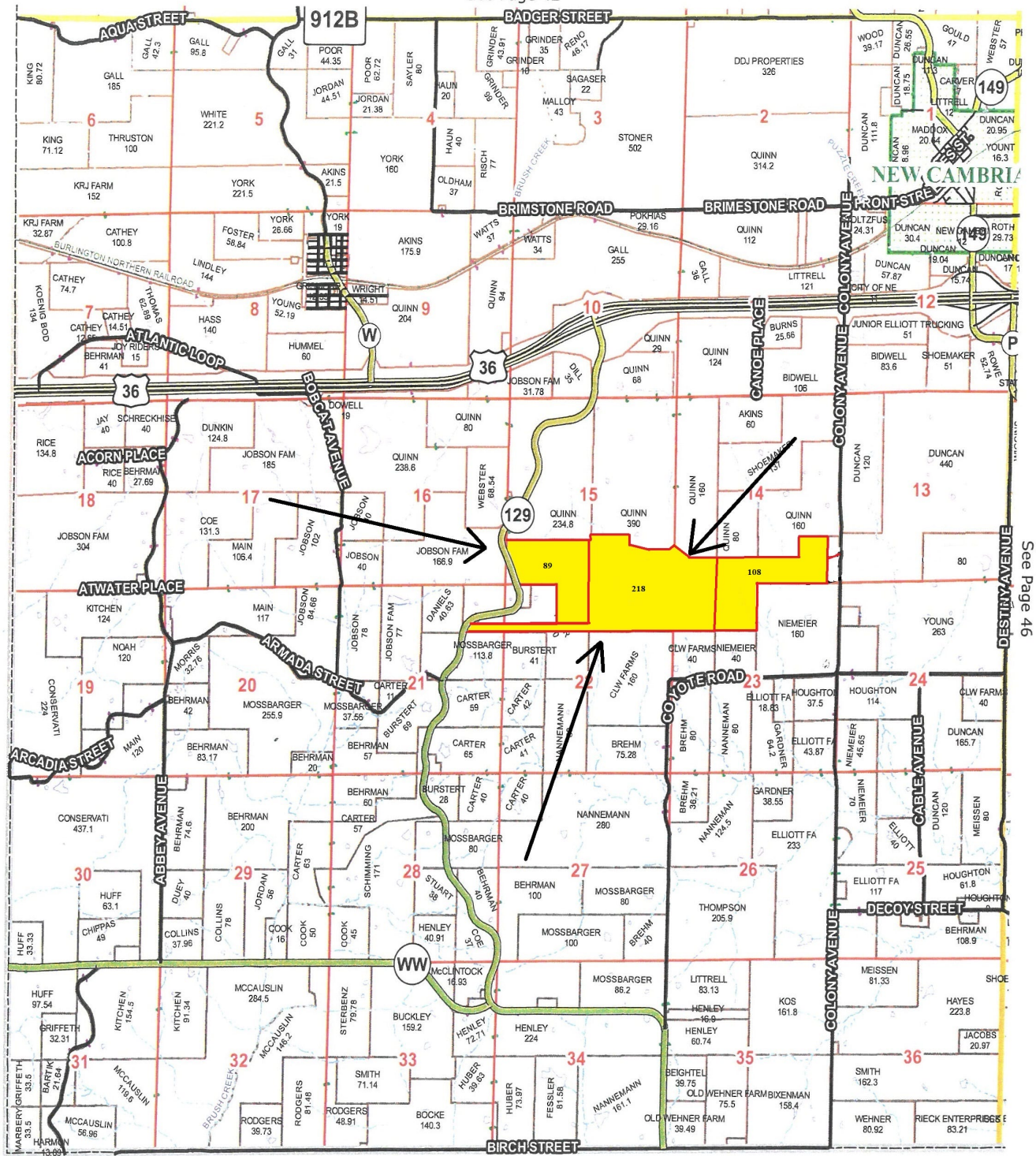
Maps Provided By:  
**surety**  
CUSTOMIZED ONLINE MAPPING  
© AgriData, Inc. 2023 www.AgriDataInc.com





# Lingo Township 16 T-57-N R-17-W

See Page 42



Chariton Co.

See Page 46



