



MISSOURI Land & Farm

www.missourilandandfarm.com • Office: 660-258-3185 • Fax: 660-258-2082

231 Acre Prime Missouri River Bottom Farm (4%)!!

Co Road 394, Amazonia, MO

Andrew County

\$1,250,000



CONTACT:



JEFFREY QUINN

Broker

660-734-3925

jquinn@missourilandandfarm.com

This Missouri River Bottom farm has some of the highly coveted class 1 soil that we hardly ever see!!

70 Acres of class 1 Haynie Soils

150 Acres of Class 2 Leta Silty Soils

Farm is Cash rented for \$225 per acre for 2020-2024.

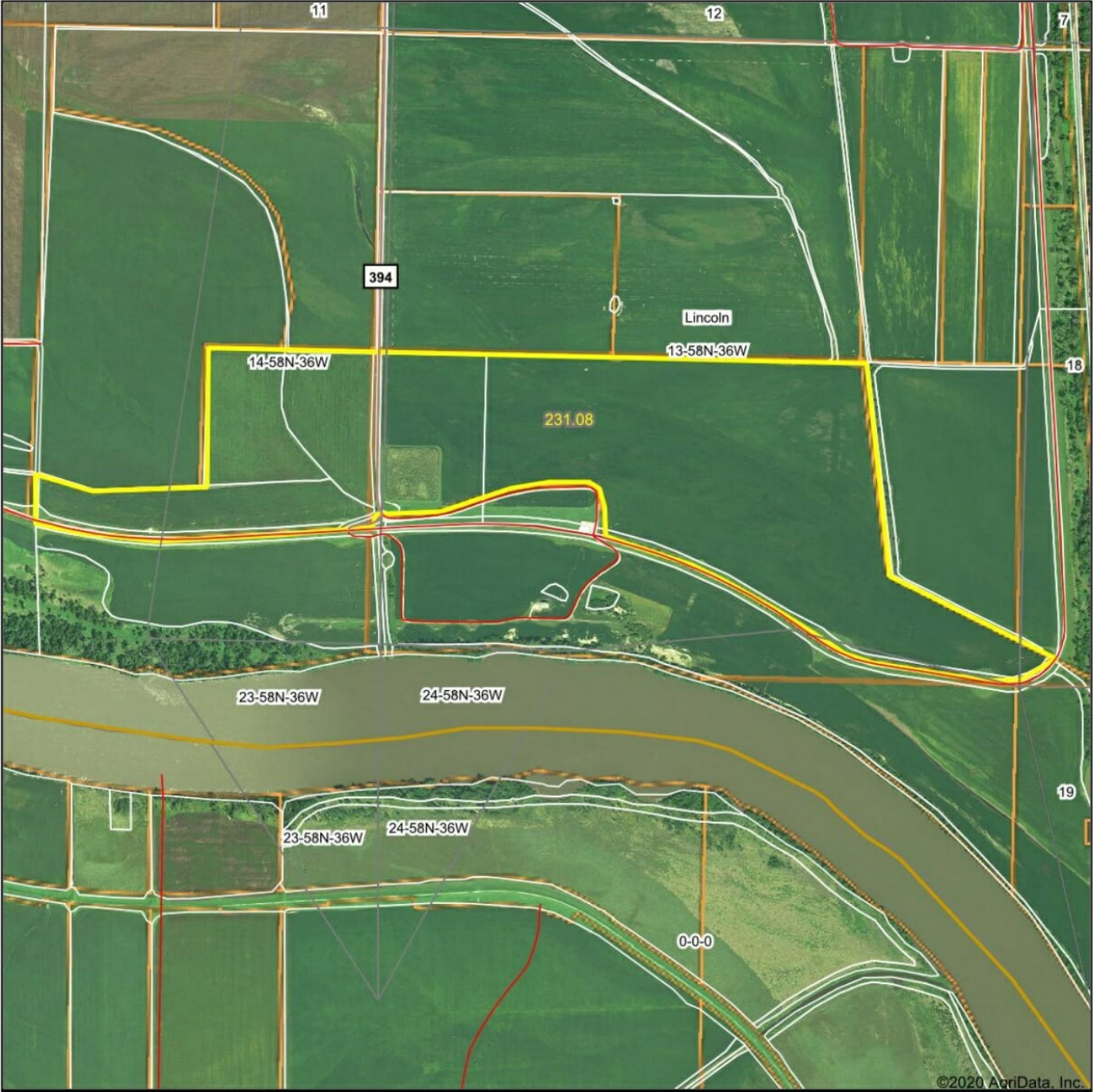
Annual income of \$49,500 paid 1/2 April 1st and 1/2 Dec 1st.

A small hunting lease could be added.

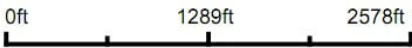
Call Jeff Quinn for more information 1-660-734-3925

FA

Aerial Map



Map Center: 39° 50' 18.92, -94° 53' 42.15



13-58N-36W
Andrew County
Missouri



8/18/2020

Maps Provided By:

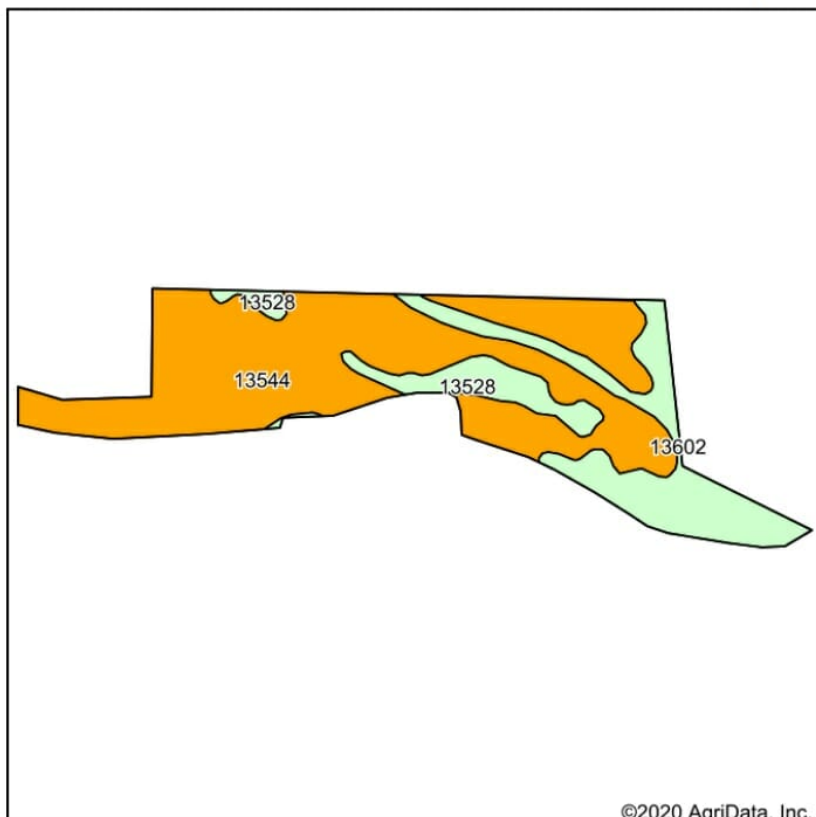


surety
CUSTOMIZED ONLINE MAPPING

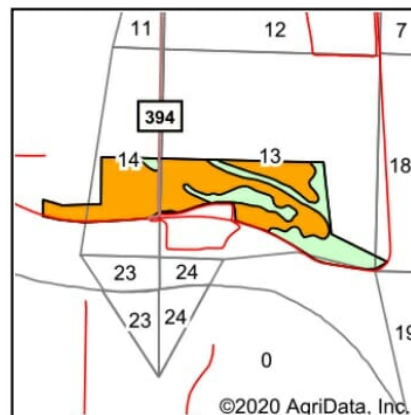
© AgriData, Inc. 2020 www.AgriDataInc.com

Field borders provided by Farm Service Agency as of 5/21/2008.

Soils Map



Soils data provided by USDA and NRCS.



State: **Missouri**
 County: **Andrew**
 Location: **13-58N-36W**
 Township: **Lincoln**
 Acres: **231.08**
 Date: **8/18/2020**

Maps Provided By:

 CUSTOMIZED ONLINE MAPPING
 © AgriData, Inc. 2020 www.AgriDataInc.com



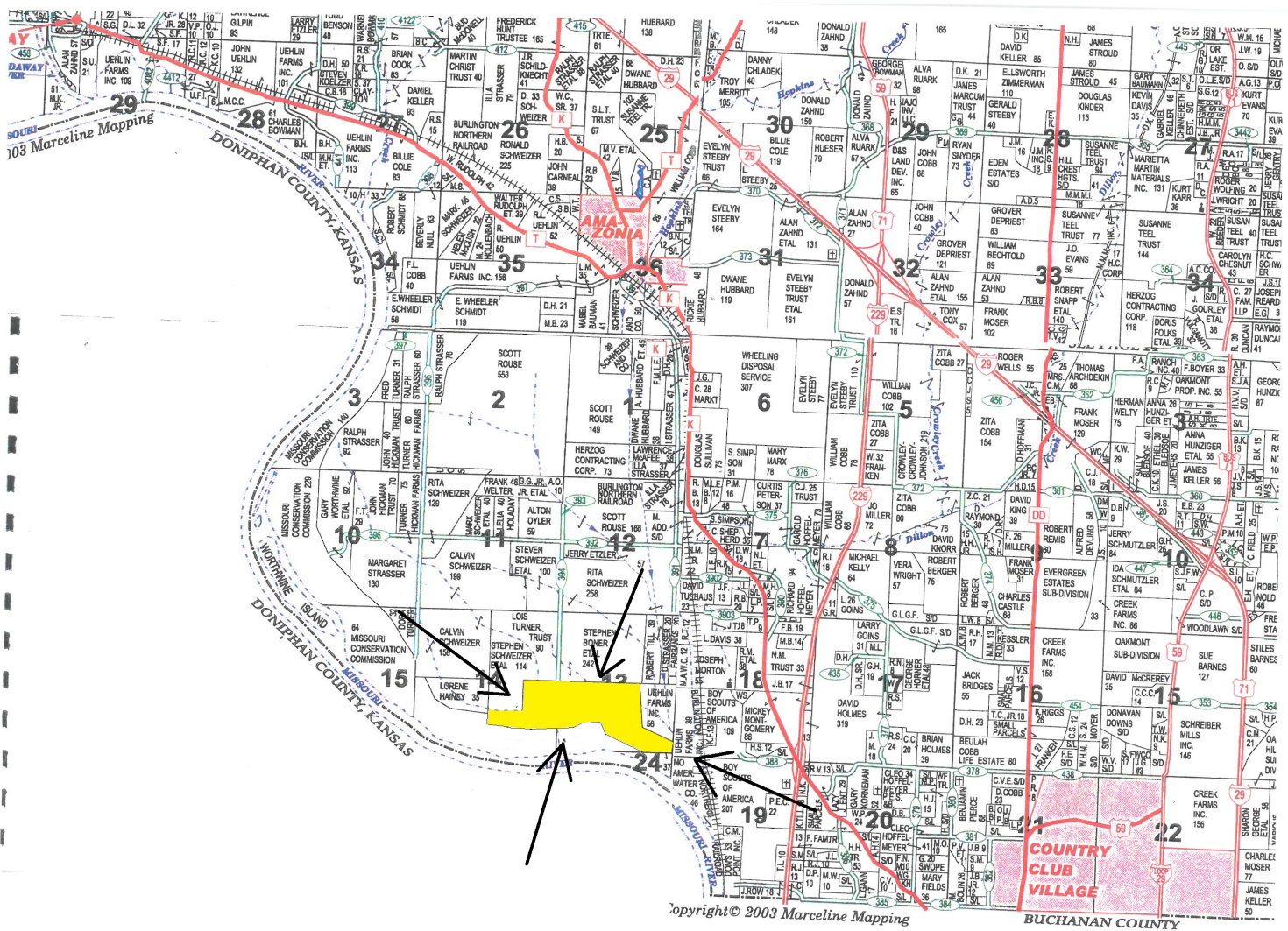
Area Symbol: MO003, Soil Area Version: 22

Code	Soil Description	Acres	Percent of field	Non-Irr Class Legend	Non-Irr Class *c	Common bermudagrass	Orchardgrass red clover	Tall fescue	Warm season grasses	*n NCCPI Soybeans
13544	Leta silty clay, 0 to 2 percent slopes, rarely flooded	160.90	69.6%		Ilw	8	7	8	9	64
13602	Haynie silt loam, 0 to 2 percent slopes, rarely flooded	49.54	21.4%		lw	7	8	8	10	68
13528	Haynie very fine sandy loam, 0 to 2 percent slopes, rarely flooded	20.64	8.9%		ls	7	9	8	10	69
Weighted Average						7.7	7.4	8	9.3	*n 65.3

*n: The aggregation method is "Weighted Average using all components"

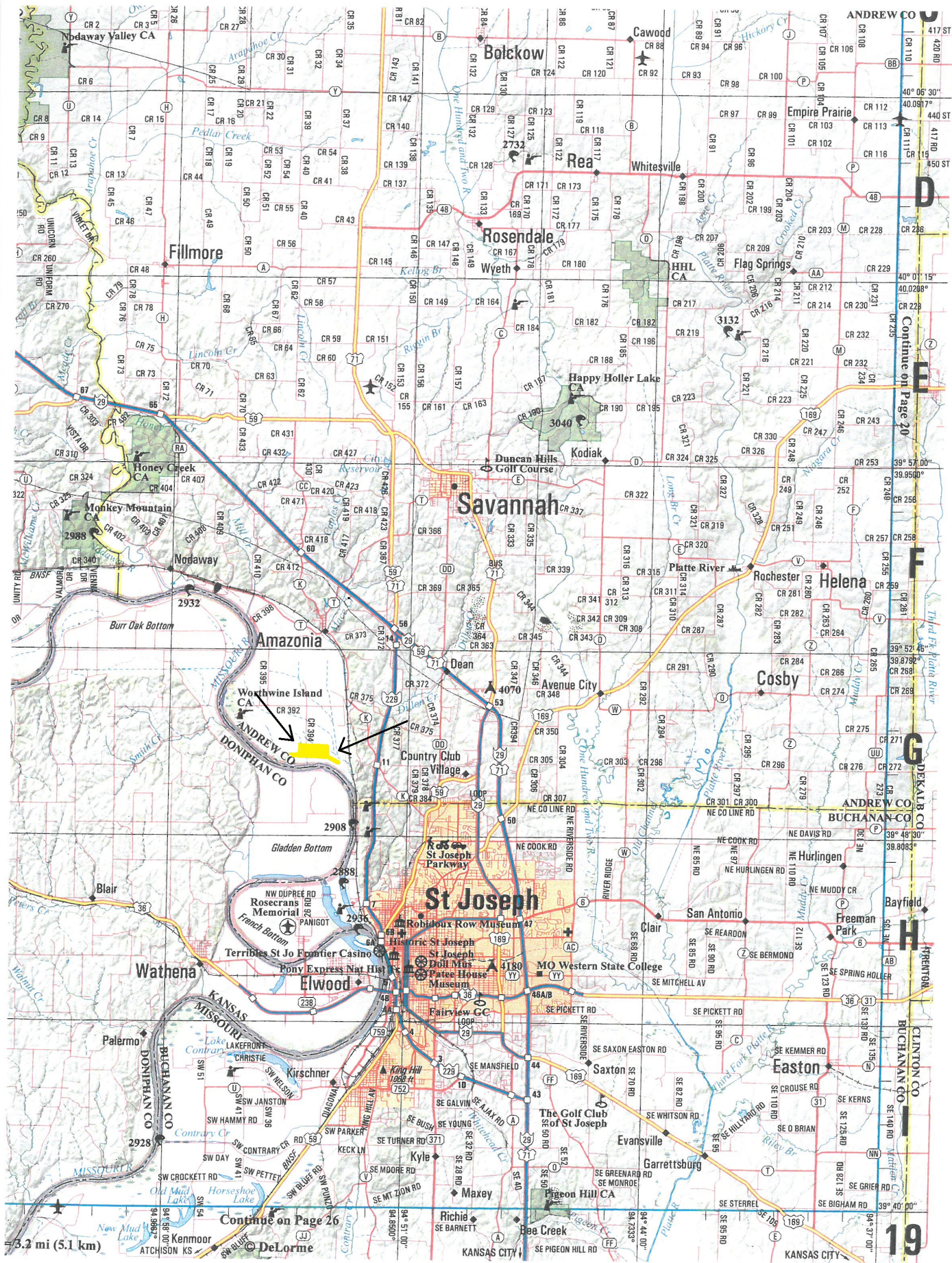
*c: Using Capabilities Class Dominant Condition Aggregation Method

Soils data provided by USDA and NRCS.



Copyright © 2003 Marceline Mapping

BUCHANAN COUNTY



Continue on Page 26