



MISSOURI Land & Farm

www.missourilandandfarm.com • Office: 660-258-3185 • Fax: 660-258-2082

**234 Acres, Mostly Terraced with Great
Access to I-35**

I-35 / Elmwood

Daviess County

\$1,193,400



CONTACT:



JEFFREY QUINN

Broker

660-734-3925

jquinn@missourilandandfarm.com

This 234 acre farm has great access and commercial location, and access to I-35. This farm features 205.9 mostly terraced tillable acres. There are another 6 acres a person could gain if desired. With mostly class 2 soils the farm lays very favorable to farming. 2018 was a good Corn year however persistent rains and late planting put a slight dent in soybean yields. For more information call Jeff Quinn today 1-660-734-3925

2018- Corn Yield 165

2019 -Late Beans 37 Bushel

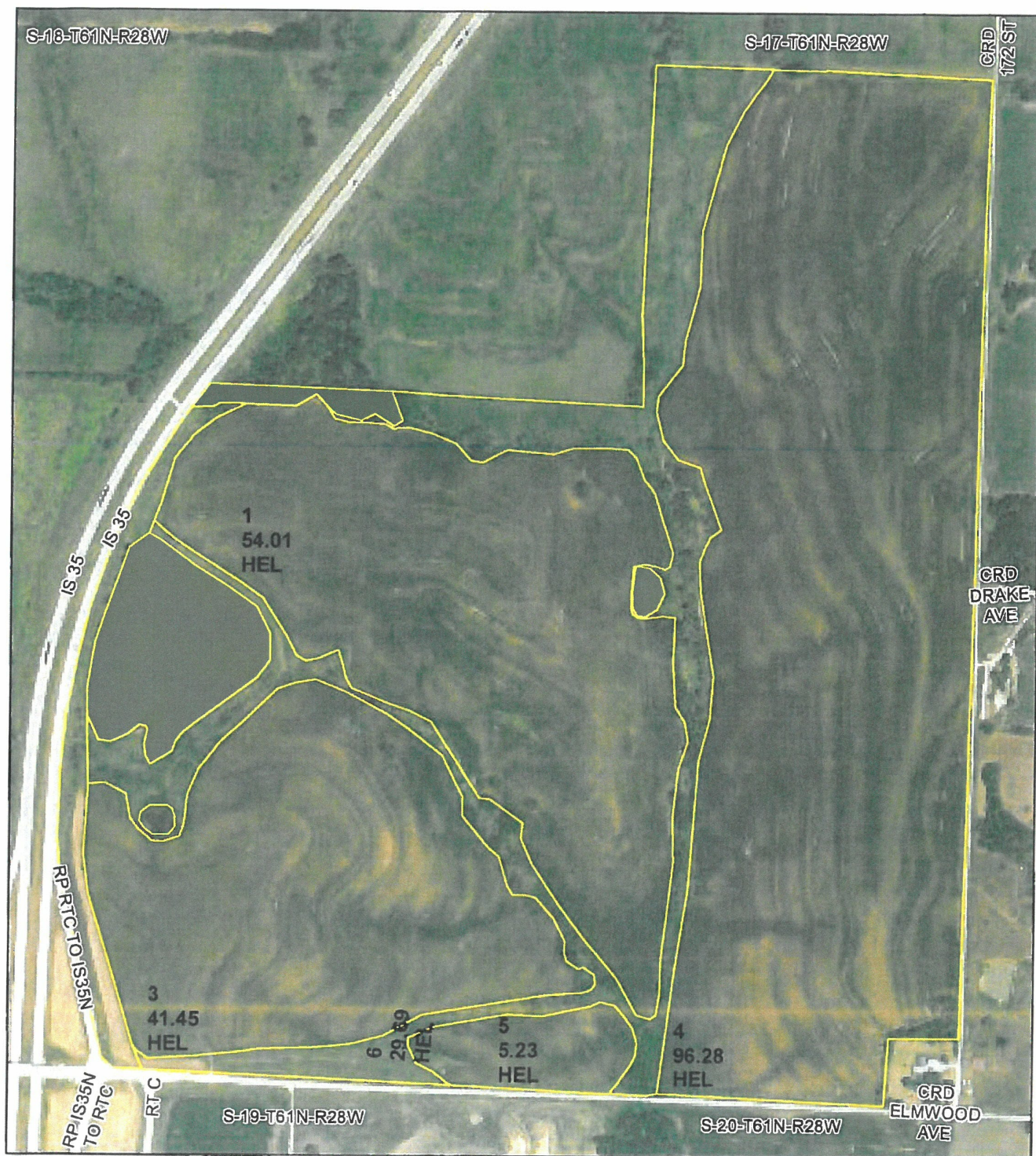
25.59 Acres 1-5% Slopes, Class III Zook Silty clay Loam

100.19 Acres 2-5% Slopes, Class II Grundy silt Loam

48.37 Acres 2-5% Slopes, Class III Lagonda Silty Clay Loam

40 Acres 5-9% Slopes, Class III Lamoni Loam

More Pics coming soon.



All Measurements are
For FSA Programs Only

Wetland Determination Identifiers

- Restricted Use
- ▼ Limited Restrictions
- Exempt from Conservation Compliance Provisions

Disclaimer: Wetland identifiers do not represent the size, shape or specific determination of the area. Refer to your original determination (CPA-026 and attached maps) for exact wetland boundaries and determinations, or contact NRCS.

Harrison Co. FSA

C=Com-YEL-GR ALF=Alfalfa-FG
 SB=Soybean-COM-GR AGM=MIXFG-AGM-FG
 HRW=Wheat-HRW-GR LGM=MIXFG-LGM-FG
 SRW=Wheat-SRW-GR RCH=Clover-Red-FG
 MILO=Sorgh-GRS-GR H=MIXFG-IGS-FG
 O=Oats-SPR-GR P=MIXFG-IGS-GZ
 GLS=MIXFG-IGS-LS TP=Timber Pasture
 All Fields Are Non-Irrigated
 *Unless notated on Map

1:5,870

Program Year: 2020

Created: 10/22/2019

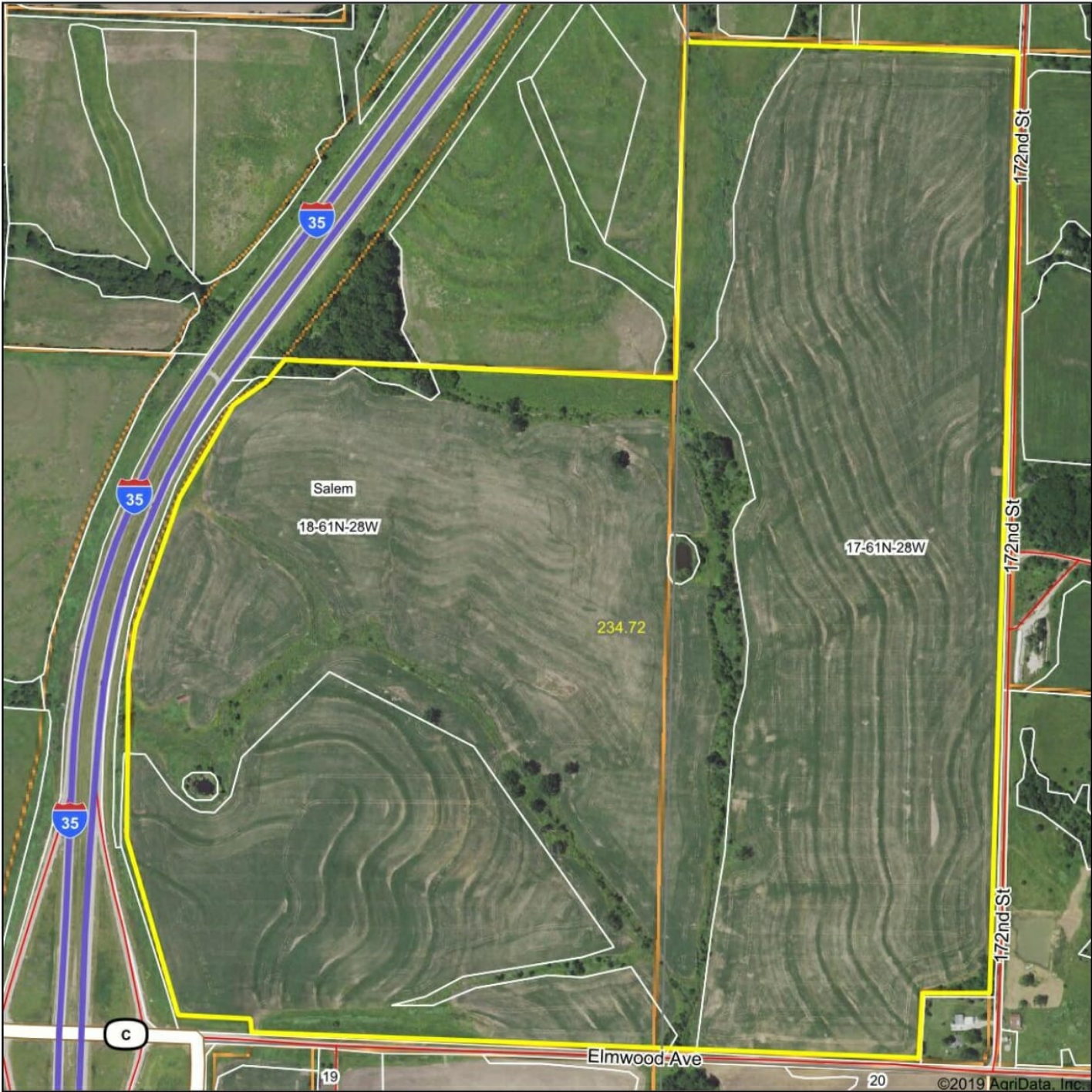
Flown: 2018-07-21

clu
 crp
 plss

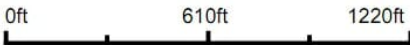
Farm 8113
 Tract 6320



Aerial Map



map center: 40° 4' 54.35, -94° 5' 12.69



18-61N-28W
Daviess County
Missouri

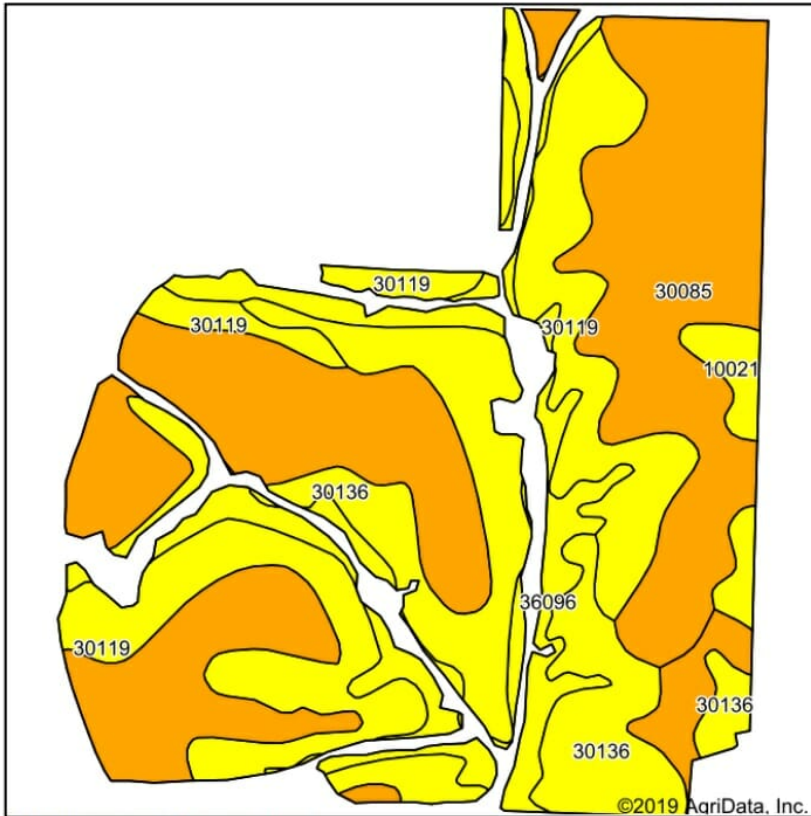
Maps Provided By:
 **surety**
CUSTOMIZED ONLINE MAPPING
© AgriData, Inc. 2019 www.AgriDataInc.com



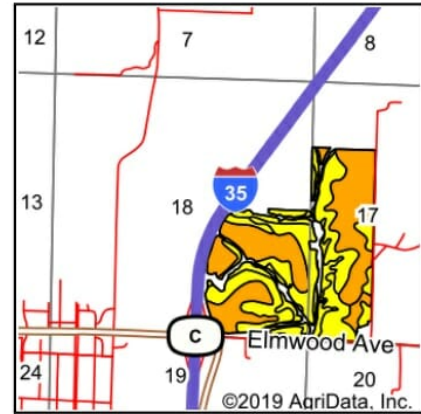
1/24/2019

Field borders provided by Farm Service Agency as of 5/21/2008.

Soils Map



Soils data provided by USDA and NRCS.



State: **Missouri**
 County: **Daviess**
 Location: **18-61N-28W**
 Township: **Salem**
 Acres: **214.18**
 Date: **1/24/2019**

Maps Provided By:

 CUSTOMIZED ONLINE MAPPING
 © AgriData, Inc. 2019 www.AgriDataInc.com



Area Symbol: MO061, Soil Area Version: 20

Code	Soil Description	Acres	Percent of field	Non-Irr Class Legend	Non-Irr Class *c	Tall fescue	Warm season grasses	Common bermudagrass	Caucasian bluestem	Alfalfa hay	Orchardgrass red clover	*n NCCPI Soybeans
30085	Grundy silt loam, 2 to 5 percent slopes	95.70	44.7%		Ile							64
30119	Lagonda silty clay loam, 2 to 5 percent slopes, eroded	48.37	22.6%		IIle	7	8	7	8	5	8	48
30136	Lamoni loam, 5 to 9 percent slopes	37.15	17.3%		IIle	7	8	7	8	5	8	57
36096	Zook silty clay loam, 1 to 5 percent slopes, frequently flooded	25.59	11.9%		IIIw	8	8	8			7	60
10086	Mandeville silt loam, 2 to 5 percent slopes	4.49	2.1%		Ile	5	7	4	7	4	6	43
10021	Greenton silty clay loam, 5 to 9 percent slopes, eroded	2.88	1.3%		IIle	7	8	7	8	5	8	43
Weighted Average						3.9	4.4	3.9	3.4	2.1	4.3	*n 58

*n: The aggregation method is "Weighted Average using major components"

*c: Using Capabilities Class Dominant Condition Aggregation Method

Soils data provided by USDA and NRCS.

Grand River Title, Inc.

All Real Estate Services Including:

Abstract of Title * Title Insurance * Escrows * Closings

Visit us on the web at: www.missouricentraltitle.com • MEMBER OF THE MISSOURI LAND TITLE ASSOCIATION

"Dedicated to Providing Fast, Professional Services at Competitive Prices"

201 N. Main Street
Gallatin, Missouri 64640

Mon.-Fri. 9:00-5:00

Telephone: 660-663-2711

Fax: 660-663-3171

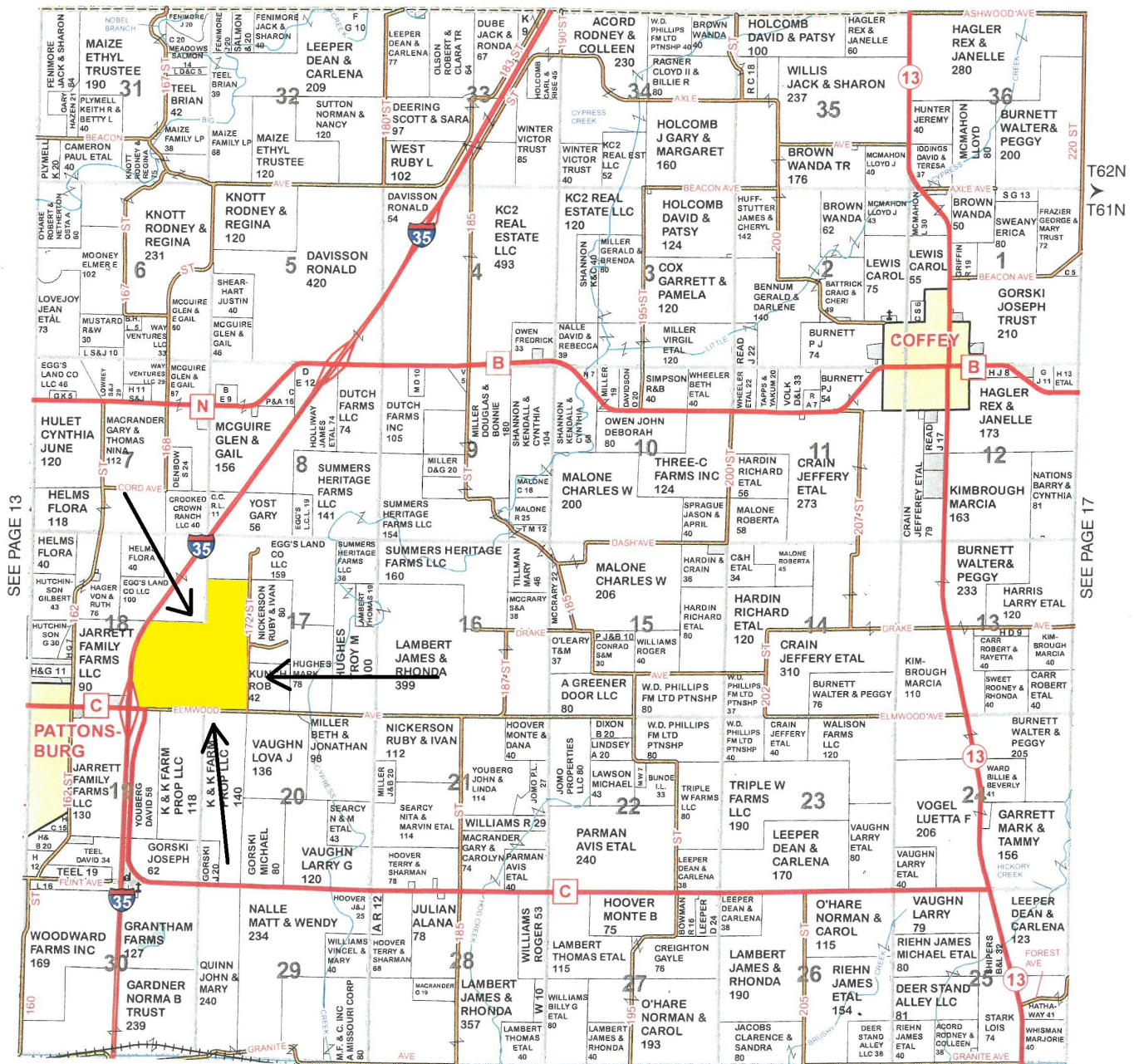


Salem

Township 61N & 62N - Range 28W

Copyright © 2014 Mapping Solutions

HARRISON COUNTY



SEE PAGE 25

