



MISSOURI Land & Farm

www.missourilandandfarm.com • Office: 660-258-3185 • Fax: 660-258-2082

279 ACRES RANDOLPH CO. - "GOBBLERS KNOB"- HUNTING/TILLABLE/BUILDING SPOTS IN CAIRO SCHOOL DISTRICT!!

Co Road 1265 and 1250, Huntsville, MO 65259

Randolph County

\$1,534,500



CONTACT:

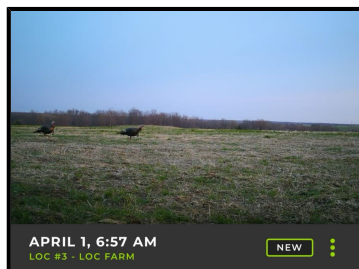


JEFFREY QUINN

Broker

660-734-3925

jquinn@missourilandandfarm.com



Gobblers Knob – 279 Acres of Prime Northern Missouri Hunting Ground

In the heart of Northern Randolph County, Missouri, just north of Huntsville, lies a tract of land that feels more like a calling than a property. They've called it *Gobblers Knob* for decades—and when you step foot on it, you'll understand why. Then you'll hear it. Long beards echo through the timber at first light, their thunderous gobbles rolling down hardwood ridges like nature's alarm clock. This is sacred ground for the true outdoors man.

Picture rolling hilltop pastures giving way to fertile, tillable bottom land. Hardwood ridges blend into thick creek bottoms, where white oaks drop acorns and deer trails are worn deep into the earth. Water flows naturally through the land, carving out the kind of meandering creeks and hidden hollows that attract wildlife year-round. It's a property that feels untouched yet groomed by time—a landscape that convinces you God Himself is an avid sportsman.

The layout is a dream: mature timber lines frame 92 tillable acres with another 6 acres to be planted this year. These acres are currently rented for \$160/acre, bringing in \$14,720-\$15,680 for the 2025 season. That's steady income, with room to negotiate upward. But this farm isn't just about income—it's about opportunity. With strategic habitat diversity, the deer and turkey hunting here is as consistent as it is thrilling. Whether you're glassing velvet bucks in August or chasing rut-crazed giants in November, the stand sites are endless. There are bedding thickets, travel corridors, ridge funnels, and open field edges practically begging for a tree stand or blind.

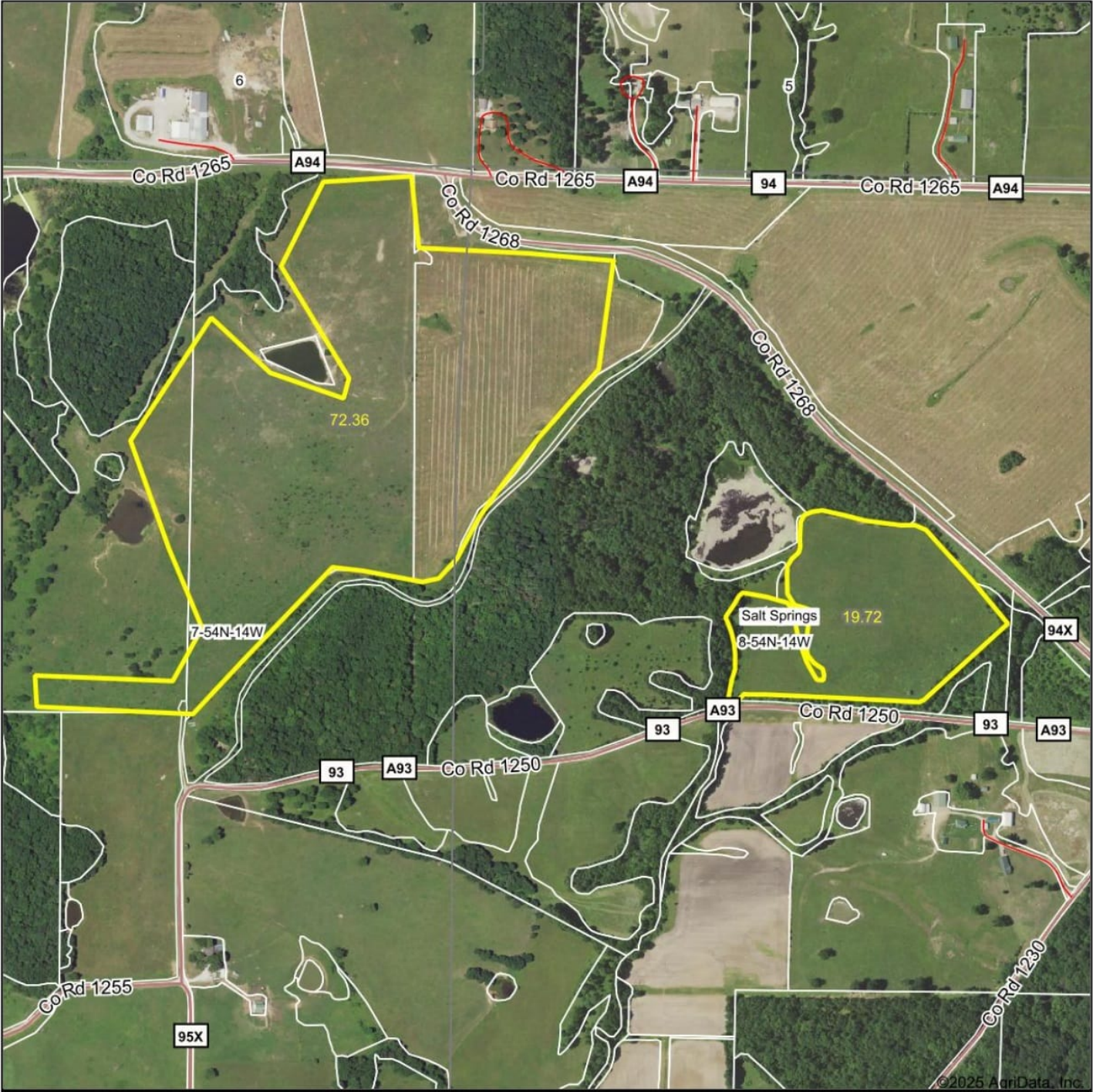
Fishing and waterfowl opportunities are top-tier as well. Just minutes from Sugar Creek Lake and Thomas Hill Reservoir, and surrounded by countless strip pits, cattle ponds, and private wetlands, this region consistently ranks among the best for goose hunting in the area. It's no wonder waterfowl enthusiasts are quietly migrating here, year after year.

Thinking long-term? This land holds value in every corner: quality timber, fertile soil, and stunning build sites with panoramic views. Whether you're building a hunting cabin, a family lodge, or just planting roots in the middle of whitetail country, *Gobblers Knob* is ready.

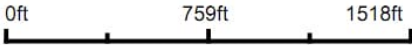
This is more than a farm—it's a destination. A legacy. The kind of place you share with your kids and grand kids, where every trail tells a story and every season brings something new.

For a private tour or more info, call or text **Jeff Quinn at 660-734-3925**.

Aerial Map



Boundary Center: 39° 29' 42.03, -92° 30' 53.18



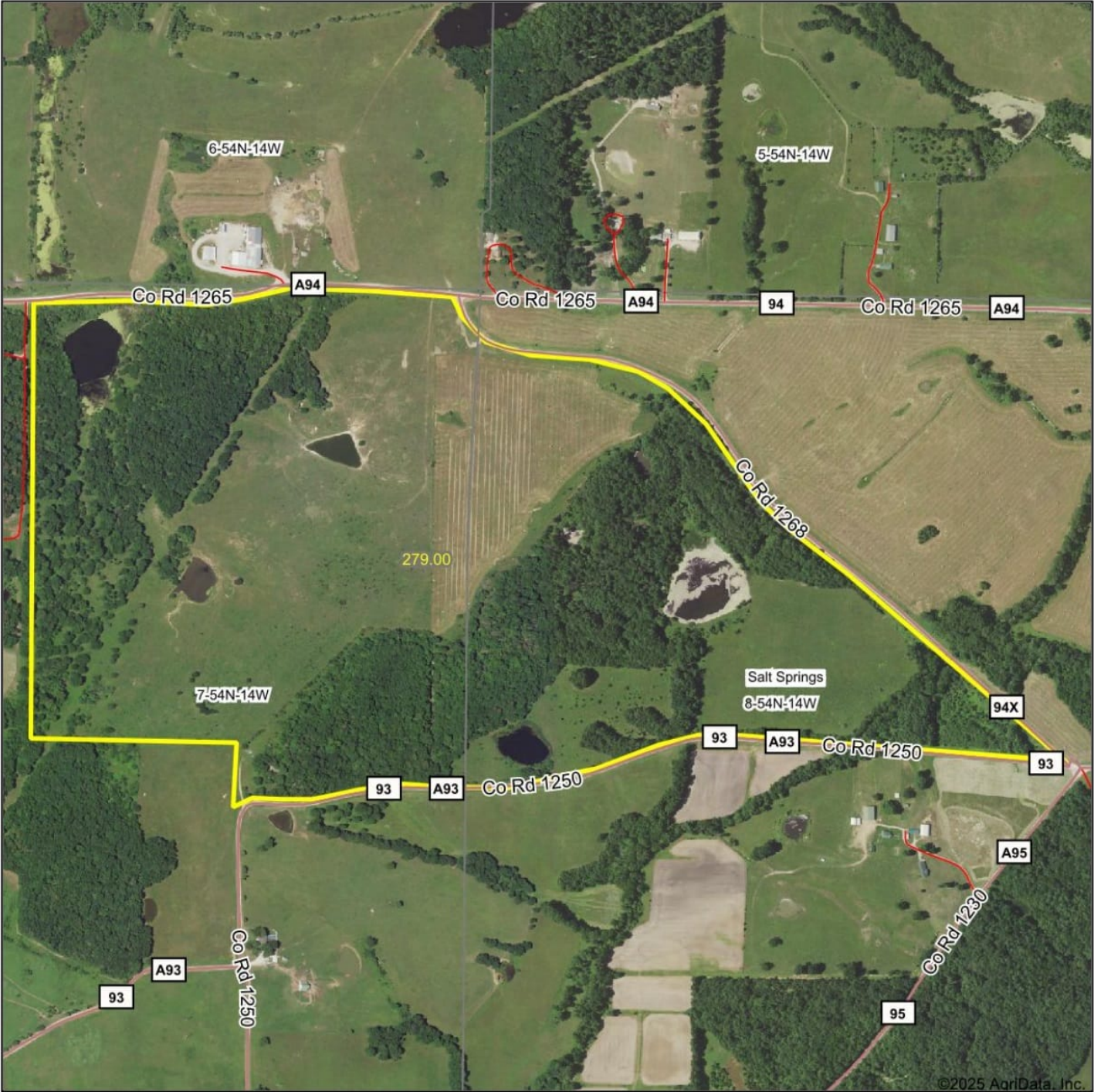
8-54N-14W
Randolph County
Missouri

Maps Provided By:
 **surety**
CUSTOMIZED ONLINE MAPPING
© AgriData, Inc. 2023 www.AgriDataInc.com

Field borders provided by Farm Service Agency as of 5/21/2008.

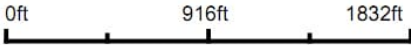
4/16/2025

Aerial Map



©2025 AgriData, Inc.

Map Center: 39° 29' 40.46, -92° 30' 51.27

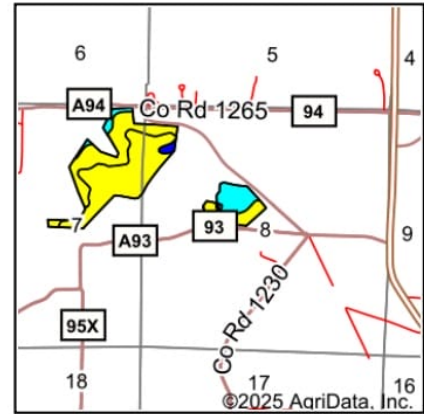
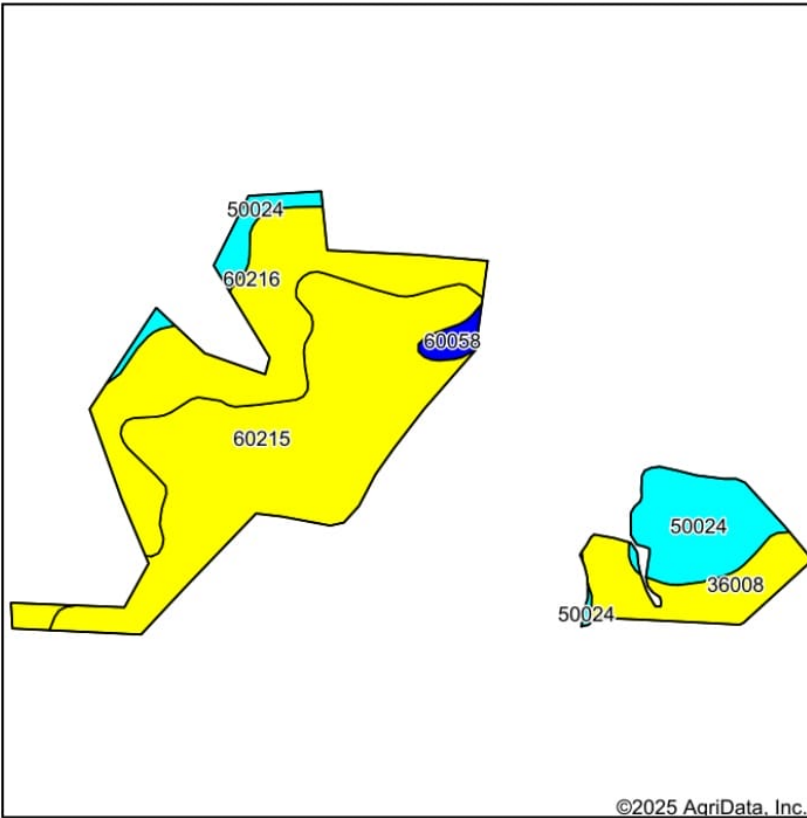


Maps Provided By:
 **surety**
CUSTOMIZED ONLINE MAPPING
© AgriData, Inc. 2023 www.AgriDataInc.com

8-54N-14W
Randolph County
Missouri

4/8/2025

Soils Map



State: **Missouri**
 County: **Randolph**
 Location: **8-54N-14W**
 Township: **Salt Springs**
 Acres: **92.08**
 Date: **4/16/2025**

Maps Provided By:

 CUSTOMIZED ONLINE MAPPING
 © AgriData, Inc. 2023 www.AgriDataInc.com



Soils data provided by USDA and NRCS.

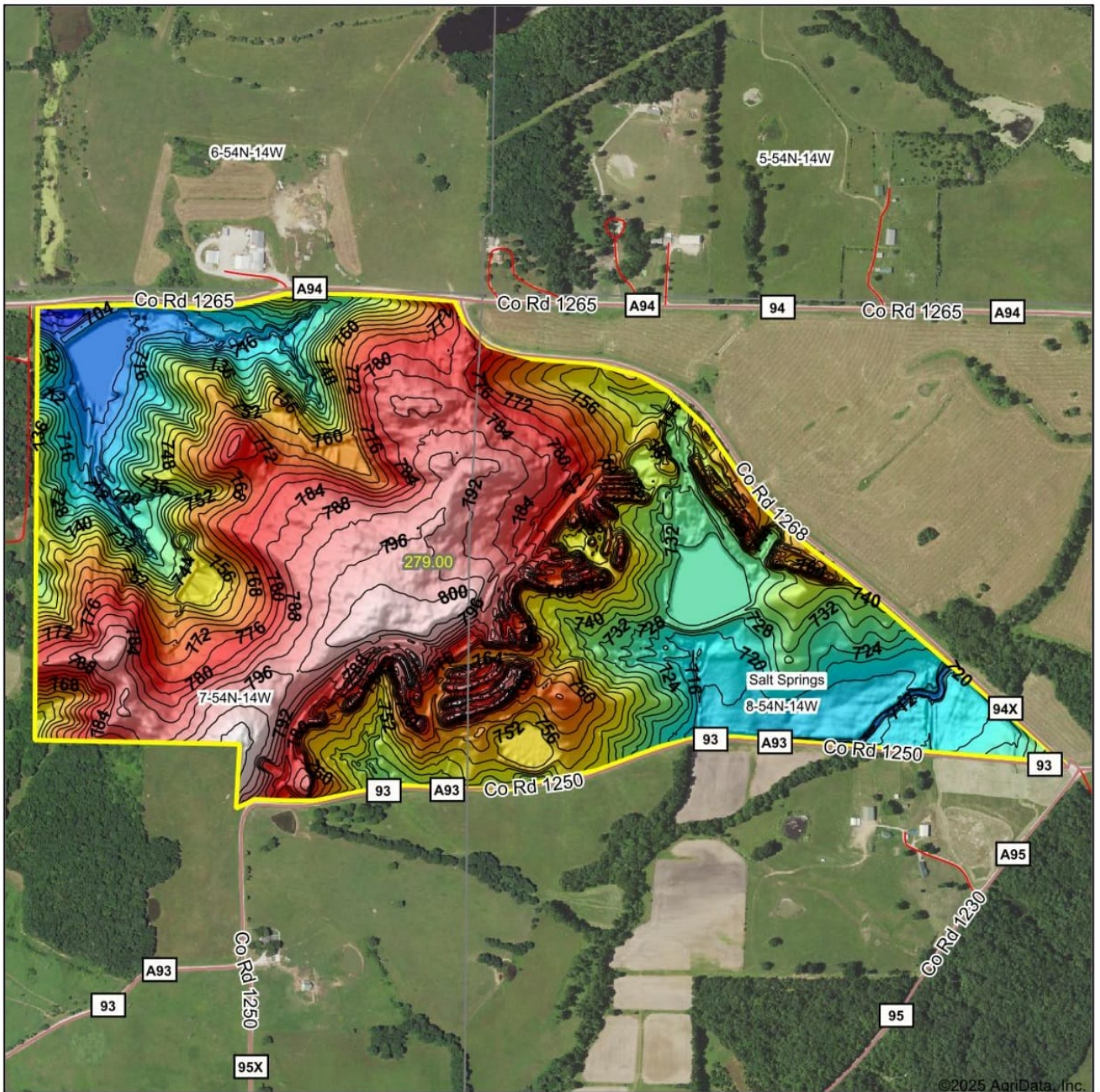
Area Symbol: MO175, Soil Area Version: 25														
Code	Soil Description	Acres	Percent of field	Non-Irr Class Legend	Non-Irr Class *c	Alfalfa hay Tons	Caucasian bluestem Tons	Common bermudagrass Tons	Corn Bu	Orchardgrass red clover Tons	Soybeans Bu	Tall fescue Tons	Warm season grasses Tons	*n NCCPI Soybeans
60215	Schuline clay loam, 3 to 9 percent slopes	42.56	46.3%		IIIe	7	8	7		7		7	8	59
60216	Schuline clay loam, 9 to 14 percent slopes	25.25	27.4%		IIIe	7	8	7		7		7	8	55
50024	Gosport silt loam, 14 to 30 percent slopes, eroded	13.67	14.8%		VIe	4	6	4	7	5	2	5	6	24
36008	Bremer silt loam, 0 to 2 percent slopes, rarely flooded	9.15	9.9%		IIIw			8		7		8	8	69
60058	Bethesda channery silt loam, 20 to 70 percent slopes	1.45	1.6%		VIIe									4
Weighted Average					3.51	5.7	6.8	6.5	1	6.6	0.3	6.7	7.6	*n 52.8

*n: The aggregation method is "Weighted Average using all components"

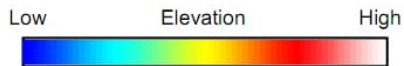
*c: Using Capabilities Class Dominant Condition Aggregation Method

Soils data provided by USDA and NRCS.

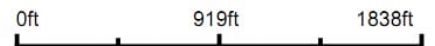
Topography Hillshade



©2025 AgriData, Inc.



Source: USGS 3 meter dem
Interval(ft): 4
Min: 688.8
Max: 807.3
Range: 118.5
Average: 756.3
Standard Deviation: 27.89 ft



4/8/2025

8-54N-14W
Randolph County
Missouri

Boundary Center: 39° 29' 40.46, -92° 30' 51.27

Maps Provided By:



© AgriData, Inc. 2023

www.AgridataInc.com