



# MISSOURI Land & Farm

www.missourilandandfarm.com • Office: 660-258-3185 • Fax: 660-258-2082

**296 Acres Prime Glasgow, MO – Chariton  
Co. Bottom Ground!!**  
**Hwy 5, Glasgow, MO 65254**

**Chariton**

**\$12,345**

Aerial Map



Map Center: 39° 17' 28.44", -92° 50' 51.04"

20-52N-17W  
Chariton County  
Missouri

Map Provided By:  
**surety**  
© AgData, Inc. 2023  
www.AgData.com

## CONTACT:



**JEFFREY QUINN**

Broker

**660-734-3925**

jquinn@missourilandandfarm.com

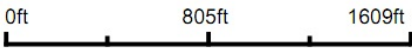
Using our network of buyers and sellers we were able to put this farm sale together for our sellers and buyers without it being actively on the market.

If you're looking for a specific property or wanting a free evaluation on your property please give us a call today!!!

Aerial Map



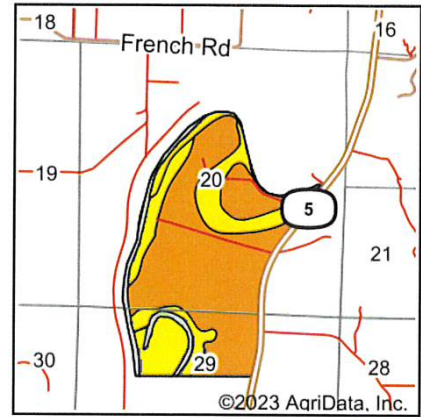
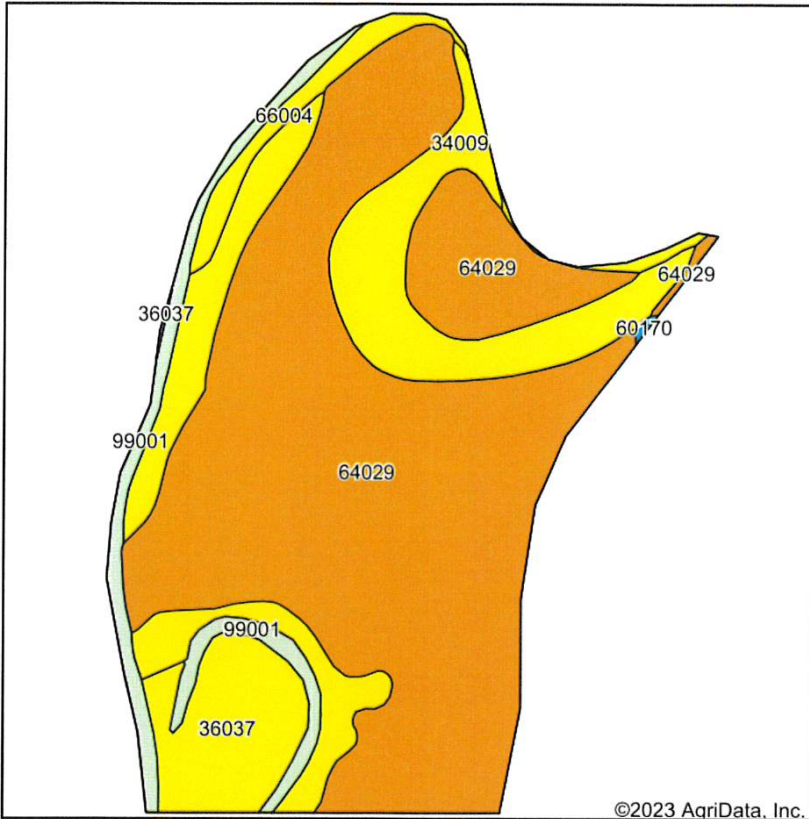
Map Center: 39° 17' 28.44, -92° 50' 51.04



**20-52N-17W**  
**Chariton County**  
**Missouri**



# Soils Map



State: **Missouri**  
 County: **Chariton**  
 Location: **20-52N-17W**  
 Township: **Chariton**  
 Acres: **296**  
 Date: **3/21/2023**

Maps Provided By: **surety**  
 CUSTOMIZED ONLINE MAPPING  
 © AgriData, Inc. 2023 www.AgriDataInc.com



Soils data provided by USDA and NRCS.

Area Symbol: MO041, Soil Area Version: 25

Code	Soil Description	Acres	Percent of field	Non-Irr Class Legend	Non-Irr Class *c	Alfalfa hay Tons	Caucasian bluestem Tons	Common bermudagrass Tons	Corn Bu	Grain sorghum Bu	Orchardgrass red clover Tons	Soybeans Bu	Tall fescue Tons	Warm season grasses Tons	V
64029	Tina silt loam, 0 to 2 percent slopes, rarely flooded	190.08	64.2%		IIw				8			7		8	9
34009	Gifford silty clay loam, 2 to 9 percent slopes, eroded, rarely flooded	58.87	19.9%		IIIe				7			6		7	8
36037	Tice silt loam, 0 to 2 percent slopes, frequently flooded	22.07	7.5%		IIw				8			8		8	9
99001	Water	16.26	5.5%												
66004	Dockery silt loam, 0 to 2 percent slopes, frequently flooded	8.48	2.9%		IIIw				8	5	4	9	1	8	10
60170	Menfro silt loam, 9 to 30 percent slopes	0.24	0.1%		VIe	7	8		7			7		7	8
Weighted Average					*-	*-	*-		7.4	0.1	0.1	6.5	*-	7.4	8.3

\*n: The aggregation method is "Weighted Average using all components"

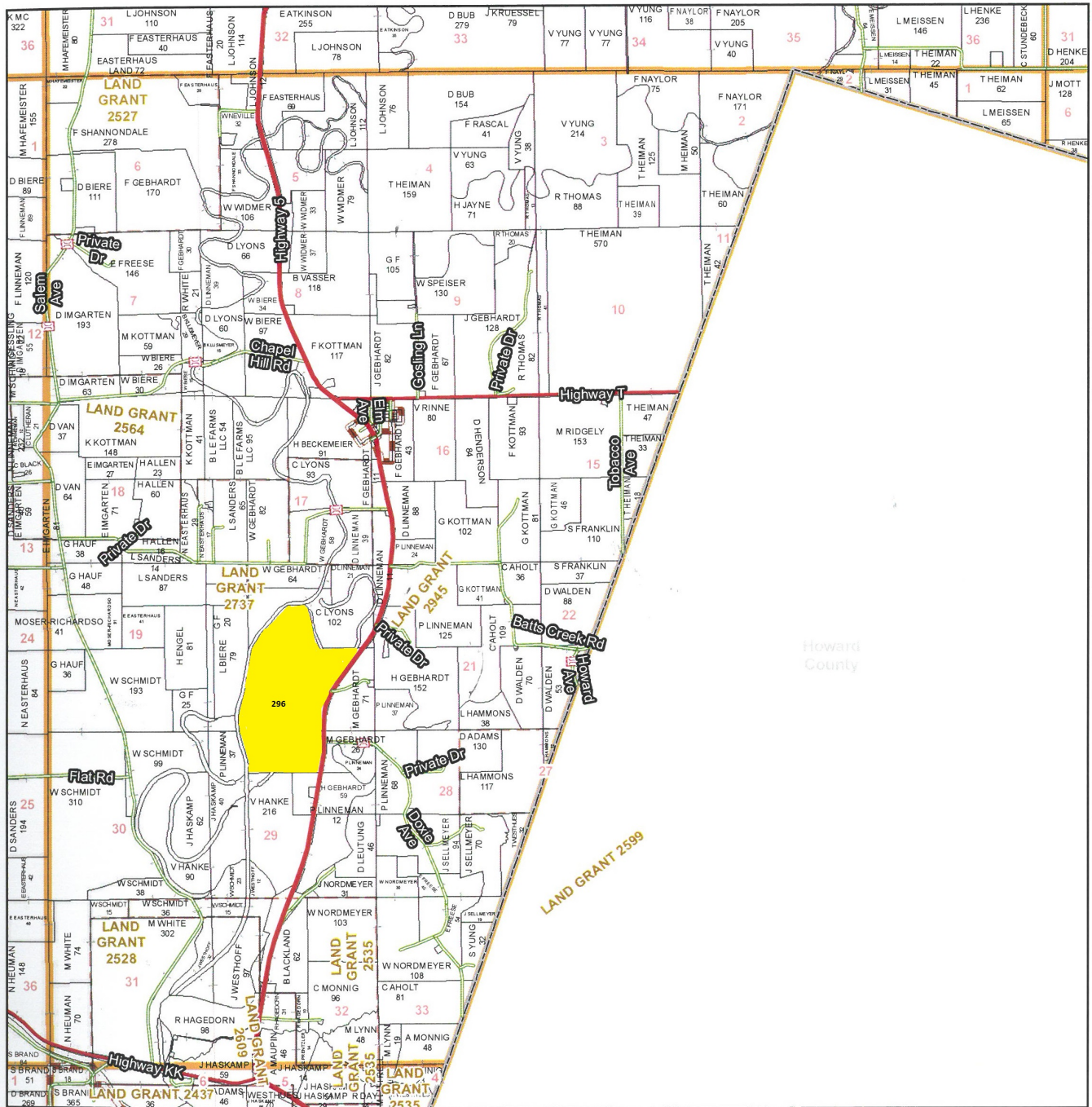
\*c: Using Capabilities Class Dominant Condition Aggregation Method

\*- Non Irr Class weighted average cannot be calculated on the current soils data due to missing data.

Soils data provided by USDA and NRCS.

# T52N - R17W

See Page 55



See Page 69

Chariton County Commission  
Tony McColm - Presiding Commissioner  
Danny Price - Western District Commissioner  
Steve Atkinson - Eastern District Commissioner

Data Courtesy Chariton County  
Geographic Information System

Darrin Gladbach - Assessor

This data was primarily  
developed for tax  
purposes and is not  
considered survey accurate.

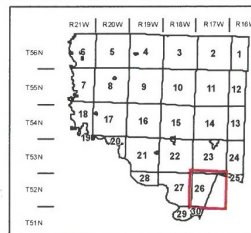
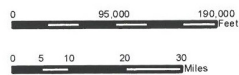
Most parcels > 10 ac labeled

GIS & Map Development By:



www.midlandgis.com

© Copyright Chariton County, MO



## Legend

- City Limits
- Township-Range
- Sections
- Land Grant
- Political Township
- Land Ownership
- Subdivisions
- Conservation & US
- US Highways
- ST Highways
- CO Highways
- Streets
- Rail Roads
- Streams
- Land Hooks
- Bridges