



MISSOURI Land & Farm

www.missourilandandfarm.com • Office: 660-258-3185 • Fax: 660-258-2082

**332 Acres Hog Buildings, and Tillable
Ground!!**

Hwy M, Moberly, MO 65270

Randolph County

\$3,746,000



CONTACT:



DAVE ATKINSON

Sales & Auctioneer

660-788-3333

datkinson@missourilandandfarm.com

CONTACT:



JERRY CRUTCHFIELD

Sales

660-670-1249

jerrydc@cvalley.net



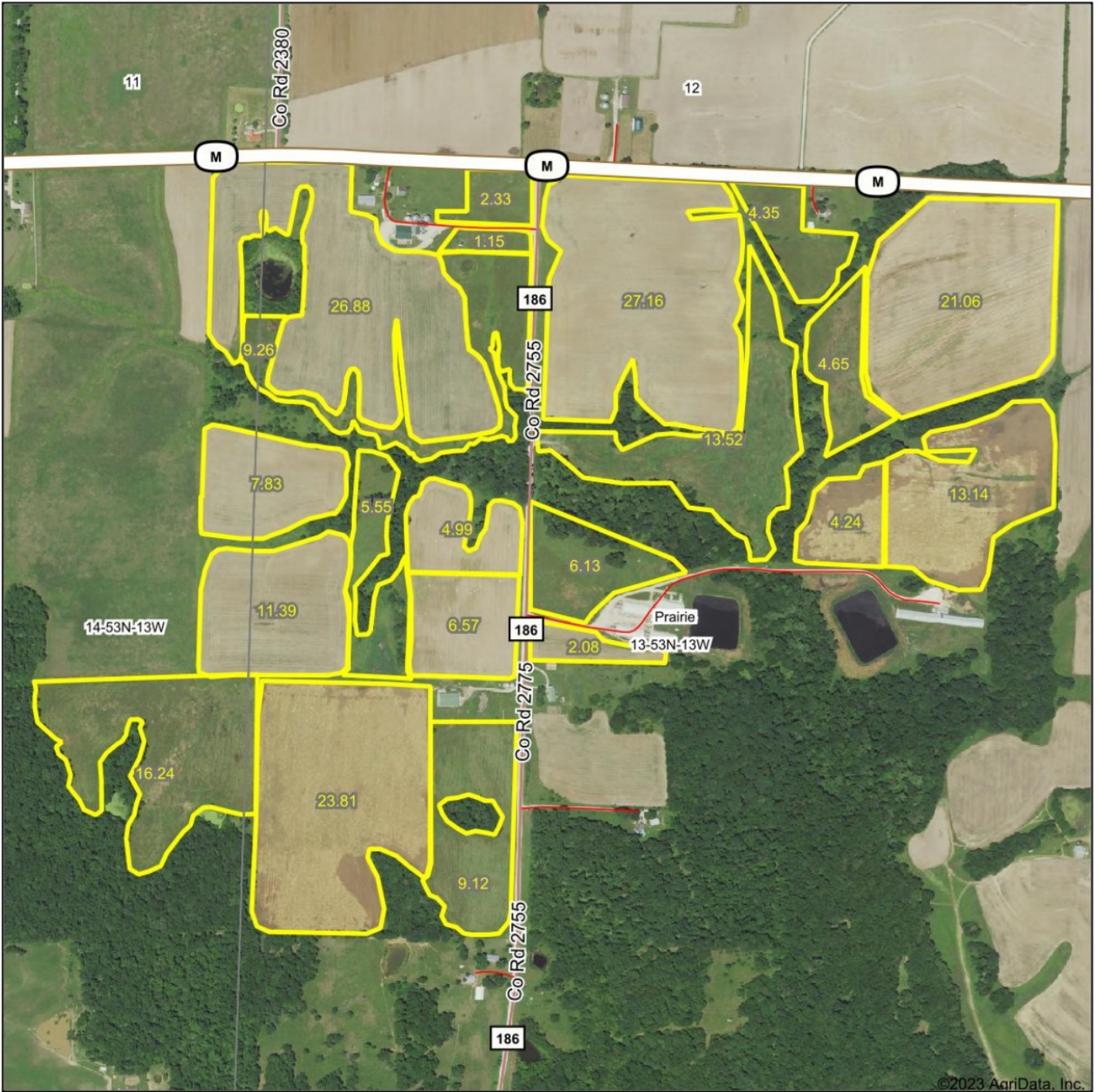
332 acre m/l Farm in Randolph Co. Missouri for sale on Highway M approx 5 miles East of Moberly, Missouri, nice tillage acres, hay fields, timber, large machinery shed, computer operated feed mill with grain storage, 2400 head hog facilities with nursery.

Mostly all redone in 2018, currently in use.

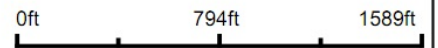
Rare opportunity for a large tract of land with great income so close to town.

Call Jerry Crutchfield 660-670-1249 or Dave Atkinson 6660-788-3333

Aerial Map



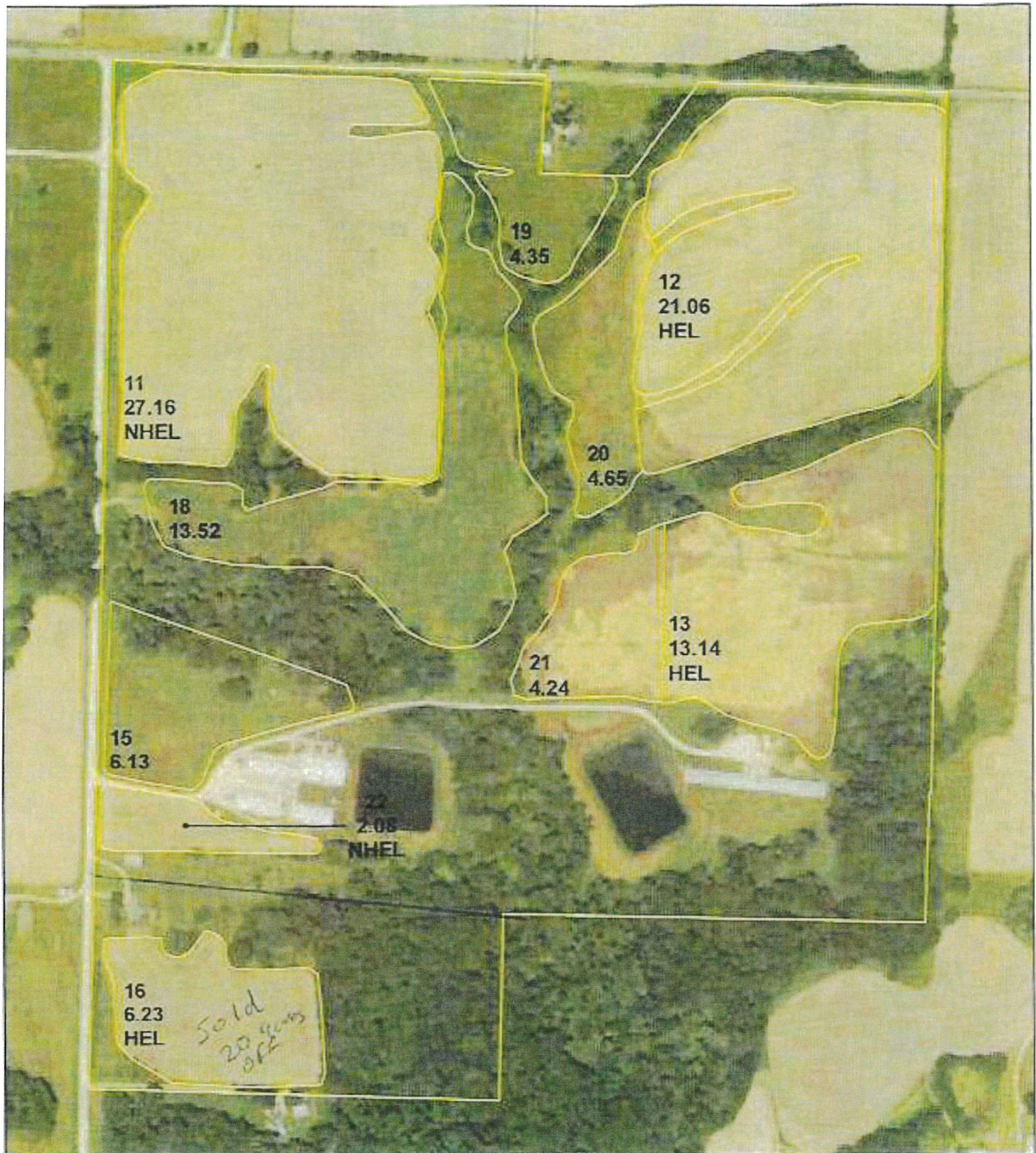
Map Center: 39° 23' 14.46, -92° 19' 20.59



13-53N-13W
Randolph County
Missouri



1/9/2023



All Measurements are
For FSA Programs Only

Wetland Determination Identifiers

- Restricted Use
- ▼ Limited Restrictions
- Exempt from Conservation Compliance Provisions

Disclaimer: Wetland identifiers do not represent the size, shape or specific determination of the area. Refer to your original determination (CPA-026 and attached maps)

Randolph Co. FSA

SB=Soybeans-COM-GR, DCDB=Double Crop SB
 C=Com-Yel-GR, Whit=Wheat-SRW-GR
 Milo=Gr Sorghum-GR-GR, Hay=Grass-FTA-Fg
 Gz=Grass-FTA-Gz, Ls=Grass-FTA-Left Stand
 ALF=Alfalfa-None-Fg, Oats=Oats-SPR-Fg
 ALF Mix=Mixed Fg-AGM-Fg, FP=Food Plot
 Clover=Clover-Red-Fg
 Mixed IGS or LGM=Mixed Fg LGM or IGS
 *Unless noted as Misc

1:4,850

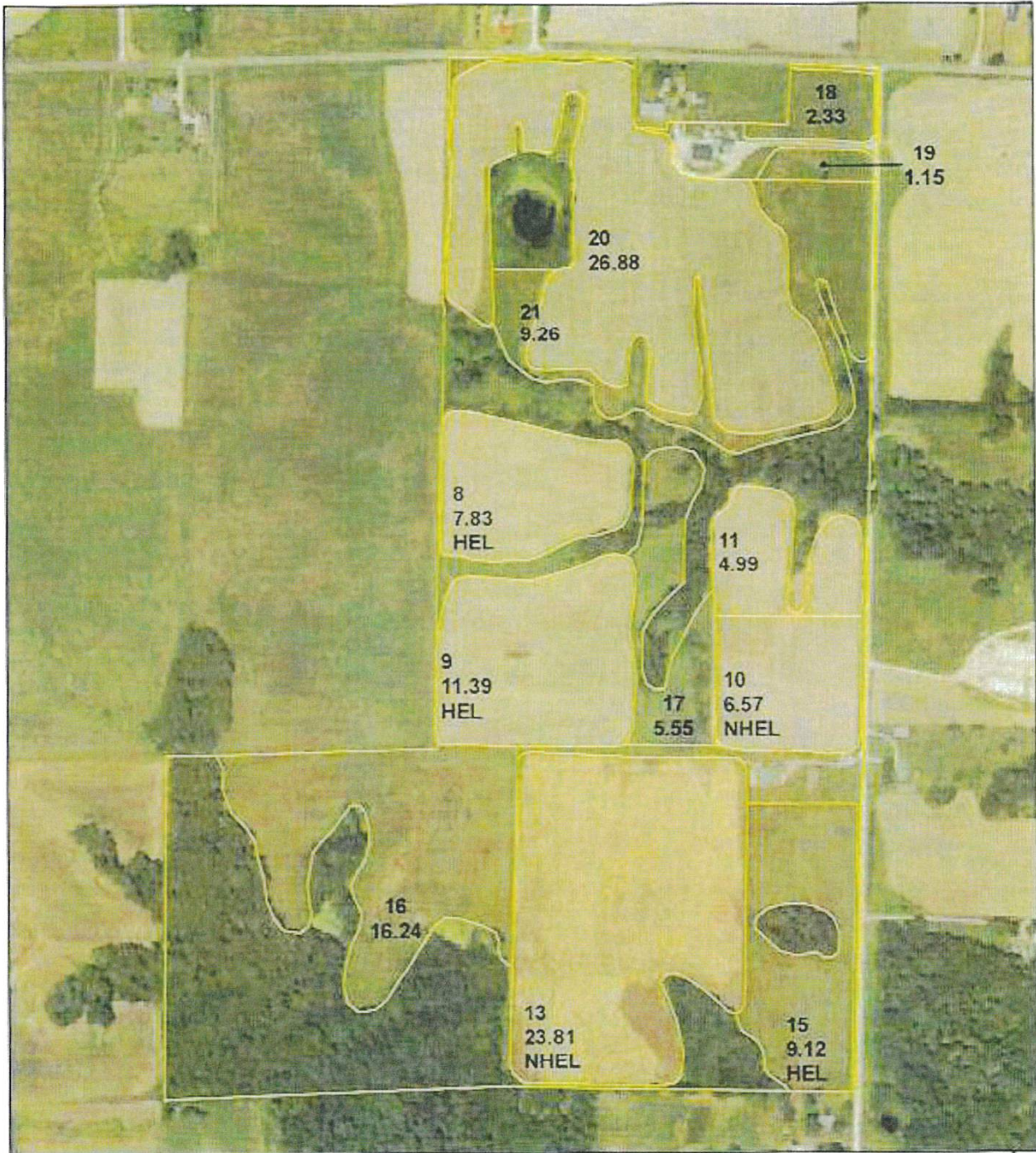
Program Year: 2023

Created: 10/18/2022

Flown: 2022-6-20



Farm 5381
Tract 8585



All Measurements are
For FSA Programs Only

Wetland Determination Identifiers

- Restricted Use
- ▼ Limited Restrictions
- Exempt from Conservation Compliance Provisions

Disclaimer: Wetland identifiers do not represent the size, shape or specific determination of the area. Refer to your original determination (CPA-026 and attached maps) for exact wetland boundaries and determinations, or contact NRCS.

Randolph Co. FSA

SB=Soybeans-COM-GR, DC=Double Crop SB
C=Corn-Yel-GR, Wht=Wheat-SRW-GR
Milo=Gr Sorghum-GR-GR, Hay=Grass-FTA-Fg
Gz=Grass-FTA-Gz, Ls=Grass-FTA-Left Stand
ALF=Alfalfa-Nono-Fg, Oats=Oats-SPR-Fg
ALF Mix=Mixed Fg-AGM-Fg, FP=Food Plot
Clover=Clover-Red-Fg
Mixed IGS or LGM=Mixed Fg LGM or IGS
*Unless notated on Map

1:5,860

Program Year: 2023

Created: 10/18/2022

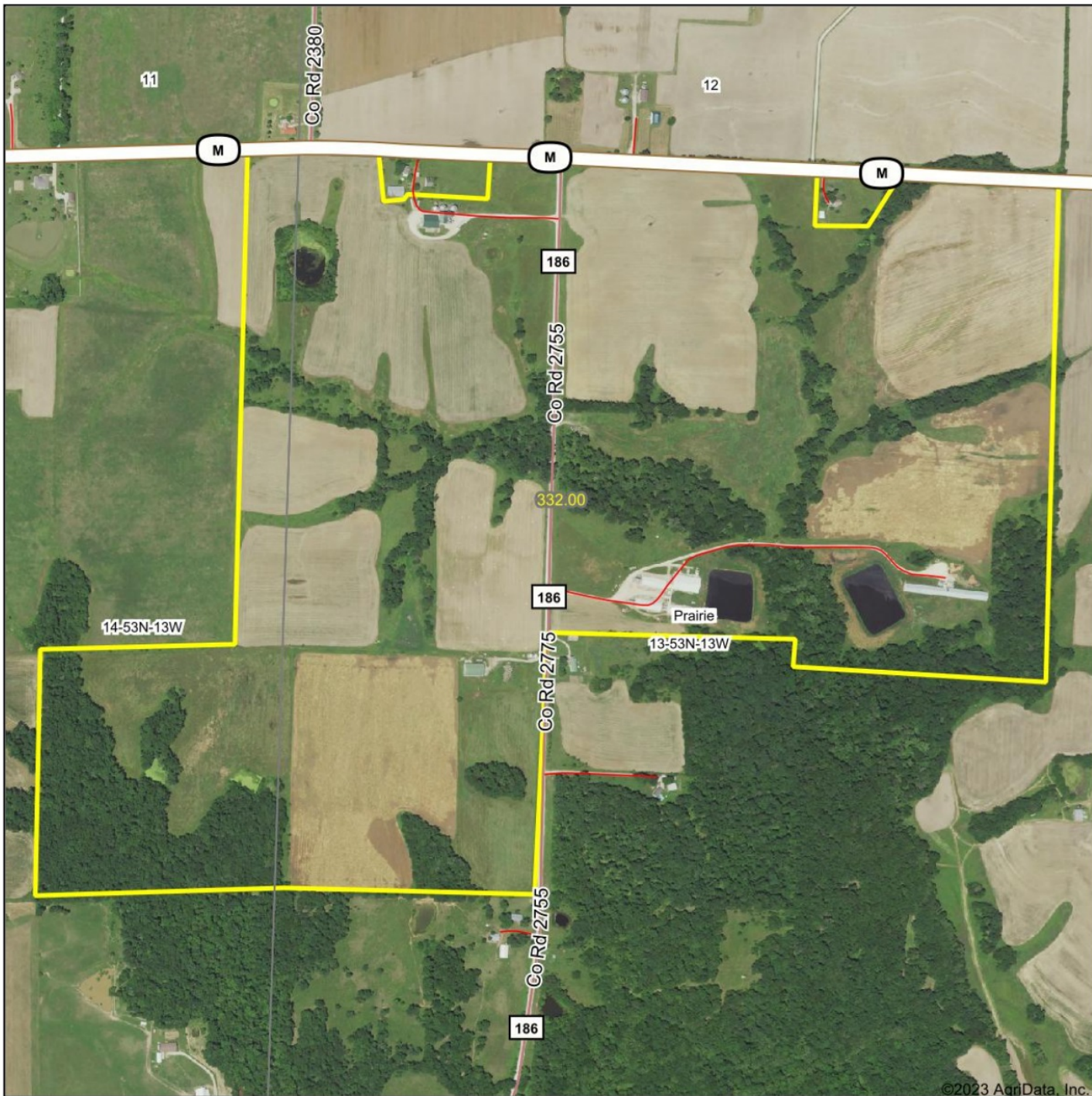
Flown: 2022-6-20



- clu
- crp

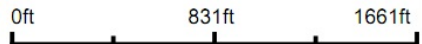
Farm 5382
Tract 9183

Aerial Map



©2023 AgriData, Inc.

Map Center: 39° 23' 13.03, -92° 19' 21.88



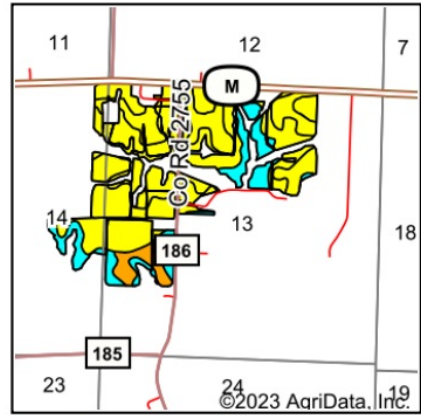
13-53N-13W
Randolph County
Missouri



1/13/2023

Maps Provided By:
 **surety**
CUSTOMIZED ONLINE MAPPING
© AgriData, Inc. 2021 www.AgrIDataInc.com

Soils Map



State: **Missouri**
 County: **Randolph**
 Location: **13-53N-13W**
 Township: **Prairie**
 Acres: **221.45**
 Date: **1/9/2023**



Soils data provided by USDA and NRCS.

Area Symbol: MO175, Soil Area Version: 23													
Code	Soil Description	Acres	Percent of field	Non-Irr Class Legend	Non-Irr Class *c	Alfalfa hay Tons	Caucasian bluestem Tons	Common bermudagrass Tons	Orchardgrass red clover Tons	Tall fescue Tons	Warm season grasses Tons	*n NCCPI Soybeans	
50059	Mexico silt loam, 1 to 4 percent slopes, eroded	89.95	40.6%	Yellow	IIIe							53	
60022	Leonard silt loam, 1 to 6 percent slopes, eroded	70.93	32.0%	Yellow	IIIe							51	
50030	Keswick silt loam, 9 to 20 percent slopes, eroded	35.36	16.0%	Cyan	VIe							36	
50058	Mexico silt loam, 0 to 2 percent slopes	14.91	6.7%	Yellow	IIIw							59	
50021	Calwoods silt loam, 2 to 5 percent slopes, eroded	10.30	4.7%	Orange	Ile	5	7		6	7	6	7	50
Weighted Average						3.43	0.2	0.3	0.3	0.3	0.3	*n 49.9	

*n: The aggregation method is "Weighted Average using all components"
 *c: Using Capabilities Class Dominant Condition Aggregation Method

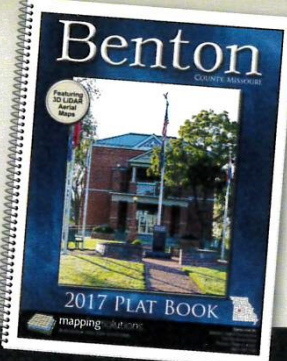
Soils data provided by USDA and NRCS.

We offer Plat Books in 16 states...

- Alabama
- Indiana
- Michigan
- Oklahoma
- Arkansas
- Iowa
- Minnesota
- Ohio
- Florida
- Kansas
- Mississippi
- Pennsylvania
- Illinois
- Louisiana
- Missouri
- Wisconsin



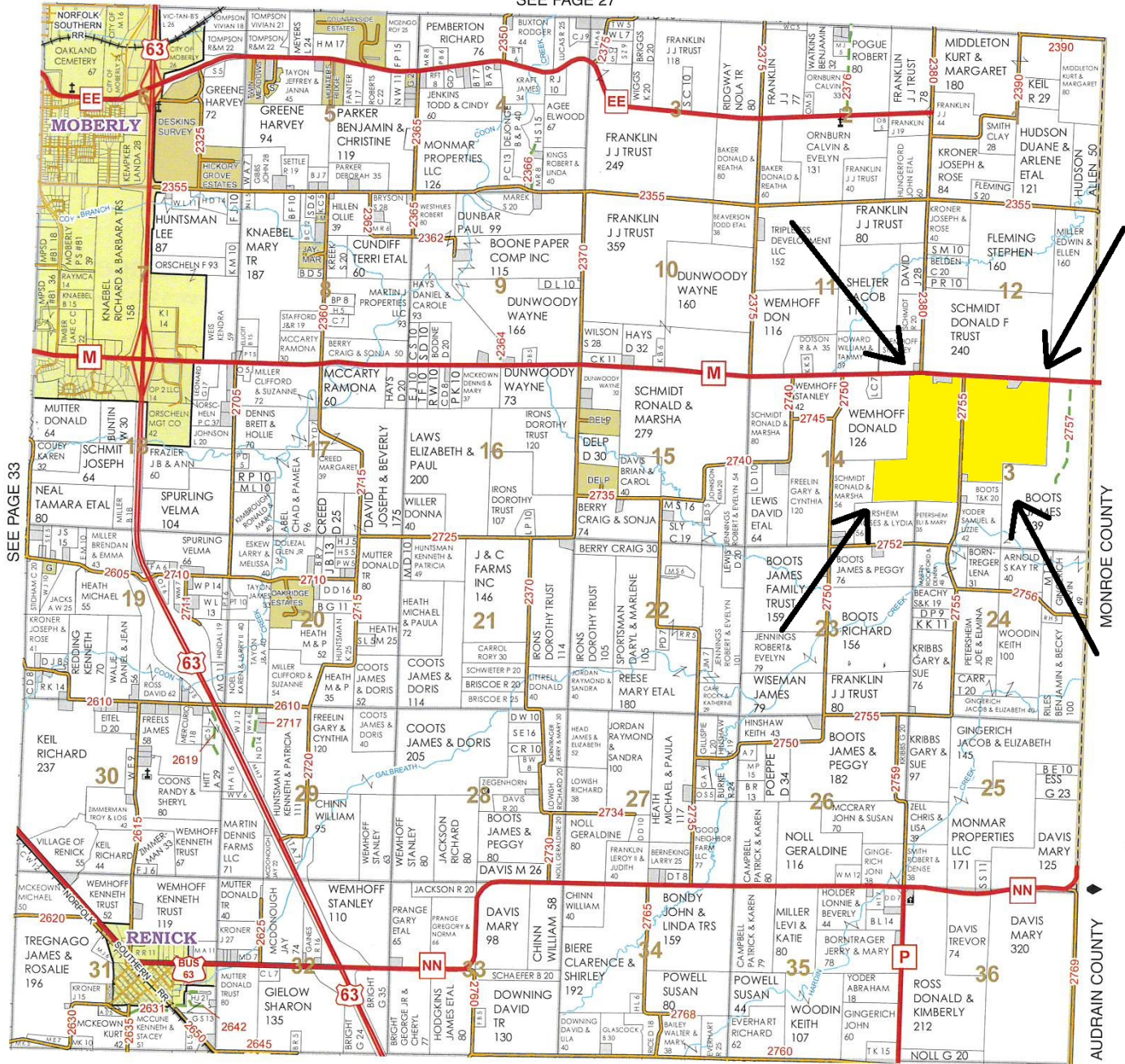
mappingsolutionsGIS.com



Township 53N - Range 13W

Copyright © 2018 Mapping Solutions

SEE PAGE 27



SEE PAGE 33

SEE PAGE 41