



# MISSOURI Land & Farm

www.missourilandandfarm.com • Office: 660-258-3185 • Fax: 660-258-2082

## 347.1 Acre Auction, Macon County, February 24, 2021 (6 Tracts!!!)

Colorado Ave, Goldsberry MO

Macon County

### LAND AUCTION!!

February 24, 2021 10 AM Ethel Community Center

#### 349 Acres

**Tract 1 : 148 Acres ±**  
Home, Cattle Facilities, Pasture, Hunting, 5 Ponds

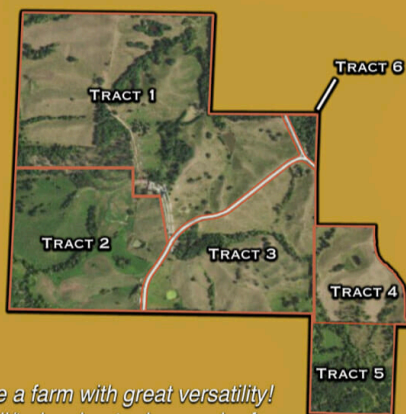
**Tract 2 : 72 Acres ±**  
Hoop Barn, 1 Pond, Pasture, Hunting

**Tract 3 : 67 Acres ±**  
2 Ponds, Pasture, Wooded Draws

**Tract 4 : 30.44 Acres ±**  
1 Pond, Pasture

**Tract 5 : 27.25 Acres ±**  
Timber, Hunting, Pasture

**Tract 6 : 4 Acres ±**  
Timber, Potential Building Site



*This is a great opportunity to purchase a farm with great versatility!  
Whether you're a cattleman or whitetail/turkey hunter in search of a  
sizeable tract, this farm has something for you!*

Full Listing, Maps, & Video available : [www.MissouriLandAndFarm.com](http://www.MissouriLandAndFarm.com)



### "WE KNOW LAND"

Dave Atkinson, Auctioneer  
660-788-3333

Jeff Quinn, Broker  
660-734-3925

### CONTACT:



### DAVE ATKINSON

Sales & Auctioneer

660-788-3333

[datkinson@missourilandandfarm.com](mailto:datkinson@missourilandandfarm.com)



**LAND AUCTION**

13801 Colorado Ave. Elmer MO 63538

February 24 2021. 10 A.M.

**We Will Sell the Following At Public Auction:**

**Auctioneers Note:** What a great opportunity to purchase a Home/Cattle/Hunting Farm at Public Auction. Call or text Dave Atkinson 660-788-3333 or Je? Quinn 660-734-3925 for more information.

Auction to be held At the Ethel Community Center in Ethel MO. The address for the community center is 111 N Commercial St Ethel, MO, MO 63539

**SURVEY COMPLETE SALE IS NOW 347.1 ACRES UPDATED TRACTS BELOW!!**

Tract 1 - 147.1 acres +/-: House, 2 Cattle barns, Grain bin, 5 ponds, pasture, wooded draws, home has 4 BR, 2.5 baths, garage, cattle lots.

Tract 2 - 70.6 Acres +/-: Hoop Barn, 1 Pond, Pasture, Wooded Draws

Tract 3 - 67.2 Acres +/-: 2 Ponds, Pasture, Wooded Draws

Tract 4 - 28.7 Acres +/-: 1 Pond, Pasture

Tract 5 - #29 Acres +/-: Timber, Pasture

Tract 6 - 4.5 acres +/-: Timber, Building Spot

**REAL ESTATE TERMS:** 10% down Auction Day upon entry into Real Estate contracts with balance due and possession given at closing, preferably within 30 days. Real Estate sells with owner confirmation. Statements Auction Day take precedence over ads

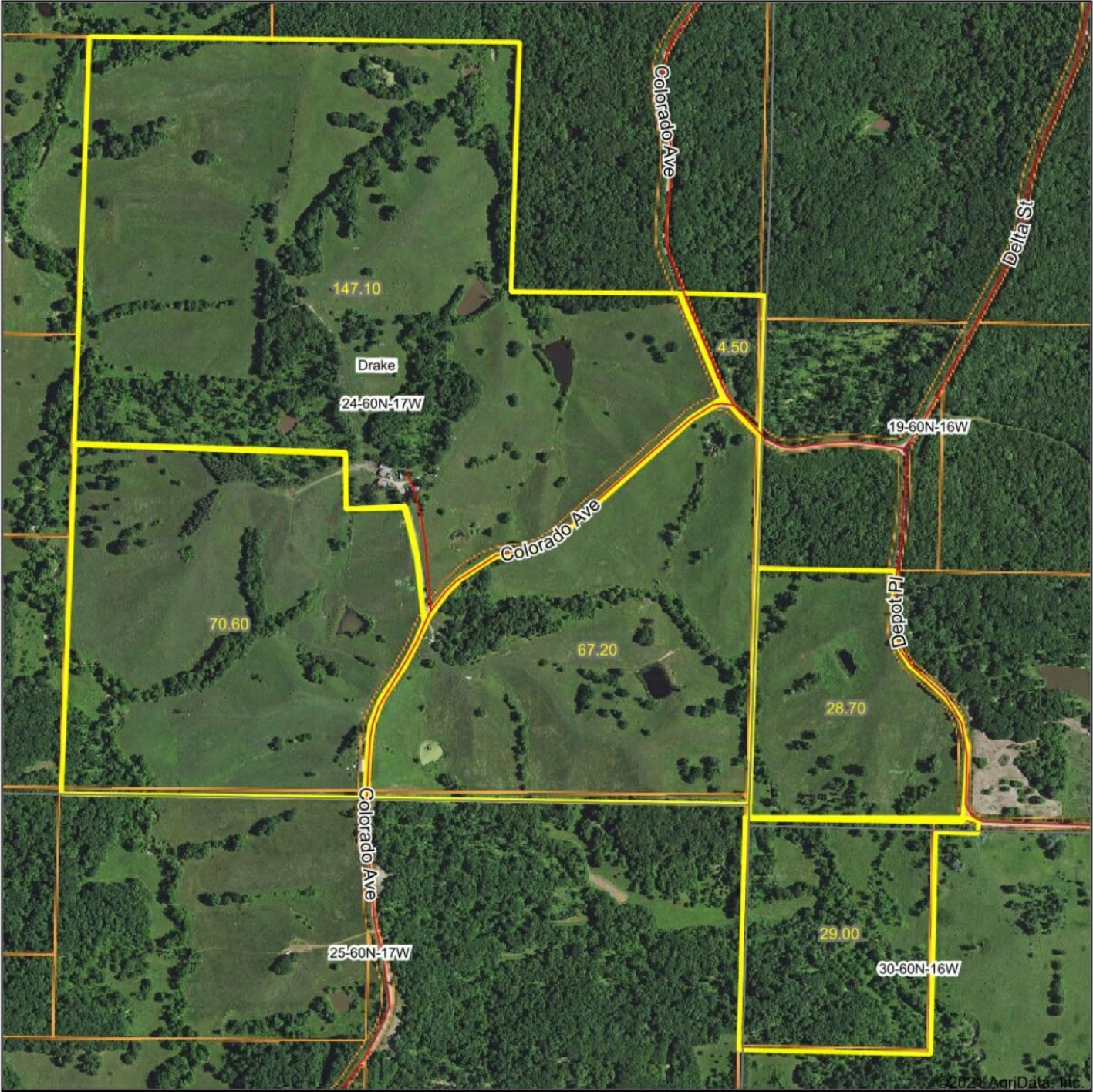
**MISSOURI LAND AND FARM**

Dave Atkinson 660-788-3333 Je? Quinn 660-734-3925

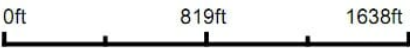
Taxes: Approximately \$841



Aerial Map



Map Center: 39° 59' 40.3, -92° 44' 21.62



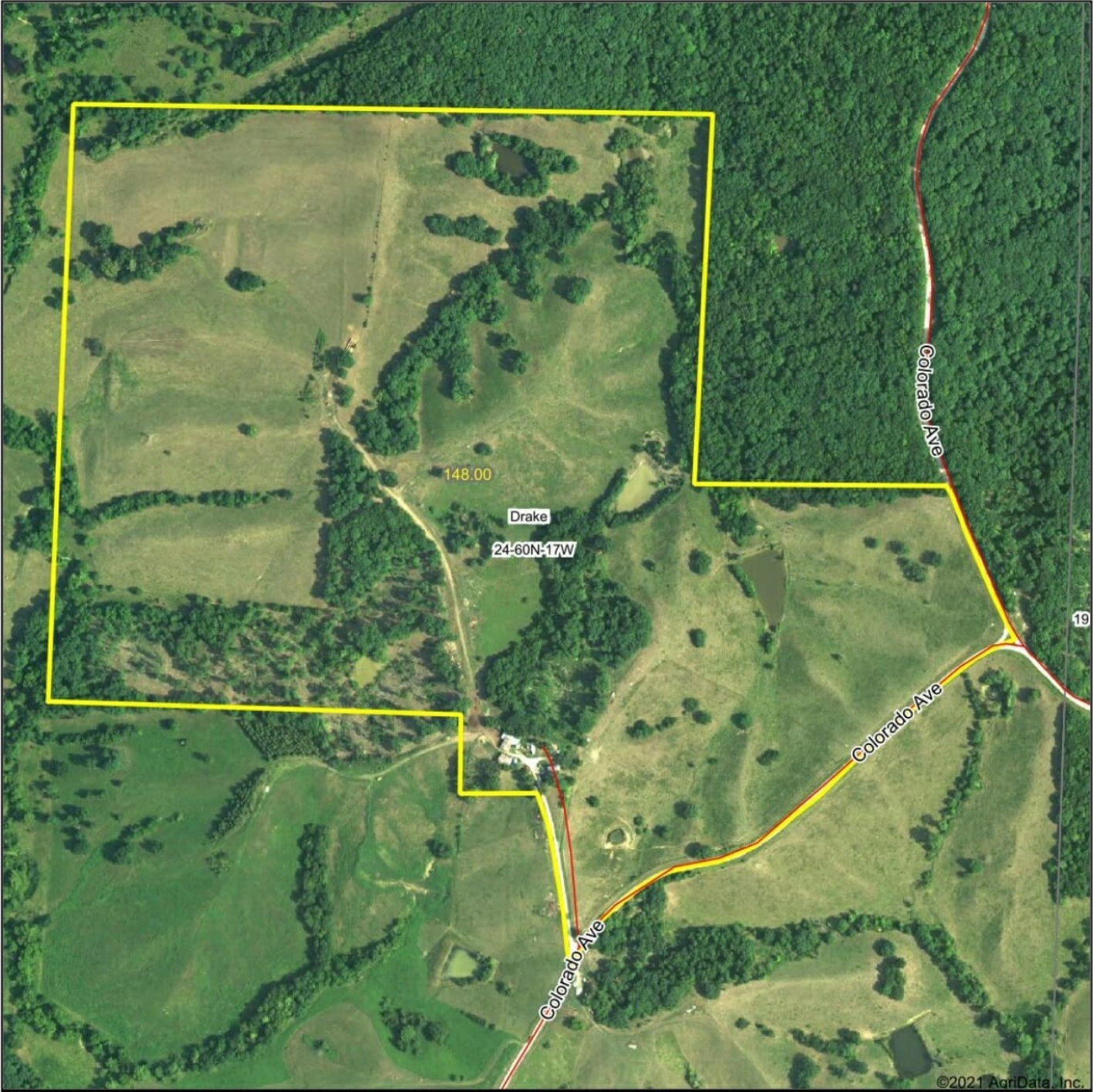
24-60N-17W  
Macon County  
Missouri



2/11/2021



TRACT 1



Map Center: 39° 59' 51.19, -92° 44' 30.89

0ft 558ft 1116ft

24-60N-17W  
Macon County  
Missouri



1/7/2021

Maps Provided By:  
 **surety**  
CUSTOMIZED ONLINE MAPPING  
© AgriData, Inc. 2020 www.AgrIDataInc.com

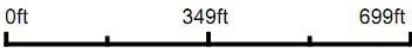


TRACT 2



©2021 AgriData, Inc.

Map Center: 39° 59' 36.23, -92° 44' 43.47



24-60N-17W  
Macon County  
Missouri



1/7/2021

Maps Provided By:  
 **surety**  
CUSTOMIZED ONLINE MAPPING  
© AgriData, Inc. 2020 [www.AgriDataInc.com](http://www.AgriDataInc.com)

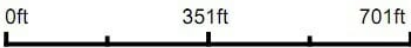


TRACT 3



©2021 AgriData, Inc.

Map Center: 39° 59' 37.08, -92° 44' 20.32



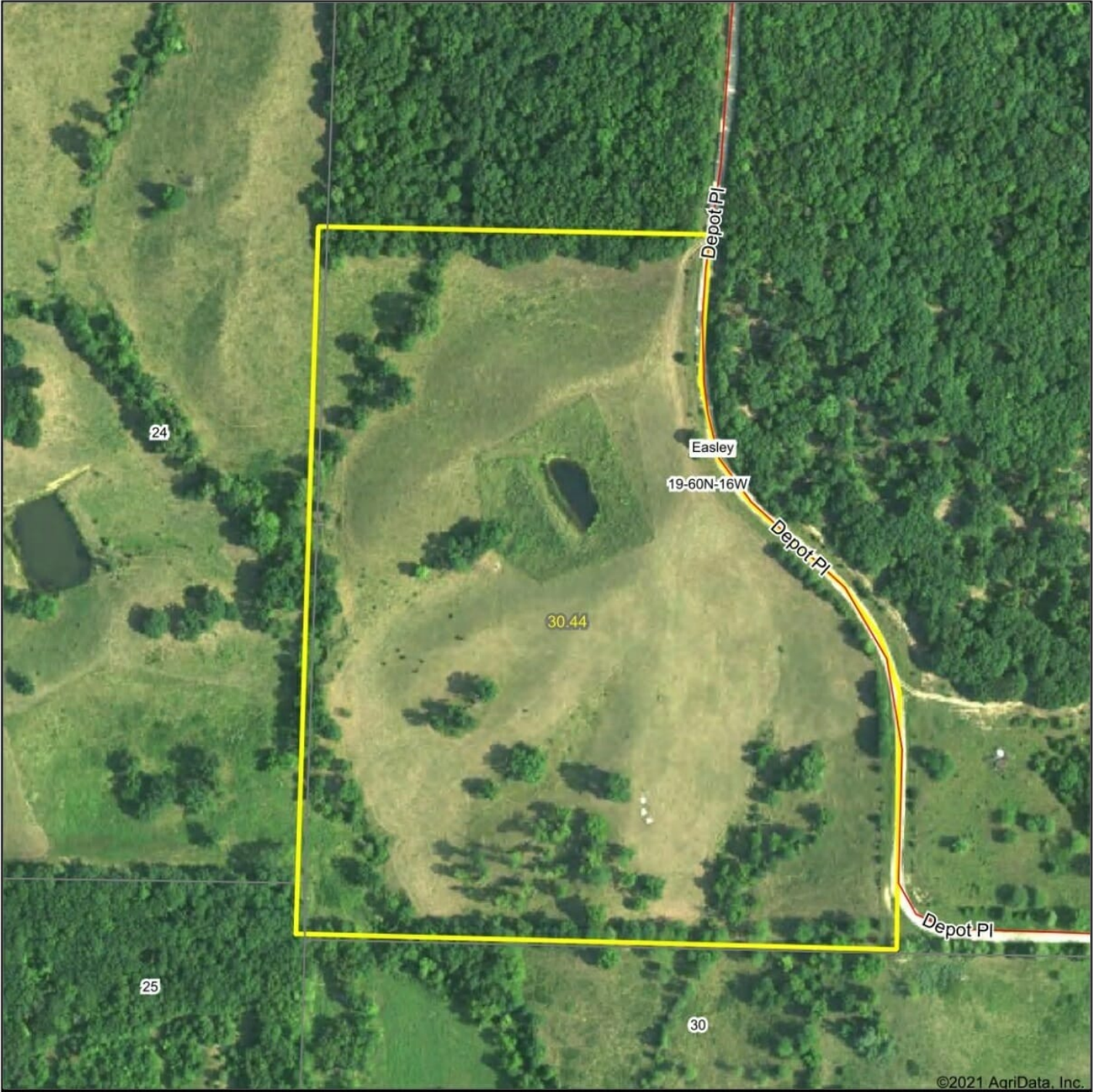
24-60N-17W  
Macon County  
Missouri

Maps Provided By:  
 **surety**  
CUSTOMIZED ONLINE MAPPING  
© AgriData, Inc. 2020 www.AgrIDataInc.com

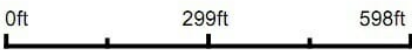




TRACT 4



Map Center: 39° 59' 33.14, -92° 44' 1.95



19-60N-16W  
Macon County  
Missouri



1/7/2021

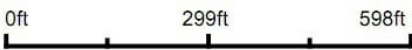
Maps Provided By:  
 **surety**  
CUSTOMIZED ONLINE MAPPING  
© AgriData, Inc. 2020 [www.AgriDataInc.com](http://www.AgriDataInc.com)



TRACT 5



Map Center: 39° 59' 21.92, -92° 44' 1.77



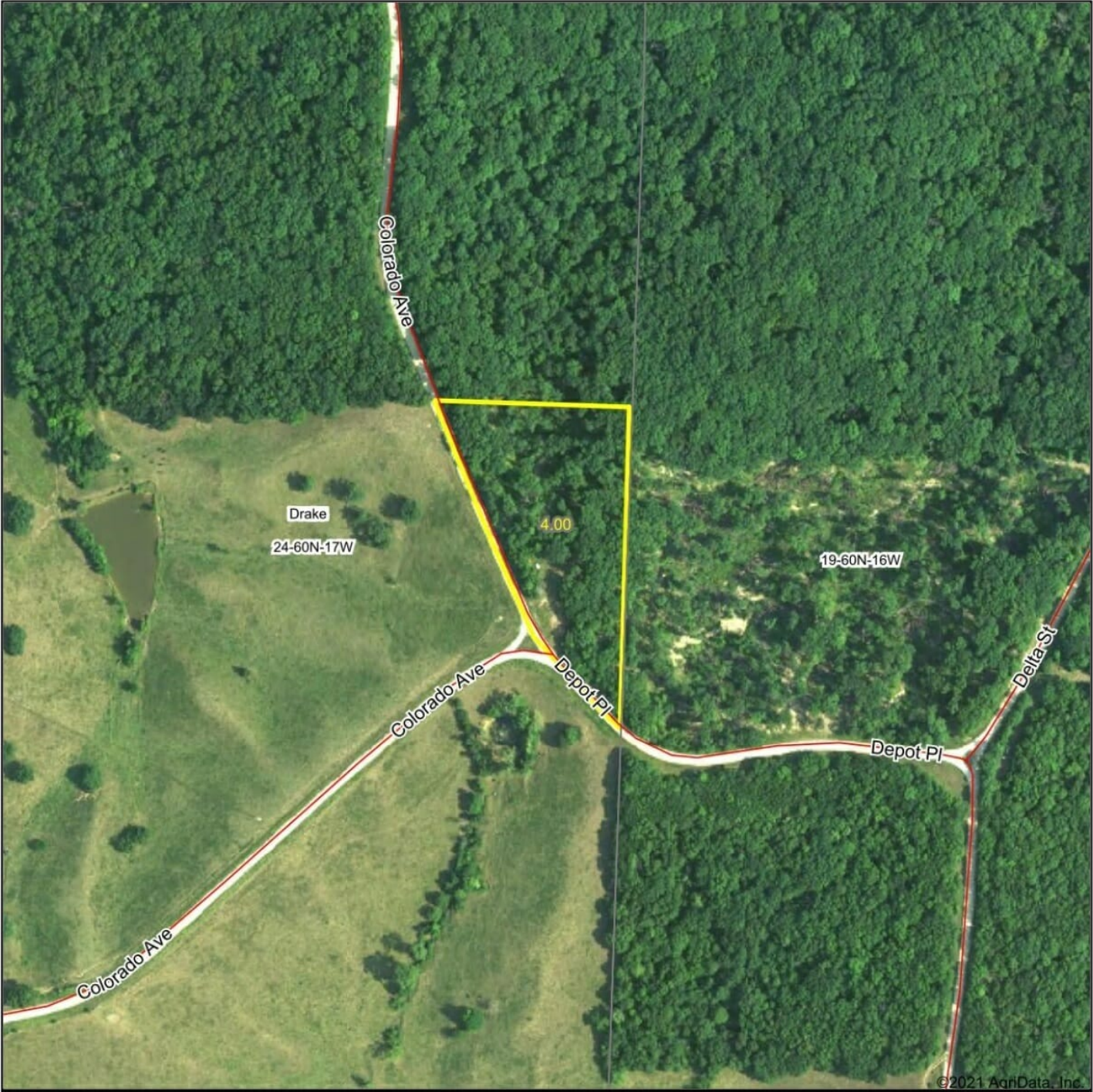
Maps Provided By:  
 **surety**  
CUSTOMIZED ONLINE MAPPING  
© AgriData, Inc. 2020 www.AgriDataInc.com

**30-60N-16W**  
**Macon County**  
**Missouri**



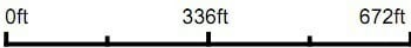


TRACT 6



©2021 AgriData, Inc.

Map Center: 39° 59' 49.89, -92° 44' 9.06



Maps Provided By:  
 **surety**  
CUSTOMIZED ONLINE MAPPING  
© AgriData, Inc. 2020 [www.AgrIDataInc.com](http://www.AgrIDataInc.com)

**24-60N-17W**  
**Macon County**  
**Missouri**





# wnship 05 R-17-W

air Co.



# Easley Townsh T-60-N R-16

Adair Co.

