



MISSOURI Land & Farm

www.missourilandandfarm.com • Office: 660-258-3185 • Fax: 660-258-2082

Hickory Grovve Rd / Powell Ave

Chariton County

\$3,000



CONTACT:



JEFFREY QUINN

Broker

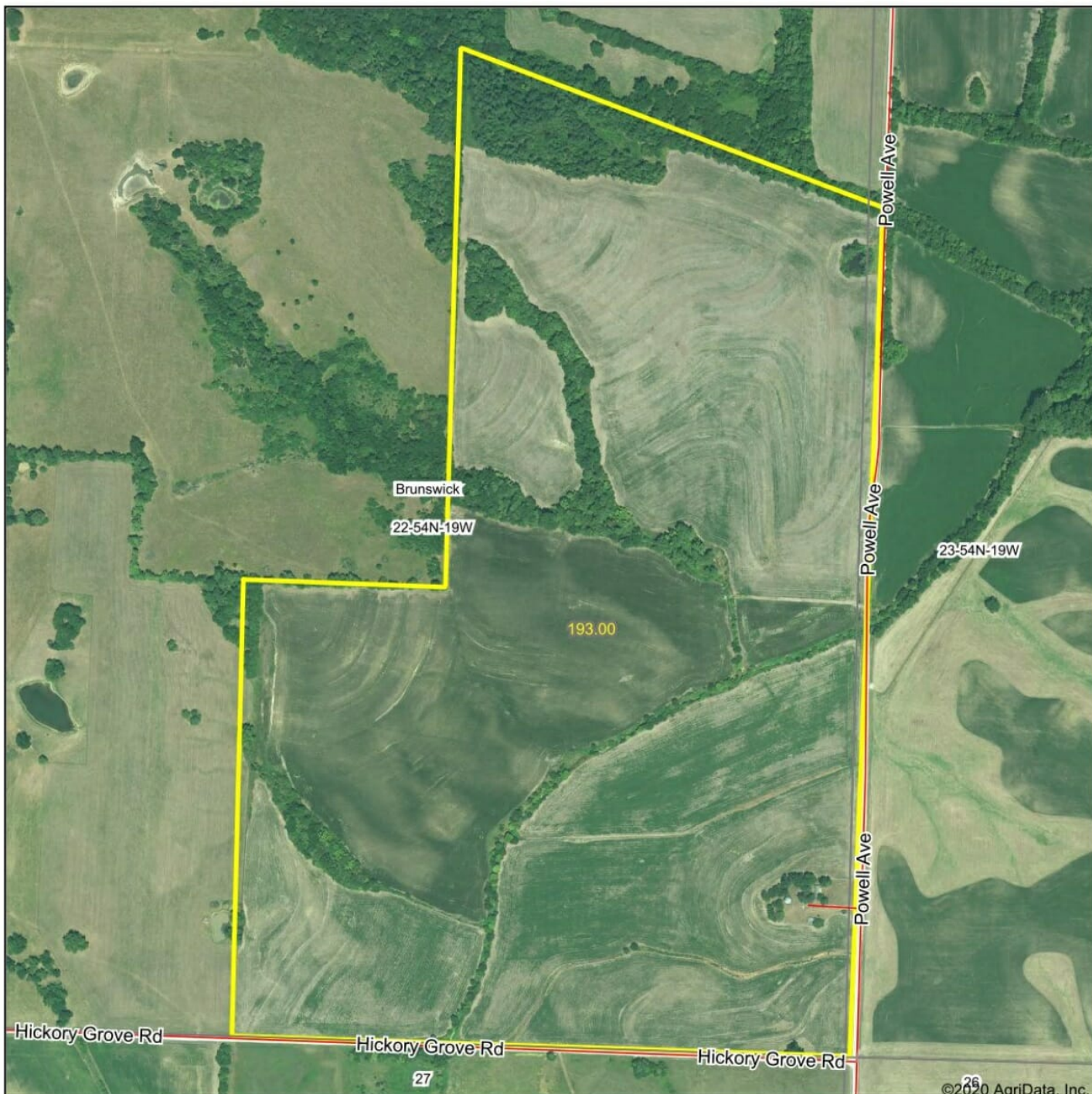
660-734-3925

jquinn@missourilandandfarm.com

193 acres located in the heart of Chariton Co. Agricultural fields with timbered draws. There is a nice spot to camp.

FA

Aerial Map



©2020 AgriData, Inc.

Map Center: 39° 28' 19.23, -93° 1' 20.55



22-54N-19W
Chariton County
Missouri

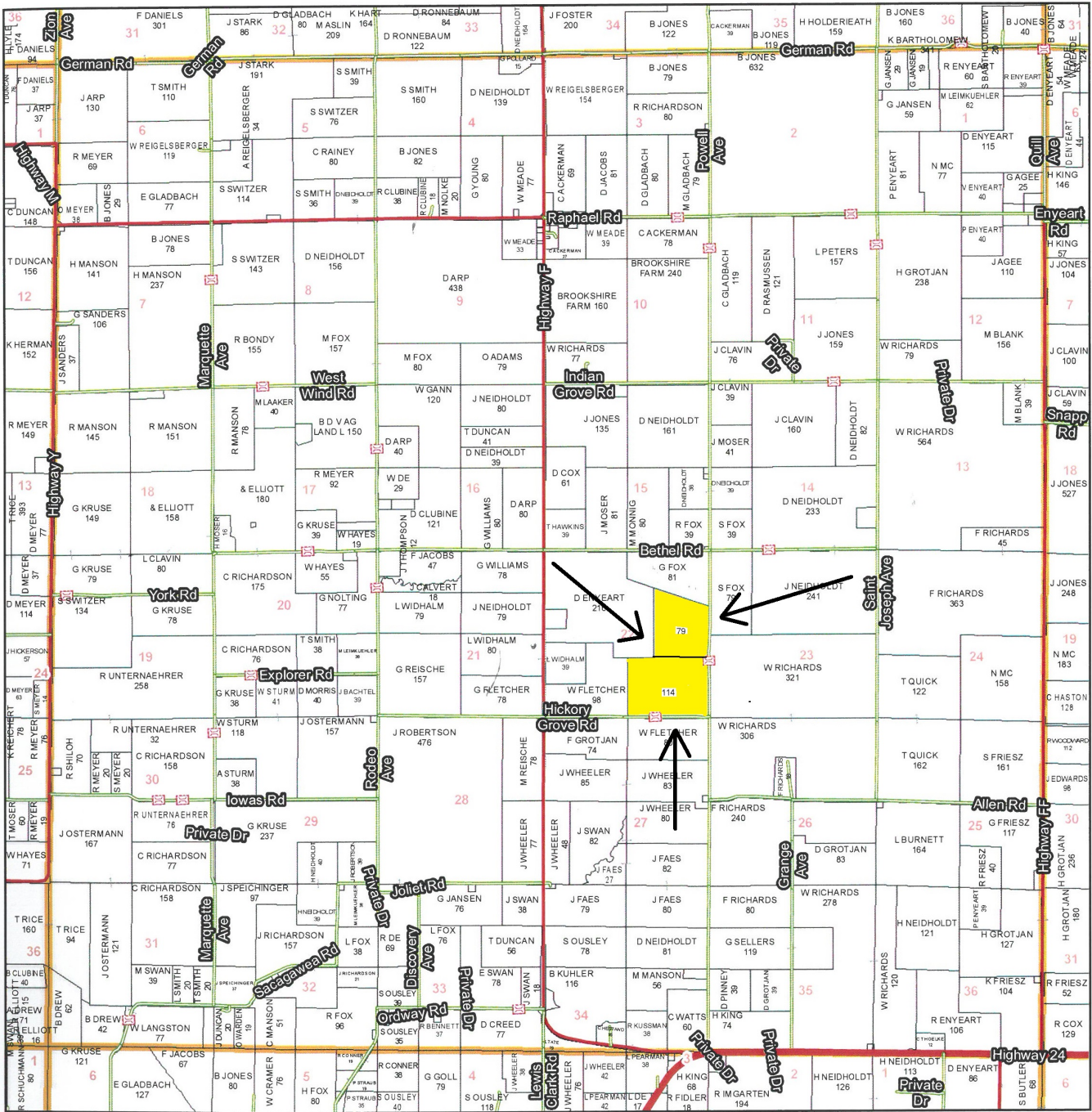


9/21/2020

Maps Provided By:
 **surety**
CUSTOMIZED ONLINE MAPPING
© AgriData, Inc. 2020 www.AgriDataInc.com

T54N - R19W

See Page 27



See Page 37

See Page 41

See Page 51

Chariton County Commission
 Tony McCollum - Presiding Commissioner
 Danny Price - Western District Commissioner
 Steve Atkinson - Eastern District Commissioner

Data Courtesy Chariton County
 Geographic Information System
 Darrin Gladbach - Assessor

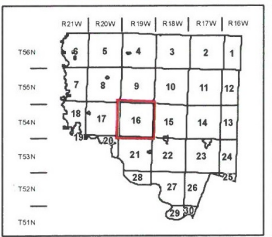
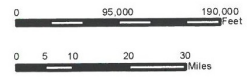
This data was primarily developed for tax purposes and is not considered survey accurate.

Most parcels > 10 ac labeled

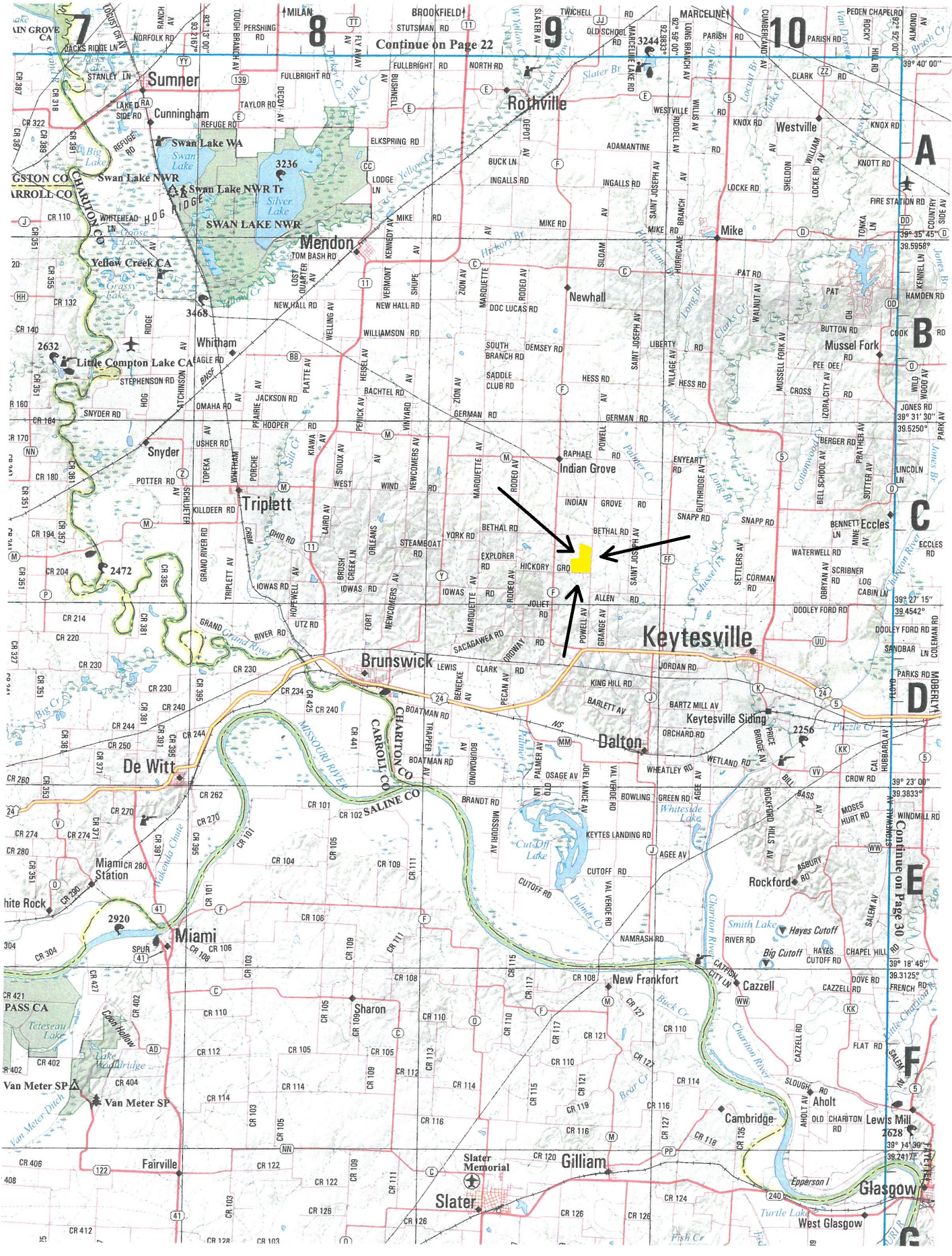
GIS & Map Development By:

 www.midlandgis.com

© Copyright Chanton County, MO



Legend	
	City Limits
	Township-Range
	Sections
	Land Grant
	Political Township
	Land Ownership
	Subdivisions
	Conservation & US
	US Highways
	ST Highways
	CO Highways
	Streets
	Rail Roads
	Streams
	Land Hooks
	Bridges



Continue on Page 22

Continue on Page 30

Sumner

Rothville

Westville

Mendon

Newhall

Mike

Whitham

Indian Grove

Raphael

Snyder

Triplet

Keytesville

Brunswick

Dalton

De Witt

Miami

Rockford

New Frankfort

Cazzell

Van Meter

Sharon

Gilliam

Cambridge

Fairville

Slater

Glasgow

7

8

9

10

A

B

C

D

E

F

G

