



# MISSOURI Land & Farm

[www.missourilandandfarm.com](http://www.missourilandandfarm.com) • Office: 660-258-3185 • Fax: 660-258-2082

## 60 Acre Harrison Co. Tillable Farm

Harrison County

**\$359,700**



## CONTACT:



## JERRY CRUTCHFIELD

Sales

660-670-1249

[jerrydc@cvalley.net](mailto:jerrydc@cvalley.net)

## CONTACT:



## DAVE ATKINSON

Sales & Auctioneer

660-788-3333

[datkinson@missourilandandfarm.com](mailto:datkinson@missourilandandfarm.com)



For Sale: 60 acres m/l Harrison Co Farmland with 57.11 FSA crop acres. Nice smaller tract to add to your current acres or begin your real estate investment portfolio. The Farm is mostly tillage with wooded draws. The farm has good access off of county road East 237th. Currently cash rented for the 2024 farming season. The Farm is located 15 miles East of Ridgeway Mo on East 237 Street. Call or Text Jerry Crutchfield at 660-670-1249 or Dave Atkinson 660-788-3333 for more information

# Aerial Map



©2024 AgriData, Inc.

Boundary Center: 40° 22' 22.84, -93° 49' 8.52

0ft 423ft 846ft

**3-64N-26W**  
**Harrison County**  
**Missouri**



2/28/2024

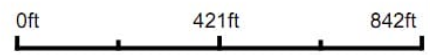
Maps Provided By:  
 **surety**  
CUSTOMIZED ONLINE MAPPING  
© AgriData, Inc. 2023 www.AgriDataInc.com

# Aerial Map



©2024 AgriData, Inc.

Boundary Center: 40° 22' 22.91, -93° 49' 8.36



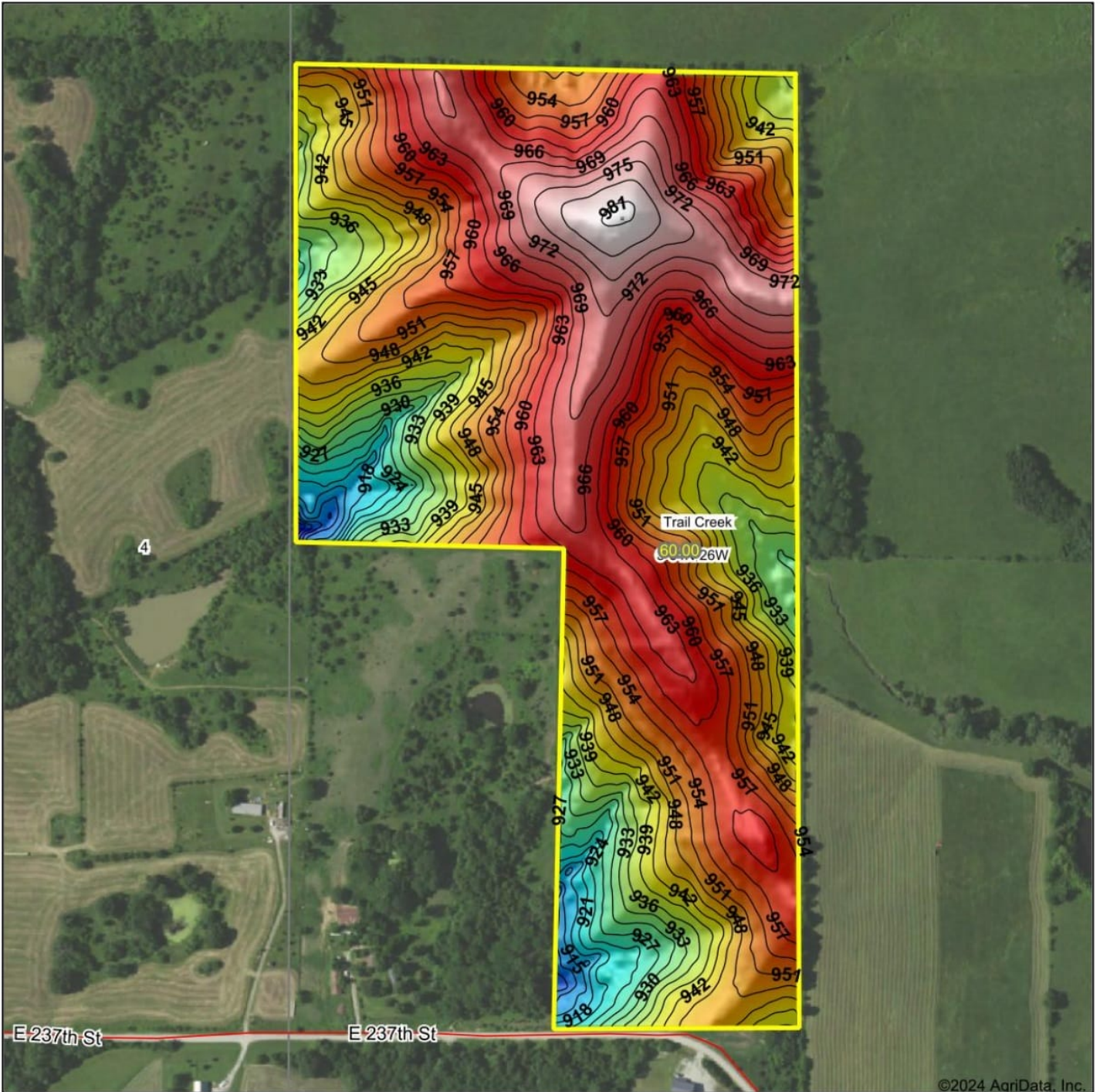
**3-64N-26W**  
**Harrison County**  
**Missouri**



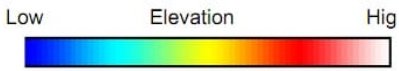
1/12/2024

Maps Provided By:  
  
 CUSTOMIZED ONLINE MAPPING  
 © AgriData, Inc. 2023 www.AgriDataInc.com

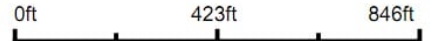
# Topography Hillshade



©2024 AgriData, Inc.



Source: USGS 3 meter dem  
 Interval(ft): 3  
 Min: 900.5  
 Max: 981.4  
 Range: 80.9  
 Average: 951.1  
 Standard Deviation: 14.53 ft

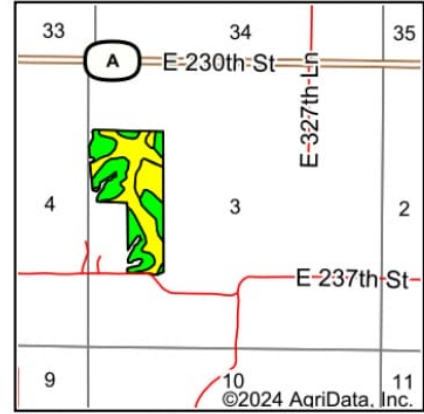
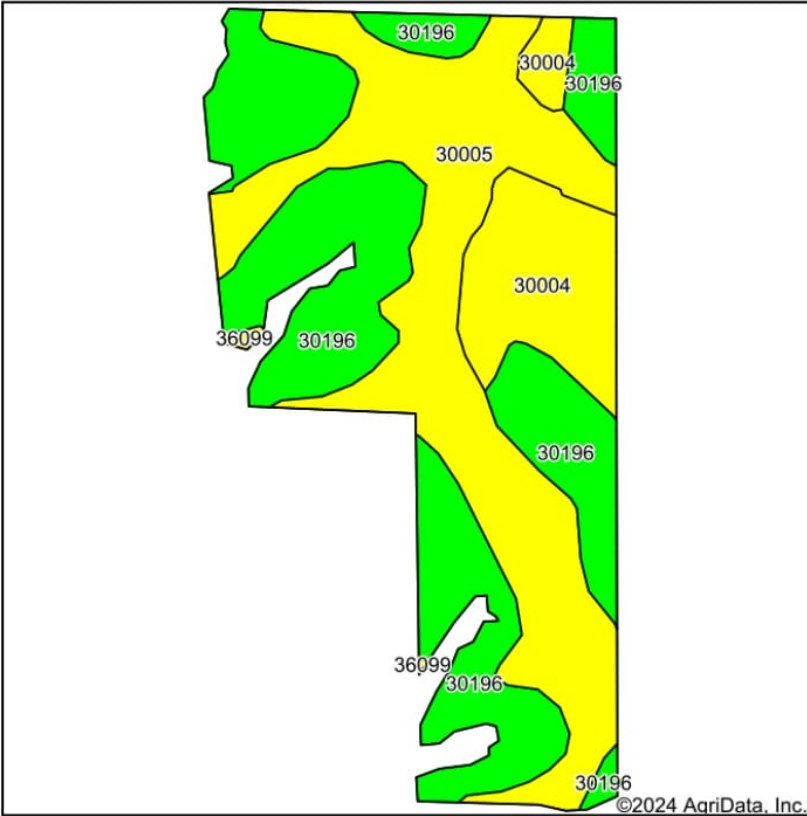


**3-64N-26W**  
**Harrison County**  
**Missouri**

Boundary Center: 40° 22' 22.96, -93° 49' 8.49



# Soils Map



State: **Missouri**  
 County: **Harrison**  
 Location: **3-64N-26W**  
 Township: **Trail Creek**  
 Acres: **57.11**  
 Date: **2/28/2024**



Soils data provided by USDA and NRCS.

Area Symbol: MO081, Soil Area Version: 27

Code	Soil Description	Acres	Percent of field	Non-Irr Class Legend	Non-Irr Class *c	Alfalfa hay Tons	Caucasian bluestem Tons	Common bermudagrass Tons	Orchardgrass red clover Tons	Tall fescue Tons	Warm season grasses Tons	*n NCCPI Soybeans
30196	Shelby clay loam, 9 to 14 percent slopes, severely eroded	25.98	45.5%		IVe							46
30005	Adair loam, 3 to 9 percent slopes	23.21	40.6%		IIle	4	7	6	7	6	7	62
30004	Adair clay loam, heavy till, 5 to 9 percent slopes, moderately eroded	7.76	13.6%		IIle							46
36099	Zook-Colo silty clay loams, 1 to 3 percent slopes, frequently flooded	0.16	0.3%		IIIw			8	7	8	9	57
<b>Weighted Average</b>						<b>3.45</b>	<b>1.6</b>	<b>2.8</b>	<b>2.5</b>	<b>2.9</b>	<b>2.5</b>	<b>*n 52.5</b>

\*n: The aggregation method is "Weighted Average using all components"  
 \*c: Using Capabilities Class Dominant Condition Aggregation Method

Soils data provided by USDA and NRCS.

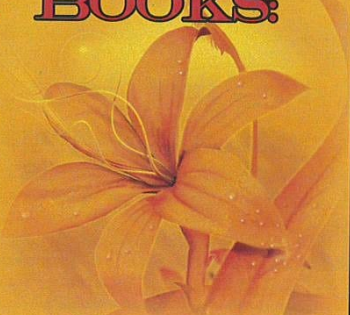
# NEED ADDITIONAL PLAT BOOKS:

Harrison County Soil  
and Water Conservation District

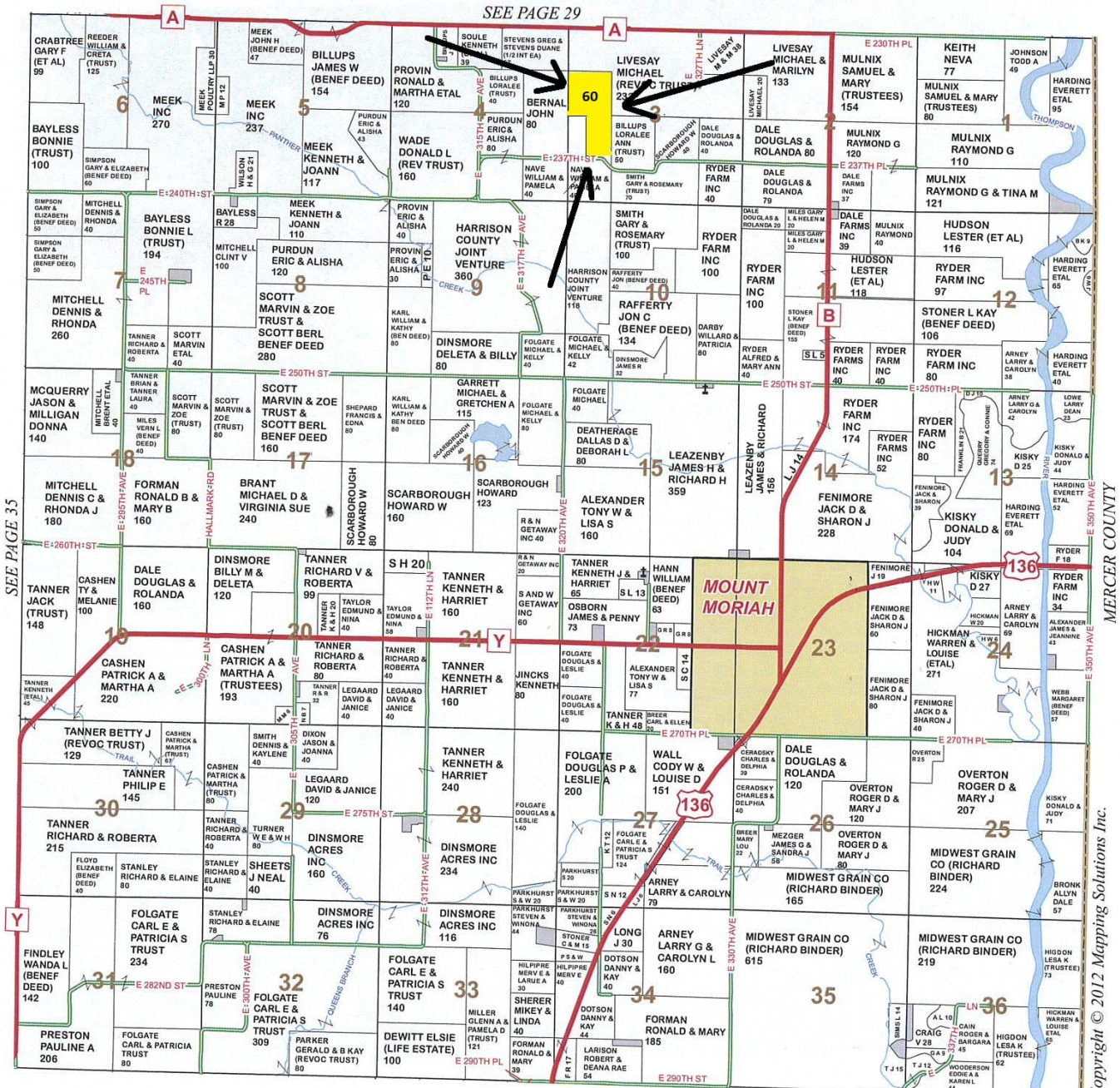
1400 N 41st Street

Bethany, Missouri 64424

660-425-7655 ext. 3



## TOWNSHIP 64N • RANGE 26W TRAIL CREEK TWP



SEE PAGE 45

Copyright © 2012 Mapping Solutions Inc.