



MISSOURI Land & Farm

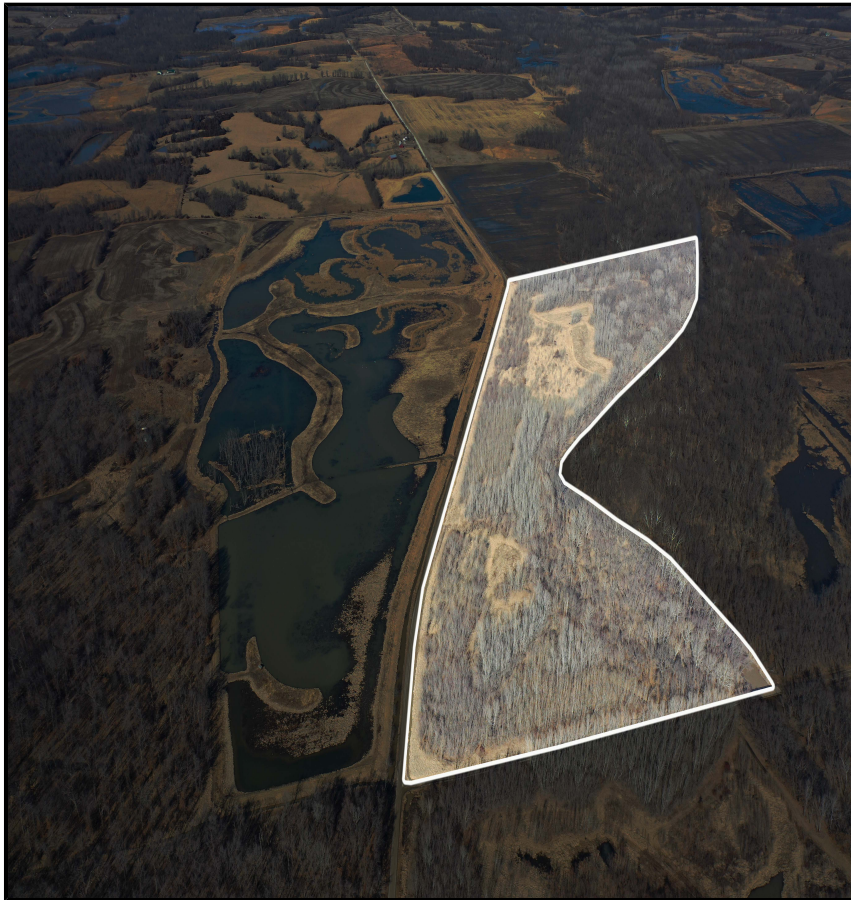
www.missourilandandfarm.com • Office: 660-258-3185 • Fax: 660-258-2082

62 Acres M/L Hunting Land

John Roth Rd

Chariton

\$220,000



CONTACT:



TAMMY AMER

Sales

660-734-2029

tamer@missourilandandfarm.com



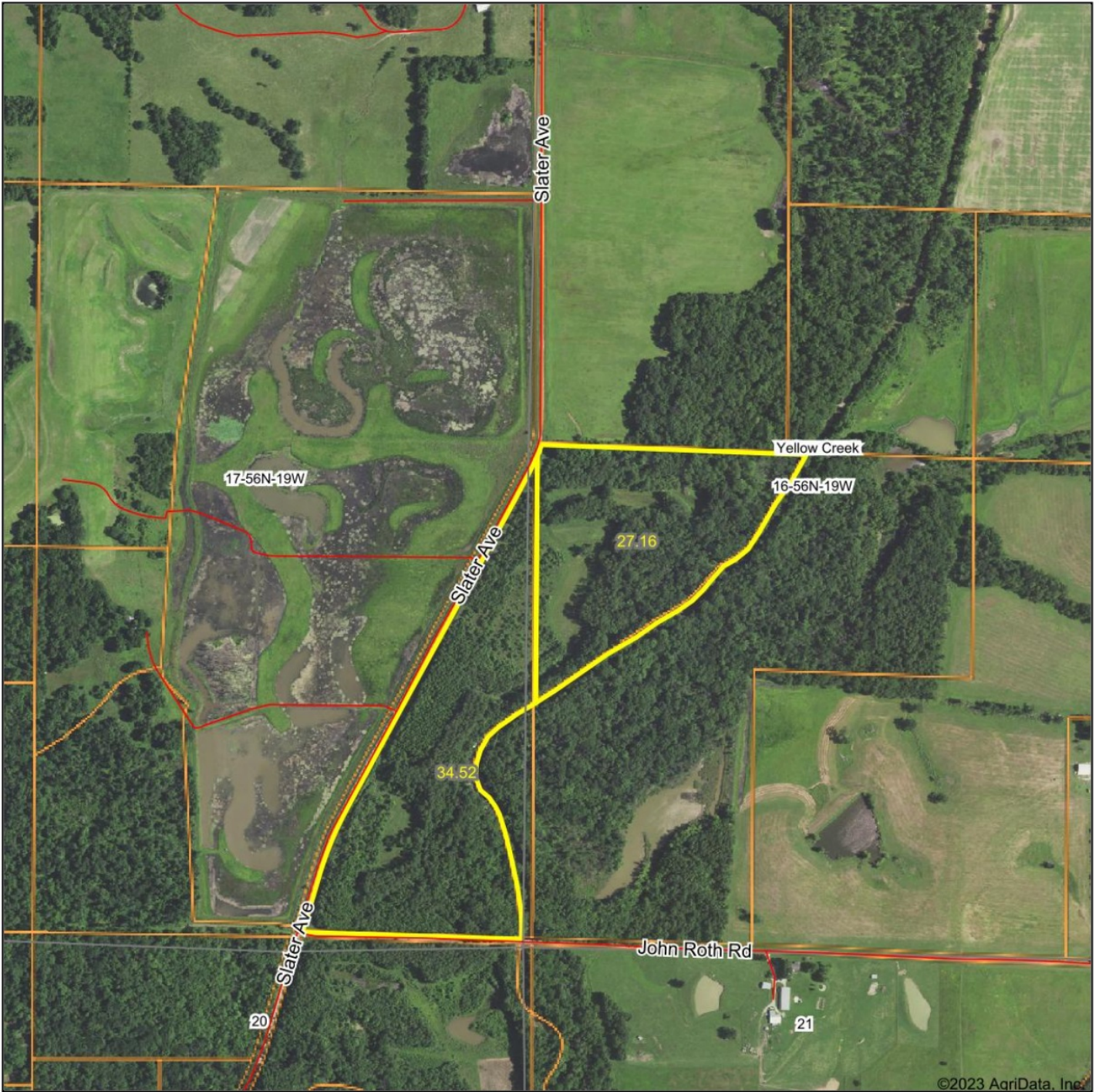
SOLD This 62 acre recreational property in Chariton County is an opportunity to purchase a tract with diverse hunting opportunities. The acreage is enrolled in WRP, and provides thick cover and bedding for deer. The farm's position along the creek offers a great travel corridor as well.

Located 5.5 miles East, Northeast of Swan Lake National Wildlife Refuge and neighbored by waterfowl habitat, the farm offers interesting development potential.

For more information, Contact Tammy Amer with Missouri Land & Farm!

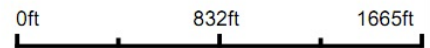
Taxes: 108

Aerial Map



©2023 AgriData, Inc.

Map Center: 39° 39' 58.74, -93° 2' 47.58



16-56N-19W
Chariton County
Missouri



2/12/2023