



MISSOURI Land & Farm

www.missourilandandfarm.com • Office: 660-258-3185 • Fax: 660-258-2082

65 Acre Grand River Hunting Sanctuary!!

Bedford MO, 64643

Livingston County

\$191,500



CONTACT:



JEFFREY QUINN

Broker

660-734-3925

jquinn@missourilandandfarm.com

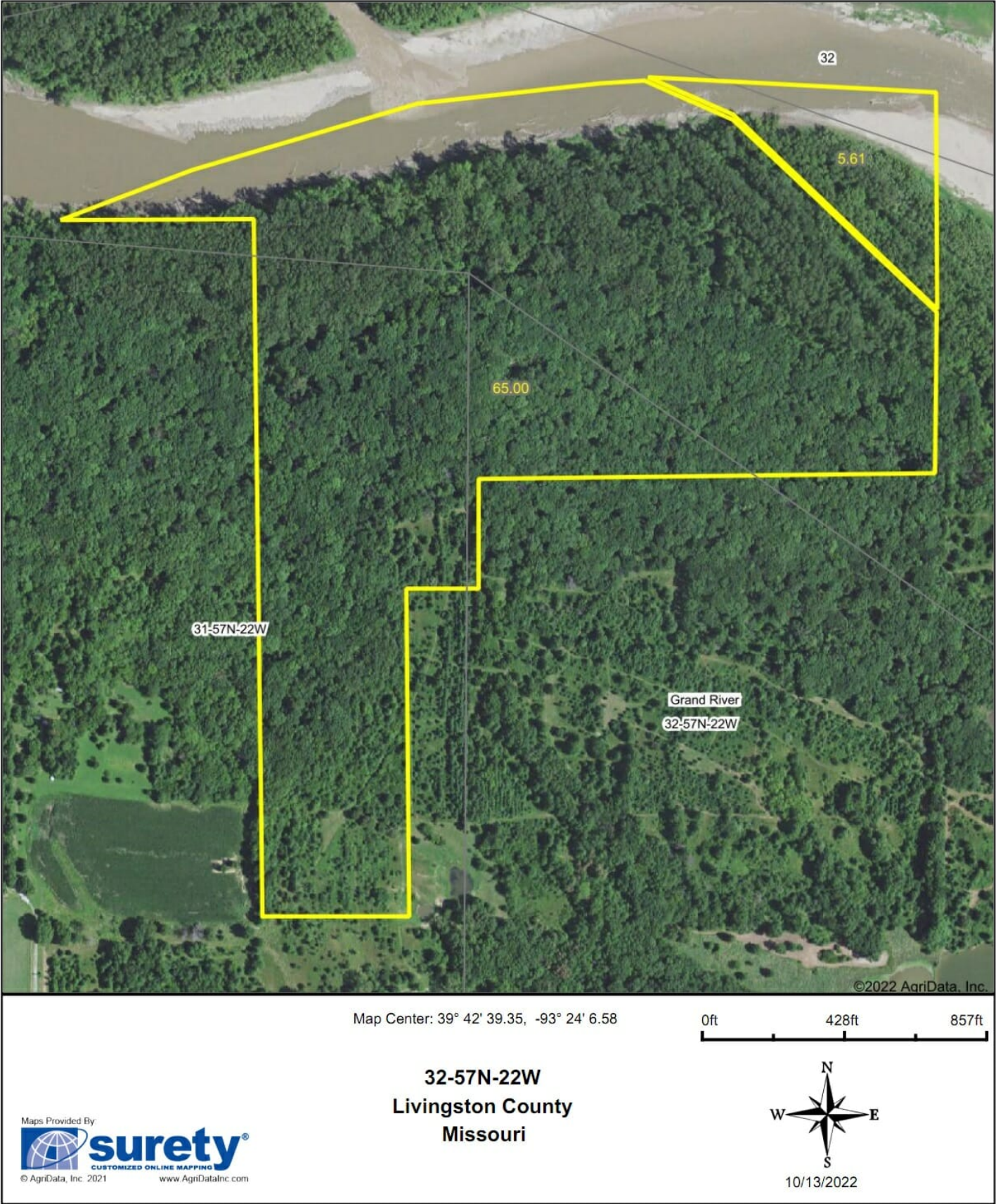
Its not every day you can find a secluded timber tract in Livingston County along the Grand River. From Co Road 304 a minimum traveled road leads to an easement that in turn leads to this nice hunting tract. The seclusion this tract offers with no road frontage provides for some low pressure hunting and ensures this property will offer hunting comparable to a larger tract. The Grand River frontage offers a great travel corridor. There is currently a trail that winds through the property to the river providing some great camping, and fishing spots. It may even offer some waterfowl hunting at times. The possibilities are endless.

This property is blank canvas that has seen minimal pressure for quite some time. With the right set up this property should provide some great Whitetail and Turkey hunting. This is a couple farms put together as one. While I liked it as a 33 acre property, I'm way more excited about it as a 65 acre property. More area, more possibilities, stand locations, etc. This farm is in the right area!!

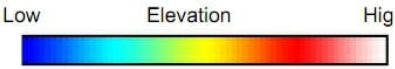
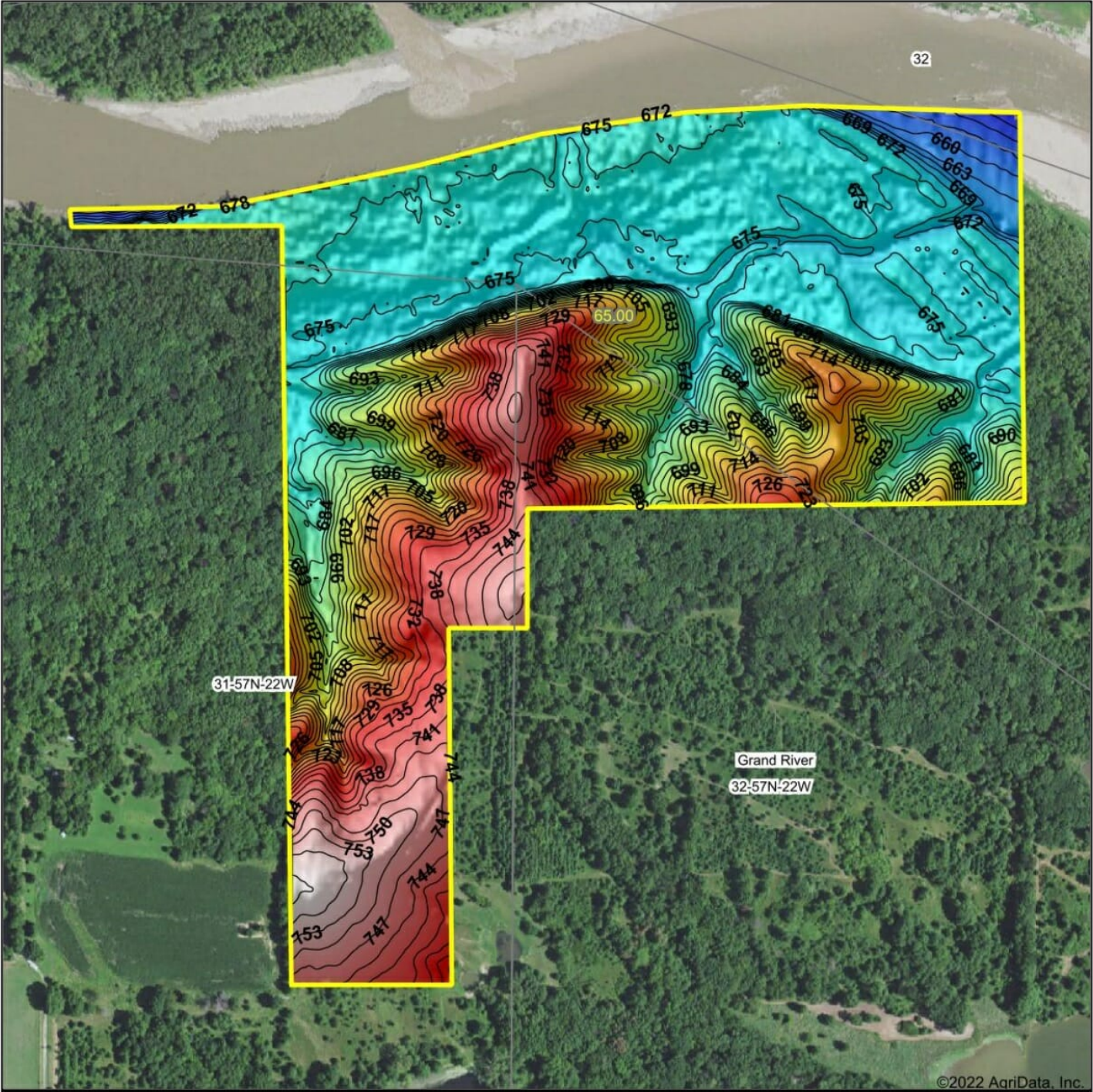
For more information call or text Jeff Quinn today 660-734-3925

More Pics coming soon.

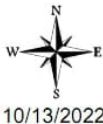
Aerial Map



Topography Hillshade



Source: USGS 3 meter dem
Interval(ft): 3
Min: 647.8
Max: 760.0
Range: 112.2
Average: 698.5
Standard Deviation: 26.9 ft



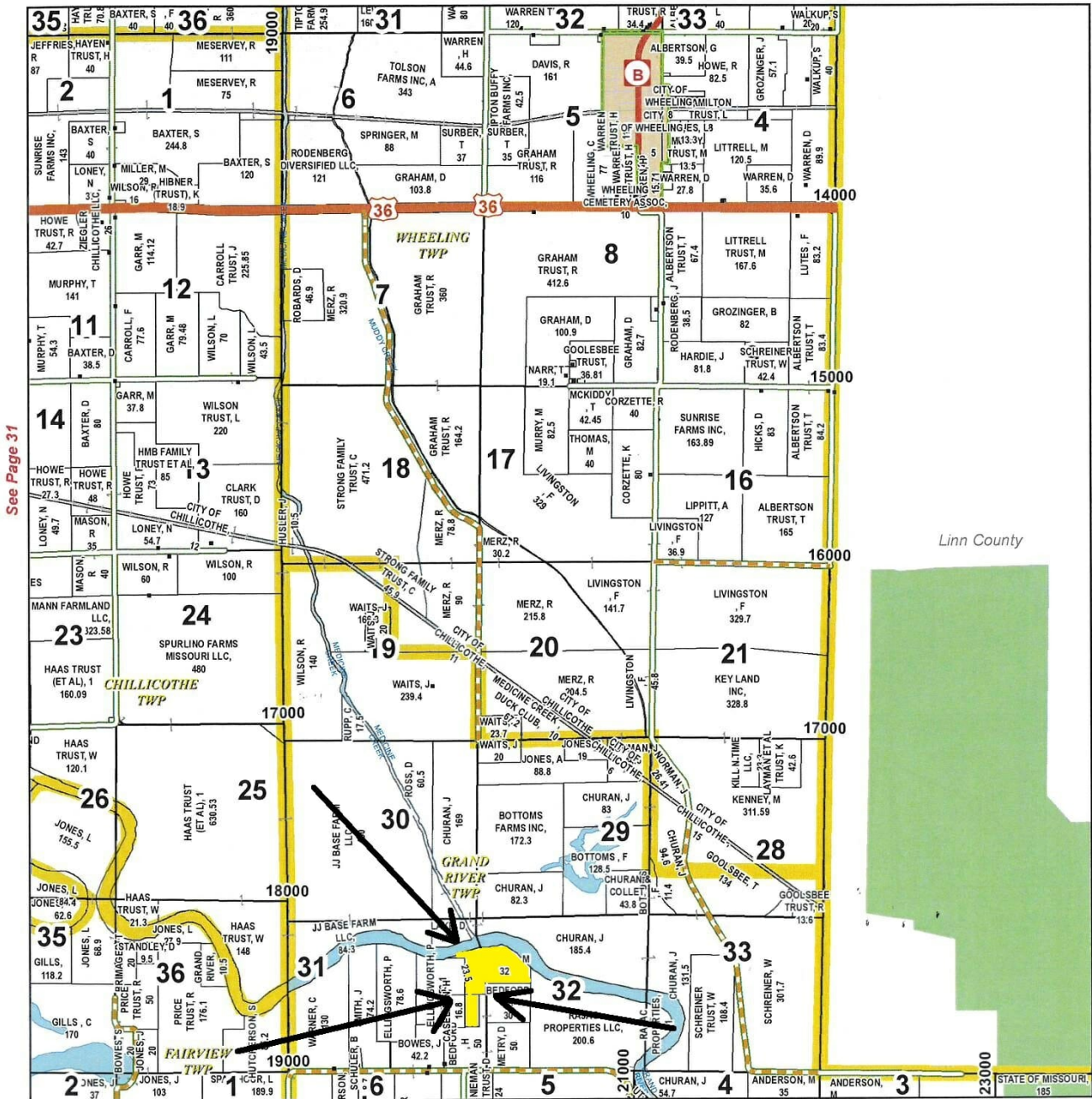
32-57N-22W
Livingston County
Missouri

map center:39° 42' 38.29, -93° 24' 6.33

TOWNSHIP 57N - RANGE 22W

See Page 25

South Part WHEELING TWP



Linn County

See Page 31

North Part GRAND RIVER TWP

See Page 41

