



# MISSOURI Land & Farm

www.missourilandandfarm.com • Office: 660-258-3185 • Fax: 660-258-2082

## 66 Acres Hunting/CRP Property!!

Lyman Road, Bucklin, MO 64631

Linn Co.

**\$297,000**



### CONTACT:



**JEFFREY QUINN**

Broker

660-734-3925

jquinn@missourilandandfarm.com

This 66 acre farm offers a great place to build, hunt, or just enjoy a recreational getaway.

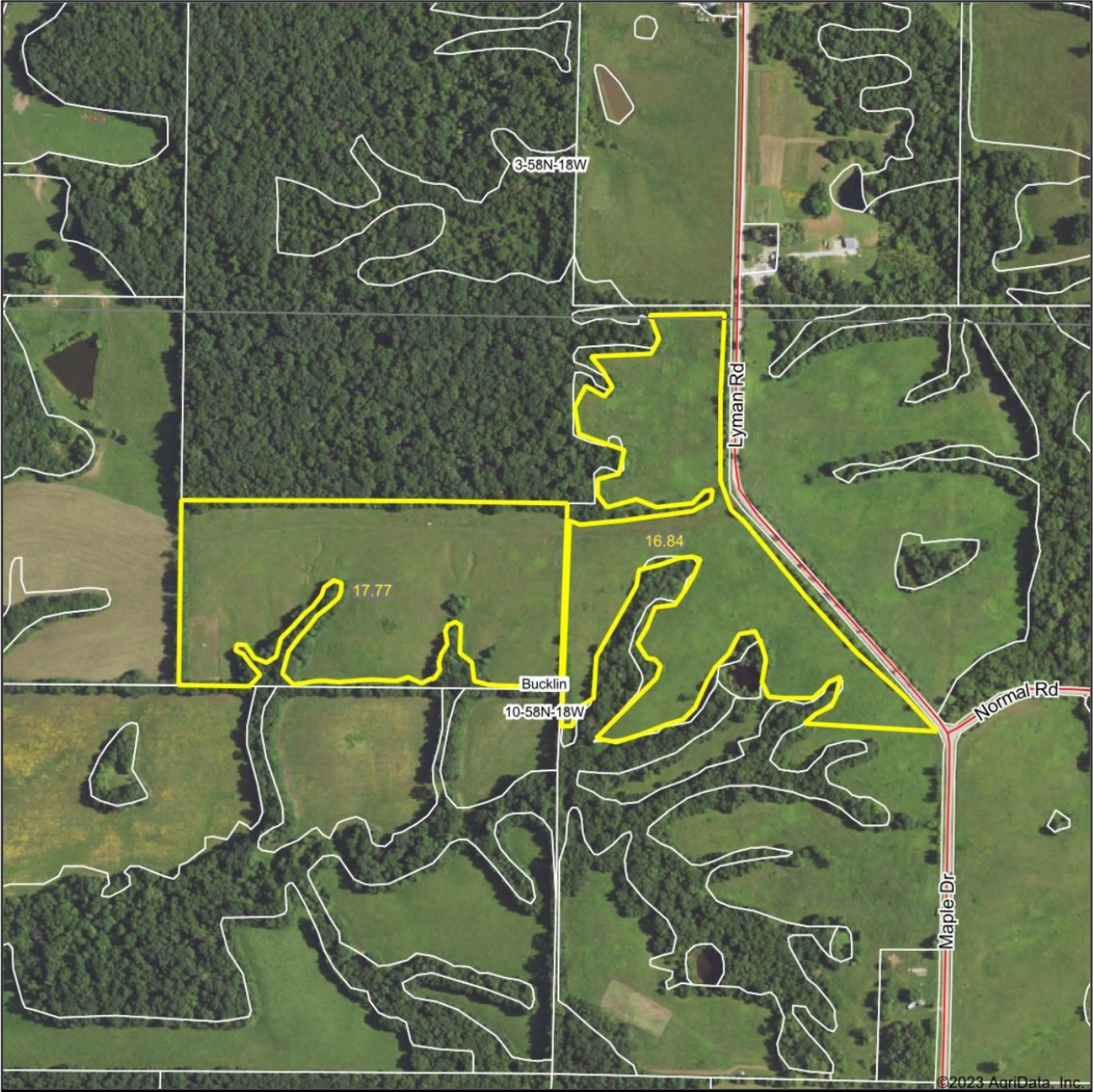
The timber and layout on the farm offers a couple great tower blinds stand locations along with ladder stands for whitetail deer hunting. There should also be opportunity for turkeys and small game on the property as well. The layout provides easy access to whichever wind or direction you decide to hunt from.

The farm also features approximately 33 acres of CRP.

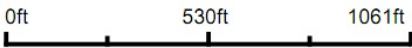
For more information call or text Jeff Quinn 660-734-3925



Aerial Map



Map Center: 39° 51' 35.17, -92° 54' 4.84



10-58N-18W  
Linn County  
Missouri

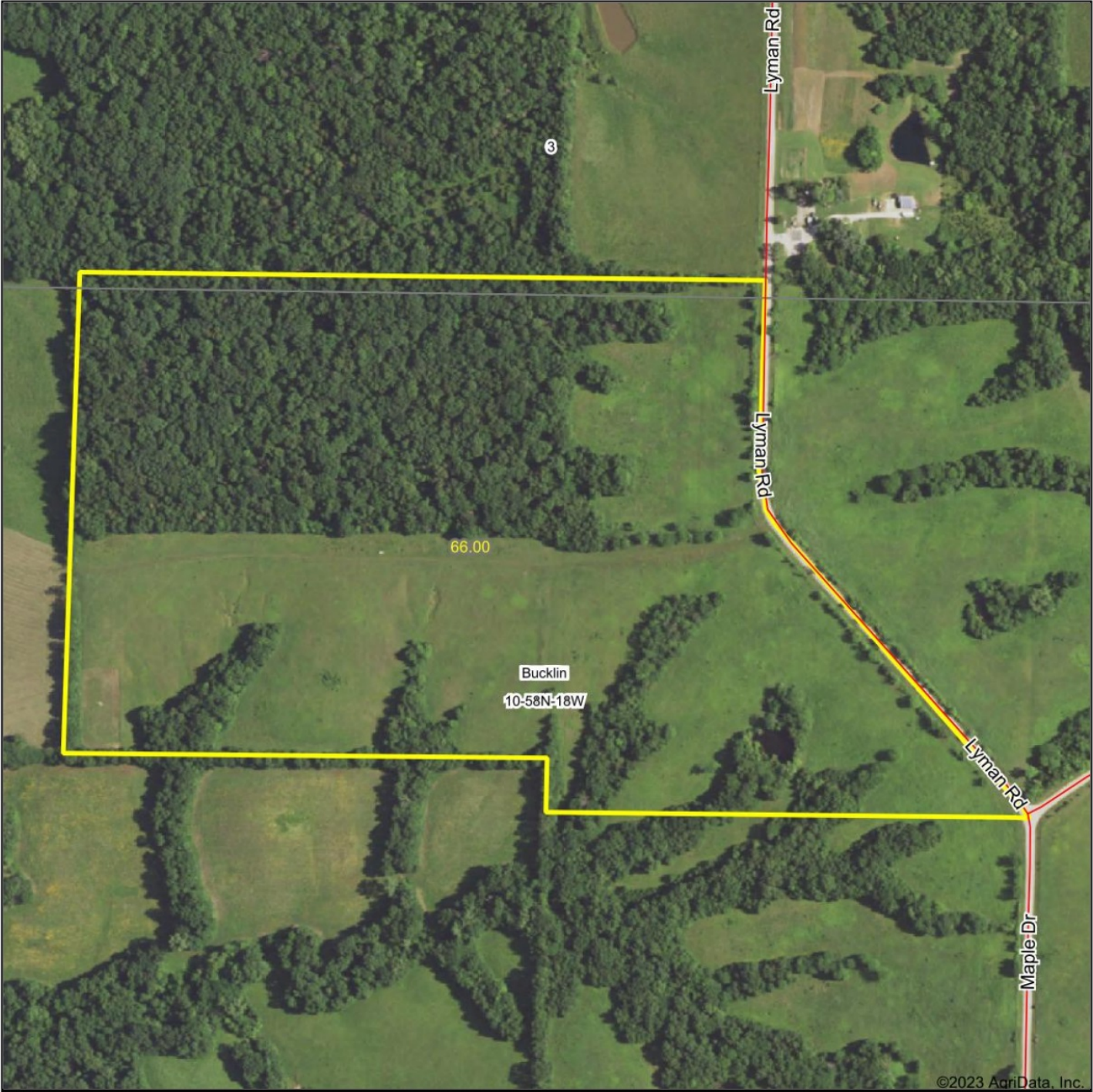


Maps Provided By:  
 **surety**  
CUSTOMIZED ONLINE MAPPING  
© AgriData, Inc. 2021    www.AgriDataInc.com

Field borders provided by Farm Service Agency as of 5/21/2008.

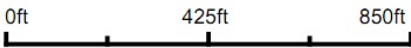


Aerial Map



©2023 AgriData, Inc.

Map Center: 39° 51' 36.1, -92° 54' 4.17

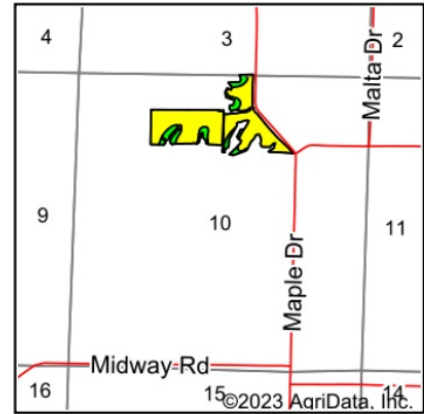
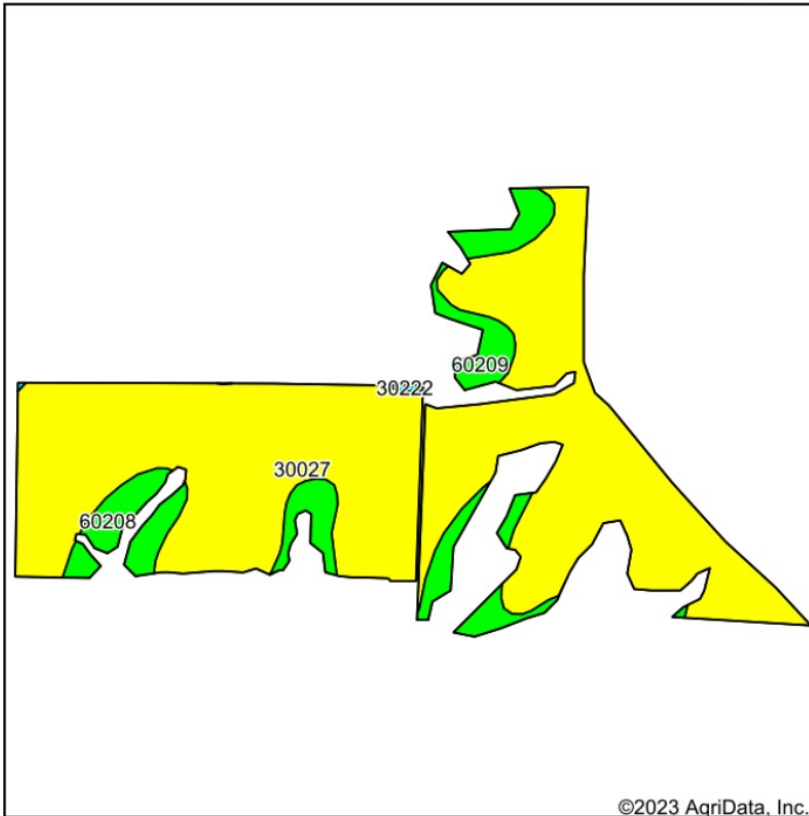


10-58N-18W  
Linn County  
Missouri



2/9/2023

# Soils Map



State: **Missouri**  
 County: **Linn**  
 Location: **10-58N-18W**  
 Township: **Bucklin**  
 Acres: **34.61**  
 Date: **2/9/2023**

Maps Provided By  
  
 CUSTOMIZED ONLINE MAPPING  
 © AgriData, Inc. 2021 www.AgriDataInc.com



Soils data provided by USDA and NRCS.

Area Symbol: MO115, Soil Area Version: 26												
Code	Soil Description	Acres	Percent of field	Non-Irr Class Legend	Non-Irr Class *c	Alfalfa hay Tons	Caucasian bluestem Tons	Common bermudagrass Tons	Orchardgrass red clover Tons	Tall fescue Tons	Warm season grasses Tons	*n NCCPI Soybeans
30027	Armstrong clay loam, 5 to 9 percent slopes, moderately eroded	29.51	85.3%		IIIe							42
60208	Purdin clay loam, 9 to 14 percent slopes, severely eroded	3.45	10.0%		IVe	5	8	7	8	7	8	46
60209	Purdin loam, 9 to 14 percent slopes, eroded	1.65	4.8%		IVe	5	7	6	7	6	7	51
Weighted Average					3.15	0.7	1.1	1	1.1	1	1.1	*n 42.8

\*n: The aggregation method is "Weighted Average using all components"

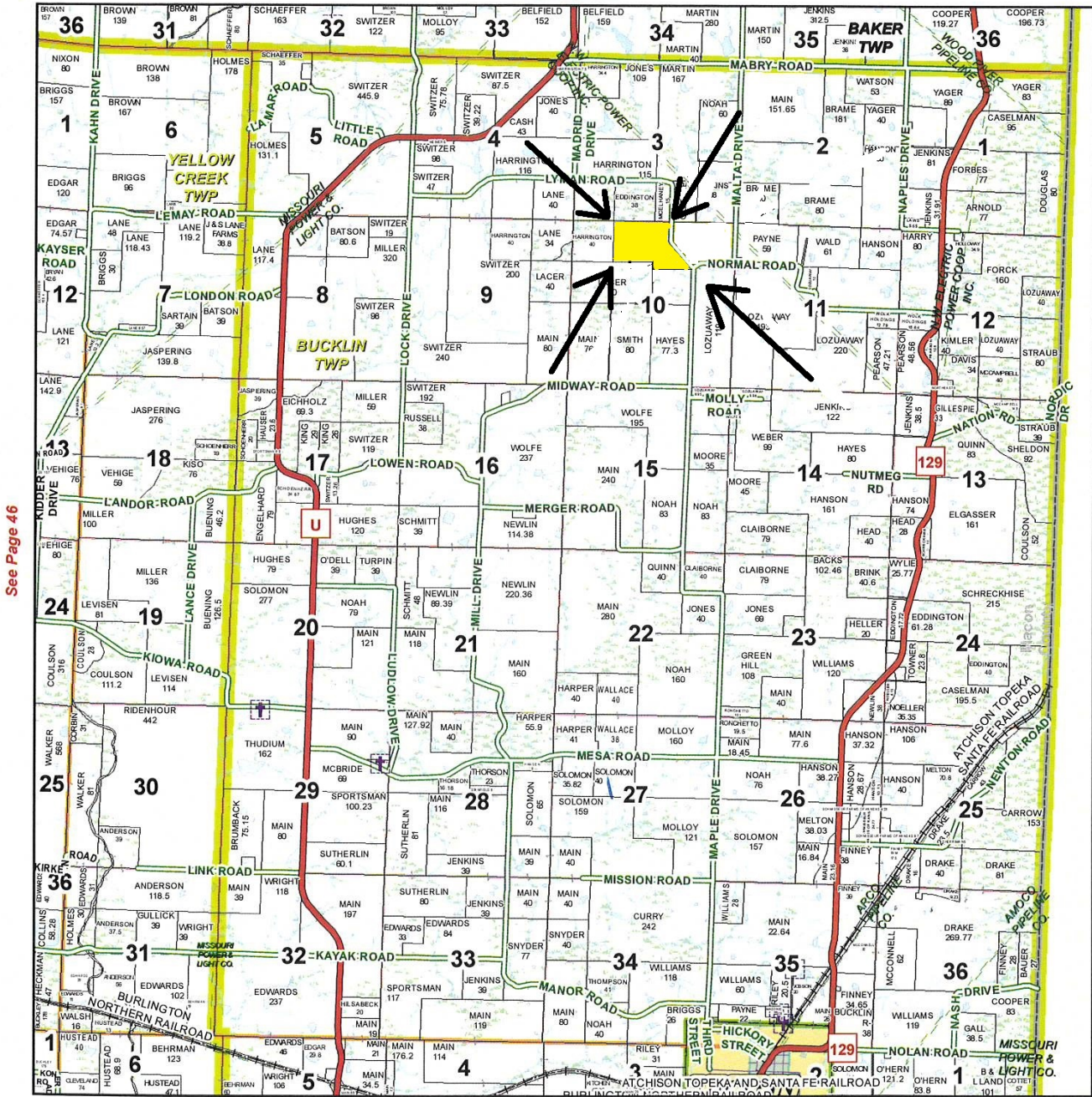
\*c: Using Capabilities Class Dominant Condition Aggregation Method

Soils data provided by USDA and NRCS.



# T58N-R18W

See Page 38



See Page 58

January 18, 2017

Linn County Commission

Dick King - Presiding Commissioner  
Mike Brown - 1st District Commissioner  
Josh Muck - 2nd District Commissioner

Data Courtesy Linn County  
Geographic Information System

Marlene Graves - Assessor / GIS Manager

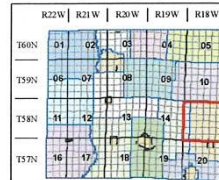
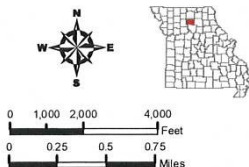
This data was primarily developed  
for tax purposes and is not  
considered survey accurate.

Most parcels > 5 ac labeled

GIS & Map Development By:



www.midlandgis.com



## Legend

- County Boundary
- City Limits
- Township-Range
- Sections
- Political Township
- Land Ownership
- Subdivisions
- US Highways
- ST Highways
- CO Highways
- Streets
- Rail Roads
- Streams
- Water
- Land Hooks
- Bridges
- Cemeteries