



MISSOURI Land & Farm

www.missourilandandfarm.com • Office: 660-258-3185 • Fax: 660-258-2082

66 Acres Linn County

Linn

\$335,000



CONTACT:



BRIAN DAVIS

Sales

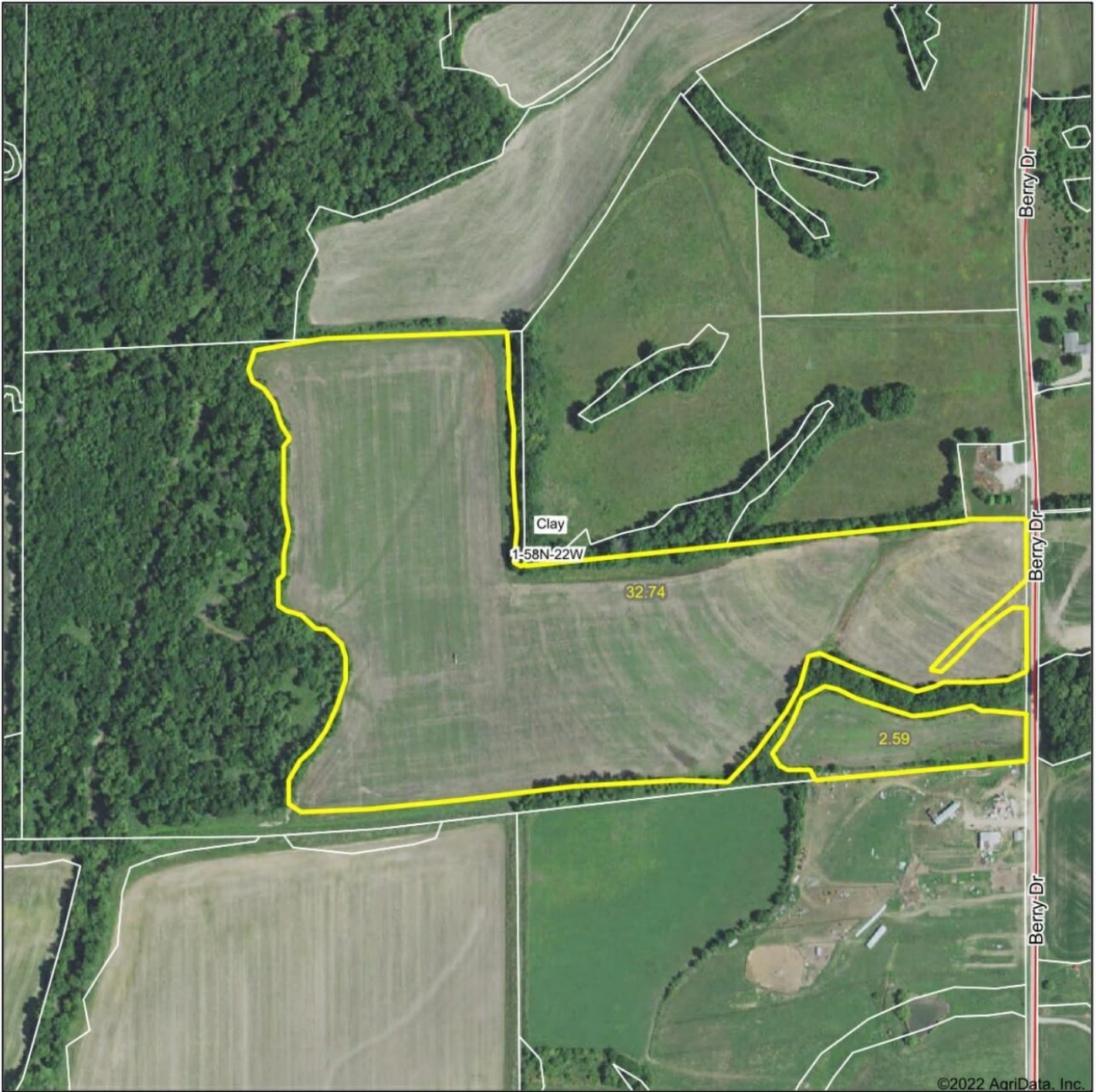
660-413-2582

bdavis@missourilandandfarm.com



66 acres, 37 tillable, 29 acres of timber with Parsons Creek running through. Excellent deer and turkey hunting with income. Atv trail winds through the timber and deer trails are abundant. Several locations for deer stands on both sides of the creek. Located 7 miles North of Meadville or 7 miles West of Linneus MO.

Aerial Map



©2022 AgriData, Inc.

Map Center: 39° 52' 14.77, -93° 19' 9.37



1-58N-22W
Linn County
Missouri

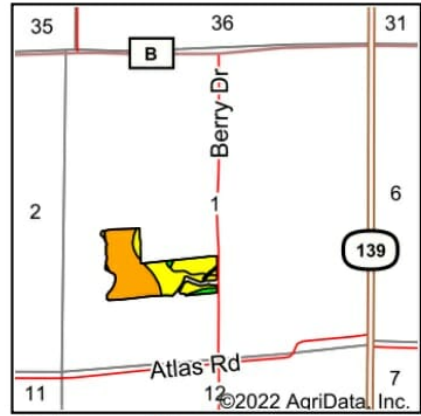
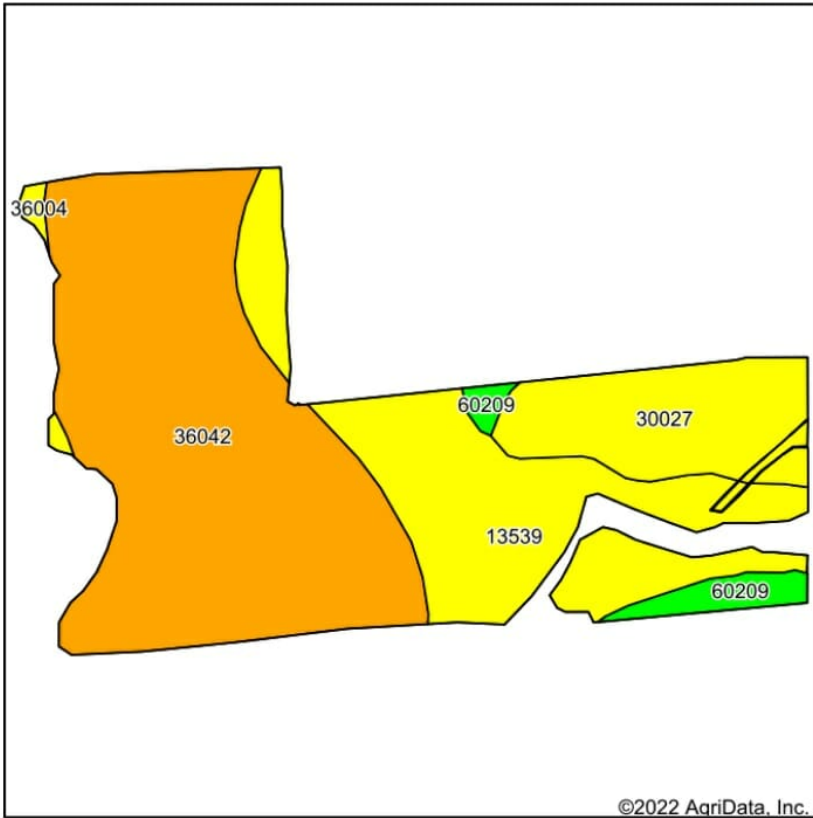


2/14/2022

Maps Provided By:
 **surety**
CUSTOMIZED ONLINE MAPPING
© AgriData, Inc. 2021 www.AgriDataInc.com

Field borders provided by Farm Service Agency as of 5/21/2008.

Soils Map



State: **Missouri**
 County: **Linn**
 Location: **1-58N-22W**
 Township: **Clay**
 Acres: **35.53**
 Date: **2/14/2022**



Soils data provided by USDA and NRCS.

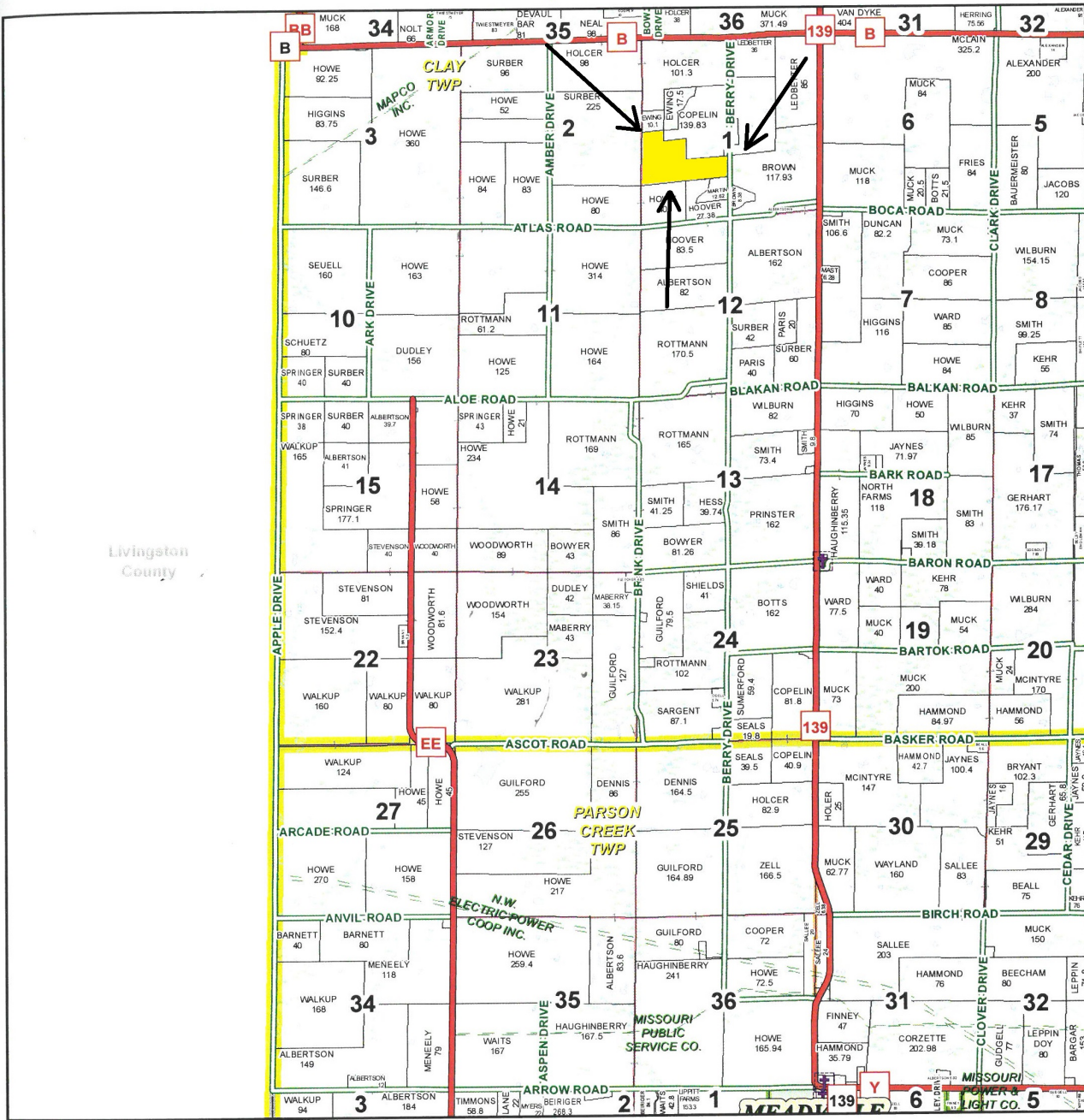
Area Symbol: MO115, Soil Area Version: 24

Code	Soil Description	Acres	Percent of field	Non-Irr Class Legend	Non-Irr Class *c	Alfalfa hay Tons	Caucasian bluestem Tons	Common bermudagrass Tons	Orchardgrass red clover Tons	Tall fescue Tons	Warm season grasses Tons	*n NCCPI Soybeans	
36042	Vesser silt loam, 0 to 2 percent slopes, occasionally flooded	18.97	53.4%		IIw							95	
13539	Kennebec silt loam, 0 to 2 percent slopes, frequently flooded	10.08	28.4%		IIIw			8	9	8	10	56	
30027	Armstrong clay loam, 5 to 9 percent slopes, moderately eroded	5.07	14.3%		IIIe							43	
60209	Purdin loam, 9 to 14 percent slopes, eroded	1.14	3.2%		IVe	5	8	7	8	7	8	55	
36004	Blackoar silt loam, 0 to 2 percent slopes, frequently flooded	0.27	0.8%		IIIw							86	
Weighted Average						2.50	0.2	0.3	2.5	2.8	2.5	3.1	*n 75.2

*n: The aggregation method is "Weighted Average using all components"
 *c: Using Capabilities Class Dominant Condition Aggregation Method
 Soils data provided by USDA and NRCS.

T58N-R22W

See Page 30



See Page 42

See Page 50

January 18, 2017

Linn County Commission

Dick King - Presiding Commissioner
Mike Brown - 1st District Commissioner
Josh Muck - 2nd District Commissioner

Data Courtesy Linn County
Geographic Information System

Marlene Graves - Assessor / GIS Manager

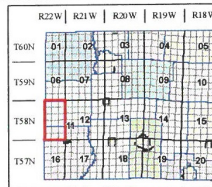
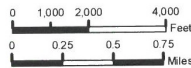
This data was primarily developed for tax purposes and is not considered survey accurate.

Most parcels > 5 ac labeled

GIS & Map Development By:



www.midlandgis.com



Legend	
	US Highways
	County Boundary
	City Limits
	ST Highways
	CO Highways
	Township-Range
	Streets
	Rail Roads
	Sections
	Political Township
	Streams
	Water
	Land Hooks
	Bridges
	Cemeteries
	Land Ownership
	Subdivisions



Wheeling

Meadville

Sumner

Hale

Swan
Natio
Wildlife



