



MISSOURI Land & Farm

www.missourilandandfarm.com • Office: 660-258-3185 • Fax: 660-258-2082

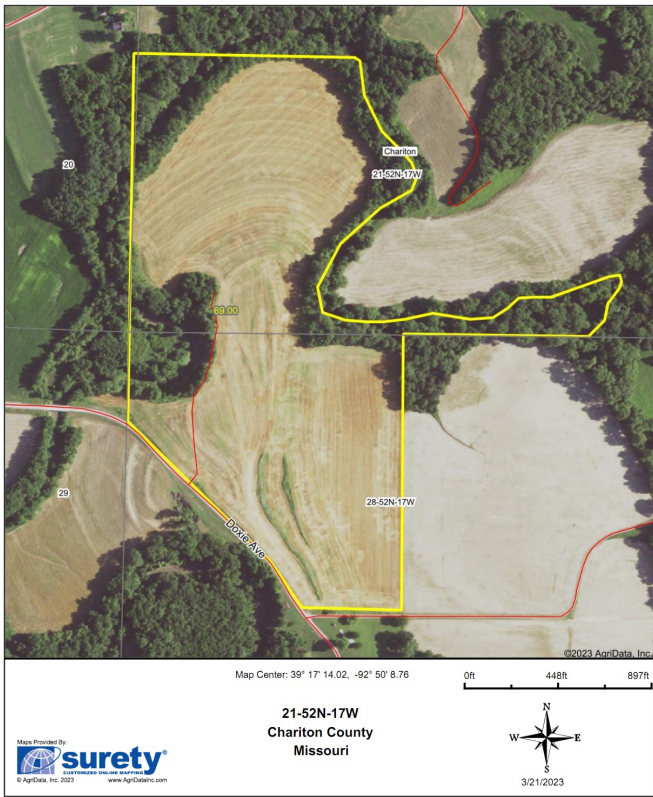
69 Acres -Chariton Co. Tillable

Doxie Ave, Glasgow, MO 65254

Chariton Co.

\$12,345

Aerial Map



CONTACT:



JEFFREY QUINN

Broker

660-734-3925

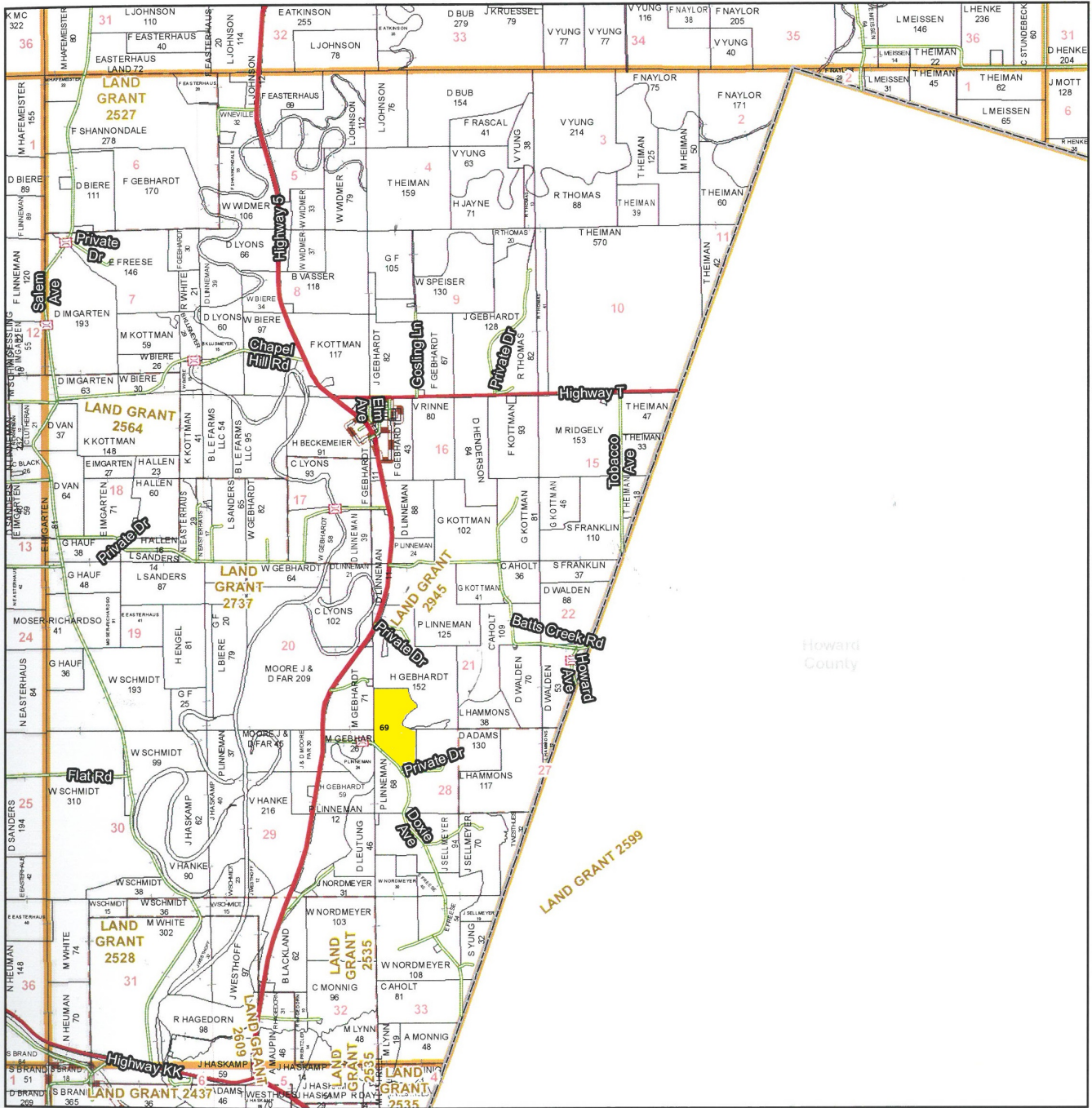
jquinn@missourilandandfarm.com

Using our network of buyers and sellers we were able to put this farm sale together for our sellers and buyers without it being actively on the market.

If you are looking for a specific property or wanting a free evaluation on your property please give us a call today!!!

T52N - R17W

See Page 55



See Page 69

See Page 61

See Page 65

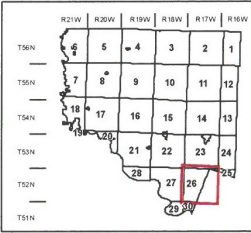
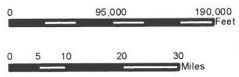
Chariton County Commission
 Tony McCollum - Presiding Commissioner
 Danny Price - Western District Commissioner
 Steve Atkinson - Eastern District Commissioner

This data was primarily developed for tax purposes and is not considered survey accurate.

Data Courtesy Chariton County Geographic Information System
 Darrin Gladbach - Assessor

Most parcels > 10 ac labeled

GIS & Map Development By:
MIDLAND GIS Solutions
 www.midlandgis.com



Legend	
	City Limits
	US Highways
	Township-Range
	ST Highways
	Sections
	CO Highways
	Land Grant
	Streets
	Political Township
	Rail Roads
	Land Ownership
	Streams
	Subdivisions
	Land Hooks
	Conservation & US
	Bridges