



# MISSOURI Land & Farm

[www.missourilandandfarm.com](http://www.missourilandandfarm.com) • Office: 660-258-3185 • Fax: 660-258-2082

## 80.7 Acre Secluded Timber Hunting Farm!!

Hwy 129, Bucklin, MO 64631

Linn County

**\$320,000**



### CONTACT:



**JEFFREY QUINN**

Broker

660-734-3925

[jquinn@missourilandandfarm.com](mailto:jquinn@missourilandandfarm.com)

This Linn Co. Missouri farm checks off a multiple boxes for quality hunting farm as far as things I would look for.

- Easy to get to.
- As little of road frontage as possible.
- Seclusion.
- Great area for quality whitetails.
- Great turkey numbers.
- Hardwood timber with nice openings for food plots.
- 30' deeded lane back to the main portion of the property

This farm is sure to please and could be set up great for hunting. Whether its big whitetails or thundering gobblers this property is sure to offer plenty of opportunities.

With only 30' of road frontage this property will also hunt bigger than that of a normal 80 acres with roads on 1-2 sides.

The open acres in the back 40 could be set up for food plots and a tower blind for those comfortable all day sits waiting on those rutting November whitetails.

For more information call, or text Jeff Quinn today 660-734-3925

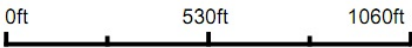


Aerial Map



©2022 AgriData, Inc.

Map Center: 39° 49' 29.47, -92° 51' 56.62



24-58N-18W  
Linn County  
Missouri



12/6/2022

Maps Provided By:

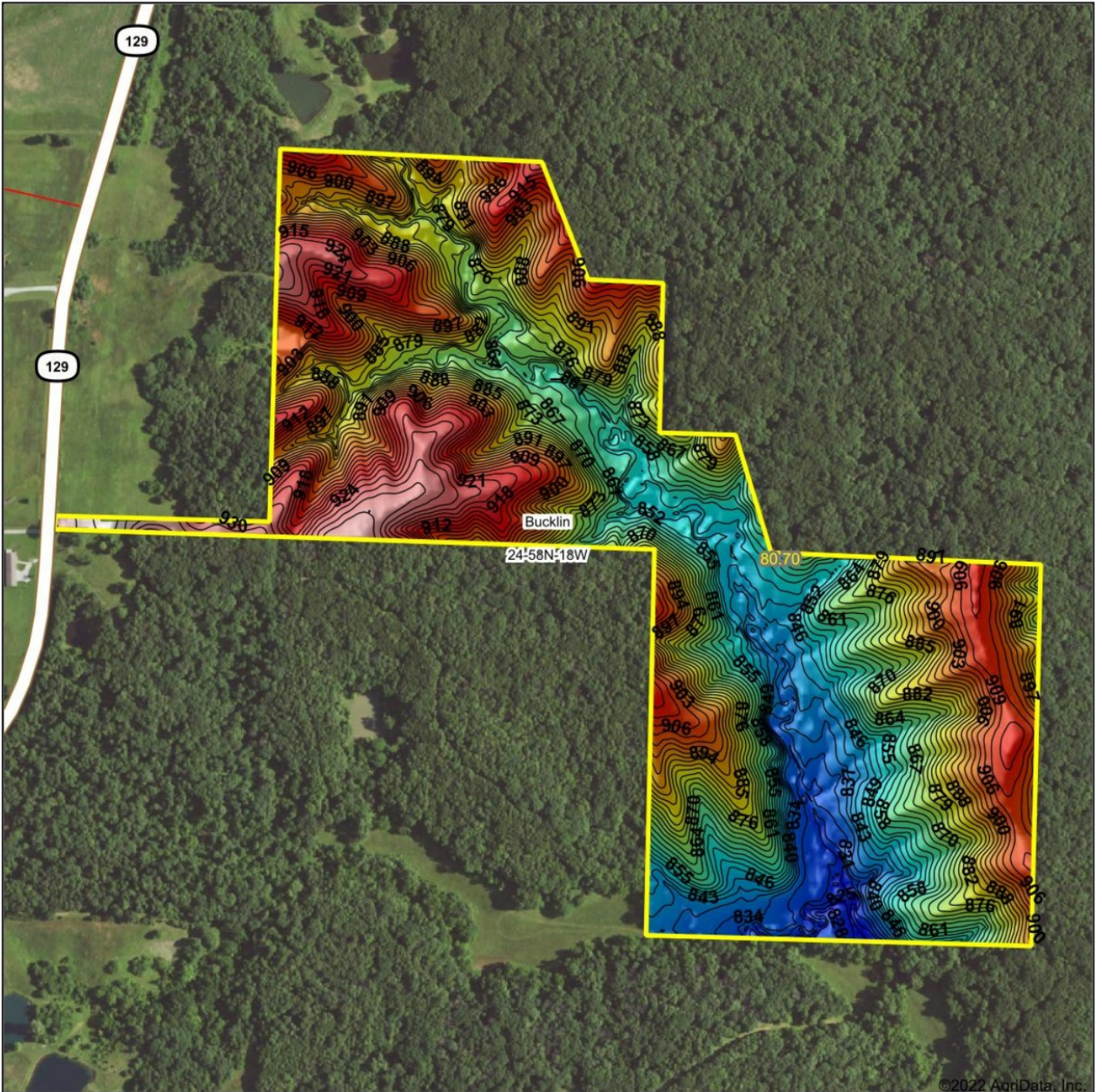


**surety**  
CUSTOMIZED ONLINE MAPPING

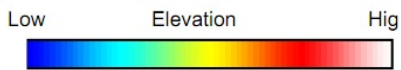
© AgriData, Inc. 2021      www.AgriDataInc.com



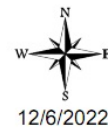
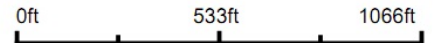
# Topography Hillshade



©2022 AgriData, Inc.



Source: USGS 3 meter dem  
Interval(ft): 3  
Min: 820.3  
Max: 946.3  
Range: 126.0  
Average: 881.4  
Standard Deviation: 26.8 ft



12/6/2022

**24-58N-18W**  
**Linn County**  
**Missouri**

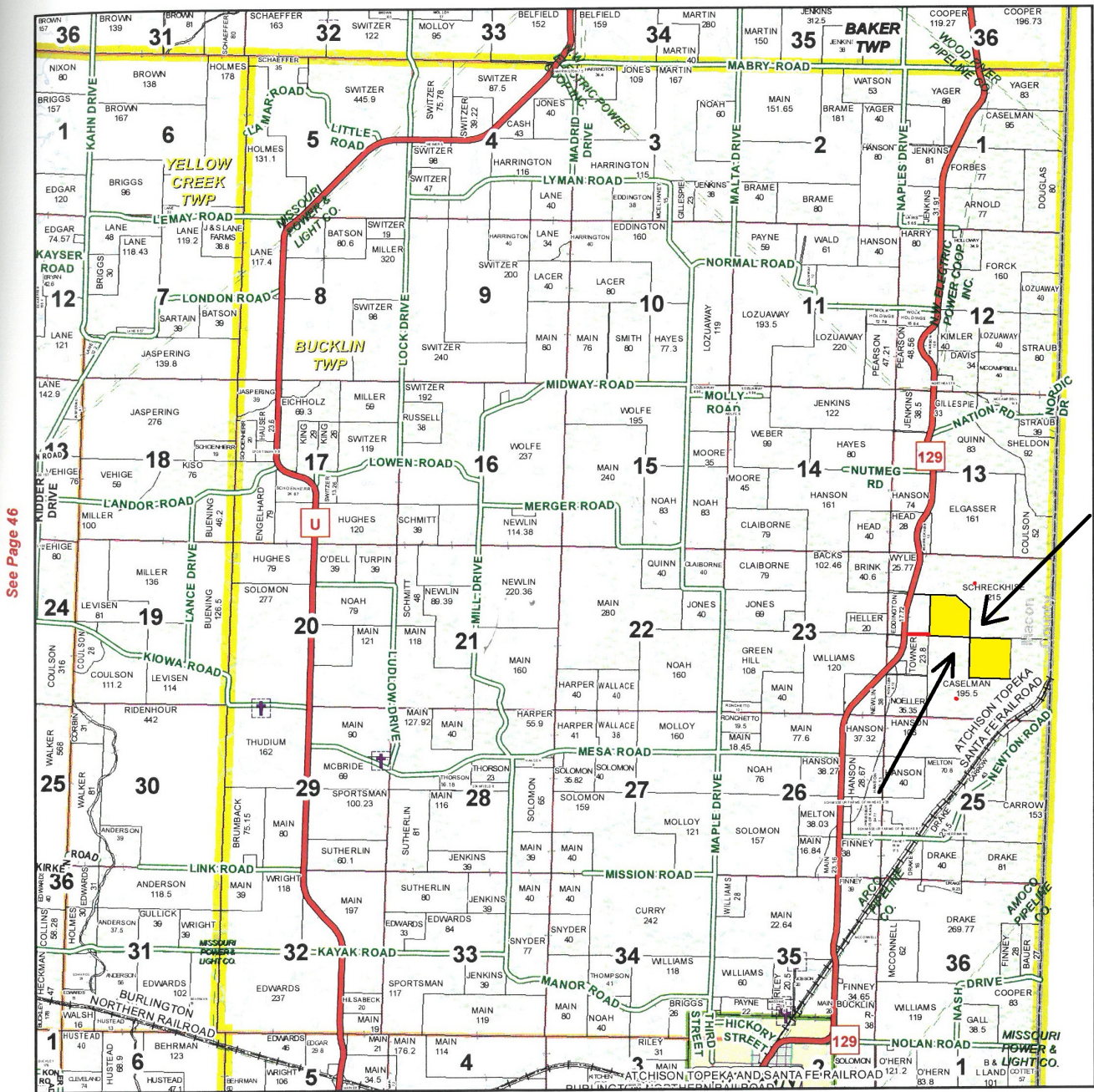
map center: 39° 49' 29.47, -92° 51' 56.62

Maps Provided By  
**surety**  
CUSTOMIZED ONLINE MAPPING  
© AgriData, Inc. 2021 www.AgriDataInc.com



# T58N-R18W

See Page 38



See Page 46

See Page 58

January 18, 2017

Linn County Commission

Dick King - Presiding Commissioner  
Mike Brown - 1st District Commissioner  
Josh Muck - 2nd District Commissioner

Data Courtesy Linn County  
Geographic Information System

Marlene Graves - Assessor / GIS Manager

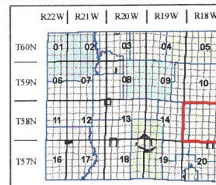
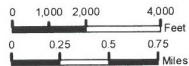
This data was primarily developed for tax purposes and is not considered survey accurate.

Most parcels > 5 ac labeled

GIS & Map Development By:



www.midlandgis.com



## Legend

- US Highways
- County Boundary
- City Limits
- Township Range
- Sections
- Political Township
- Water
- Land Ownership
- Subdivisions
- ST Highways
- CO Highways
- Streets
- Rail Roads
- Streams
- Land Hooks
- Bridges
- Cemeteries