



# MISSOURI Land & Farm

[www.missourilandandfarm.com](http://www.missourilandandfarm.com) • Office: 660-258-3185 • Fax: 660-258-2082

## 80 Acre Grebe Family Farm Auction!!

205th St, Rockport, MO 64482

Atchison County



**CONTACT:**



**JEFFREY QUINN**

Broker

660-734-3925

[jquinn@missourilandandfarm.com](mailto:jquinn@missourilandandfarm.com)

**CONTACT:**



**DAVE ATKINSON**

Sales & Auctioneer

660-788-3333

[datkinson@missourilandandfarm.com](mailto:datkinson@missourilandandfarm.com)

**ATCHISON CO. REAL ESTATE AUCTION  
80 ACRES m/I - 49.34 TILLABLE  
LIVE AND ONLINE BIDDING SIMULTANEOUSLY  
ATCHISON COUNTY MEMORIAL BUILDING  
417 S. MAIN STREET, ROCK PORT, MO 64482  
WEDNESDAY MARCH 1, 2023 @ 11 AM**

**AUCTIONEER'S UPDATE:** The closing date shall be moved from March 31, 2023 to on or before May 31, 2023. The successful bidder will have the farming rights with the 10% escrow check deposited and a copy of financing approval. If the successful bidder fails to close by the May 31, 2023 closing date the escrow check and possession of the crop will be released to the sellers.

**AUCTIONEERS NOTE:** The Grebe family came to Rock Port from Germany in about 1845. This farm has been passed down through the generations and is now being offered for sale for the first time since. The farm is located just North of Rock Port, MO North of County Rd 205. This 80 acres is a mixture of good tillable and recreation ground. This offering is a rare opportunity to purchase land, a concrete asset to farm, hunt, or invest in Atchison County. The tillable ground has been a steady producer for the Grebe family who has in the past farmed on shares. The farm will be free of all tenants at closing. The evidence of whitetail deer presence should make it a great place to hunt. As you pull up to the property there is a great place to build your new home with several new homes in the surrounding area. The old barn site overlooking the bottom is also a beautiful place to build. Please join us on the 1st for this great offering.

**AUCTION FORMAT:** Bidding will be available online and live at Atchison County Memorial Bldg. Online bidding will begin Feb 21st, 2023 and run through sale day March 1st end of sale. There will be a 1 hour pause on March 1st from 10 am to 11 am to connect the webcast. Online bidding will resume at the beginning of the live auction at 11 am. The farm will sell in 1 tract.

**Terms:** 5% buyers premium will be added to the final bid to arrive at purchase price. 10% down auction day with balance due at closing. Closing will be on or before **May 31st 2023**. Missouri Land and Farm and the Grebe family will not be held responsible for internet failure. Statements Auction Day take precedence over all ads and printed material. Financing is to be obtained prior to bidding. Sellers have the right to reject or accept final bid. The farm will be sold as is.

**GREBE FAMILY FARMS, SELLER  
MISSOURI LAND AND FARM AUCTIONS  
Jeff Quinn, Broker 660-734-3925  
Dave Atkinson, Auctioneer 660-788-3333**



All Measurements are  
For FSA Programs Only

**Wetland Determination Identifiers**

- Restricted Use
- ▼ Limited Restrictions
- Exempt from Conservation Compliance Provisions

Disclaimer: Wetland identifiers do not represent the size, shape or specific determination of the area. Refer to your original determination (CPA-026 and attached maps) for exact wetland boundaries and determinations, or contact NRCS.

**Atchison Co. FSA**

C=CORN-YEL-GR; CW=CORN-WHE-GR  
 POP=CORN-POP-GR; SB=SOYBN-COM-GR  
 WHT=WHEAT-HARD RED WINTER-GR  
 P=MIXFG-IGS-GZ; HAY=MIXFG-IGS-FG  
 GZ=GRASS-SMO-GZ; FG=GRASS-SMO-FG  
 GLS=MIXFG-IGS-LS; BLS=GRASS-SMO-LS  
 ALF=ALFAL-FG; I=Irrigated

All fields non-irrigated  
 \*Unless notated on Map

1 inch equals 463 feet

Program Year: 2023

Created: 11/16/2022

Flown: 2022-7-10

- clu
- crp
- plss

Farm 459  
 Tract 838



# Aerial Map



©2023 AgriData, Inc.

Map Center: 40° 26' 0.16, -95° 30' 48.69



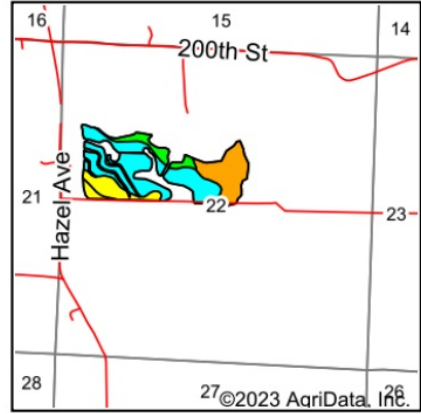
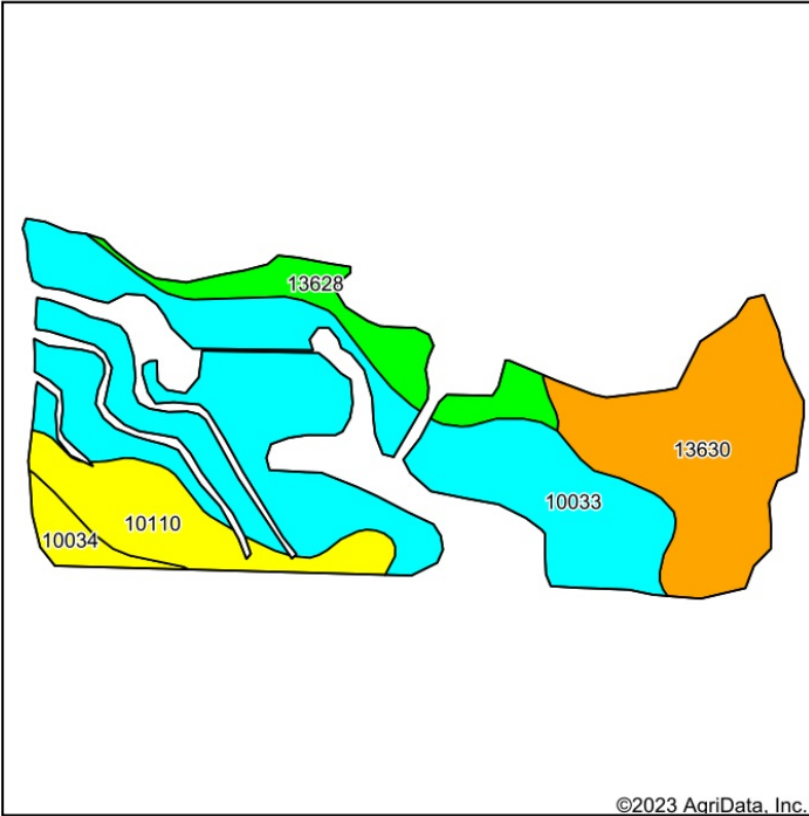
**22-65N-41W**  
**Atchison County**  
**Missouri**



1/6/2023

Maps Provided By:  
 **surety**  
CUSTOMIZED ONLINE MAPPING  
© AgriData, Inc. 2021 www.AgriDataInc.com

# Soils Map



State: **Missouri**  
 County: **Atchison**  
 Location: **22-65N-41W**  
 Township: **Clay**  
 Acres: **49.34**  
 Date: **1/9/2023**



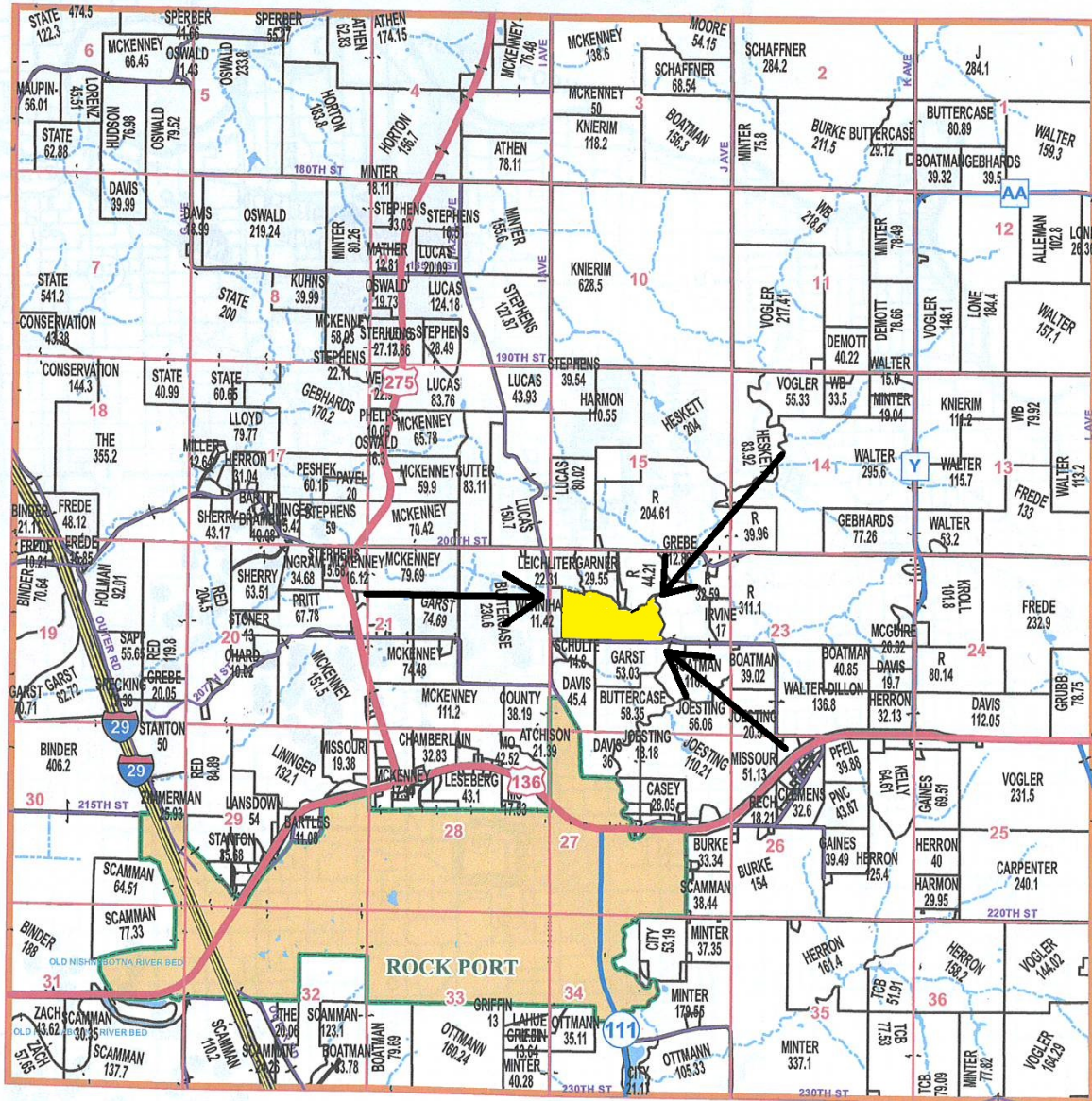
Soils data provided by USDA and NRCS.

Area Symbol: MO005, Soil Area Version: 25							
Code	Soil Description	Acres	Percent of field	Non-Irr Class Legend	Non-Irr Class *c	Irr Class *c	*n NCCPI Soybeans
10033	Ida silt loam, 14 to 25 percent slopes, eroded	25.88	52.5%			Vle	56
13630	Colo silt loam, deep loess, 0 to 2 percent slopes, occasionally flooded	11.75	23.8%			llw	84
10110	Monona silt loam, 5 to 9 percent slopes, eroded	5.70	11.6%			llle	76
13628	Napier-Gullied land complex, 5 to 14 percent slopes	4.58	9.3%			Ive llle	10
10034	Ida silt loam, 9 to 14 percent slopes, eroded	1.43	2.9%			llle	68
<b>Weighted Average</b>						<b>4.43</b>	<b>*n 61.1</b>

\*n: The aggregation method is "Weighted Average using all components"  
 \*c: Using Capabilities Class Dominant Condition Aggregation Method  
 \*- Irr Class weighted average cannot be calculated on the current soils data due to missing data.

# Atchison County, MO T65N-R41W

See Pages 27 & 29



See Page 45

See Page 39

See Page 49

**Map Date:** January 09, 2023  
**Atchison County Commission**

Curtis Livengood - Presiding Commissioner  
Richard C Burke - Southern District  
Jim Quimby - Northern District

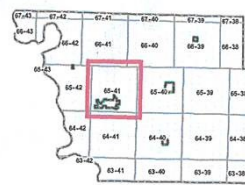
**Data Courtesy of Atchison County Geographic Information System**

Lori Jones - Assessor / GIS Analyst  
Stephanie Shineman - RE Clerk / GIS Coordinator  
<https://atchison.integritygis.com>

*This data was primarily developed for tax purposes and is not considered survey accurate.*

Most parcels > 10 ac labeled

1 inch = 0.88 miles



- Legend**
- County Boundary
  - City Limits
  - Township-Range
  - Sections
  - Political Townships
  - Water
  - Levee
  - Land Ownership
  - US Highways
  - ST Highways
  - CO Highways
  - Streets / Roads
  - Rail Roads
  - Streams
  - Land Hooks
  - Easements

