



# MISSOURI Land & Farm

www.missourilandandfarm.com • Office: 660-258-3185 • Fax: 660-258-2082

## 80 Acre Macon County Timber Tract!!

Atlantic Loop

Macon County

**\$200,000**



### CONTACT:



**JEFFREY QUINN**

Broker

660-734-3925

[jquinn@missourilandandfarm.com](mailto:jquinn@missourilandandfarm.com)

If you're lucky, you've got an incredible tract of hardwood timber of your own in Macon County, one of the areas that has made the Show Me State famous for producing giant whitetails. For those not so fortunate, here's your chance to make your own luck.

This 80 Acre parcel of oak timber is what comes to mind when you think of what hunting SHOULD look like. With trails throughout the property, an abundance of deer and turkey, and killer location....THIS is one of the best recreational farms on the market today.

Maybe you're looking for a property to hunt in Missouri. Maybe, you're from this area but are seeking ownership of the opportunity to experience the heart-racing November action that only big timber can provide.....

Call Jeff Quinn at 660-734-3925 to check out this piece of Midwestern Hunting Paradise!

# Aerial Map



©2019 AgriData, Inc.

Map Center: 39° 45' 49.38, -92° 50' 4.35



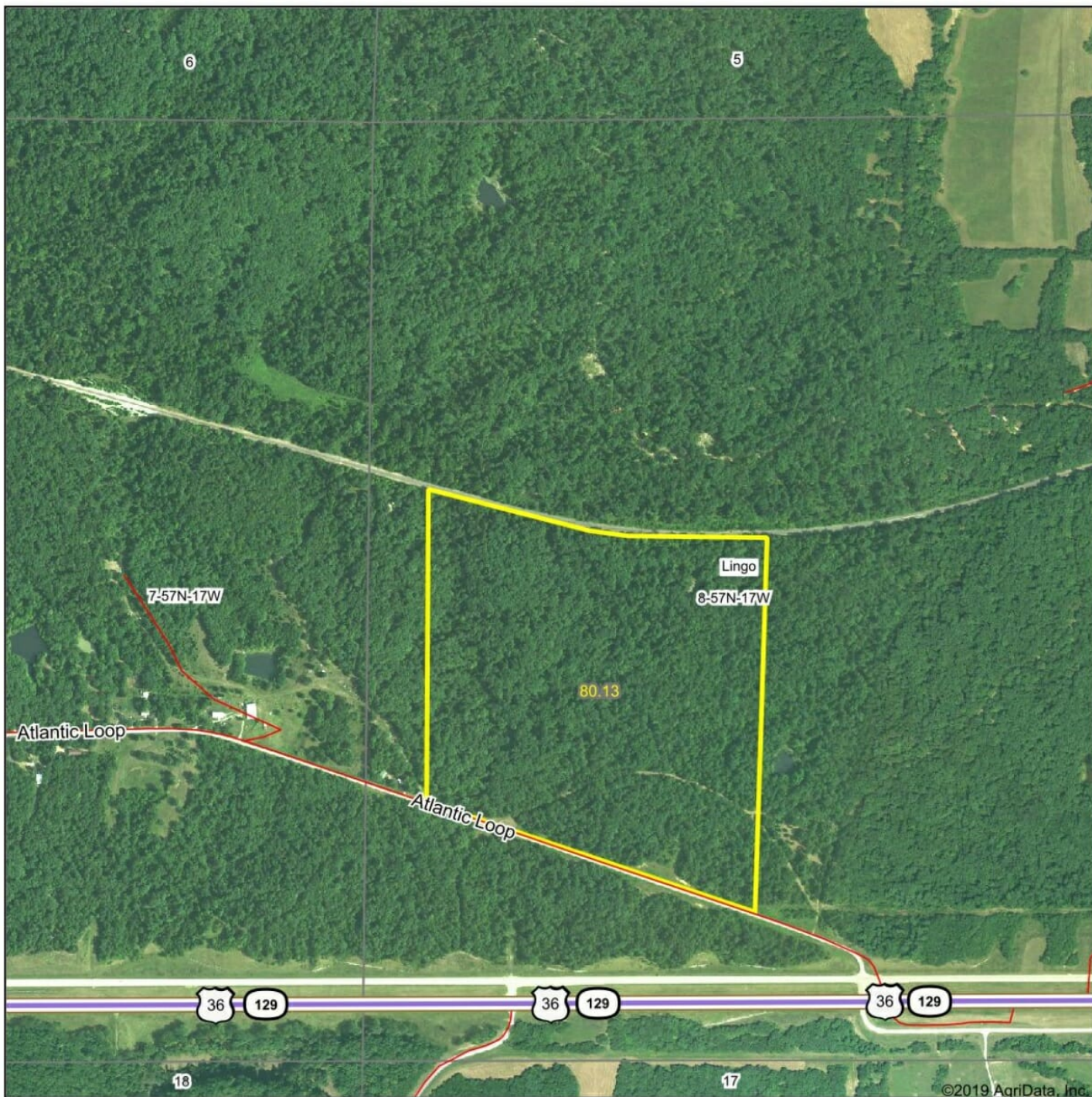
**8-57N-17W**  
**Macon County**  
**Missouri**



1/20/2020

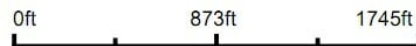
Maps Provided By:  
 **surety**<sup>®</sup>  
CUSTOMIZED ONLINE MAPPING  
© AgriData, Inc. 2019 [www.AgriDataInc.com](http://www.AgriDataInc.com)

# Aerial Map



©2019 AgriData, Inc.

Map Center: 39° 45' 57.6, -92° 50' 7.06



**8-57N-17W**  
**Macon County**  
**Missouri**

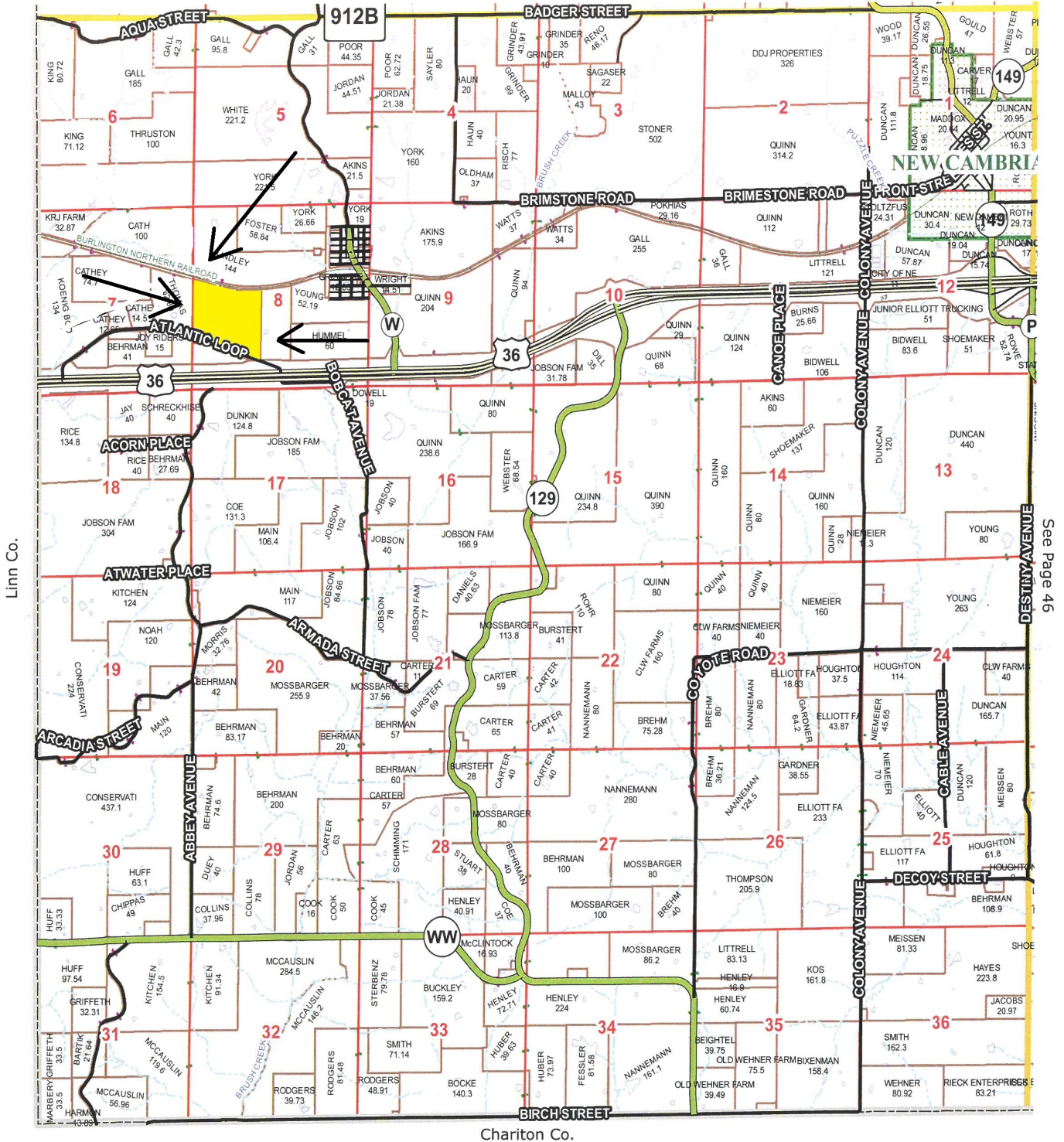


1/20/2020



# Lingo Township 16 T-57-N R-17-W

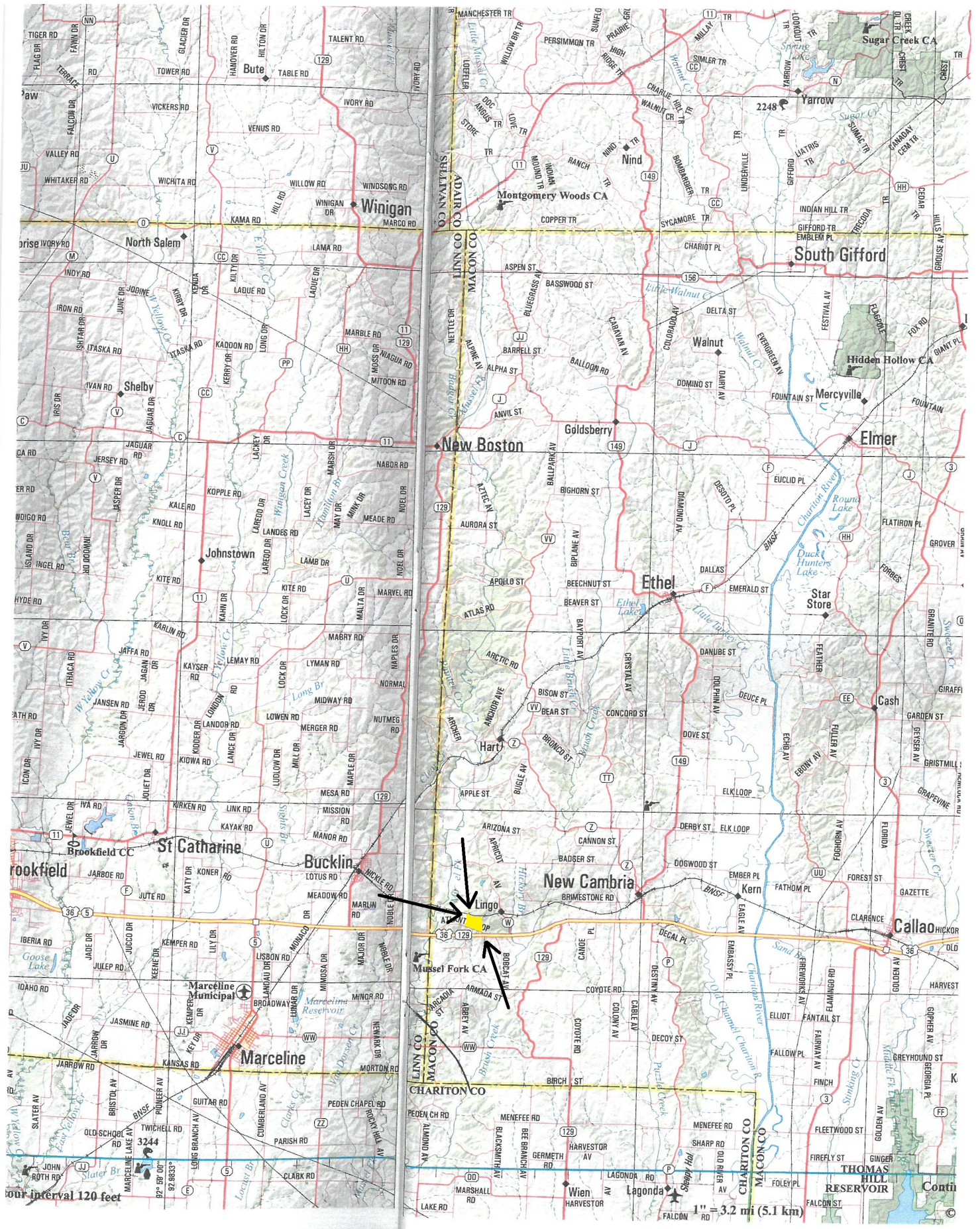
See Page 42



Linn Co.

See Page 46

Chariton Co.



Lingo  
Mussel Fork CA  
Marcelline