



MISSOURI Land & Farm

www.missourilandandfarm.com • Office: 660-258-3185 • Fax: 660-258-2082

89 Acres – Prime Timber/Turnkey Hunting Paradise!!

MO-129, New Cambria, MO 63558

Macon County

\$420,000



CONTACT:

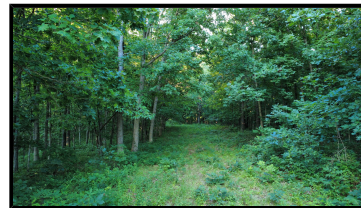
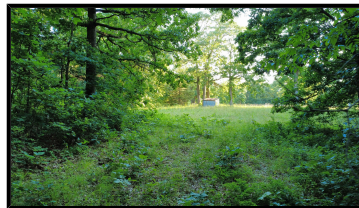
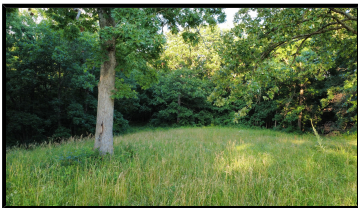


JEFFREY QUINN

Broker

660-734-3925

jquinn@missourilandandfarm.com



89 Acres – A Private Outdoor Escape with Prime Access

Located just two miles off Highway 36 with easy road frontage on Highway 129, this 89-acre recreational retreat offers the perfect blend of seclusion and accessibility. A gated entrance opens into a beautifully wooded property with a mix of mature timber and well-maintained open areas, ideal for food plots, camping, hiking, and other outdoor activities.

For the Outdoor Enthusiast

Whether you're into hunting, hiking, wildlife photography, or simply enjoying nature, this property offers something for everyone. Several cut and maintained trails meander through the land, making it easy to explore on foot, ATV, or horseback. The layout provides quiet access to hidden areas, perfect for wildlife observation or setting up hunting stands—several of which are already in place. The southern and eastern portions of the property feature open plots perfect for attracting deer, turkey, and other wildlife.

Scenic Topography

Rolling hills, wooded ridges, and peaceful valleys create a dynamic landscape that's both functional and beautiful. These natural features encourage wildlife movement while offering stunning views.

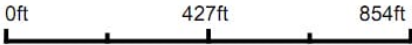
Contact

To experience the outdoors at its finest, contact Jeff Quinn at (660) 734-3925

Aerial Map



Map Center: 39° 44' 39.7, -92° 47' 46.3

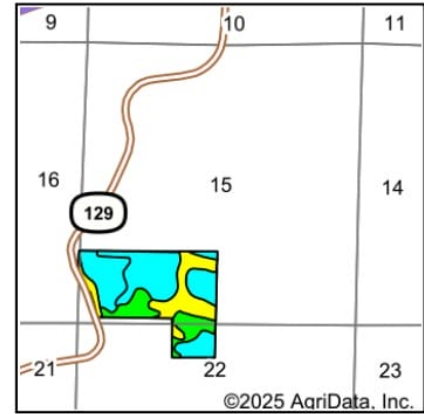
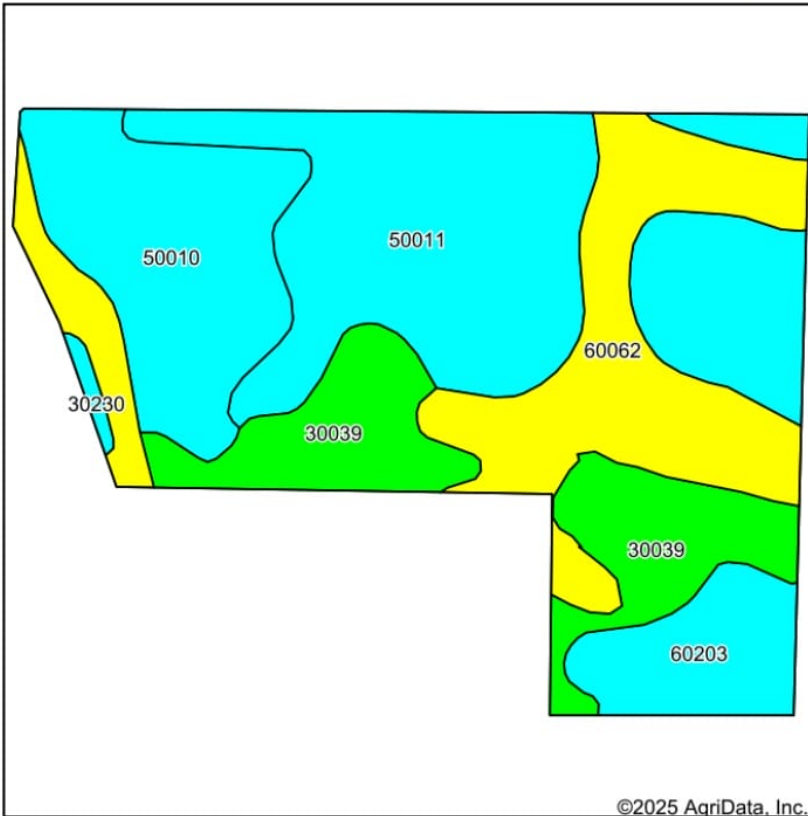


Maps Provided By:
 **surety**
CUSTOMIZED ONLINE MAPPING
© AgriData, Inc. 2023 www.AgriDataInc.com

15-57N-17W
Macon County
Missouri

7/8/2025

Soils Map



State: **Missouri**
 County: **Macon**
 Location: **15-57N-17W**
 Township: **Lingo**
 Acres: **87.73**
 Date: **7/8/2025**

Maps Provided By:

 CUSTOMIZED ONLINE MAPPING
 © AgriData, Inc. 2023 www.AgriDataInc.com



Soils data provided by USDA and NRCS.

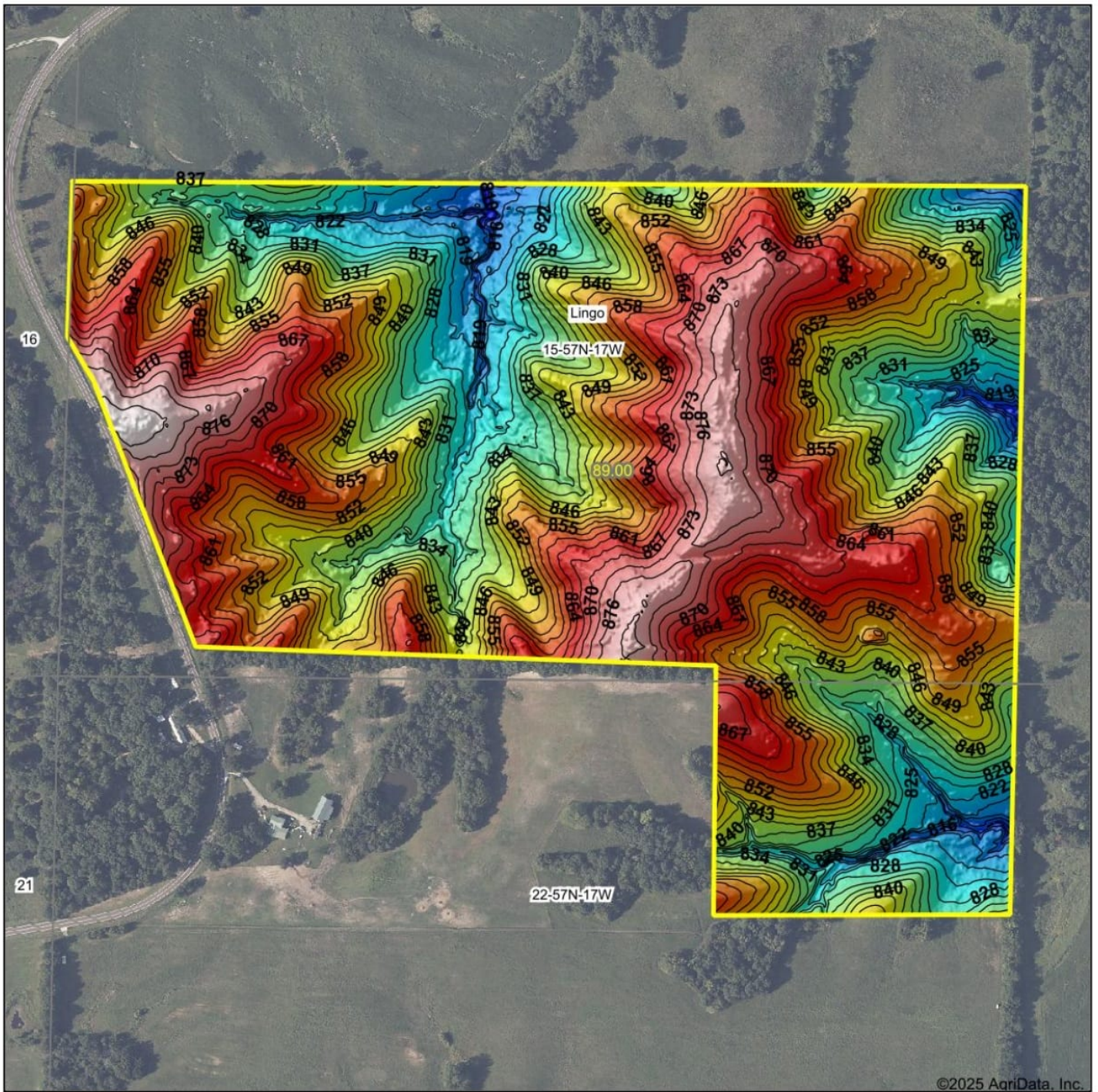
Area Symbol: MO121, Soil Area Version: 28												
Code	Soil Description	Acres	Percent of field	Non-Irr Class Legend	Non-Irr Class *c	Alfalfa hay Tons	Caucasian bluestem Tons	Common bermudagrass Tons	Orchardgrass red clover Tons	Tall fescue Tons	Warm season grasses Tons	*n NCCPI Soybeans
50011	Winnegan loam, 20 to 35 percent slopes	30.72	34.9%		Vle	5	7	6	7	6	7	10
60062	Bevier silty clay loam, 3 to 8 percent slopes, moderately eroded	20.06	22.9%		Ille							49
50010	Winnegan loam, 14 to 20 percent slopes, eroded	15.24	17.4%		Vle	5	7	6	7	6	7	38
30039	Armstrong loam, 9 to 14 percent slopes, eroded	14.68	16.7%		IVe							46
60203	Purdin loam, 14 to 20 percent slopes, eroded	6.54	7.5%		Vle	5	7	6	7	6	7	44
30230	Winnegan loam, 20 to 35 percent slopes, eroded	0.49	0.6%		Vle	5	7	7	8	7	8	10
Weighted Average					4.98	3	4.2	3.6	4.2	3.6	4.2	*n 32.3

*n: The aggregation method is "Weighted Average using all components"

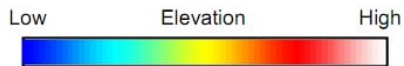
*c: Using Capabilities Class Dominant Condition Aggregation Method

Soils data provided by USDA and NRCS.

Topography Hillshade



©2025 AgriData, Inc.



Source: USGS 1 meter dem

Interval(ft): 3

Min: 806.5

Max: 883.6

Range: 77.1

Average: 848.3

Standard Deviation: 16.47 ft



15-57N-17W
Macon County
Missouri

Boundary Center: 39° 44' 39.7, -92° 47' 46.3

Maps Provided By:



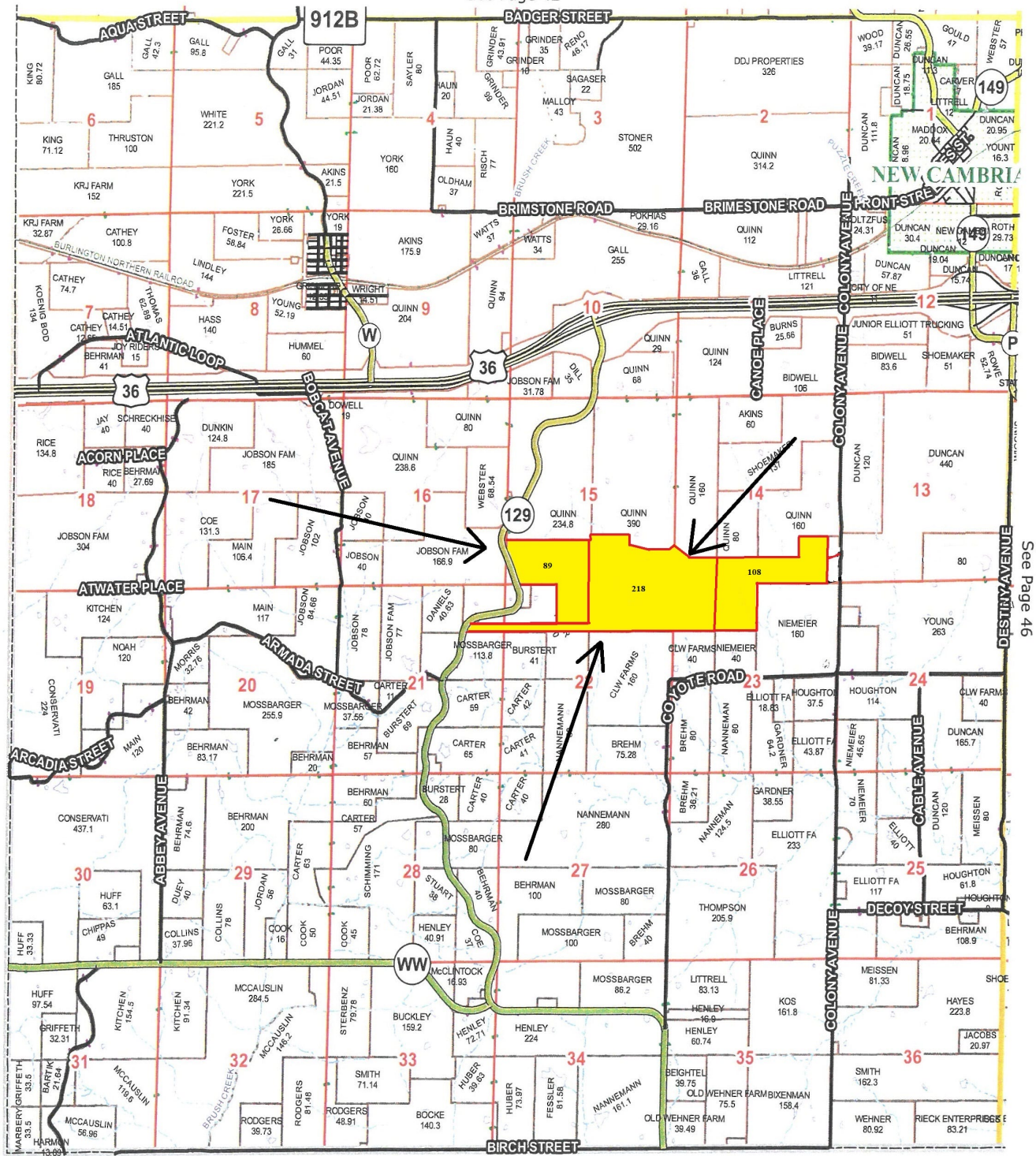
© AgriData, Inc. 2023

www.AgriDataInc.com



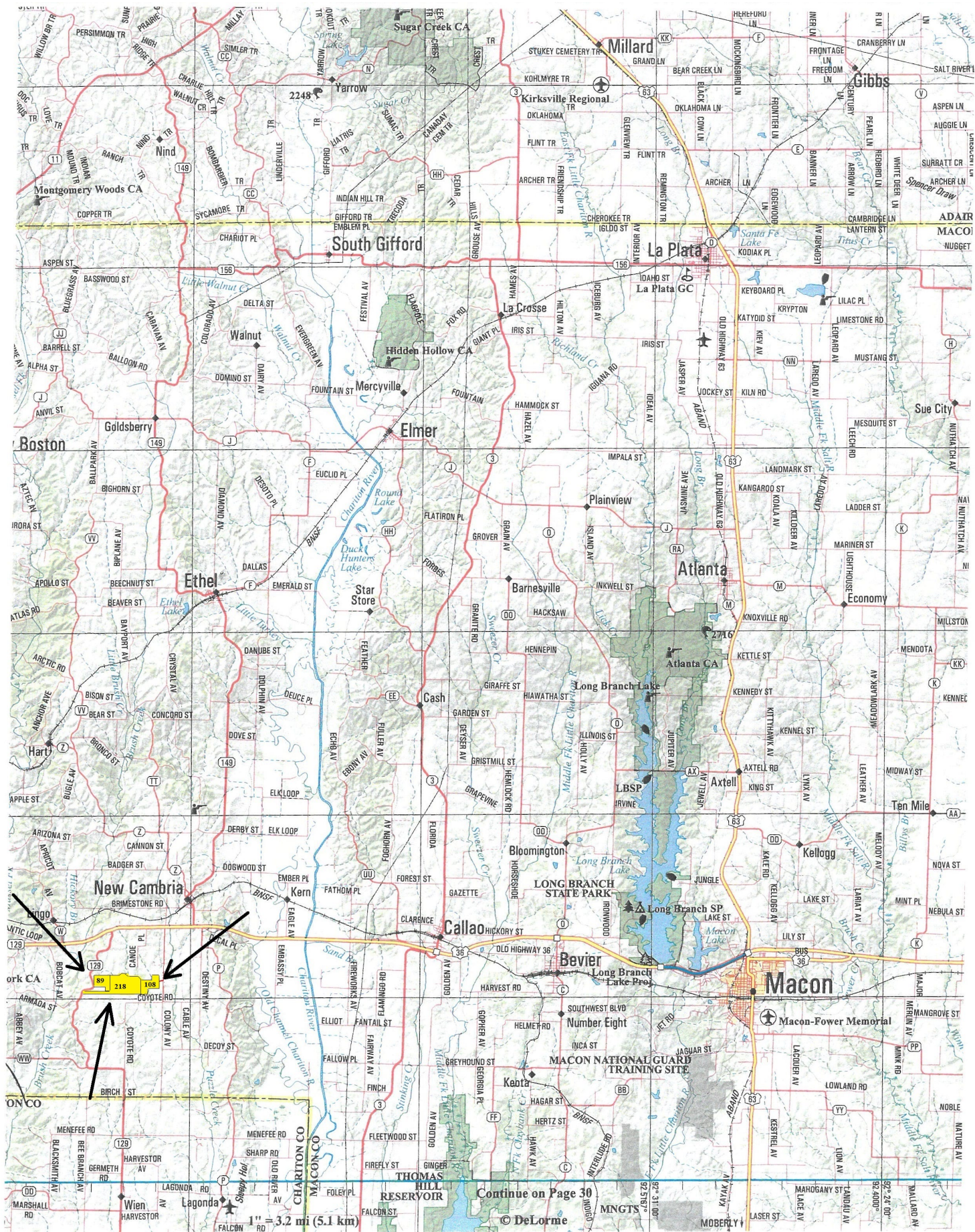
Lingo Township 16 T-57-N R-17-W

See Page 42



See Page 46

Chariton Co.



Continue on Page 30

© DeLorme