



# MISSOURI Land & Farm

www.missourilandandfarm.com • Office: 660-258-3185 • Fax: 660-258-2082

**Trophy Deer, Turkey, Waterfowl, Dove  
Hunting, & Fishing!!**

**Bonhomme Island**

**St. Charles County**

**\$3,500**



**CONTACT:**

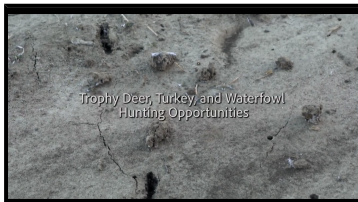


**JEFFREY QUINN**

Broker

**660-734-3925**

jquinn@missourilandandfarm.com



Trophy Deer, Turkey and Waterfowl  
Hunting Opportunities



Greens Bottom - St. Charles County



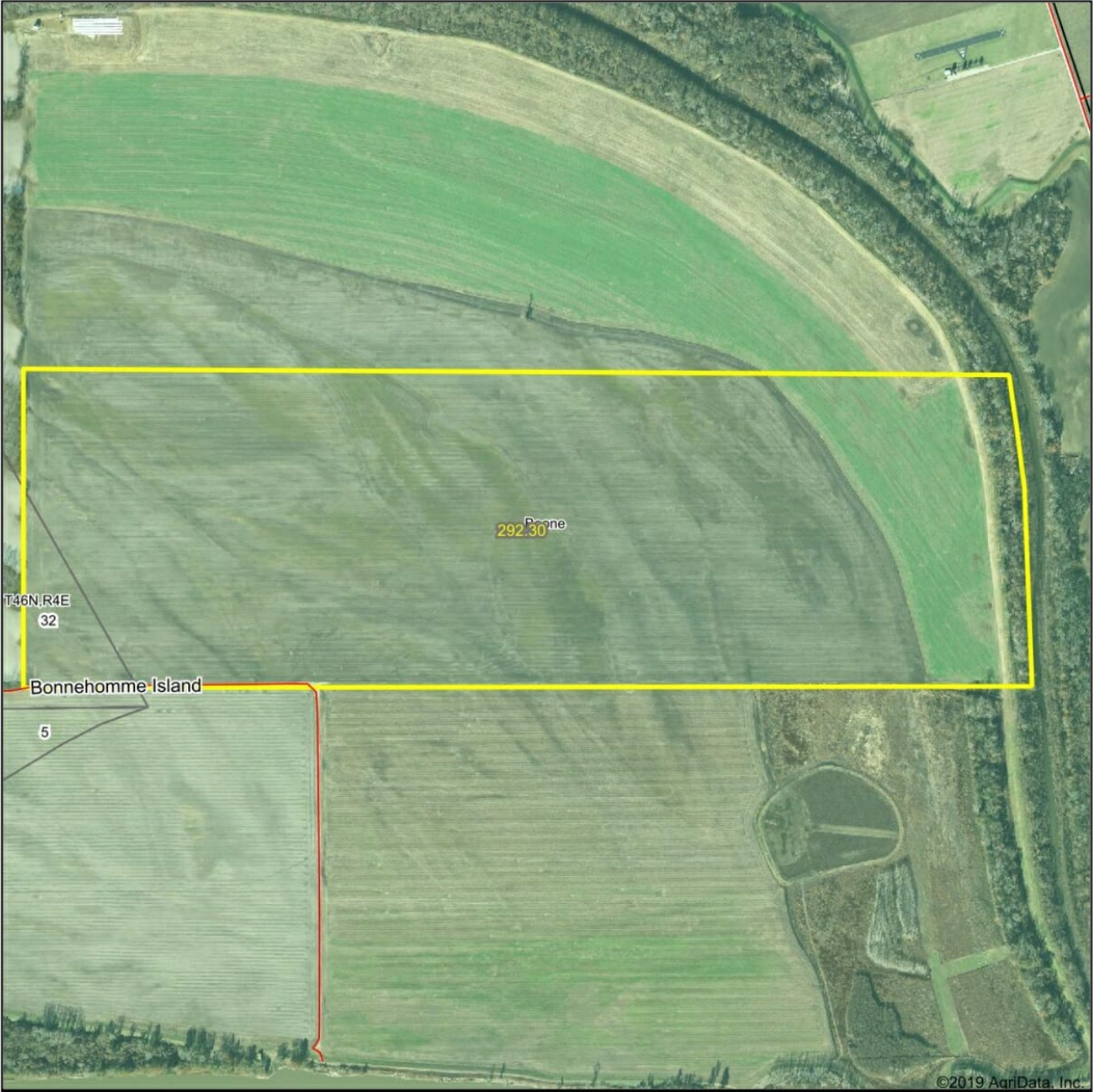
Its not every day you can find a hunting lease inside St. Louis. Why travel hours to hunt when you can hunt this spot close to home?

This area is well know for big deer. Upon inspection there where ample deer and turkey tracts. It would make a great place for some waterfowl or dove hunting.

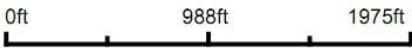
The river banks would also offer mushrooms and plenty of places to fish.

FA

Aerial Map



Map Center: 38° 41' 35.14, -90° 35' 23.21



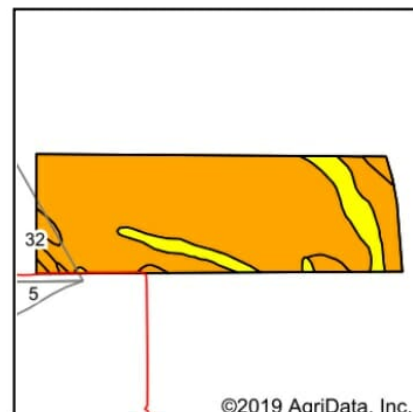
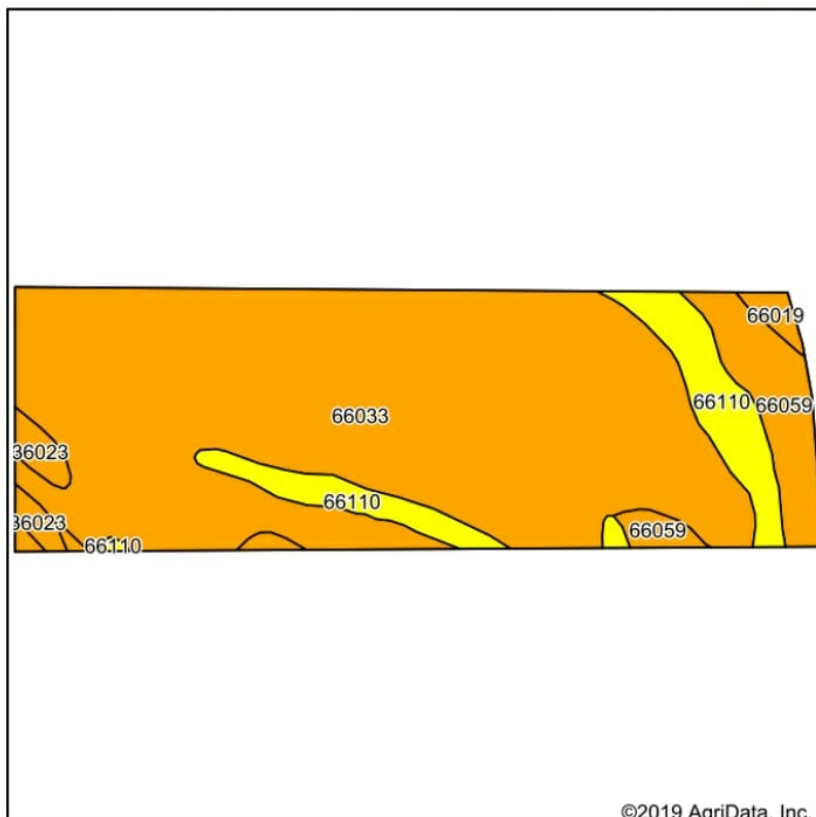
Maps Provided By:  
 **surety**  
CUSTOMIZED ONLINE MAPPING  
© AgriData, Inc. 2019      www.AgriDataInc.com

St Charles County  
Missouri





# Soils Map



State: **Missouri**  
 County: **St Charles**  
 Location: **38° 41' 35.14, -90° 35' 23.21**  
 Township: **Boone**  
 Acres: **278.14**  
 Date: **3/16/2020**

Maps Provided By: **surety**  
 CUSTOMIZED ONLINE MAPPING  
 © AgriData, Inc. 2019 [www.AgriDataInc.com](http://www.AgriDataInc.com)



Soils data provided by USDA and NRCS.

Area Symbol: MO183, Soil Area Version: 19												
Code	Soil Description	Acres	Percent of field	Non-Irr Class Legend	Non-Irr Class *c	Alfalfa hay	Caucasian bluestem	Common bermudagrass	Orchardgrass red clover	Tall fescue	Warm season grasses	*n NCCPI Soybeans
66033	Lowmo-Peers complex, 0 to 2 percent slopes, occasionally flooded	217.25	78.1%		Ilw			8	8	7	9	73
66110	SansDessein silty clay, 0 to 2 percent slopes, occasionally flooded	28.82	10.4%		Illw			8	7	8	9	46
66059	Peers silty clay loam, 0 to 2 percent slopes, occasionally flooded	23.63	8.5%		Ilw			8	9	8	10	78
36023	Landes fine sandy loam, 0 to 2 percent slopes, occasionally flooded	5.47	2.0%		Ilw	6	9	8	7	7	9	59
66019	Lowmo silt loam, 0 to 2 percent slopes, occasionally flooded	2.97	1.1%		Ilw			8	7	7	9	70
Weighted Average						0.1	0.2	8	8	7.2	9.1	*n 70.3

\*n: The aggregation method is "Weighted Average using major components"

\*c: Using Capabilities Class Dominant Condition Aggregation Method

Soils data provided by USDA and NRCS.