



MISSOURI Land & Farm

www.missourilandandfarm.com • Office: 660-258-3185 • Fax: 660-258-2082

**131 Acres Randolph Co. –
Tillable/Hunting/Fishing/Building Spots
(Cairo School District)!!**

Co Road 1265 and 1250, Huntsville, MO 65259

Randolph County

\$720,500



CONTACT:



JEFFREY QUINN

Broker

660-734-3925

jquinn@missourilandandfarm.com



Gobblers Knob – (East Tract) Acres of Prime Northern Missouri Hunting Ground

In the heart of Northern Randolph County, Missouri, just north of Huntsville, lies a tract of land that feels more like a calling than a property. They've called it *Gobblers Knob* for decades—and when you step foot on it, you'll understand why. Then you'll hear it. Long beards echo through the timber at first light, their thunderous gobbles rolling down hardwood ridges like nature's alarm clock. This is sacred ground for the true outdoors man.

Picture rolling hilltop pastures giving way to fertile, tillable bottom land. Hardwood ridges blend into thick creek bottoms, where white oaks drop acorns and deer trails are worn deep into the earth. Water flows naturally through the land, carving out the kind of meandering creeks and hidden hollows that attract wildlife year-round. It's a property that feels untouched yet groomed by time—a landscape that convinces you God Himself is an avid sportsman.

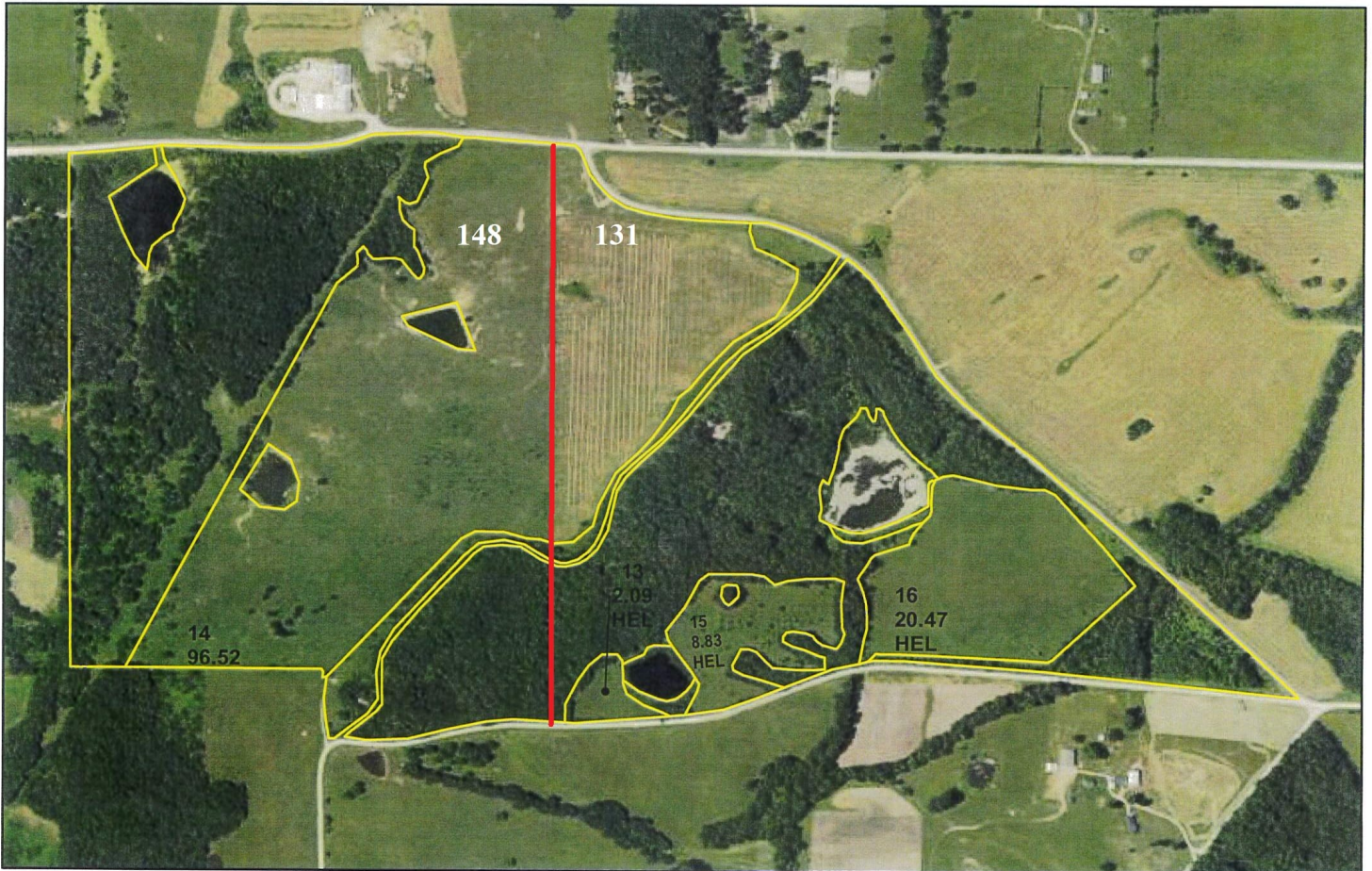
The layout is a dream: mature timber lines frame 44 tillable acres currently rented for \$160/acre, bringing in \$7040 for the 2025 season. That's steady income, with room to negotiate upward. But this farm isn't just about income—it's about opportunity. With strategic habitat diversity, the deer and turkey hunting here is as consistent as it is thrilling. Whether you're glassing velvet bucks in August or chasing rut-crazed giants in November, the stand sites are endless. There are bedding thickets, travel corridors, ridge funnels, and open field edges practically begging for a tree stand or blind.

Fishing and waterfowl opportunities are top-tier as well. Just minutes from Sugar Creek Lake and Thomas Hill Reservoir, and surrounded by countless strip pits, cattle ponds, and private wetlands, this region consistently ranks among the best for goose hunting in the area. It's no wonder waterfowl enthusiasts are quietly migrating here, year after year.

Thinking long-term? This land holds value in every corner: quality timber, fertile soil, and stunning build sites with panoramic views. Whether you're building a hunting cabin, a family lodge, or just planting roots in the middle of whitetail country, *Gobblers Knob* is ready.

This is more than a farm—it's a destination. A legacy. The kind of place you share with your kids and grand kids, where every trail tells a story and every season brings something new.

For a private tour or more info, call or text **Jeff Quinn at 660-734-3925**.



crp

clu

Farm 7214

Tract 10322

SB=Soybeans-COM-GR, DCSB=Double Crop SB

C=Corn-Yel-GR, Wht=Wheat-SRW-GR

Milo=Gr Sorghum-GR-GR, Hay=Grass-FTA-Fg

Gz=Grass-FTA-Gz, Ls=Grass-FTA-Left Stand

ALF=Alfalfa-None-Fg, Oats=Oats-SPR-Fg

ALF Mix=Mixed Fg-AGM-Fg, FP=Food Plot

Clover=Clover-Red-Fg,

Mixed IGS or LGM=Mixed Fg LGM or IGS

Randolph Co. FSA

1:7,630

Program Year: 2025

Created: 12/3/2024

Flown: 2022-6-20

All Measurements are

Wetland Determination Identifiers

Restricted Use

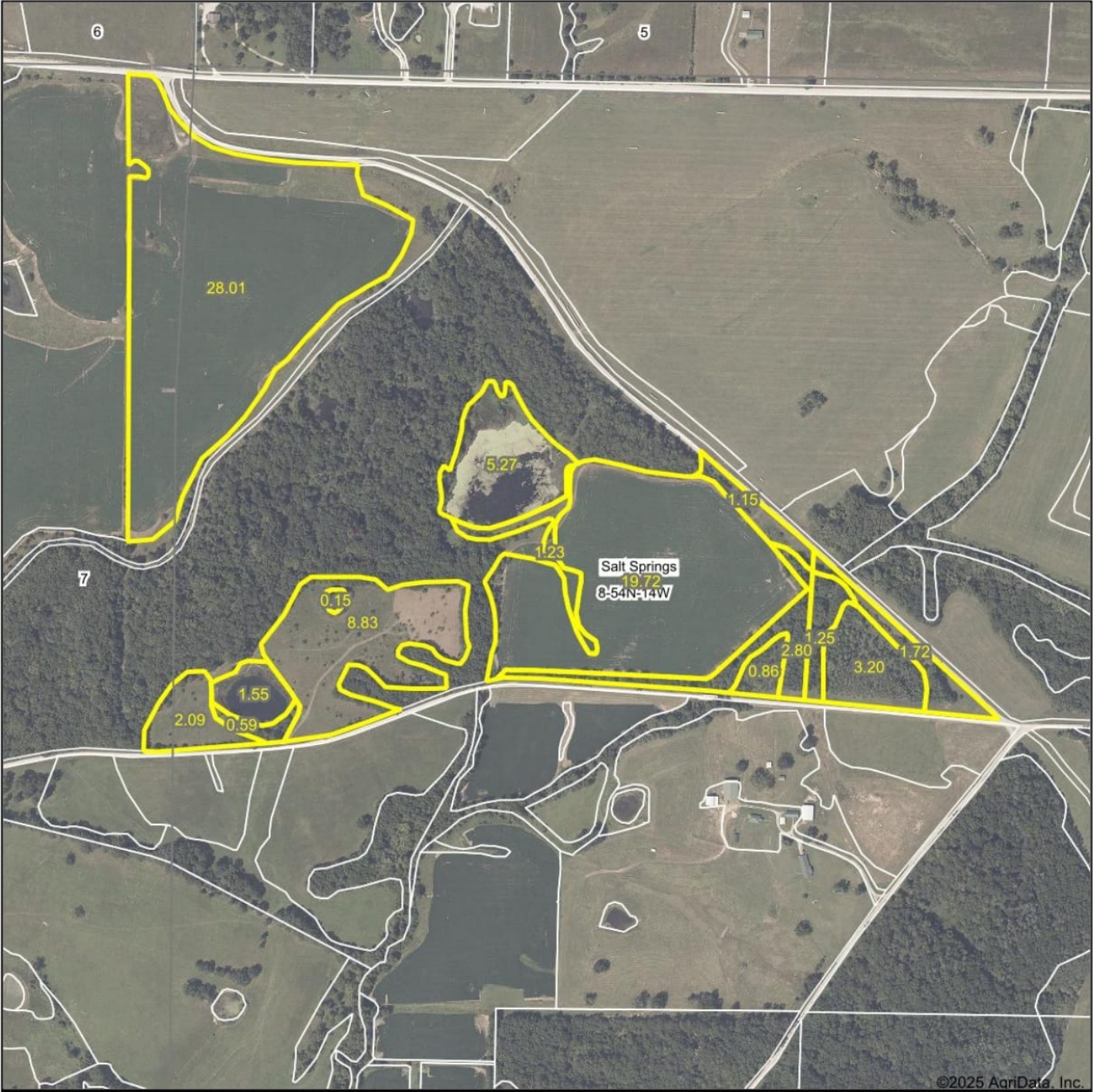
Limited Restrictions

Exempt from Conservation Compliance Provisions

Disclaimer: Wetland identifiers do not represent the size, shape or specific determination of the area.

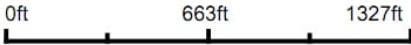
Refer to your original determination (CPA-026 and attached maps) for exact wetland boundaries and determinations, or contact NRCS.

Aerial Map



©2025 AgriData, Inc.

Boundary Center: 39° 29' 40.82, -92° 30' 36.19



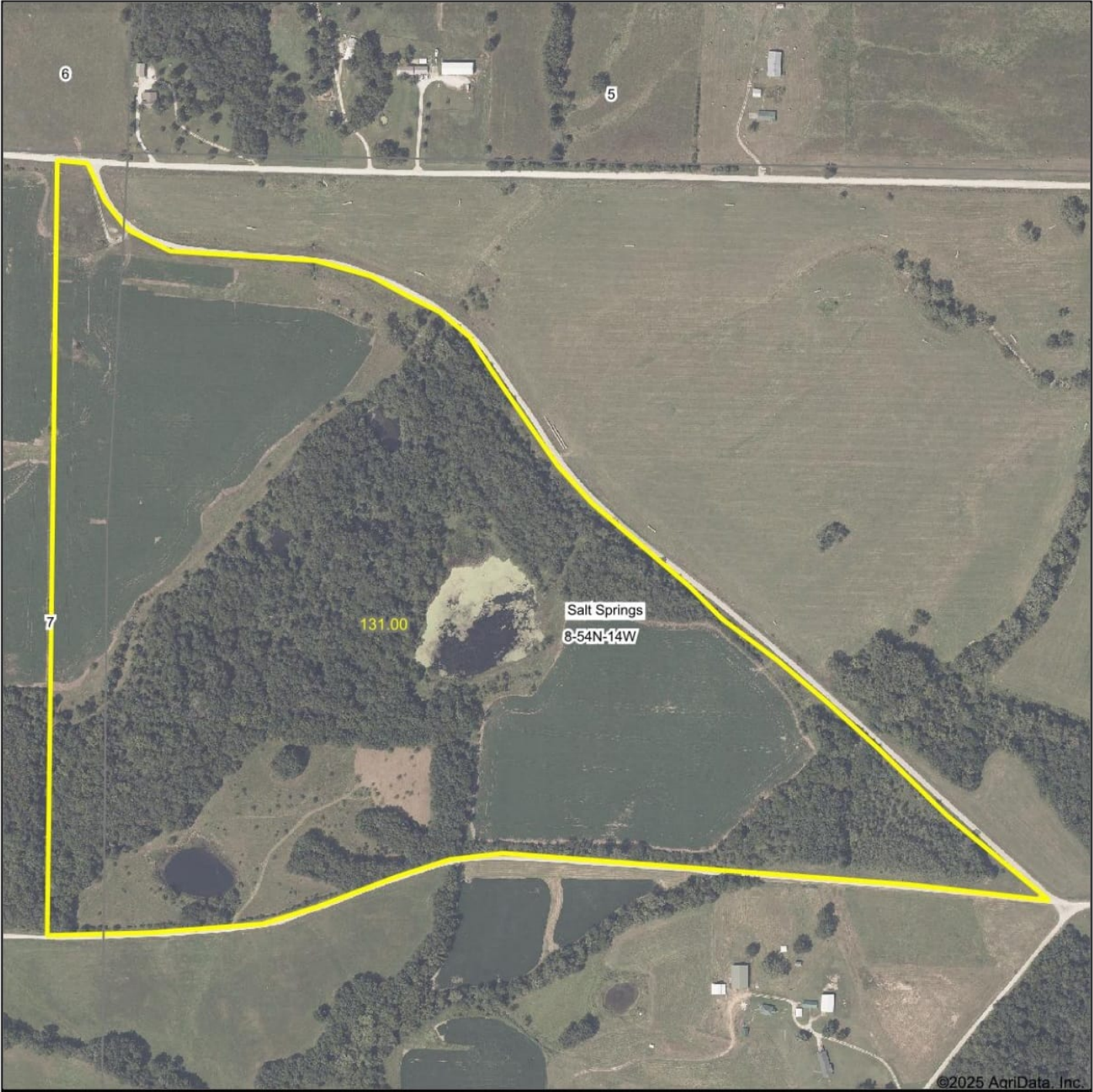
Maps Provided By:
 **surety**
CUSTOMIZED ONLINE MAPPING
© AgriData, Inc. 2023 www.AgriDataInc.com

8-54N-14W
Randolph County
Missouri

4/22/2025

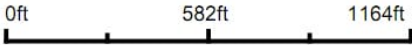
Field borders provided by Farm Service Agency as of 5/21/2008.

Aerial Map



©2025 AgriData, Inc.

Map Center: 39° 29' 40.83, -92° 30' 36.25

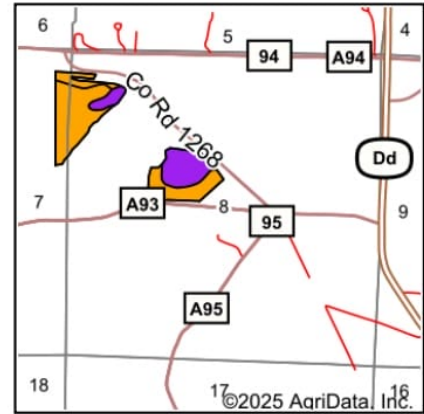
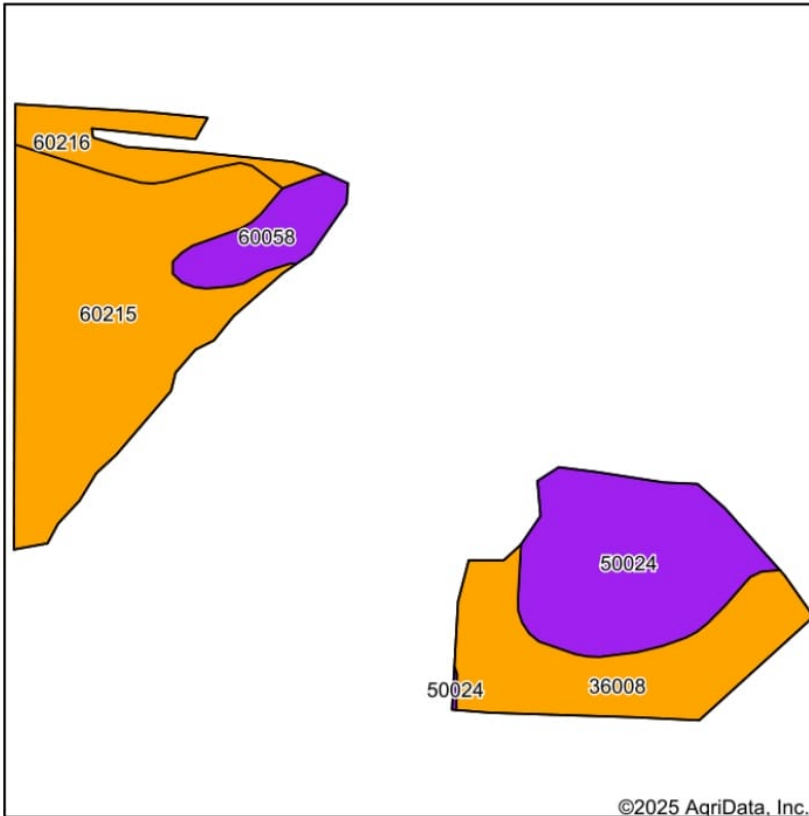


Maps Provided By:
 **surety**
CUSTOMIZED ONLINE MAPPING
© AgriData, Inc. 2023 www.AgriDataInc.com

8-54N-14W
Randolph County
Missouri

4/22/2025

Soils Map



State: **Missouri**
 County: **Randolph**
 Location: **8-54N-14W**
 Township: **Salt Springs**
 Acres: **44**
 Date: **4/22/2025**



Soils data provided by USDA and NRCS.

Area Symbol: MO175, Soil Area Version: 25														
Code	Soil Description	Acres	Percent of field	Non-Irr Class Legend	Non-Irr Class *c	Alfalfa hay Tons	Caucasian bluestem Tons	Common bermudagrass Tons	Corn Bu	Orchardgrass red clover Tons	Soybeans Bu	Tall fescue Tons	Warm season grasses Tons	*n NCCPI Soybeans
60215	Schuline clay loam, 3 to 9 percent slopes	18.06	41.0%		IIIe	7	8	7		7		7	8	59
50024	Gosport silt loam, 14 to 30 percent slopes, eroded	10.52	23.9%		VIe	4	6	4	7	5	2	5	6	24
36008	Bremer silt loam, 0 to 2 percent slopes, rarely flooded	9.13	20.8%		IIIw			8		7		8	8	69
60216	Schuline clay loam, 9 to 14 percent slopes	3.37	7.7%		IIIe	7	8	7		7		7	8	55
60058	Bethesda channery silt loam, 20 to 70 percent slopes	2.92	6.6%		VIIe									4
Weighted Average					3.98	4.4	5.3	6	1.7	6.1	0.5	6.3	7	*n 48.8

*n: The aggregation method is "Weighted Average using all components"

*c: Using Capabilities Class Dominant Condition Aggregation Method

Soils data provided by USDA and NRCS.



McKeown & Associates
2040 Silva Lane
Moberly, MO 65270
660-263-1789

"YOUR MOBERLY CONNECTION"

soldbygold@c21mckeown.com • c21mckeown.com

SERVICES OFFERED TO YOU FROM
CENTURY 21 McKEOWN & ASSOCIATES INC.:

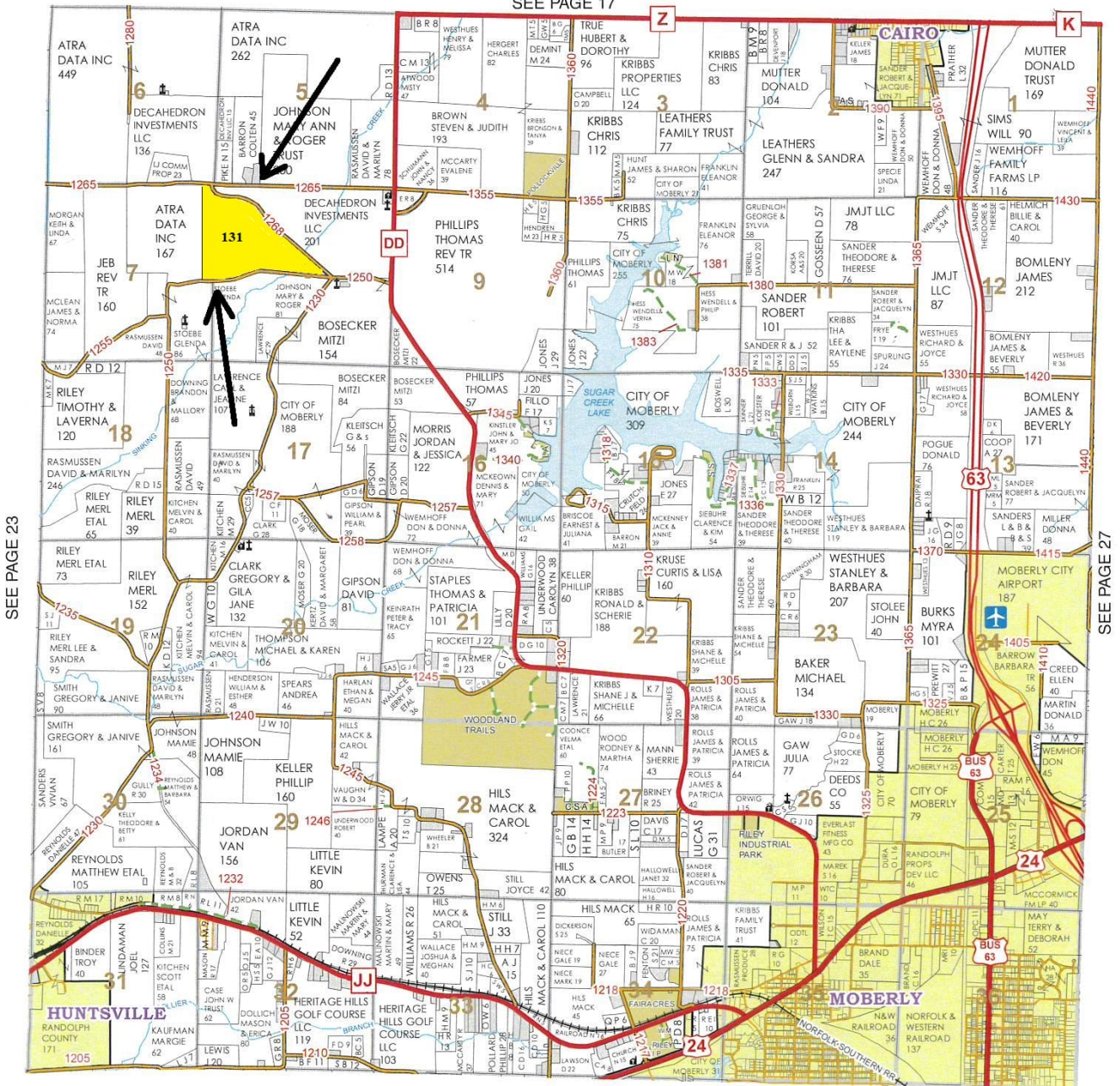
- *Buyers Agency *Sellers Agency *Property Management
- *Community Tours *Corporate Tours *Professional Advice
- *Broker Price Opinions *Builder Connections *Concierge Services



Township 54N - Range 14W

Copyright © 2018 Mapping Solutions

SEE PAGE 17



SEE PAGE 33