



MISSOURI Land & Farm

www.missourilandandfarm.com • Office: 660-258-3185 • Fax: 660-258-2082

103 Acres of Saline County Hunting/CRP

145th Road, Sweet Springs, MO 65351

Saline County

\$242,000



CONTACT:



JEFFREY QUINN

Broker

660-734-3925

jquinn@missourilandandfarm.com



Serious Whitetail Hunters know that when you find a large tract of big cover you will find bucks. When you find a place like this in MO you will find big ones.

If your looking for a whitetail heaven this place checks all the boxes:

Perfectly located on a Dead End Road!!!

Mature Timber & Dense Underbrush!!!

Tillable, CRP and Food plot acreages!!!

Salt Pond Creek Travel Corridor!!!

You will be hard pressed to find a better mix of desirable traits for Whitetails and Turkey.

The farm is bordered by WRP and parts of it lay favorably for waterfowl development with flooded marsh, flooded woods, and buck brush potential.

18.84 Acres have recently been signed up for CRP paying \$141/Acre of \$2656.44 in yearly income.

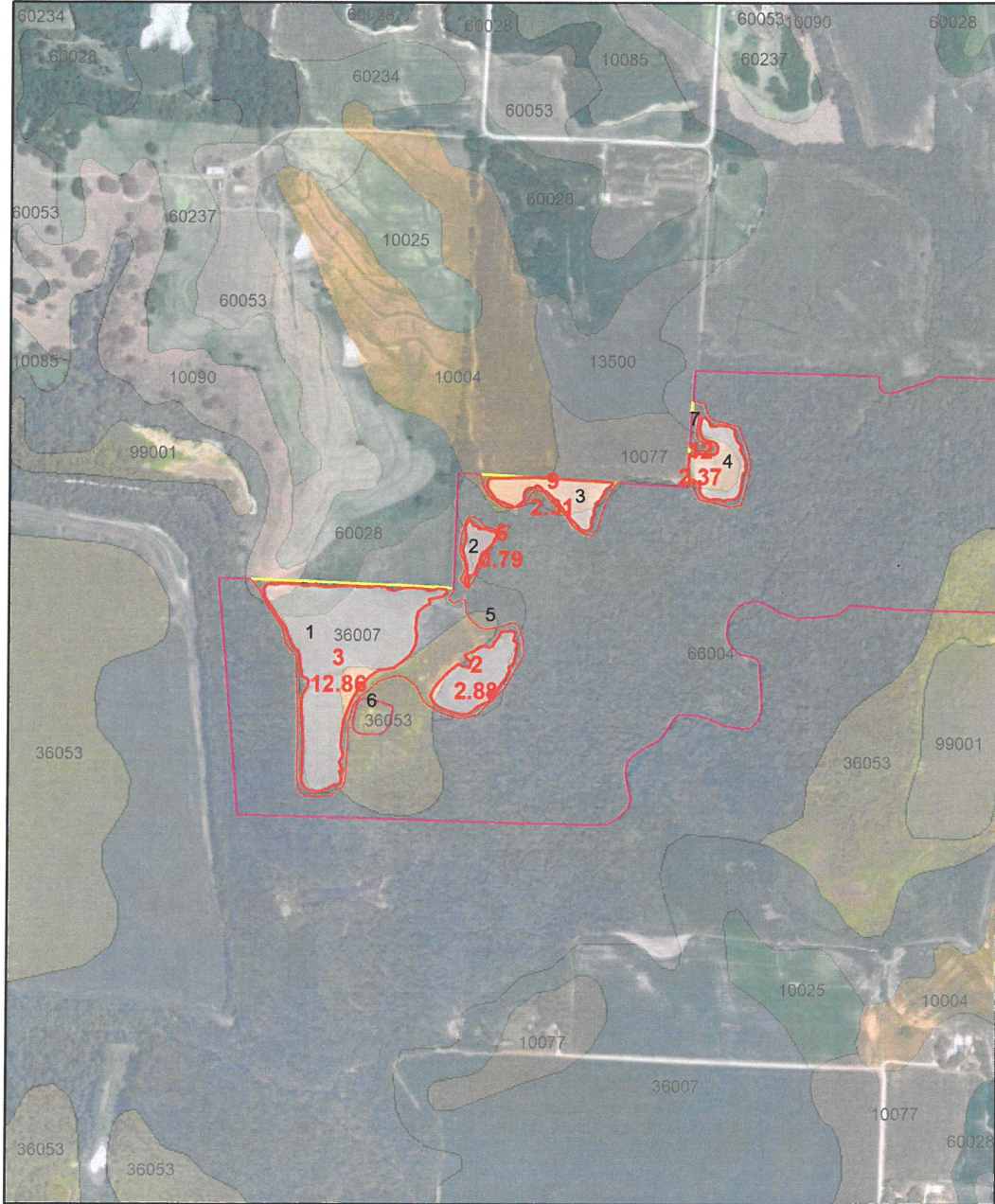
Farm lays less than 1 hour from KC

This is the perfect recreational farm with income. Call Jeff Quinn today 1-660-734-3925

Taxes: Approximately \$80

Scenario Map

Continuous Signup 53
 Scenario Name: MONTGOMERY (1)
 Tract: 330



#: Scenario ID
#.00: Scenario Acres
#: CLU Number

- Scenario_Polygon
- Cropland
- Not Cropland

Aerial Map



©2020 AgriData, Inc.

Map Center: 38° 59' 31.23, -93° 26' 16.09



34-49N-23W
Saline County
Missouri



11/5/2020

"We'll Keep You Warm"
 Farm • Home • Business
 "Our Prices Before Your
 Next Fill Up"

BRYAN'S PROPANE

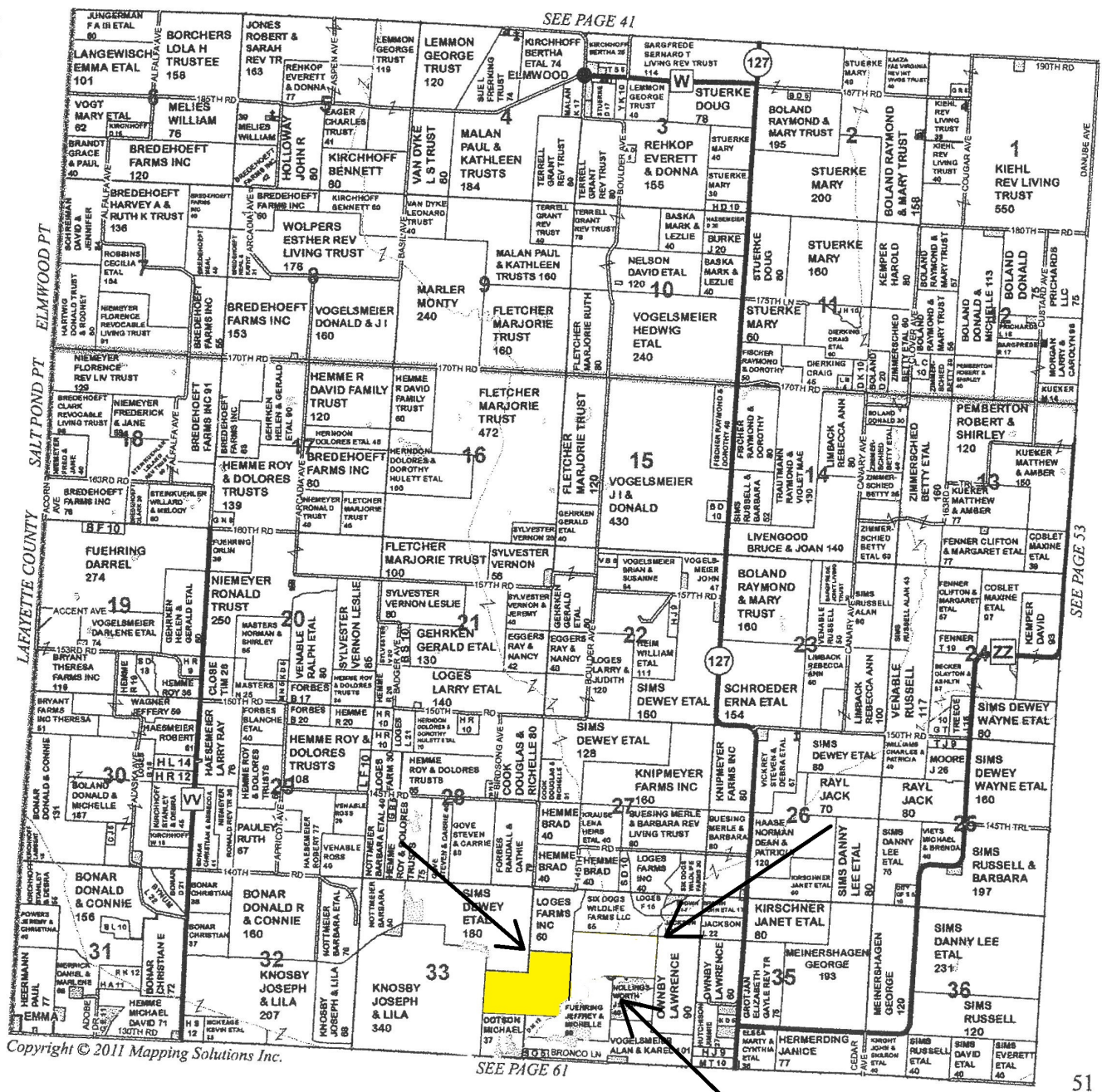
24 Hour Service
 Mon - Fri • 8 - 5
 Family Owned
 &
 Operated



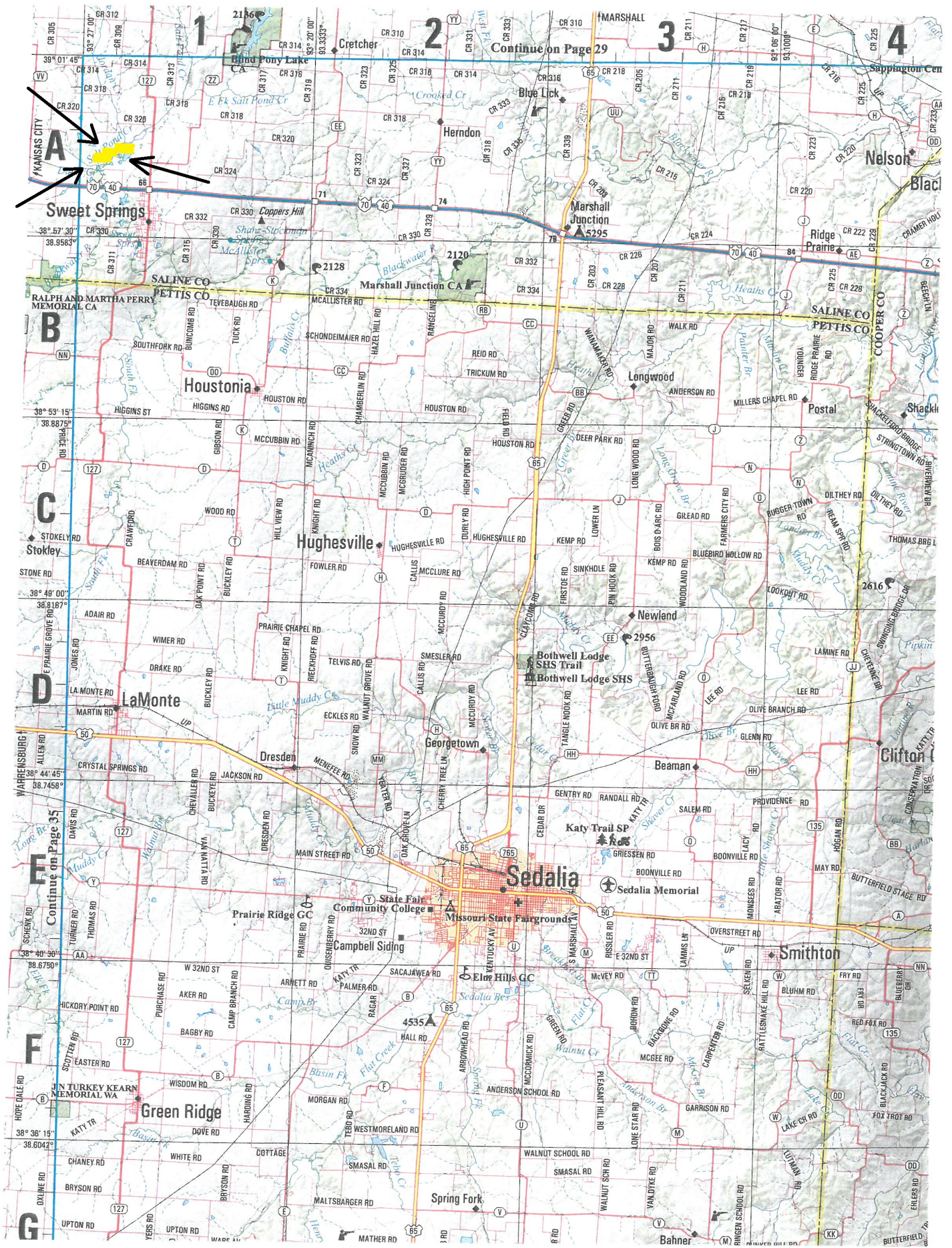
660-
886-5566

After Hours: 660-631-2371 • Cell Phone: 660-631-2371 • 612 N. Miami • Marshall

TOWNSHIP 49N • RANGE 23W



SEE PAGE 61



A

Sweet Springs

Continue on Page 29

B

Houstonia

C

D

E

F

G

SALINE CO
PETTIS CO

LaMonte

Green Ridge

Sedalia

Missouri State Fairgrounds

Campbell Siding

State Fair Community College

Elm Hills GC

Anderson School Rd

WALNUT SCHOOL RD

SMASAL RD

MATHER RD

Spring Fork

Bahner

RINGEN SCHOOL RD

WALNUT SCR RD

WANDYRE RD

WALNUT SCR RD

WALNUT SCR RD

WALNUT SCR RD

WALNUT SCR RD

WALNUT SCR RD

Bothwell Lodge SHS Trail

Bothwell Lodge SHS

Katy Trail SP

Sedalia Memorial

Boonville Rd

BOONVILLE RD

BOONVILLE RD

BOONVILLE RD

BOONVILLE RD

BOONVILLE RD

BOONVILLE RD

BOONVILLE RD

BOONVILLE RD

BOONVILLE RD

BOONVILLE RD

BOONVILLE RD

BOONVILLE RD

BOONVILLE RD

BOONVILLE RD

BOONVILLE RD

BOONVILLE RD

BOONVILLE RD

BOONVILLE RD

BOONVILLE RD

BOONVILLE RD

BOONVILLE RD

Smithton

SMITHTON

SMITHTON

SMITHTON

SMITHTON

SMITHTON

SMITHTON

SMITHTON

SMITHTON

SMITHTON

SMITHTON

SMITHTON

SMITHTON

SMITHTON

SMITHTON

SMITHTON

SMITHTON

Clifton

CLIFTON

CLIFTON

CLIFTON

CLIFTON

CLIFTON

CLIFTON

CLIFTON

CLIFTON

CLIFTON

CLIFTON

CLIFTON

CLIFTON

CLIFTON

CLIFTON

CLIFTON

CLIFTON

Beaman

BEAMAN

BEAMAN

BEAMAN

BEAMAN

BEAMAN

BEAMAN

BEAMAN

BEAMAN

BEAMAN

BEAMAN

BEAMAN

BEAMAN

BEAMAN

BEAMAN

BEAMAN

BEAMAN

BEAMAN

BEAMAN

BEAMAN

BEAMAN

BEAMAN

BEAMAN

BEAMAN

BEAMAN

BEAMAN

BEAMAN

BEAMAN

BEAMAN

BEAMAN

BEAMAN

BEAMAN

BEAMAN

BEAMAN

BEAMAN

BEAMAN

BEAMAN

BEAMAN

BEAMAN

BEAMAN

BEAMAN

BEAMAN

BEAMAN

BEAMAN

BEAMAN

BEAMAN

BEAMAN

BEAMAN

BEAMAN

BEAMAN

BEAMAN

BEAMAN

BEAMAN

BEAMAN

BEAMAN

BEAMAN

BEAMAN

BEAMAN

BEAMAN

BEAMAN

BEAMAN

BEAMAN

BEAMAN

BEAMAN

BEAMAN

BEAMAN

BEAMAN

BEAMAN

BEAMAN

BEAMAN

BEAMAN

BEAMAN

BEAMAN

BEAMAN

BEAMAN

BEAMAN

BEAMAN

BEAMAN

BEAMAN

BEAMAN

BEAMAN

BEAMAN

BEAMAN

BEAMAN

BEAMAN

BEAMAN

BEAMAN

BEAMAN

BEAMAN

BEAMAN

BEAMAN

BEAMAN

BEAMAN

BEAMAN

BEAMAN

BEAMAN

BEAMAN

BEAMAN

BEAMAN

BEAMAN

BEAMAN

BEAMAN

BEAMAN

BEAMAN

BEAMAN

BEAMAN

BEAMAN

BEAMAN

BEAMAN

BEAMAN

BEAMAN

BEAMAN

BEAMAN

BEAMAN

BEAMAN

BEAMAN

BEAMAN

BEAMAN

BEAMAN

BEAMAN

BEAMAN

BEAMAN

BEAMAN

BEAMAN

BEAMAN

BEAMAN

BEAMAN

BEAMAN

BEAMAN

BEAMAN

BEAMAN

BEAMAN

BEAMAN

BEAMAN

BEAMAN

BEAMAN

BEAMAN

BEAMAN

BEAMAN

BEAMAN

BEAMAN

BEAMAN

BEAMAN

BEAMAN

BEAMAN

BEAMAN

BEAMAN

BEAMAN

BEAMAN

BEAMAN

BEAMAN

BEAMAN

BEAMAN

BEAMAN

BEAMAN

BEAMAN

BEAMAN

BEAMAN

BEAMAN

BEAMAN

BEAMAN

BEAMAN

BEAMAN

BEAMAN

BEAMAN

BEAMAN

BEAMAN

BEAMAN

BEAMAN

BEAMAN

BEAMAN

BEAMAN

BEAMAN

BEAMAN

BEAMAN

BEAMAN

BEAMAN

BEAMAN

BEAMAN

BEAMAN

BEAMAN

BEAMAN

BEAMAN

BEAMAN

BEAMAN

BEAMAN

BEAMAN

BEAMAN

BEAMAN

BEAMAN

BEAMAN

BEAMAN

BEAMAN

BEAMAN

BEAMAN

BEAMAN

BEAMAN

BEAMAN

BEAMAN

BEAMAN

BEAMAN

BEAMAN

BEAMAN

BEAMAN

BEAMAN

BEAMAN

BEAMAN

BEAMAN

BEAMAN

BEAMAN

BEAMAN

BEAMAN

BEAMAN

BEAMAN

BEAMAN

BEAMAN

BEAMAN

BEAMAN

BEAMAN

BEAMAN

BEAMAN

BEAMAN

BEAMAN

BEAMAN

BEAMAN

BEAMAN

BEAMAN

BEAMAN

BEAMAN

BEAMAN

BEAMAN

BEAMAN