



MISSOURI Land & Farm

www.missourilandandfarm.com • Office: 660-258-3185 • Fax: 660-258-2082

17.4 Acre Waterfowl Potential – Grand Pass Proximity!!

Co Road 413, Malta Bend, MO 65339

Saline, Co.

\$89,800



CONTACT:



DAVE ATKINSON

Sales & Auctioneer

660-788-3333

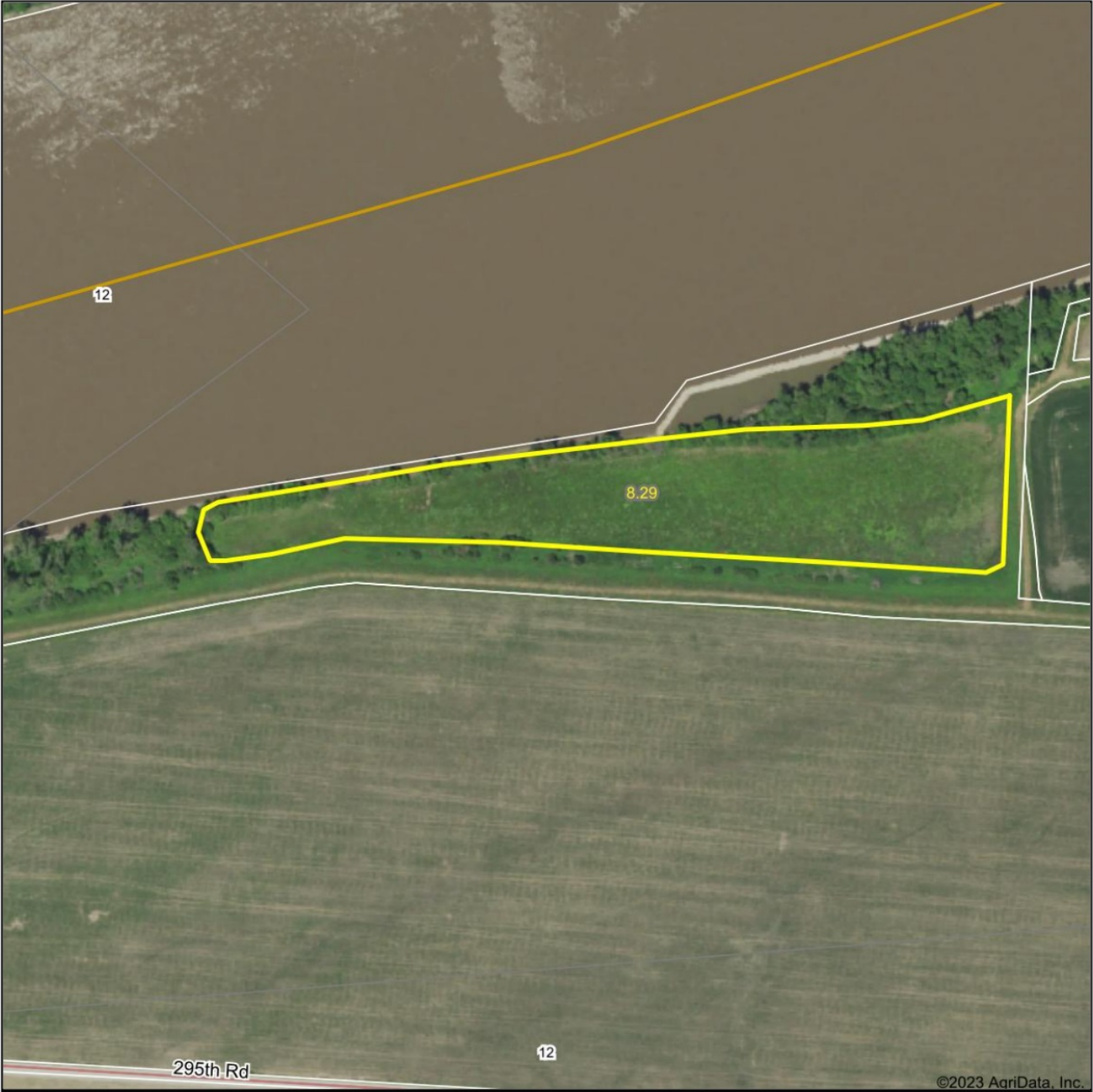
datkinson@missourilandandfarm.com



There simply aren't many chances that present themselves when it comes to purchasing a small, affordable farm in a highly sought after agricultural area. It just so happens that this 17.4 surveyed acre farm near Malta Bend offers that opportunity PLUS excellent hunting potential. In addition to the whitetail hunting that the banks of the Missouri River has become famous for, this tract also provides excellent access, a campsite / landing pad, and river / fishing access. Just over 3 miles down river as the duck flies from the largest migratory focal point in the Mississippi Flyway, Grand Pass Conservation Area, this farm and the 8 acre tillable or open acreage could be a great small waterfowl development to utilize the duck traffic up and down the river. In times of bitter cold, the stretch of river bordering the property annually sees one of the largest congregations of mallards in the world.

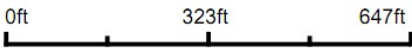
If you have interest in this property near Malta Bend, contact Dave Atkinson with Missouri land and farm at 660-788-3333

Aerial Map



©2023 AgriData, Inc.

Map Center: 39° 13' 35.71, -93° 22' 56.24

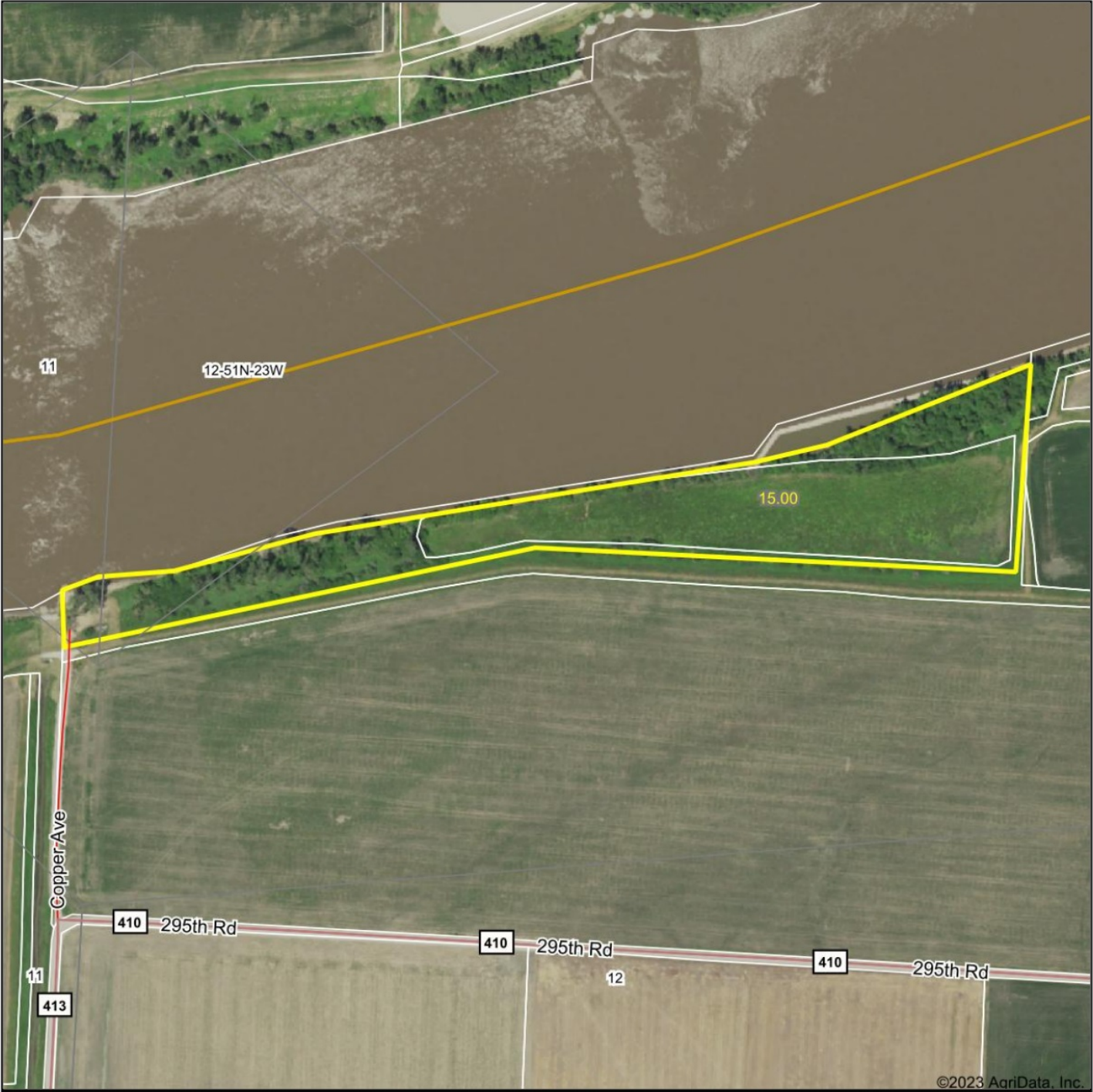


Maps Provided By:
 **surety**
CUSTOMIZED ONLINE MAPPING
© AgriData, Inc. 2021 www.AgriDataInc.com

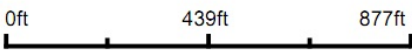
Saline County
Missouri

Field borders provided by Farm Service Agency as of 5/21/2008.

Aerial Map



Map Center: 39° 13' 35.71, -93° 23' 0.8



Maps Provided By:
 **surety**
CUSTOMIZED ONLINE MAPPING
© AgriData, Inc. 2021 www.AgriDataInc.com

Saline County
Missouri

Field borders provided by Farm Service Agency as of 5/21/2008.

Topography Contours



©2023 AgriData, Inc.

Source: USGS 3 meter dem

Interval(ft): 1.0

Min: 648.6

Max: 661.8

Range: 13.2

Average: 657.7

Standard Deviation: 1.97 ft

0ft 322ft 644ft



1/12/2023

Saline County
Missouri

Map Center: 39° 13' 35.71, -93° 22' 56.24

Maps Provided By



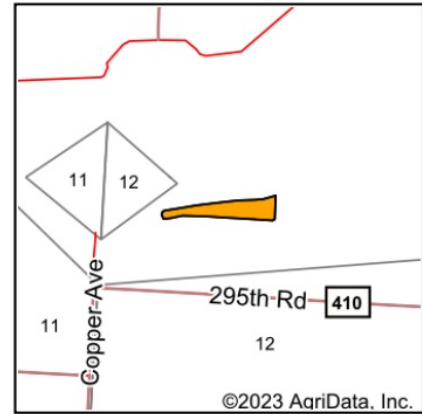
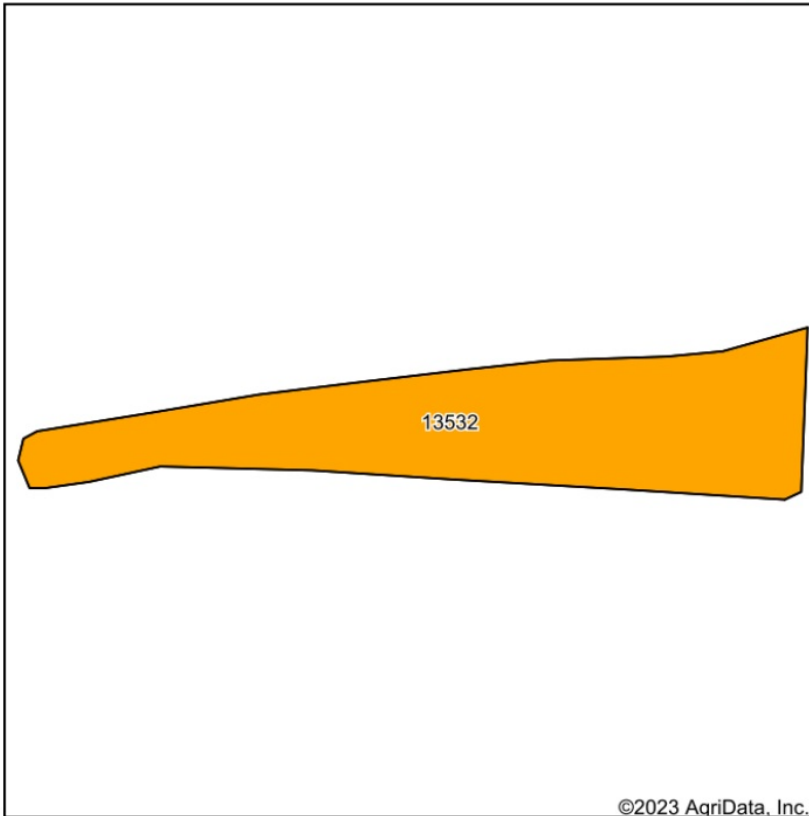
CUSTOMIZED ONLINE MAPPING

© AgriData, Inc. 2021

www.AgriDataInc.com

Field borders provided by Farm Service Agency as of 5/21/2008.

Soils Map



State: **Missouri**
 County: **Saline**
 Location: **39° 13' 35.71, -93° 22' 56.24**
 Township: **Grand Pass**
 Acres: **8.29**
 Date: **1/12/2023**

Maps Provided By

 CUSTOMIZED ONLINE MAPPING
 © AgriData, Inc. 2021 www.AgriDataInc.com



Soils data provided by USDA and NRCS.

Area Symbol: MO195, Soil Area Version: 24										
Code	Soil Description	Acres	Percent of field	Non-Irr Class Legend	Non-Irr Class *c	Common bermudagrass Tons	Orchardgrass red clover Tons	Tall fescue Tons	Warm season grasses Tons	*n NCCPI Soybeans
13532	Haynie-Waldron complex, 0 to 2 percent slopes, occasionally flooded	8.29	100.0%		Ilw	7	8	8	9	50
Weighted Average					2.00	7	8	8	9	*n 50

*n: The aggregation method is "Weighted Average using all components"

*c: Using Capabilities Class Dominant Condition Aggregation Method

Soils data provided by USDA and NRCS.



BARTLETT AND COMPANY



CEN

CARROLLTON
(660) 542-2997

WAVERLY
(660) 493-2294
800-289-2294

HIGGINSVILLE
(660) 584-2222

TITLE

Phone: (660)

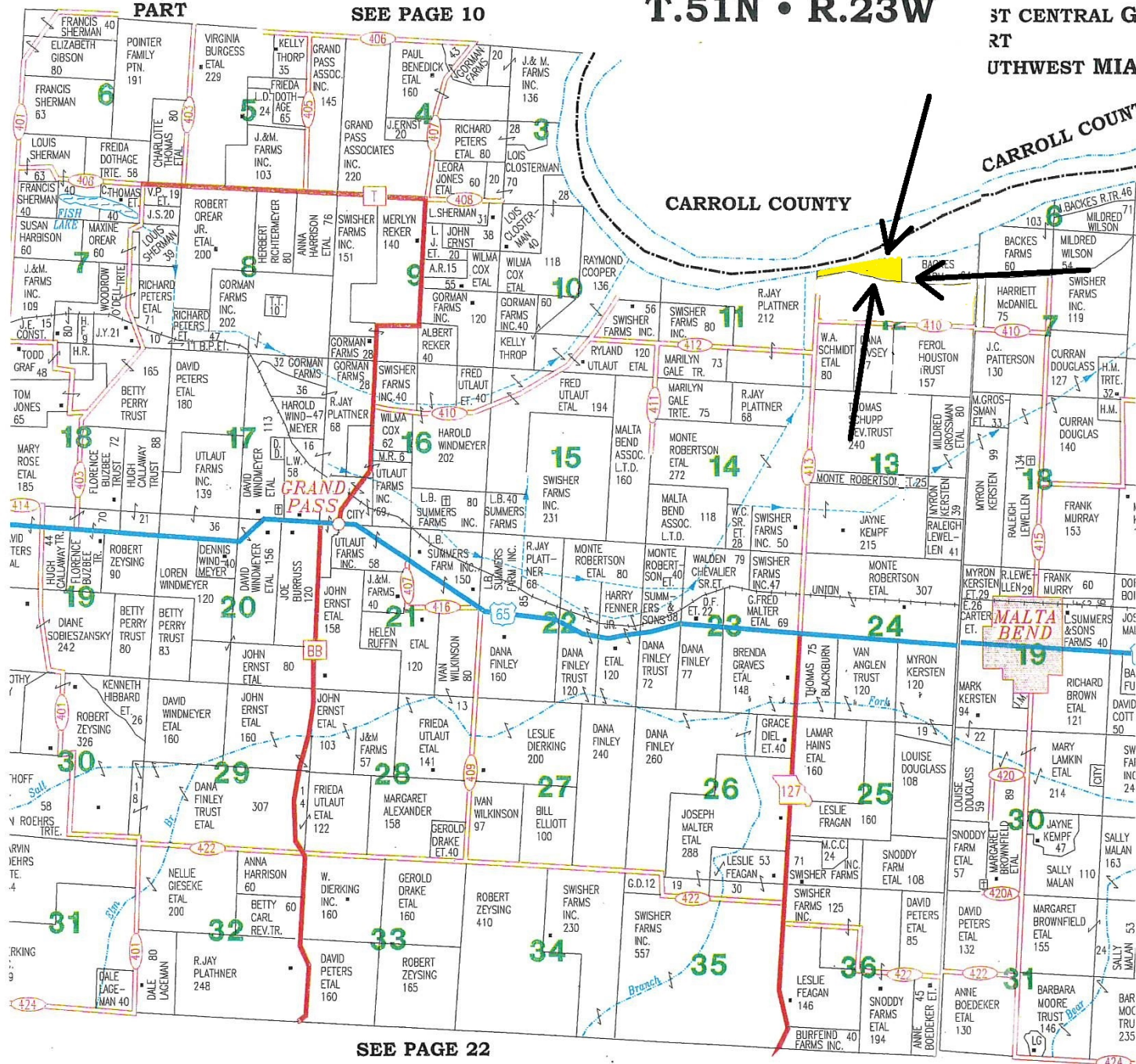
WEST CENTRAL GRAND PASS

PART

SEE PAGE 10

T.51N • R.23W

ST CENTRAL G
RT
UTHWEST MIA



SEE PAGE 22

RIGHTED 1999 MILLER MANAGEMENT SERVICES, INC.

