



MISSOURI Land & Farm

www.missourilandandfarm.com • Office: 660-258-3185 • Fax: 660-258-2082

152 Acres Wildlife Sanctuary!!

Apricot Ave, Lingo, MO 64631

Macon County

\$729,600



CONTACT:



JEFFREY QUINN

Broker

660-734-3925

jquinn@missourilandandfarm.com



Not all farms are created equal. Not all of them are capable of producing big bucks. Its definitely not everyday that one hits the open market. Today is that day.

This area has been a proven big buck producing area for years, and now here is an opportunity to get the farm you've always wanted.

This area is rich with Whitetail history and plenty of Turkeys.

Secluded access will make this property hunt bigger and keep the traffic down.

There is a couple nice food plot locations.

53 open acres are a blank slate to increase the food source or bedding. Food plots, Alfalfa Fields, or Switch Grass would all help create a wildlife heaven.

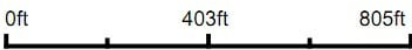
More open acres are available if desired.

Call, Text, or Email Jeff Quinn today for more information 660-734-3925.

Aerial Map



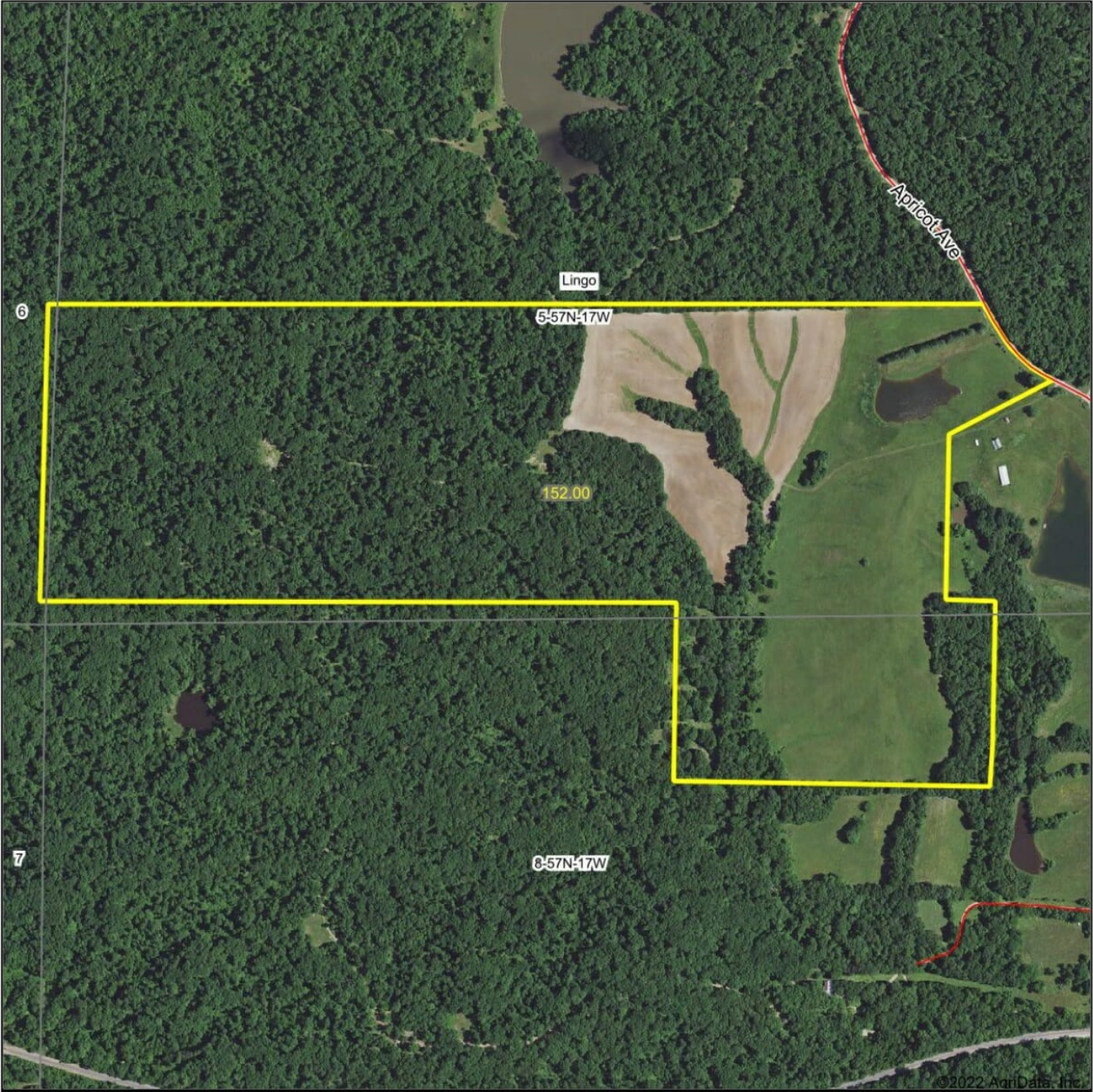
Map Center: 39° 46' 26.11, -92° 49' 38.23



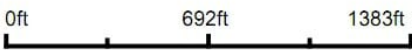
5-57N-17W
Macon County
Missouri



Aerial Map



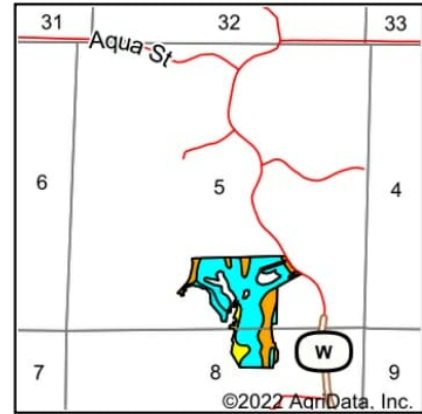
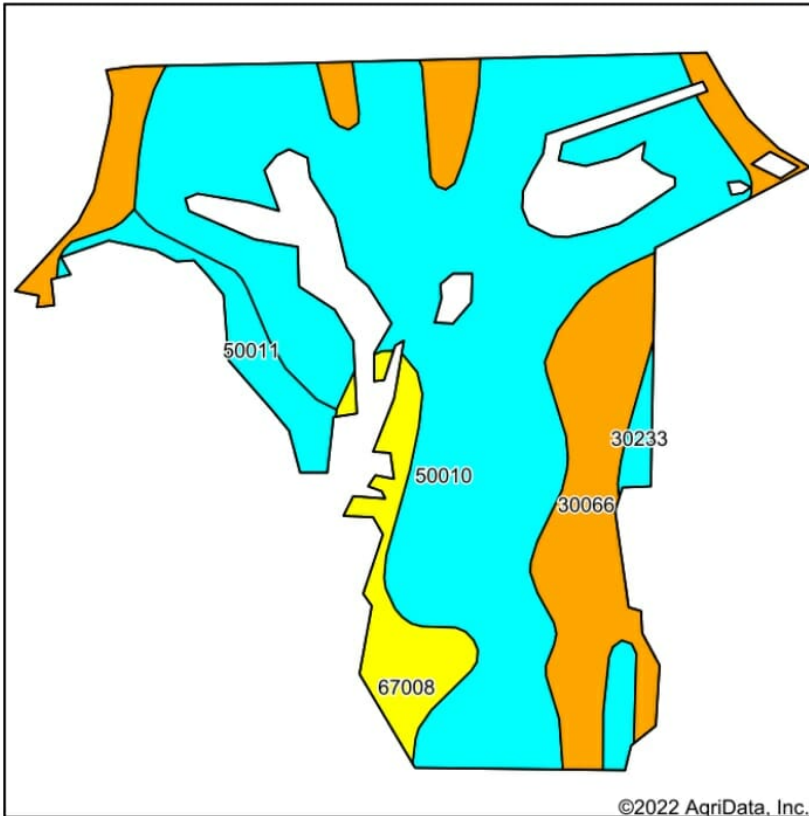
Map Center: 39° 46' 24.82, -92° 49' 51.15



5-57N-17W
Macon County
Missouri



Soils Map



State: **Missouri**
 County: **Macon**
 Location: **5-57N-17W**
 Township: **Lingo**
 Acres: **52.91**
 Date: **6/16/2022**

Maps Provided By

 CUSTOMIZED ONLINE MAPPING
 © AgriData, Inc. 2021 www.AgriDataInc.com



Soils data provided by USDA and NRCS.

| Area Symbol: MO121, Soil Area Version: 23 | | | | | | | | | | | | |
|---|---|-------|------------------|----------------------|------------------|------------------|-------------------------|--------------------------|------------------------------|------------------|--------------------------|-------------------|
| Code | Soil Description | Acres | Percent of field | Non-Irr Class Legend | Non-Irr Class *c | Alfalfa hay Tons | Caucasian bluestem Tons | Common bermudagrass Tons | Orchardgrass red clover Tons | Tall fescue Tons | Warm season grasses Tons | *n NCCPI Soybeans |
| 50010 | Winnegan loam, 14 to 20 percent slopes, eroded | 34.83 | 65.8% | | Vle | 5 | 8 | 7 | 8 | 7 | 8 | 40 |
| 30066 | Gorin silt loam, 2 to 5 percent slopes | 11.81 | 22.3% | | Ile | 5 | 8 | 7 | 8 | 7 | 8 | 66 |
| 67008 | Wilbur silt loam, 1 to 3 percent slopes, frequently flooded | 3.42 | 6.5% | | Illw | | | 8 | 9 | 8 | 10 | 63 |
| 50011 | Winnegan loam, 20 to 35 percent slopes | 2.29 | 4.3% | | Vle | 5 | 8 | 7 | 8 | 7 | 8 | 7 |
| 30233 | Keswick clay loam, 9 to 20 percent slopes, severely eroded | 0.56 | 1.1% | | Vle | 5 | 8 | 7 | 8 | 7 | 8 | 31 |
| Weighted Average | | | | | 4.91 | 4.7 | 7.5 | 7.1 | 8.1 | 7.1 | 8.1 | *n 45.8 |

*n: The aggregation method is "Weighted Average using all components"

*c: Using Capabilities Class Dominant Condition Aggregation Method

Soils data provided by USDA and NRCS.



Lingo Township 16

T-57-N R-17-W

See Page 42

