



# MISSOURI Land & Farm

www.missourilandandfarm.com • Office: 660-258-3185 • Fax: 660-258-2082

**193 Acres Chariton Co. (Deer, Turkey,  
Geese, Small Game)**

**Hickory Grove Road / Powell Ave**

**Chariton County**

**\$3,000**



**CONTACT:**



**JEFFREY QUINN**

Broker

660-734-3925

[jquinn@missourilandandfarm.com](mailto:jquinn@missourilandandfarm.com)

Great spot for some of the famous Giant Whitetails Chariton County has been know to hold!!

With great travel corridors this farm has produced several nice deer in the past and will continue.

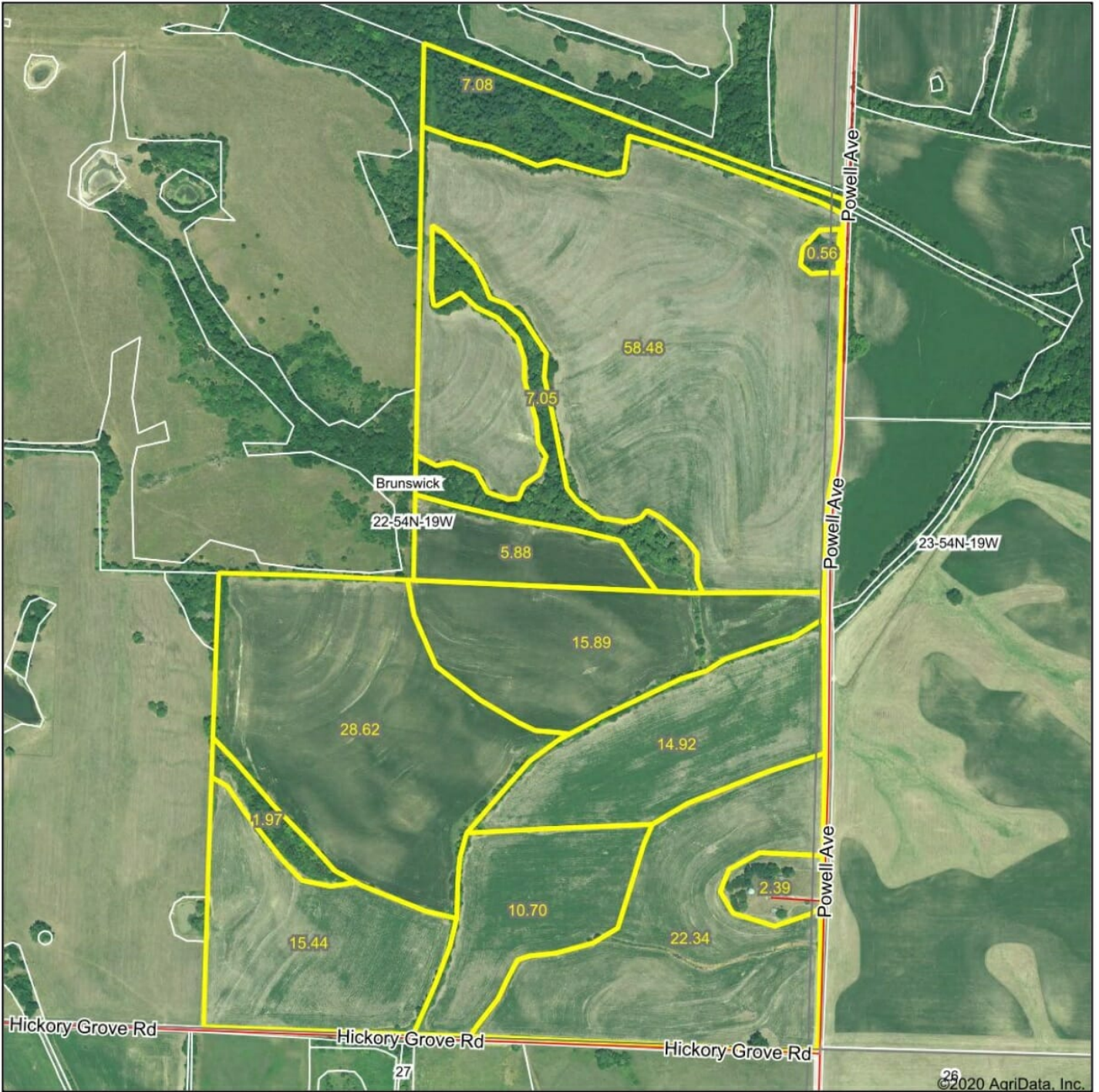
This row crop farm surrounded by several pasture farms is sure to be the desired food source in the area.

Great spot for a camper.

Currently looking for a lease from today thru Muzzle loader season Jan 5, 2021.

Also looking for a \$3000 Lease for 2021 Hunting Season.

# Aerial Map



©2020 AgriData, Inc.

Map Center: 39° 28' 19.17, -93° 1' 18.82



**22-54N-19W**  
**Chariton County**  
**Missouri**

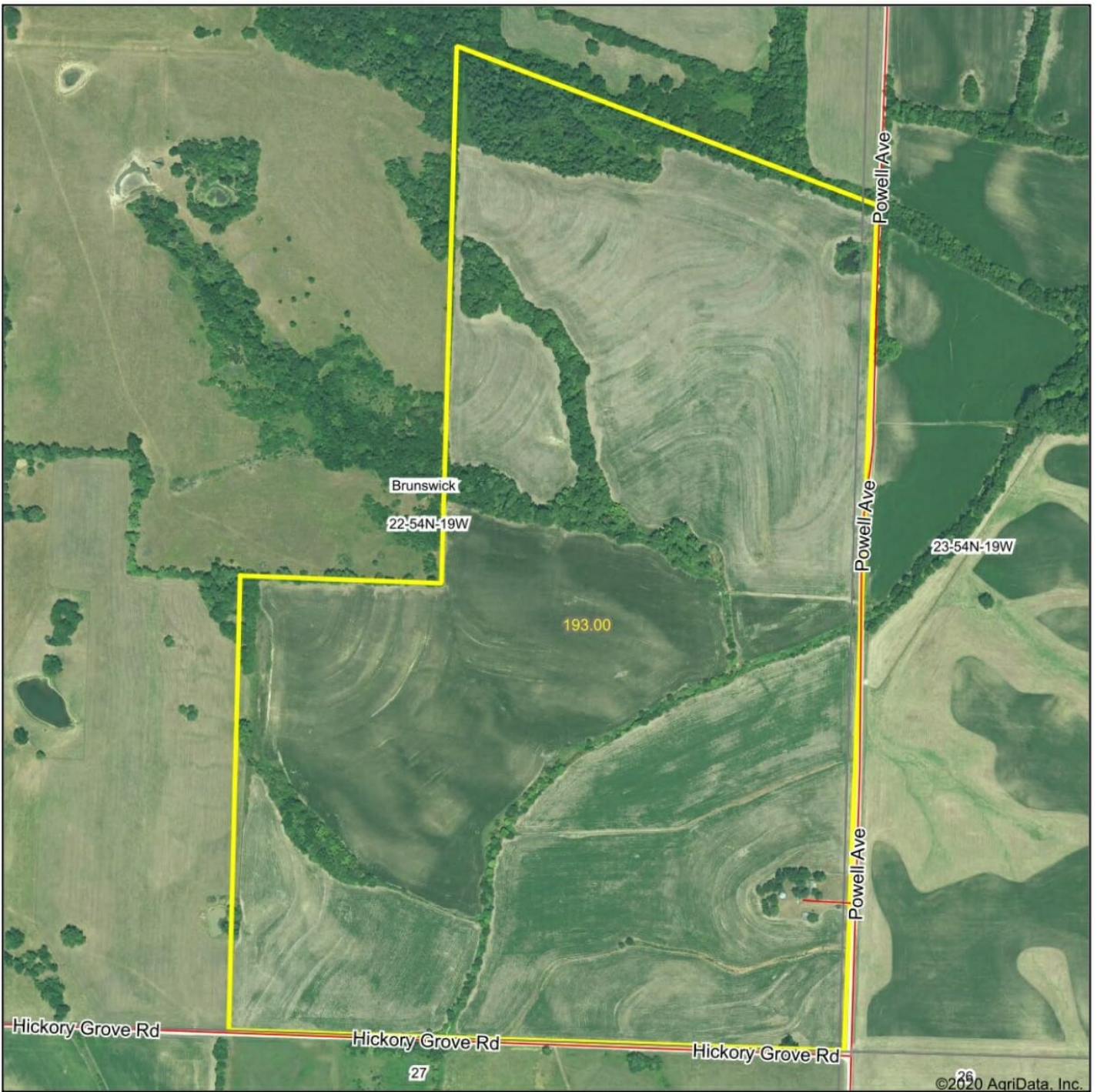


9/3/2020

Maps Provided By:  
 **surety**  
CUSTOMIZED ONLINE MAPPING  
© AgriData, Inc. 2020 www.AgridataInc.com

Field borders provided by Farm Service Agency as of 5/21/2008.

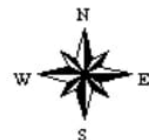
# Aerial Map



Map Center: 39° 28' 19.23, -93° 1' 20.55

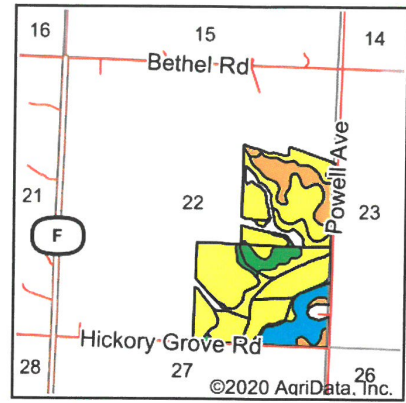
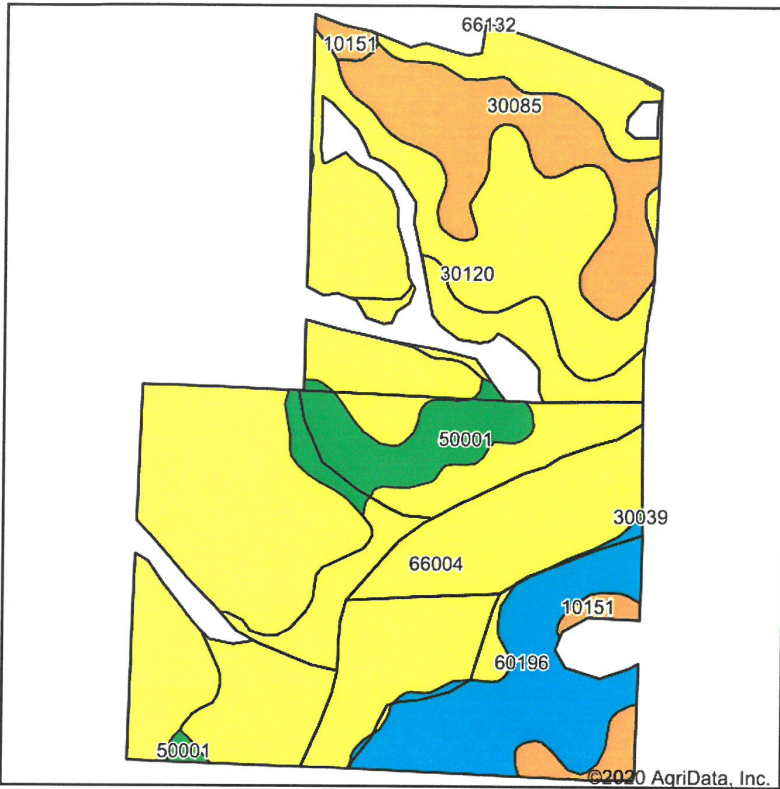


**22-54N-19W**  
**Chariton County**  
**Missouri**



9/21/2020

# Soils Map



State: **Missouri**  
 County: **Chariton**  
 Location: **22-54N-19W**  
 Township: **Brunswick**  
 Acres: **172.27**  
 Date: **9/3/2020**

Maps Provided By  
  
 CUSTOMIZED ONLINE MAPPING  
 © AgriData, Inc. 2020 www.AgriDataInc.com



Soils data provided by USDA and NRCS.

Area Symbol: MO041, Soil Area Version: 23

Code	Soil Description	Acres	Percent of field	Non-Irr Class Legend	Non-Irr Class *c	Alfalfa hay	Caucasian bluestem	Common bermudagrass	Cor n	Grain sorghum	Orchardgrass red clover	Soybeans	Tall fescue	Warm season grasses	Winter wheat	*1 S
30120	Lagonda silty clay loam, 5 to 9 percent slopes, eroded	70.94	41.2%		IIIe	5	8	7			8		7	8		
66004	Dockery silt loam, 0 to 2 percent slopes, frequently flooded	51.30	29.8%		IIIw			8	5	4	9	1	8	10	2	
60196	Newcomer loam, 9 to 14 percent slopes, eroded	18.42	10.7%		VIe	4	7	4			6		5	7		
30085	Grundy silt loam, 2 to 5 percent slopes	17.06	9.9%		Ile											
50001	Armstrong loam, 5 to 9 percent slopes, eroded	10.04	5.8%		IVe											
10151	Wakenda silt loam, 2 to 5 percent slopes	4.51	2.6%		Ile	7	8	7			7		7	8		
<b>Weighted Average</b>						<b>2.7</b>	<b>4.3</b>	<b>5.9</b>	<b>1.5</b>	<b>1.2</b>	<b>6.8</b>	<b>0.3</b>	<b>6</b>	<b>7.2</b>	<b>0.6</b>	

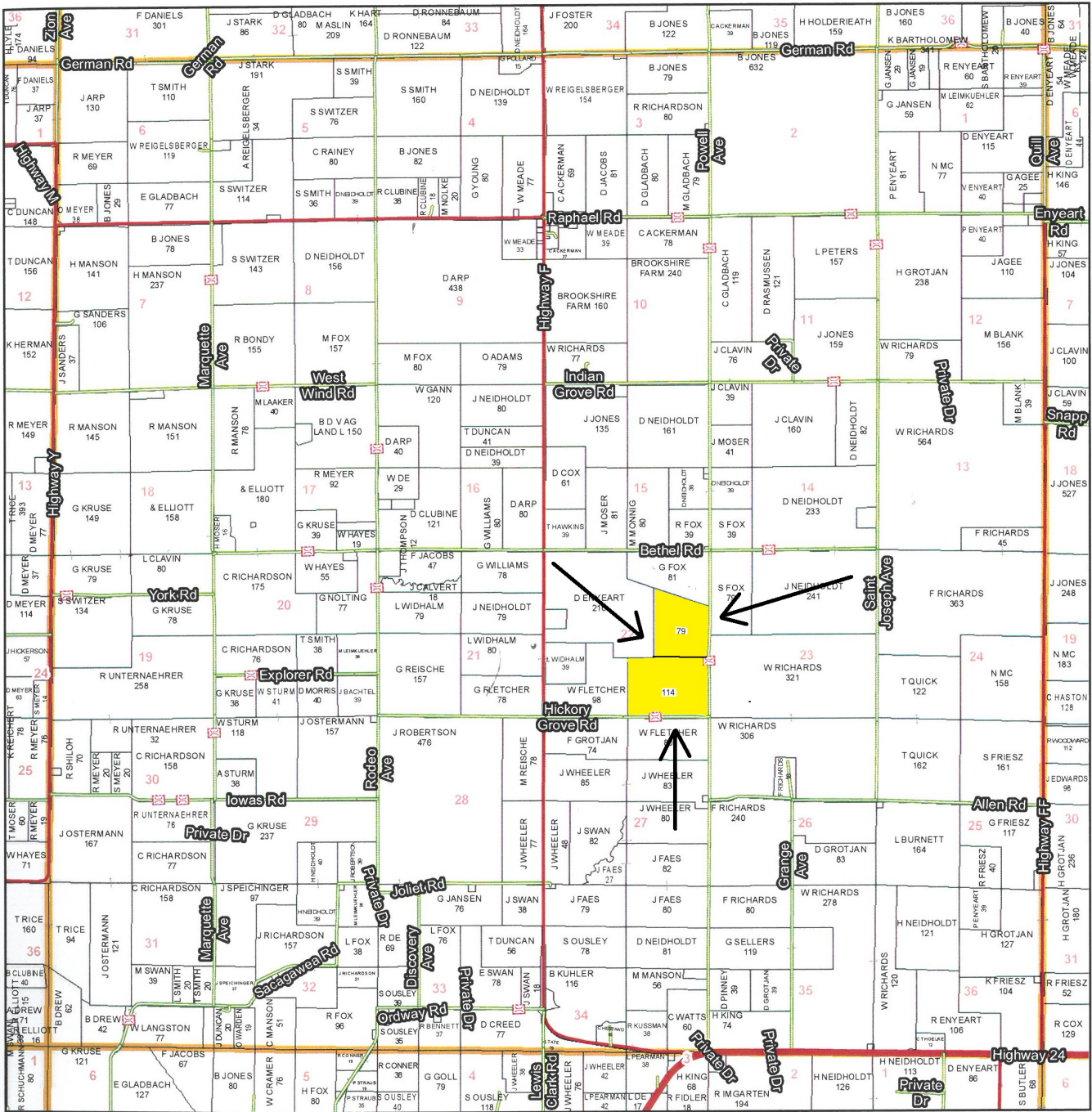
\*n: The aggregation method is "Weighted Average using all components"

\*c: Using Capabilities Class Dominant Condition Aggregation Method

Soils data provided by USDA and NRCS.

# T54N - R19W

See Page 27



See Page 37

See Page 41

See Page 51

**Chariton County Commission**  
 Tony McCollum - Presiding Commissioner  
 Danny Price - Western District Commissioner  
 Steve Atkinson - Eastern District Commissioner

Data Courtesy Chariton County  
 Geographic Information System  
 Darrin Gladbach - Assessor

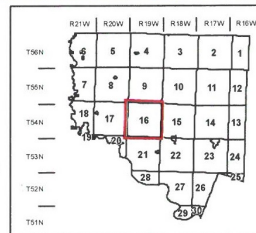
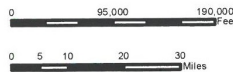
This data was primarily developed for tax purposes and is not considered survey accurate.

Most parcels > 10 ac labeled

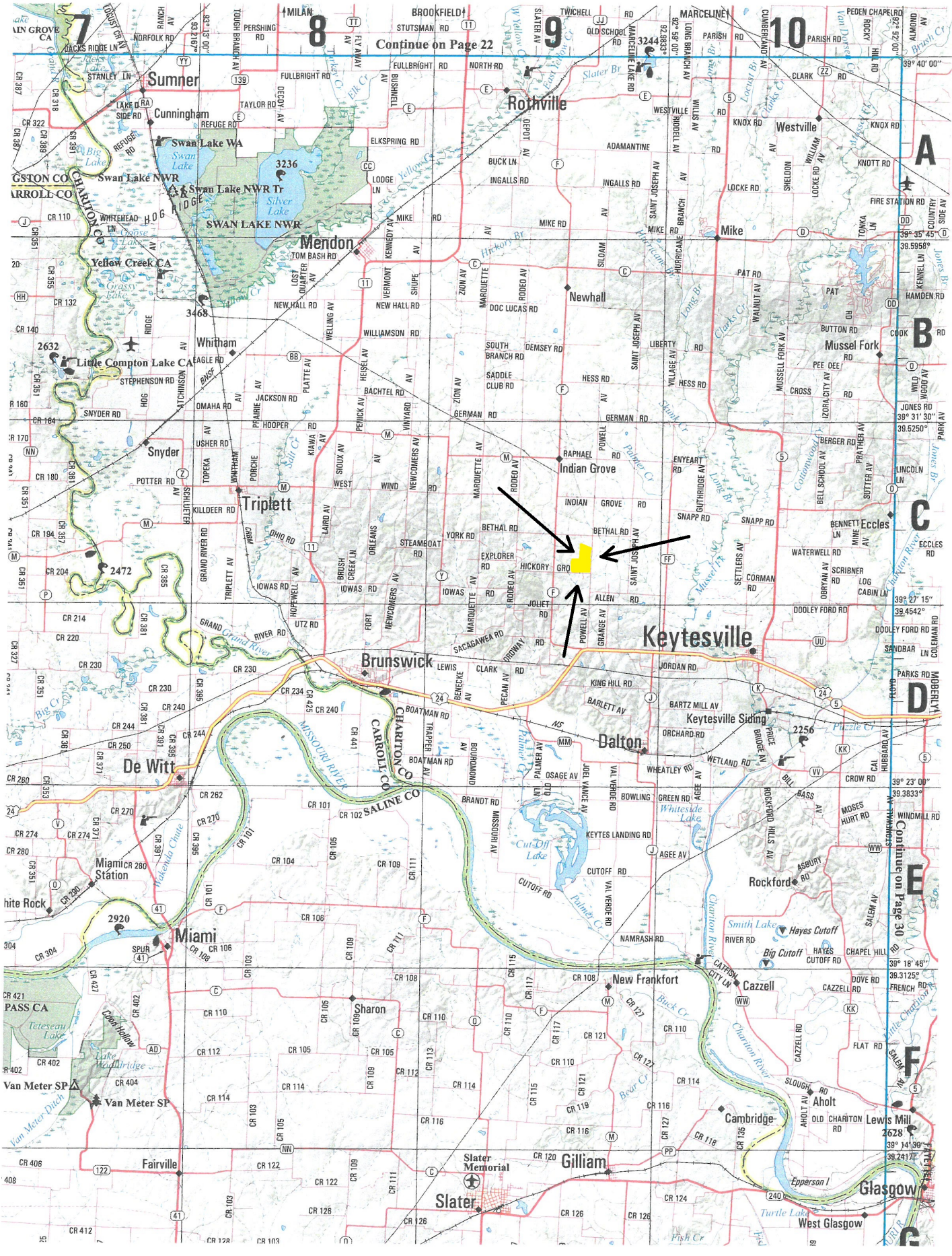
GIS & Map Development By:



© Copyright Chanton County, MO



Legend	
	City Limits
	Township-Range
	Sections
	Land Grant
	Political Township
	Land Ownership
	Subdivisions
	Conservation & US
	US Highways
	ST Highways
	CO Highways
	Streets
	Rail Roads
	Streams
	Land Hooks
	Bridges



Continue on Page 22

Continue on Page 30

Sumner

Rothville

Westville

Mendon

Newhall

Mike

Whitham

Indian Grove

Eccles

Triplet

Keytesville

Brunswick

Dalton

De Witt

Rockford

Miami

New Frankfort

Cazzell

Van Meter

Slater

Gilliam

Glasgow

Fairville

West Glasgow