



MISSOURI Land & Farm

www.missourilandandfarm.com • Office: 660-258-3185 • Fax: 660-258-2082

231 Acre Prime Missouri River Bottom Farm (4%)!!

Co Road 394, Amazonia, MO

Andrew County

\$1,250,000



CONTACT:



JEFFREY QUINN

Broker

660-734-3925

jquinn@missourilandandfarm.com

This Missouri River Bottom farm has some of the highly coveted class 1 soil that we hardly ever see!!

70 Acres of class 1 Haynie Soils

150 Acres of Class 2 Leta Silty Soils

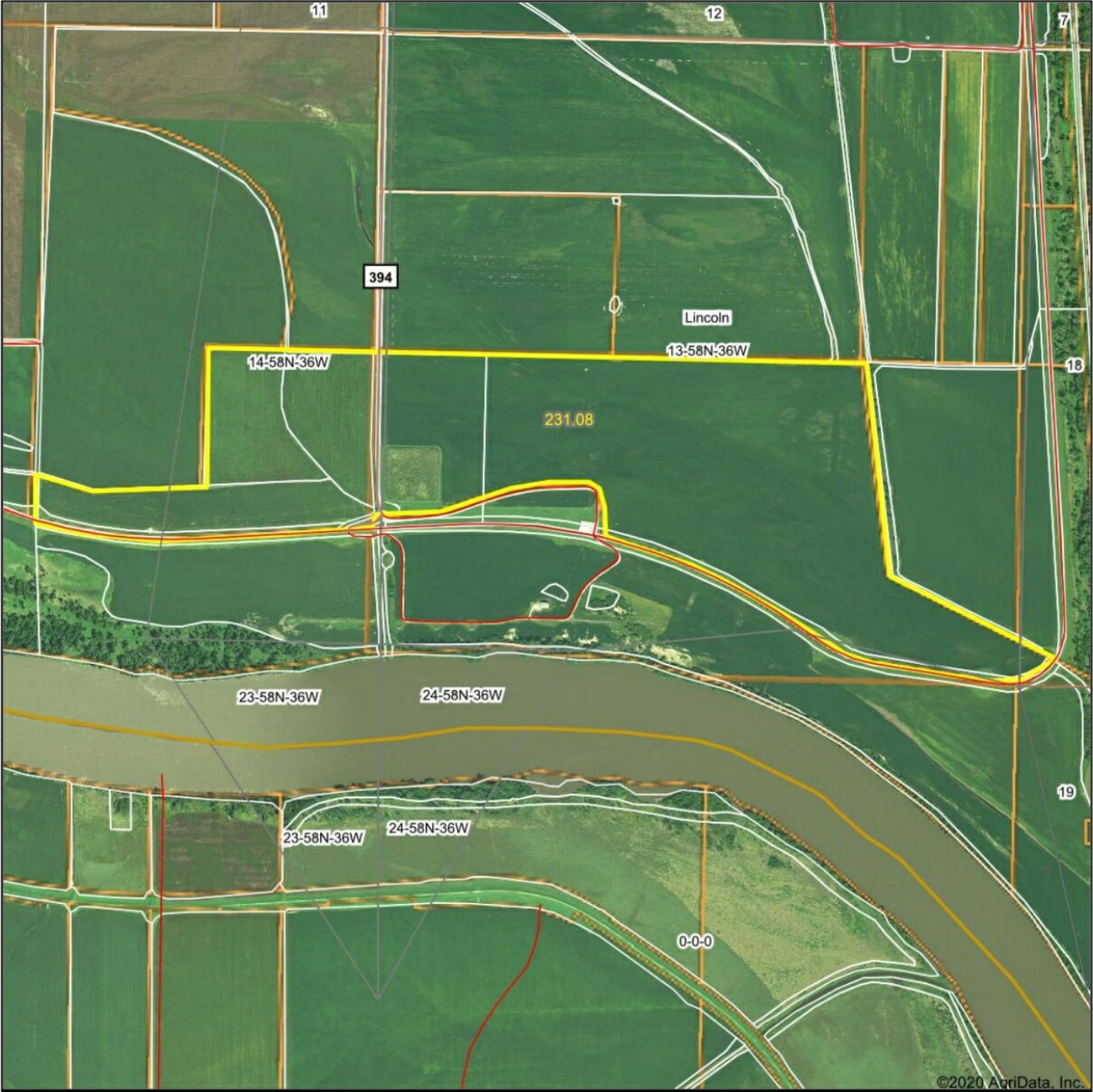
Farm is Cash rented for \$225 per acre for 2020-2024.

Annual income of \$49,500 paid 1/2 April 1st and 1/2 Dec 1st.

A small hunting lease could be added.

Call Jeff Quinn for more information 1-660-734-3925

Aerial Map



Map Center: 39° 50' 18.92, -94° 53' 42.15

0ft 1289ft 2578ft

13-58N-36W
Andrew County
Missouri

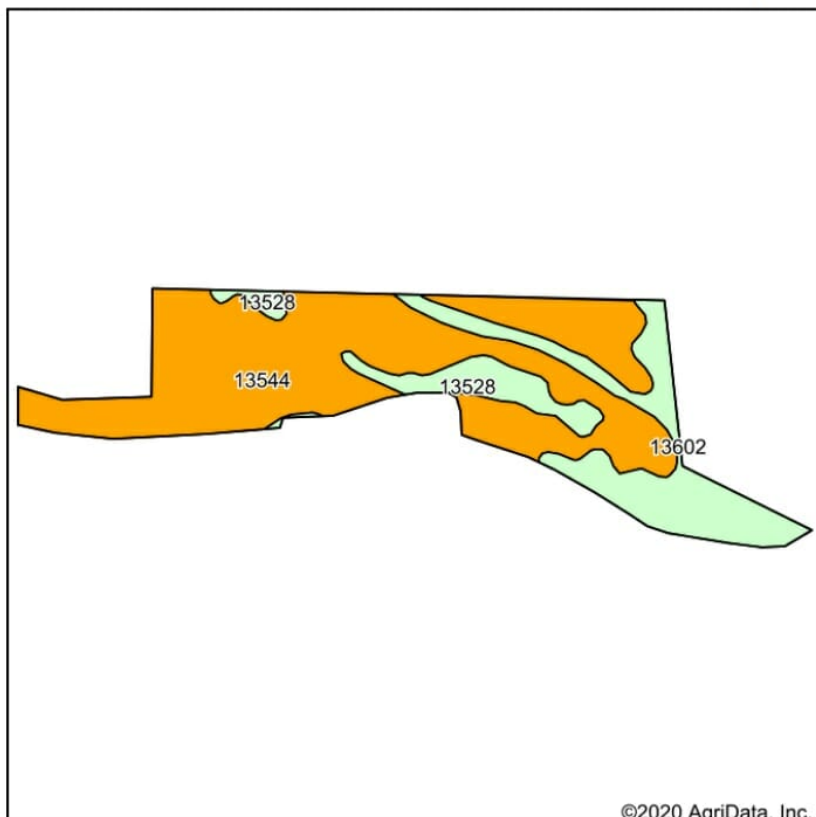


8/18/2020

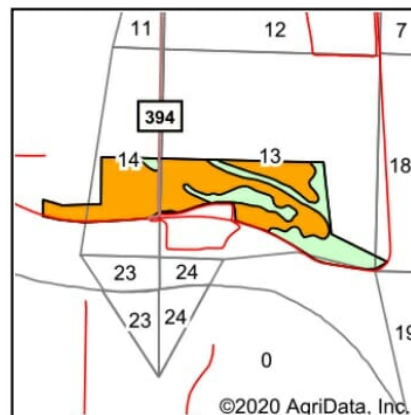
Maps Provided By:
 **surety**
CUSTOMIZED ONLINE MAPPING
© AgriData, Inc. 2020 www.AgriDataInc.com

Field borders provided by Farm Service Agency as of 5/21/2008.

Soils Map



Soils data provided by USDA and NRCS.



State: **Missouri**
 County: **Andrew**
 Location: **13-58N-36W**
 Township: **Lincoln**
 Acres: **231.08**
 Date: **8/18/2020**

Maps Provided By:

 CUSTOMIZED ONLINE MAPPING
 © AgriData, Inc. 2020 www.AgriDataInc.com



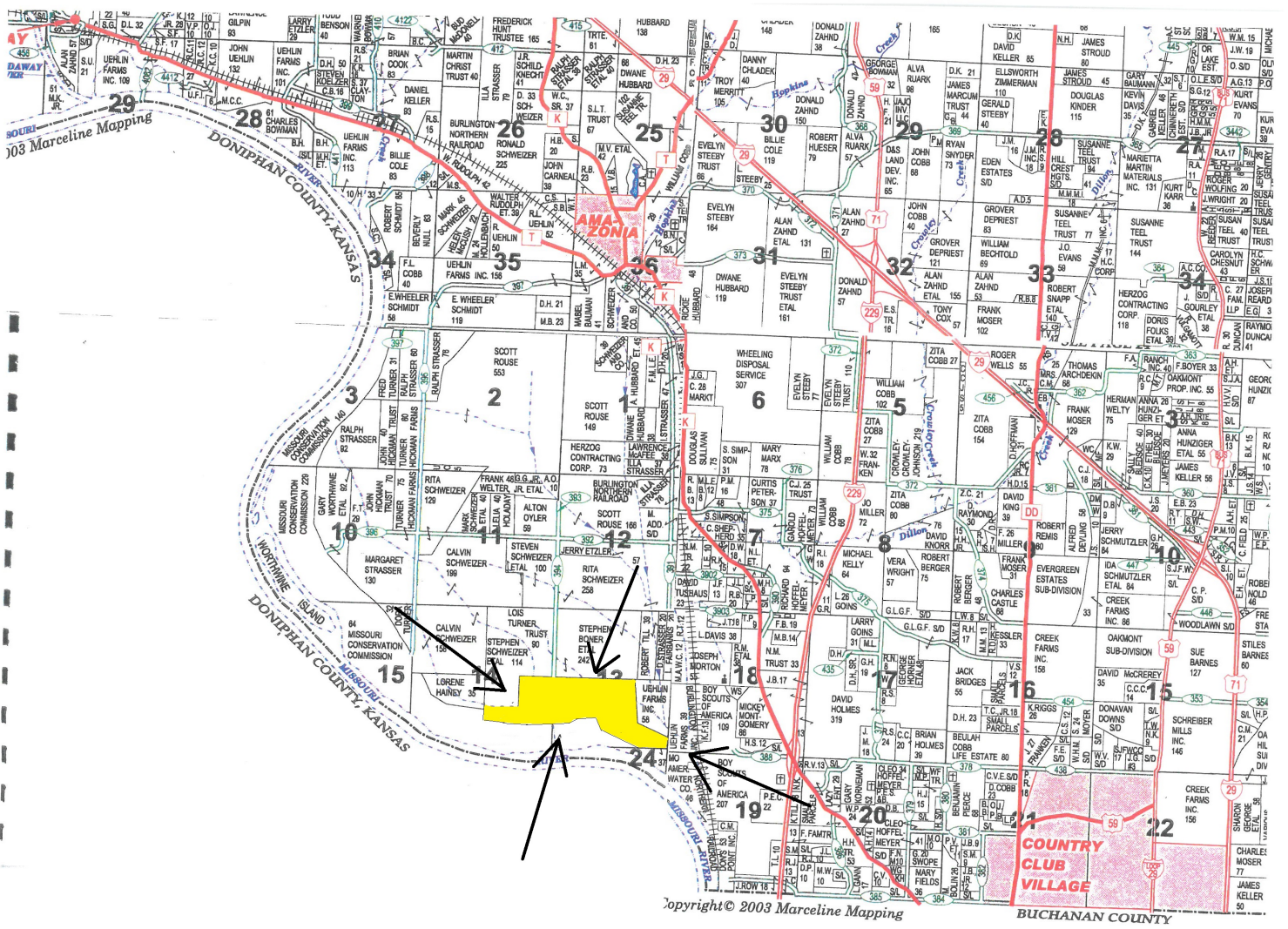
Area Symbol: MO003, Soil Area Version: 22

| Code | Soil Description | Acres | Percent of field | Non-Irr Class Legend | Non-Irr Class *c | Common bermudagrass | Orchardgrass red clover | Tall fescue | Warm season grasses | *n NCCPI Soybeans |
|------------------|--|--------|------------------|----------------------|------------------|---------------------|-------------------------|-------------|---------------------|-------------------|
| 13544 | Leta silty clay, 0 to 2 percent slopes, rarely flooded | 160.90 | 69.6% | | Ilw | 8 | 7 | 8 | 9 | 64 |
| 13602 | Haynie silt loam, 0 to 2 percent slopes, rarely flooded | 49.54 | 21.4% | | lw | 7 | 8 | 8 | 10 | 68 |
| 13528 | Haynie very fine sandy loam, 0 to 2 percent slopes, rarely flooded | 20.64 | 8.9% | | ls | 7 | 9 | 8 | 10 | 69 |
| Weighted Average | | | | | | 7.7 | 7.4 | 8 | 9.3 | *n 65.3 |

*n: The aggregation method is "Weighted Average using all components"

*c: Using Capabilities Class Dominant Condition Aggregation Method

Soils data provided by USDA and NRCS.



Copyright © 2003 Marceline Mapping

BUCHANAN COUNTY

