



# MISSOURI Land & Farm

www.missourilandandfarm.com • Office: 660-258-3185 • Fax: 660-258-2082

**296 Acres Prime Glasgow, MO – Chariton  
Co. Bottom Ground!!**  
**Hwy 5, Glasgow, MO 65254**

**Chariton**

**\$12,345**

Aerial Map



## CONTACT:



**JEFFREY QUINN**

Broker

**660-734-3925**

jquinn@missourilandandfarm.com

Using our network of buyers and sellers we were able to put this farm sale together for our sellers and buyers without it being actively on the market.

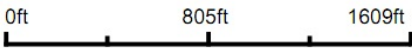
If you're looking for a specific property or wanting a free evaluation on your property please give us a call today!!!

Aerial Map



©2023 AgriData, Inc.

Map Center: 39° 17' 28.44, -92° 50' 51.04



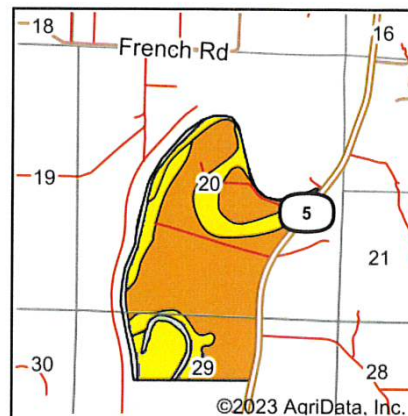
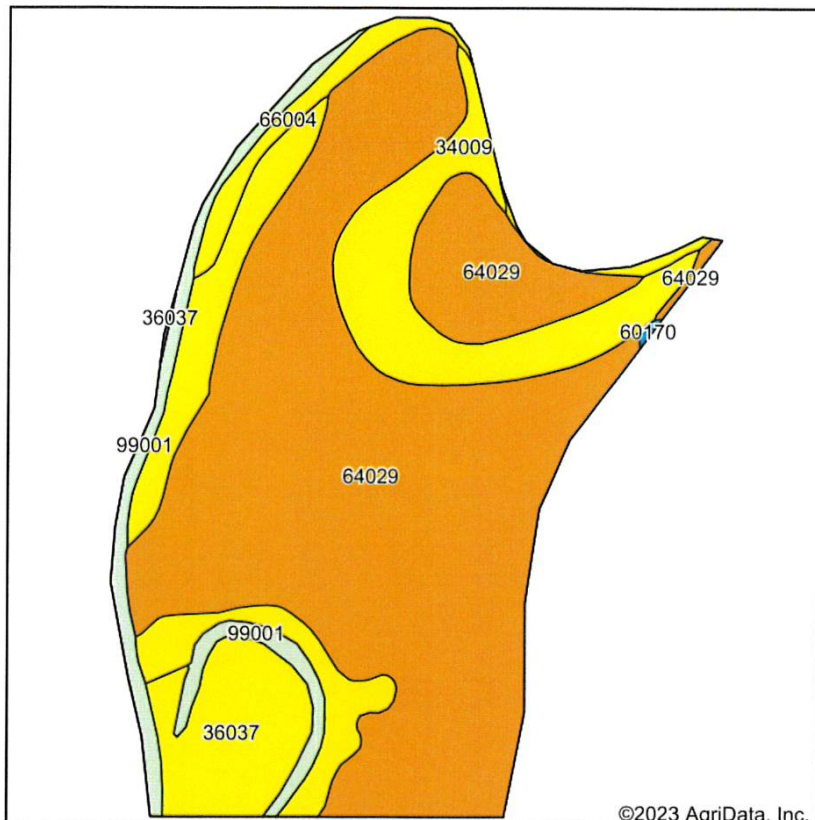
**20-52N-17W**  
**Chariton County**  
**Missouri**



3/21/2023



# Soils Map



State: **Missouri**  
 County: **Chariton**  
 Location: **20-52N-17W**  
 Township: **Chariton**  
 Acres: **296**  
 Date: **3/21/2023**

Maps Provided By: **surety**  
 CUSTOMIZED ONLINE MAPPING  
 © AgriData, Inc. 2023 www.AgriDataInc.com



Soils data provided by USDA and NRCS.

Area Symbol: MO041, Soil Area Version: 25

Code	Soil Description	Acres	Percent of field	Non-Irr Class Legend	Non-Irr Class *c	Alfalfa hay Tons	Caucasian bluestem Tons	Common bermudagrass Tons	Corn Bu	Grain sorghum Bu	Orchardgrass red clover Tons	Soybeans Bu	Tall fescue Tons	Warm season grasses Tons	V
64029	Tina silt loam, 0 to 2 percent slopes, rarely flooded	190.08	64.2%		IIlw				8			7		8	9
34009	Gifford silty clay loam, 2 to 9 percent slopes, eroded, rarely flooded	58.87	19.9%		IIle				7			6		7	8
36037	Tice silt loam, 0 to 2 percent slopes, frequently flooded	22.07	7.5%		IIlw				8			8		8	9
99001	Water	16.26	5.5%												
66004	Dockery silt loam, 0 to 2 percent slopes, frequently flooded	8.48	2.9%		IIIw				8	5	4	9	1	8	10
60170	Menfro silt loam, 9 to 30 percent slopes	0.24	0.1%		VIle	7	8		7			7		7	8
Weighted Average					*-	*-	*-		7.4	0.1	0.1	6.5	*-	7.4	8.3

\*n: The aggregation method is "Weighted Average using all components"

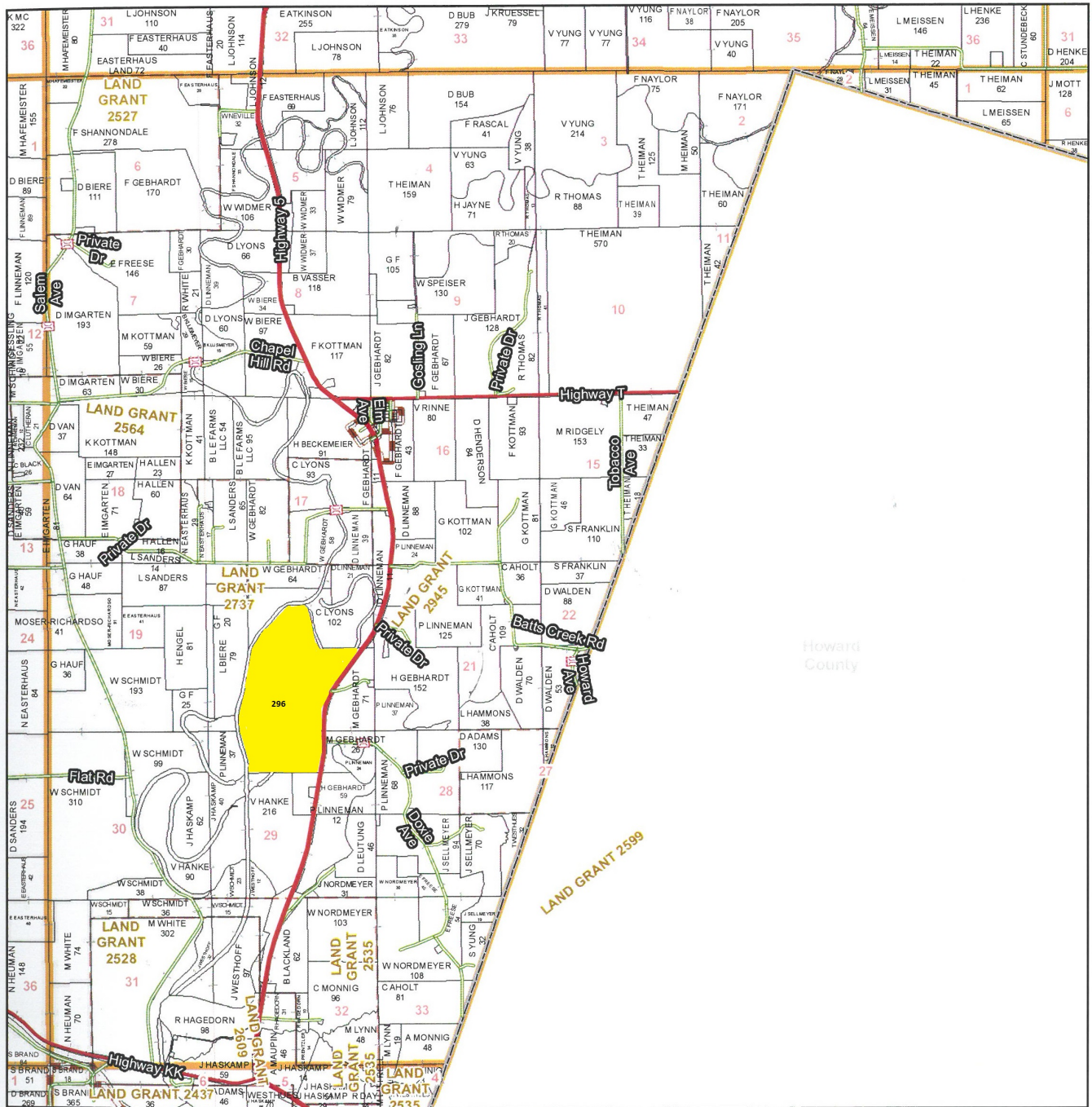
\*c: Using Capabilities Class Dominant Condition Aggregation Method

\*- Non Irr Class weighted average cannot be calculated on the current soils data due to missing data.

Soils data provided by USDA and NRCS.

# T52N - R17W

See Page 55



See Page 69

**Chariton County Commission**  
 Tony McColm - Presiding Commissioner  
 Danny Price - Western District Commissioner  
 Steve Atkinson - Eastern District Commissioner

**Data Courtesy Chariton County Geographic Information System**

Darrin Gladbach - Assessor

This data was primarily developed for tax purposes and is not considered survey accurate.

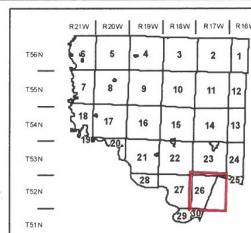
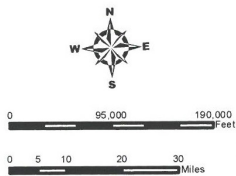
Most parcels > 10 ac labeled

GIS & Map Development By:



www.midlandgis.com

© Copyright Chariton County, MO



## Legend

- City Limits
- Township-Range
- Sections
- Land Grant
- Political Township
- Land Ownership
- Subdivisions
- Conservation & US
- US Highways
- ST Highways
- CO Highways
- Streets
- Rail Roads
- Streams
- Land Hooks
- Bridges