



# MISSOURI Land & Farm

[www.missourilandandfarm.com](http://www.missourilandandfarm.com) • Office: 660-258-3185 • Fax: 660-258-2082

**Hickory Grovve Rd / Powell Ave**

**Chariton County**

**\$3,000**



## CONTACT:



**JEFFREY QUINN**

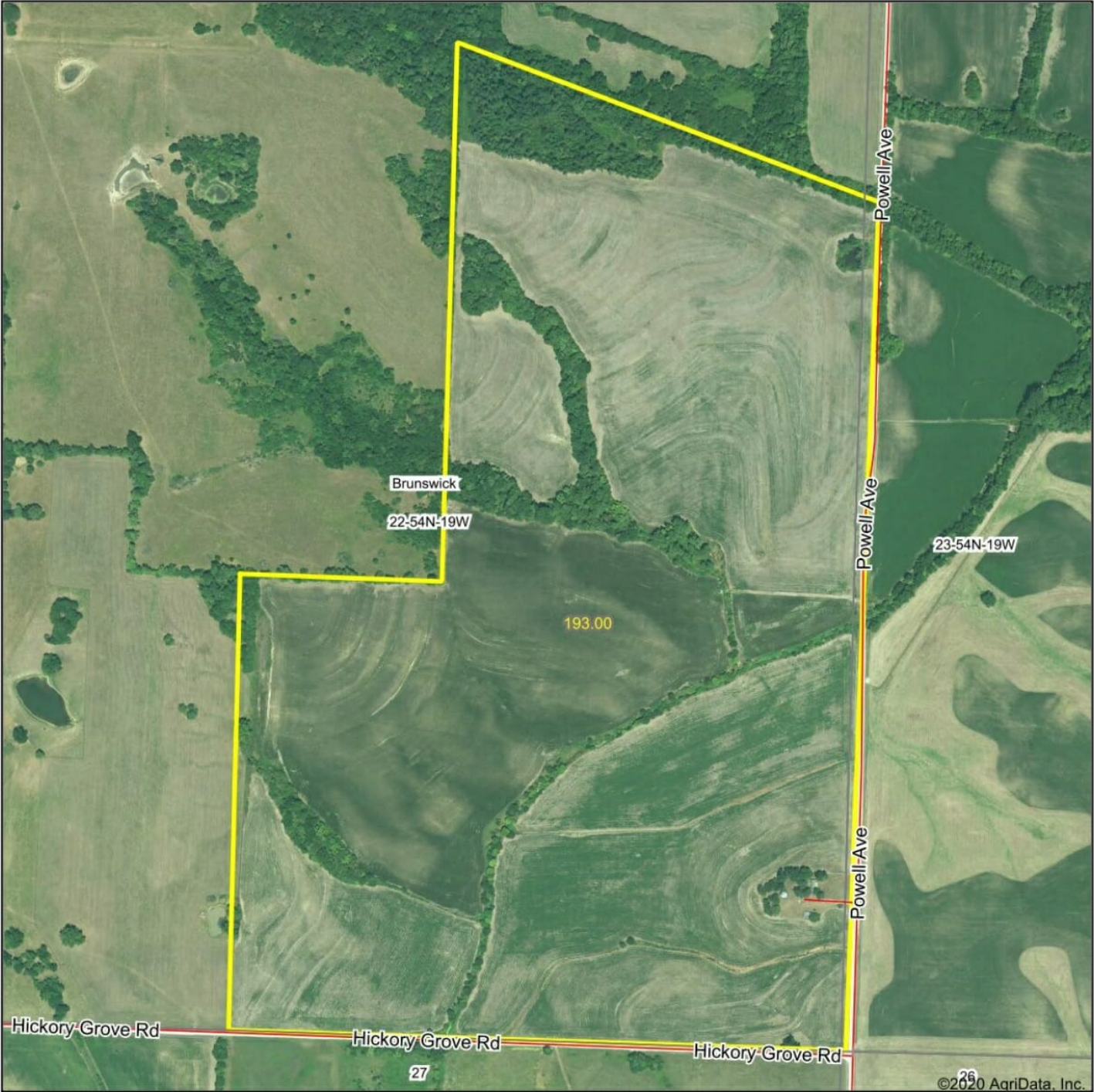
Broker

**660-734-3925**

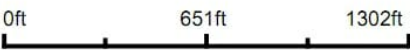
[jquinn@missourilandandfarm.com](mailto:jquinn@missourilandandfarm.com)

193 acres located in the heart of Chariton Co. Agricultural fields with timbered drawls. There is a nice spot to camp.

Aerial Map



Map Center: 39° 28' 19.23, -93° 1' 20.55



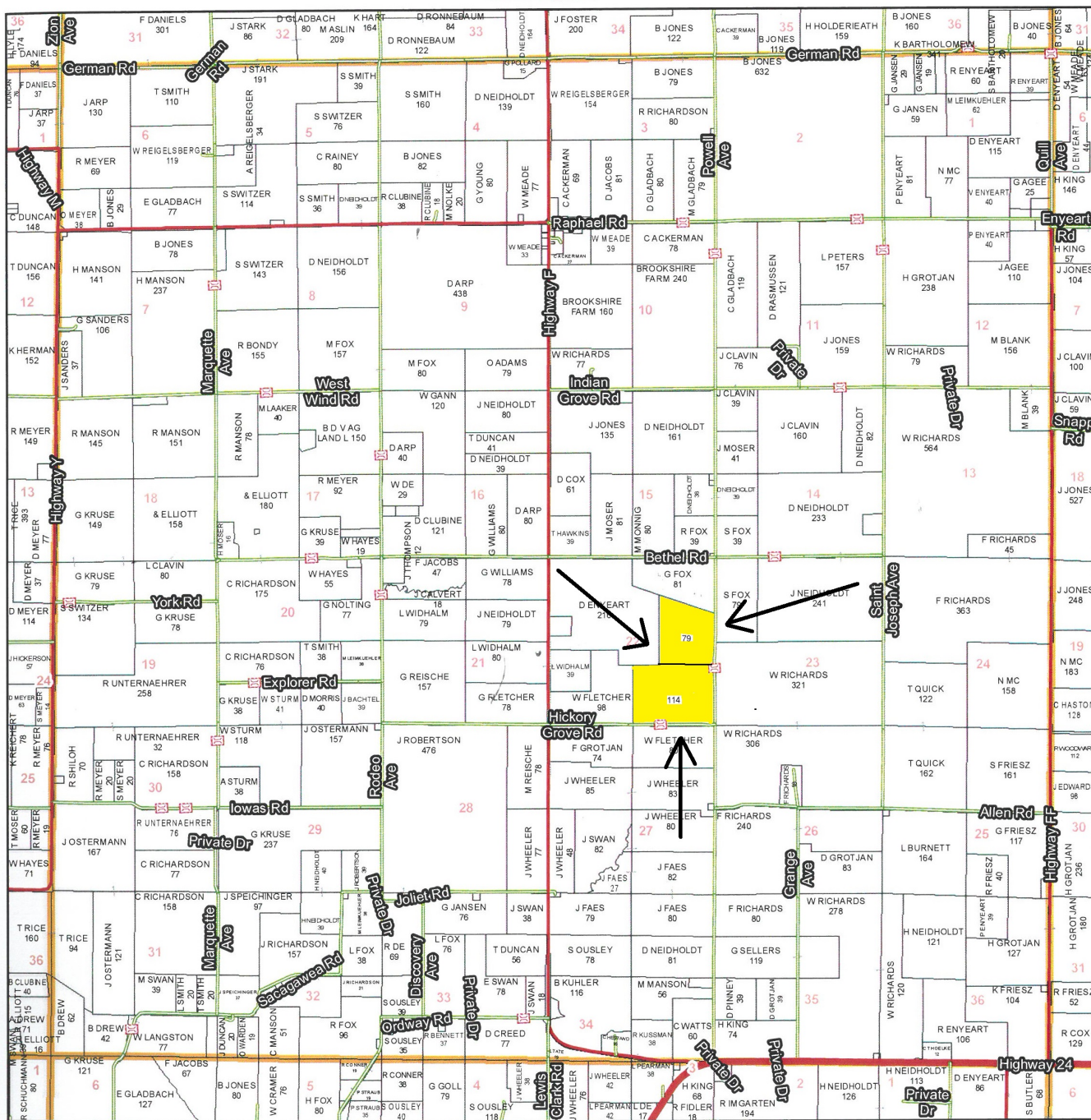
22-54N-19W  
Chariton County  
Missouri



9/21/2020

# T54N - R19W

See Page 27



See Page 51

## Chariton County Commission

Tony McCallum - Presiding Commissioner  
 Danny Price - Western District Commissioner  
 Steve Atkinson - Eastern District Commissioner

## Data Courtesy Chariton County Geographic Information System

Darrin Gladbach - Assessor

This data was primarily developed for tax purposes and is not considered survey accurate.

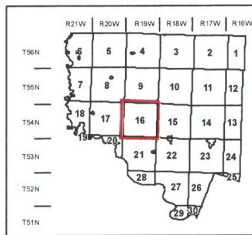
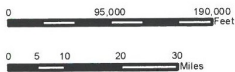
Most parcels > 10 ac labeled

GIS & Map Development By:



www.midlandgis.com

© Copyright Chanton County, MO



## Legend

- City Limits
- Township-Range
- Sections
- Land Grant
- Political Township
- Land Ownership
- Subdivisions
- Conservation & US
- US Highways
- ST Highways
- CO Highways
- Streets
- Rail Roads
- Streams
- Land Hooks
- Bridges

