



# MISSOURI Land & Farm

[www.missourilandandfarm.com](http://www.missourilandandfarm.com) • Office: 660-258-3185 • Fax: 660-258-2082

**46.8 Acre Randolph Co. Tillable Farm!!**

**CR 2769, Clark, MO 65243**

**Randolph**

**\$514,800**





## CONTACT:



### DAVE ATKINSON

Sales & Auctioneer

660-788-3333

[datkinson@missourilandandfarm.com](mailto:datkinson@missourilandandfarm.com)

## CONTACT:



### JERRY CRUTCHFIELD

Sales

660-670-1249

[jcrutchfield@missourilandandfarm.com](mailto:jcrutchfield@missourilandandfarm.com)



Highly Tillable 46.8 acre parcel with approximately 38 acres tillable.

Farm has not been reconstituted at FSA nor measured for tillable acres. This will need done prior to purchase.

The farm consist of all class 3 soils mainly Mexico Silt Loam.

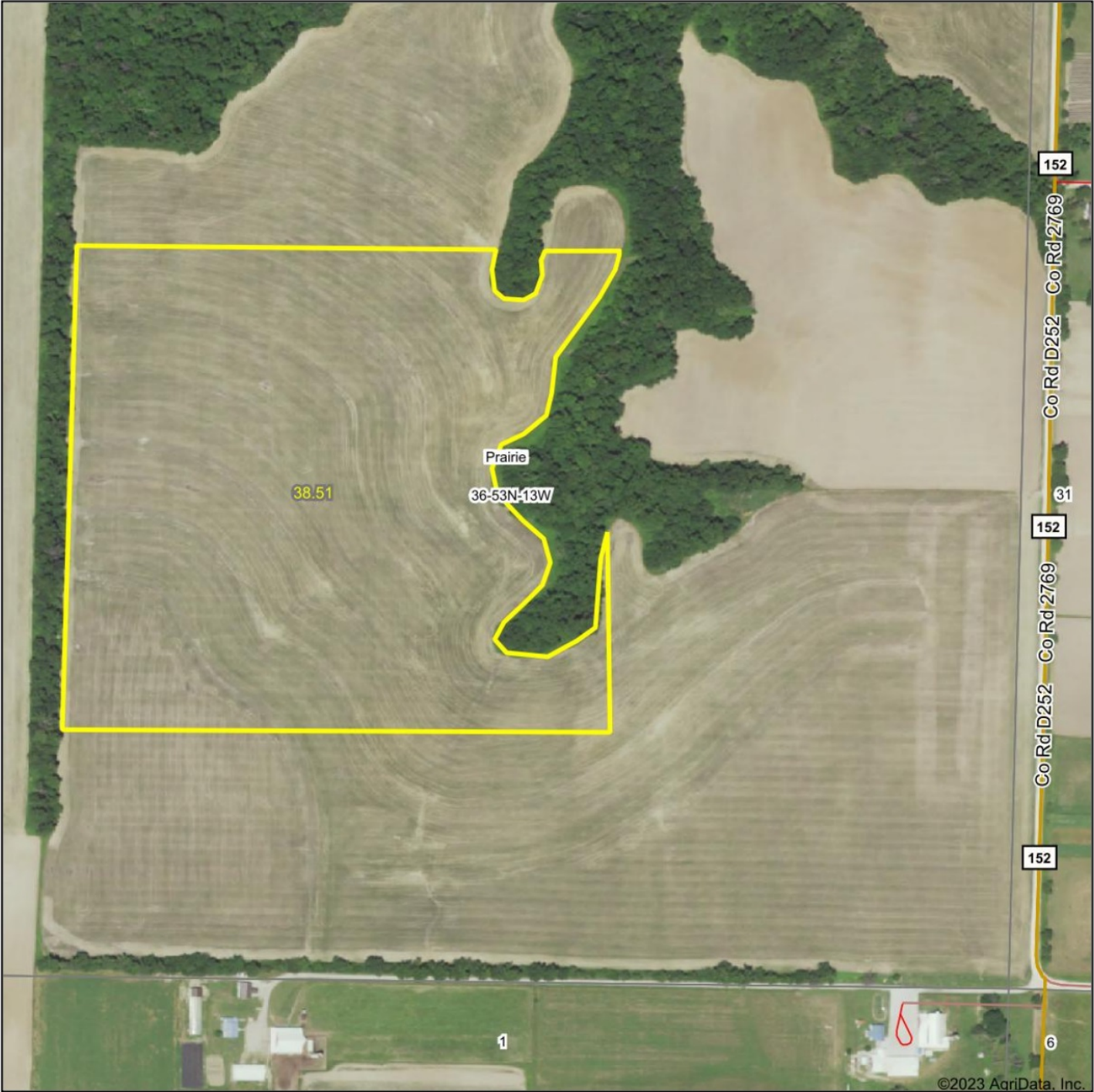
Majority of farm is 0-4% Slopes and terraced.

Access is by a dozed easement off of Co Road 152

Call Dave Atkinson 660-788-3333 or Jerry Crutchfield 660-670-1249 for more information.

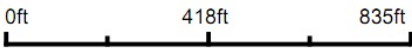


Aerial Map



©2023 AgriData, Inc.

Map Center: 39° 20' 14.35, -92° 18' 54.81

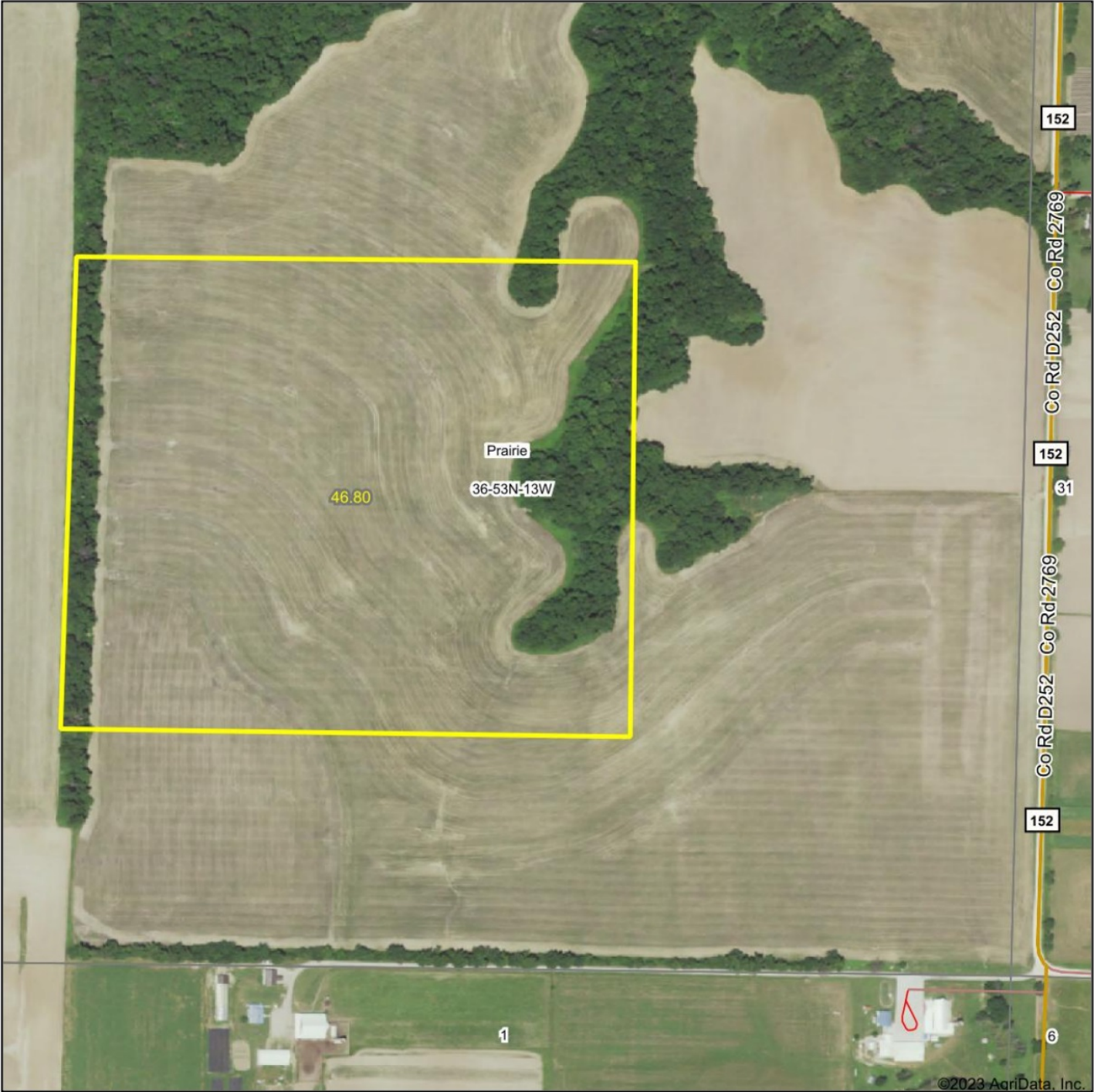


**36-53N-13W**  
**Randolph County**  
**Missouri**



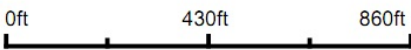


Aerial Map



©2023 AgriData, Inc.

Map Center: 39° 20' 14.35, -92° 18' 55.36

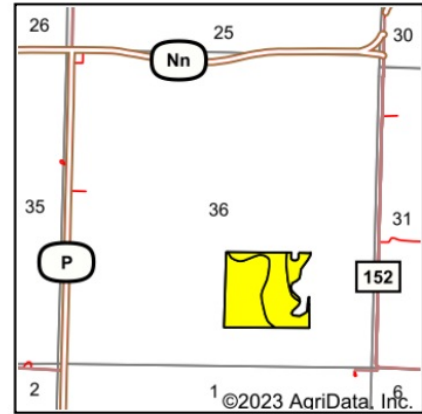
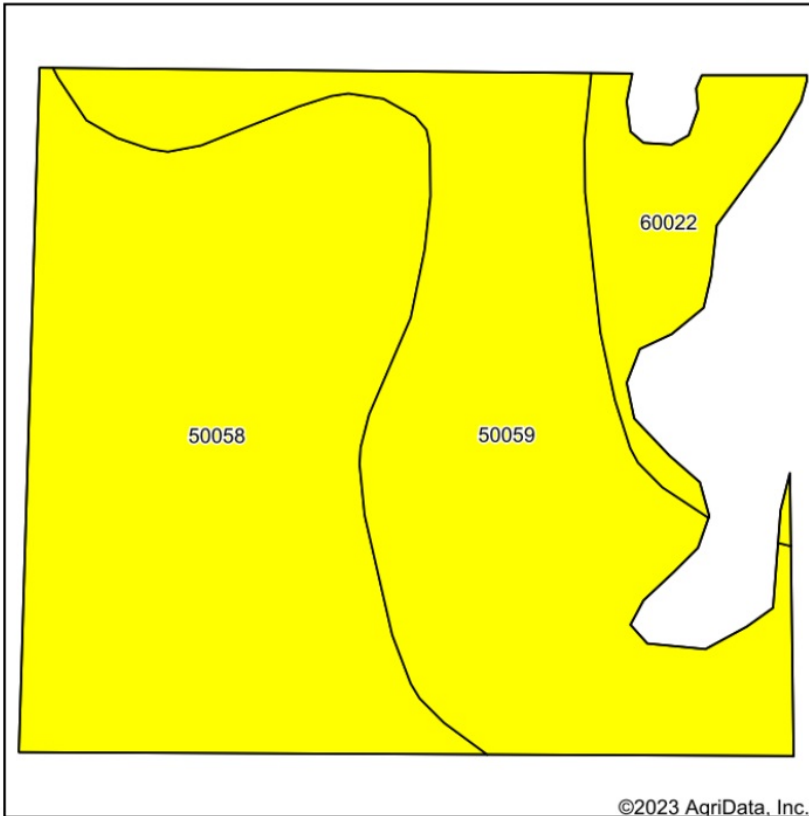


36-53N-13W  
Randolph County  
Missouri





# Soils Map



State: **Missouri**  
 County: **Randolph**  
 Location: **36-53N-13W**  
 Township: **Prairie**  
 Acres: **38.51**  
 Date: **1/4/2023**

Maps Provided By  
  
 CUSTOMIZED ONLINE MAPPING  
 © AgriData, Inc. 2021 www.AgriDataInc.com



Soils data provided by USDA and NRCS.

Area Symbol: MO175, Soil Area Version: 23						
Code	Soil Description	Acres	Percent of field	Non-Irr Class Legend	Non-Irr Class *c	*n NCCPI Soybeans
50058	Mexico silt loam, 0 to 2 percent slopes	19.54	50.7%		IIIw	59
50059	Mexico silt loam, 1 to 4 percent slopes, eroded	15.61	40.5%		IIIe	53
60022	Leonard silt loam, 1 to 6 percent slopes, eroded	3.36	8.7%		IIIe	51
Weighted Average					3.00	*n 55.9

\*n: The aggregation method is "Weighted Average using all components"

\*c: Using Capabilities Class Dominant Condition Aggregation Method

Soils data provided by USDA and NRCS.

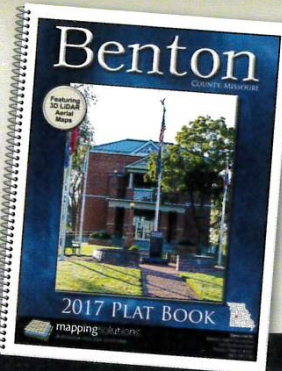


# We offer Plat Books in 16 states...

- Alabama
- Arkansas
- Florida
- Illinois
- Indiana
- Iowa
- Kansas
- Louisiana
- Michigan
- Minnesota
- Mississippi
- Missouri
- Oklahoma
- Ohio
- Pennsylvania
- Wisconsin



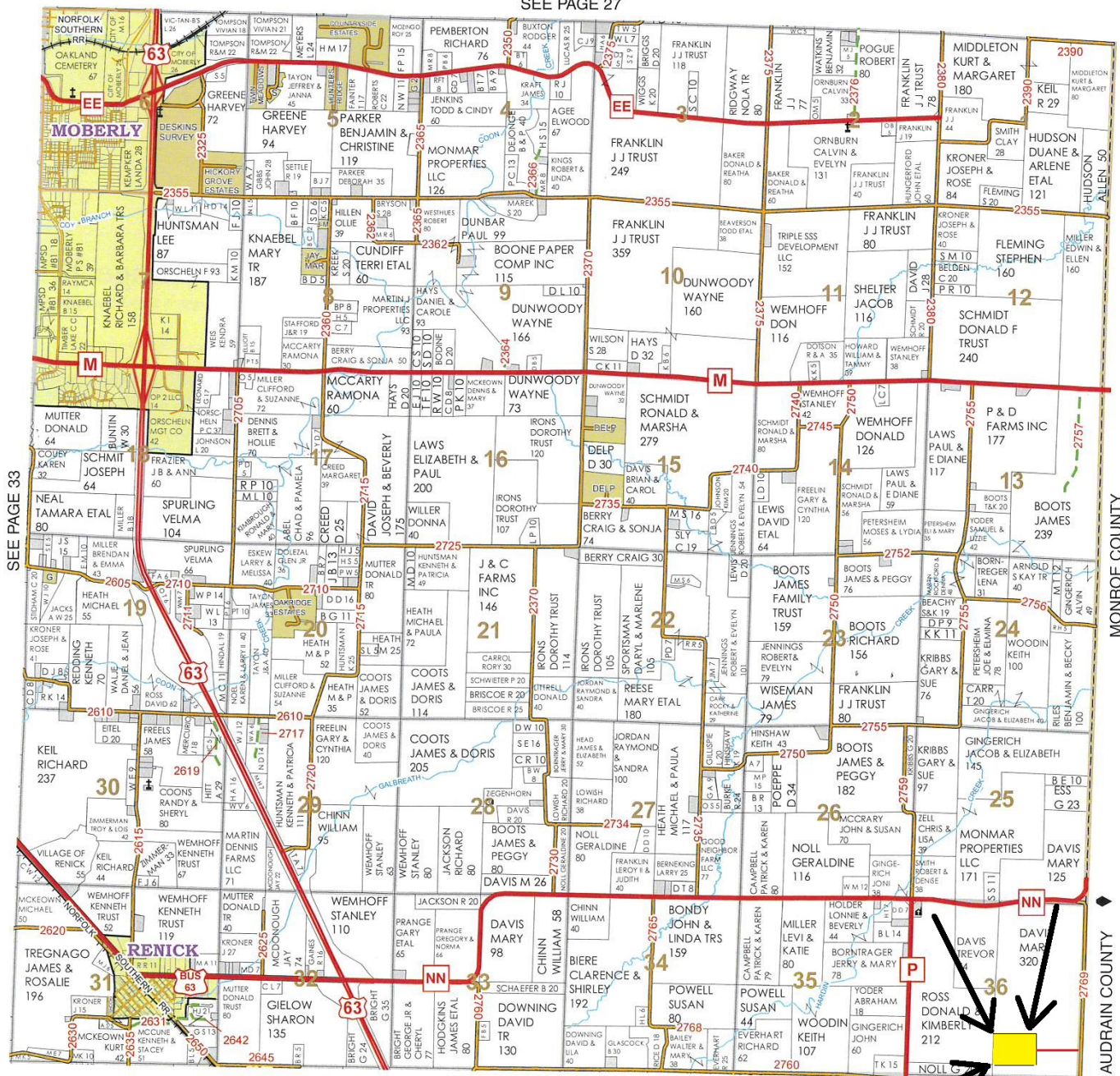
mappingsolutionsGIS.com



## Township 53N - Range 13W

Copyright © 2018 Mapping Solutions

SEE PAGE 27



SEE PAGE 41