



MISSOURI Land & Farm

www.missourilandandfarm.com • Office: 660-258-3185 • Fax: 660-258-2082

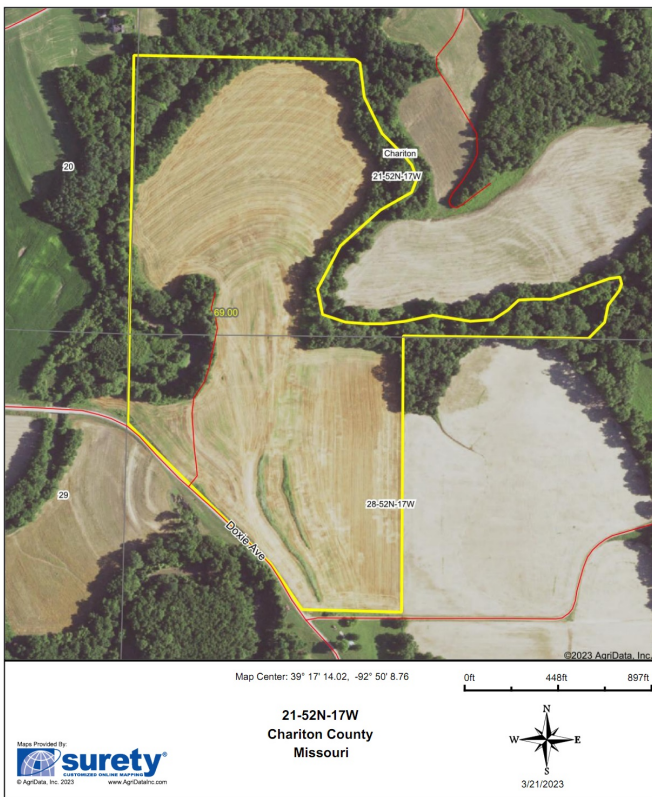
69 Acres -Chariton Co. Tillable

Doxie Ave, Glasgow, MO 65254

Chariton Co.

\$12,345

Aerial Map



CONTACT:



JEFFREY QUINN

Broker

660-734-3925

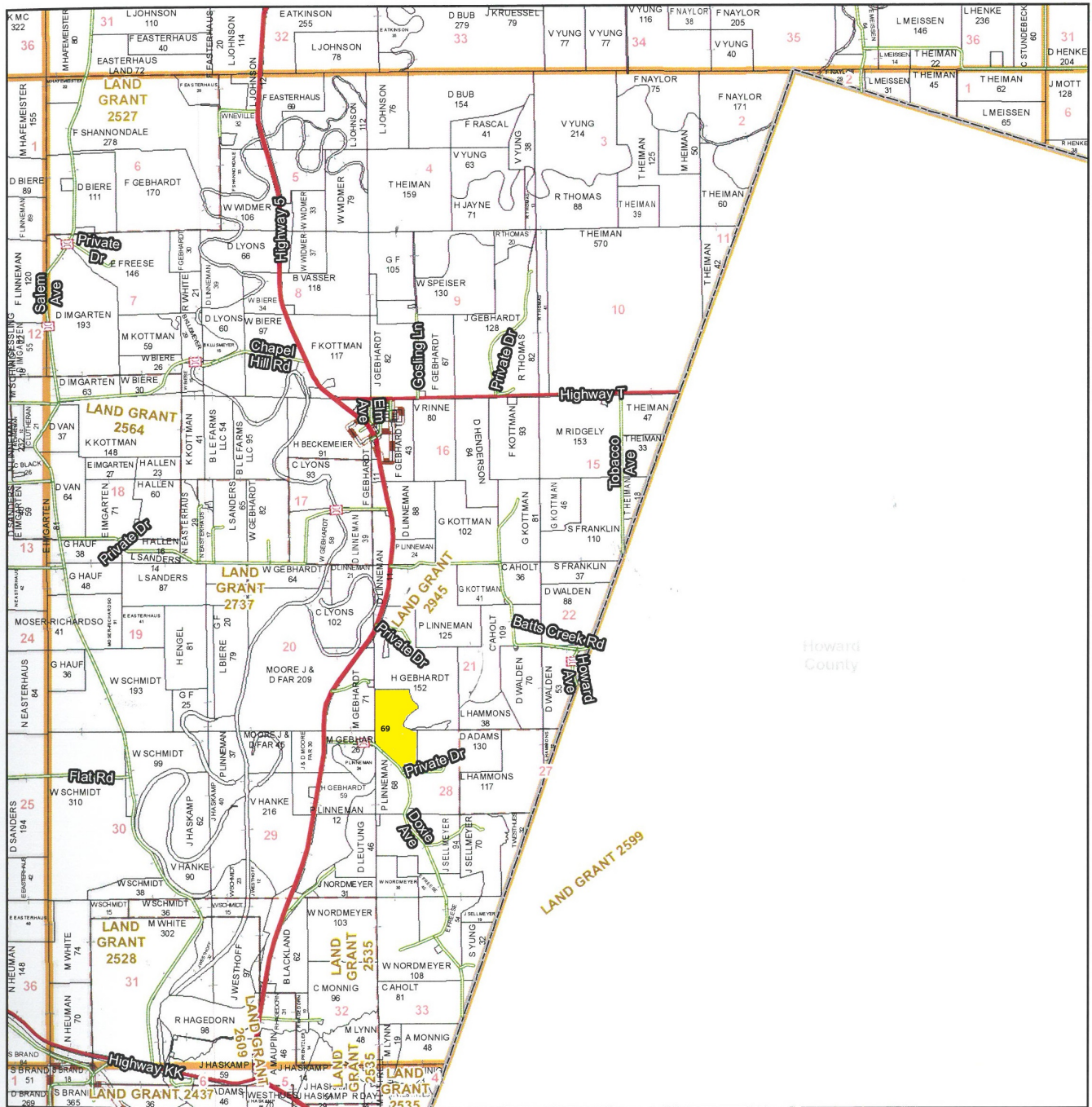
jquinn@missourilandandfarm.com

Using our network of buyers and sellers we were able to put this farm sale together for our sellers and buyers without it being actively on the market.

If you are looking for a specific property or wanting a free evaluation on your property please give us a call today!!!

T52N - R17W

See Page 55



See Page 69

Chariton County Commission
 Tony McColm - Presiding Commissioner
 Danny Price - Western District Commissioner
 Steve Atkinson - Eastern District Commissioner

Data Courtesy Chariton County Geographic Information System

Darrin Gladbach - Assessor

This data was primarily developed for tax purposes and is not considered survey accurate.

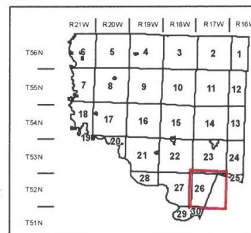
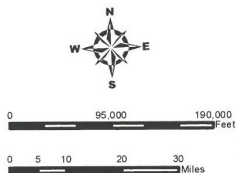
Most parcels > 10 ac labeled

GIS & Map Development By:



www.midlandgis.com

© Copyright Chariton County, MO



Legend

- City Limits
- Township-Range
- Sections
- Land Grant
- Political Township
- Land Ownership
- Subdivisions
- Conservation & US
- US Highways
- ST Highways
- CO Highways
- Streets
- Rail Roads
- Streams
- Land Hooks
- Bridges