



# MISSOURI Land & Farm

www.missourilandandfarm.com • Office: 660-258-3185 • Fax: 660-258-2082

## Flair's 18 Acre Hamburg Hammer Drop Hideaway

12004 C. Ave, Rockport, MO 64482

Atchison County

**\$289,000**



### CONTACT:



**JEFFREY QUINN**

Broker

660-734-3925

[jquinn@missourilandandfarm.com](mailto:jquinn@missourilandandfarm.com)



Are you looking for an affordable turn key waterfowl hunting property? Look no further! This property packs a lot into a smaller tract. When looking for the perfect waterfowl location location is everything. Located near Grey's Lake this 18 acre +/- property features just that. The surrounding agricultural fields and close proximity to the Missouri River Flyway should have you right in line for the fall migration. A 2.65 acre hunting pool is set up perfect for planting corn, millet or whatever you desire. A 3 year old brand new 10" well with cellular off and on capabilities and two risers in different locations. Monitor your water level and well times from the ease of your home or office before you head out to hunt! This property is set up with power to the middle of the hunting hole to keep the ice off and water open on those cold winter mornings making this a killer spot.

This property also comes complete turnkey with a 45'x60' storage building with power, a Lowe 14' flat bottom boat w/ Vanguard Hyper Drive engine and shaft driven mudbug drive with full boat trailer all included. Also comes with a Full spread of decoys, portables, other equipment and has boat ramp to access Grey's Lake as well off private property.

The owner is currently utilizing the remaining 10+/- tillable acres for an annual cash rent income of \$2500.00.

Its hard to find properties in this price range on such a high quality proven successful waterfowl property! The memories made hunting with family and friends last a lifetime!

Call or text Jeff Quinn today for more information 660-734-3925

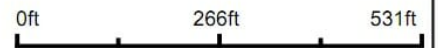


# Aerial Map



©2023 AgriData, Inc.

Boundary Center: 40° 33' 20.44, -95° 38' 19.37



**11-66N-42W**  
**Atchison County**  
**Missouri**



9/12/2023

# Aerial Map



©2023 AgriData, Inc.

Map Center: 40° 33' 20.91, -95° 38' 19.2

0ft 222ft 445ft

**11-66N-42W**  
**Atchison County**  
**Missouri**

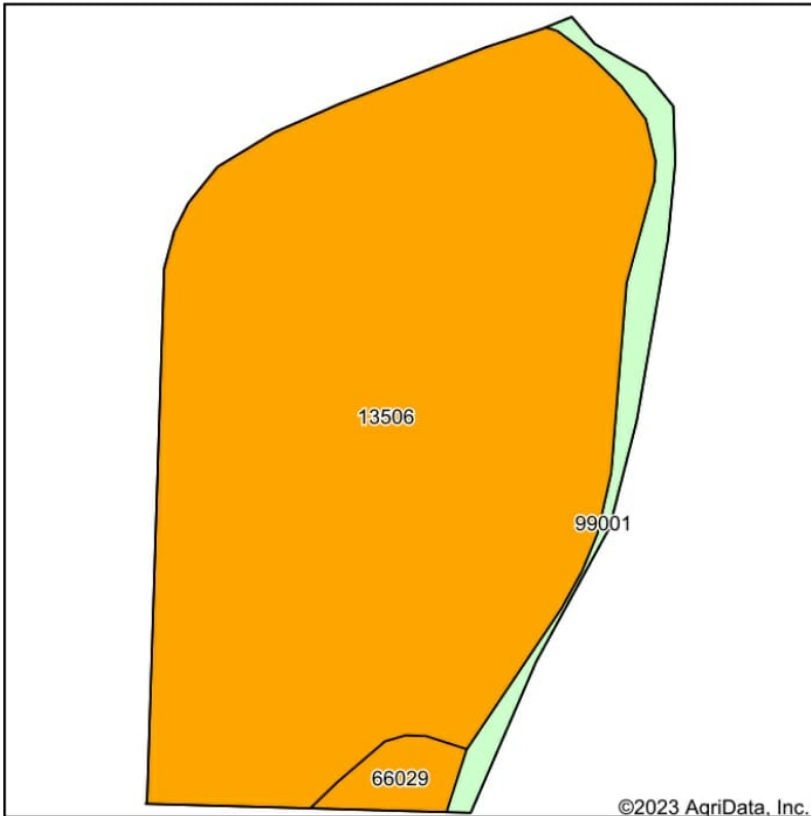


9/12/2023

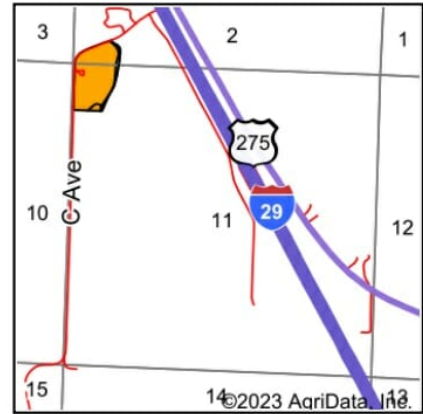
Maps Provided By:  
 **surety**  
CUSTOMIZED ONLINE MAPPING  
© AgriData, Inc. 2023 www.AgriDataInc.com



# Soils Map



Soils data provided by USDA and NRCS.



State: **Missouri**  
 County: **Atchison**  
 Location: **11-66N-42W**  
 Township: **Buchanan**  
 Acres: **18**  
 Date: **9/12/2023**

Maps Provided By:  
  
 CUSTOMIZED ONLINE MAPPING  
 © AgriData, Inc. 2023 [www.AgriDataInc.com](http://www.AgriDataInc.com)



Area Symbol: MO005, Soil Area Version: 25												
Code	Soil Description	Acres	Percent of field	Non-Irr Class Legend	Non-Irr Class *c	Irr Class *c	Common bermudagrass Tons	Orchardgrass red clover Tons	Tall fescue Tons	Warm season grasses Tons	*n NCCPI Soybeans	
13506	Blencoe silty clay loam, clayey substratum, 0 to 2 percent slopes, rarely flooded	16.61	92.3%		llw	llw		7	6	7	8	53
99001	Water	0.95	5.3%									
66029	Dockery silt loam, 0 to 2 percent slopes, occasionally flooded	0.44	2.4%		llw		8		9	8	10	70
<b>Weighted Average</b>						*-	*-	<b>6.7</b>	<b>5.8</b>	<b>6.7</b>	<b>7.6</b>	<b>*n 50.6</b>

\*n: The aggregation method is "Weighted Average using all components"

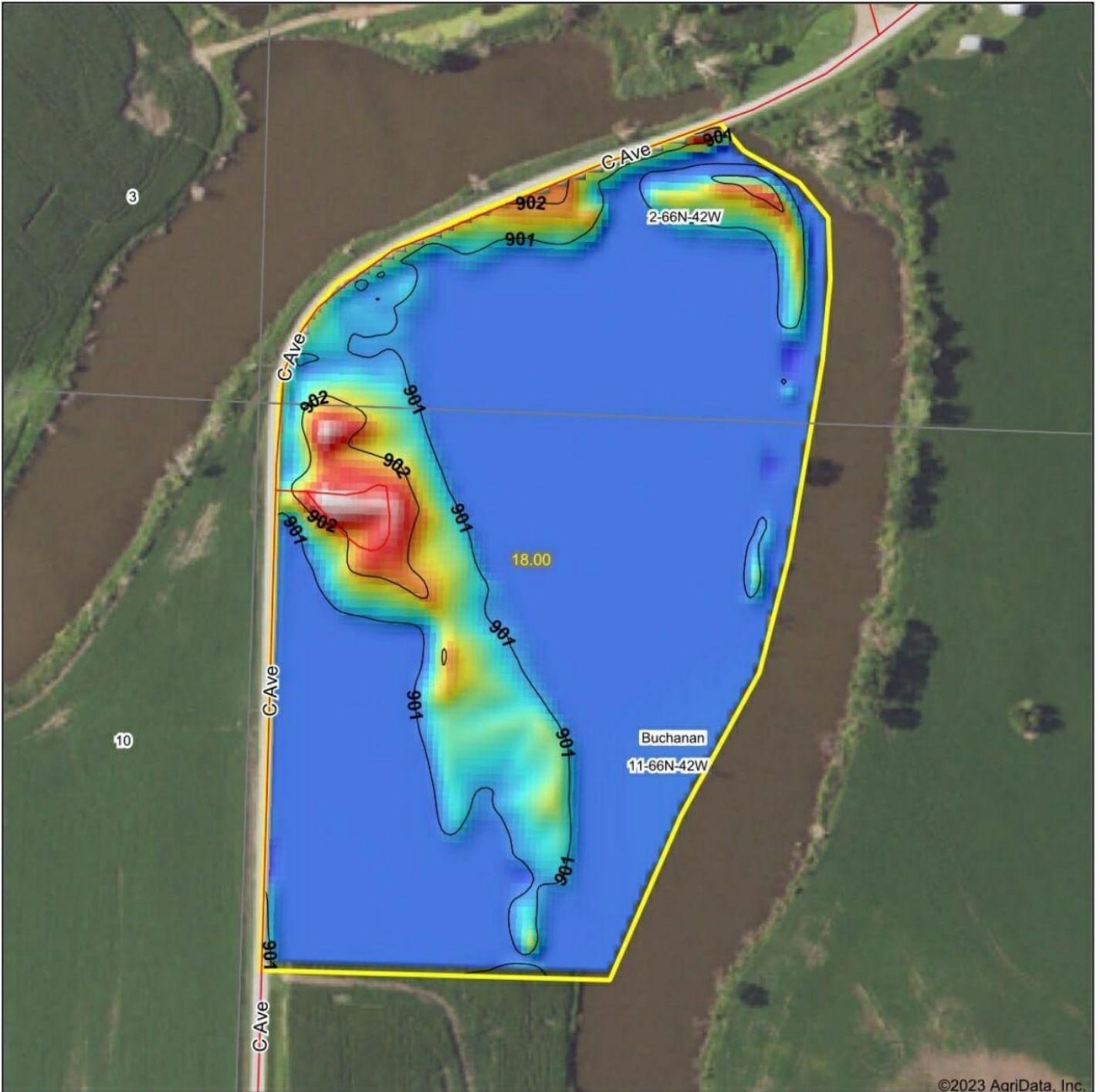
\*c: Using Capabilities Class Dominant Condition Aggregation Method

\*- Non Irr Class weighted average cannot be calculated on the current soils data due to missing data.

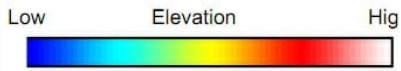
\*- Irr Class weighted average cannot be calculated on the current soils data due to missing data.

Soils data provided by USDA and NRCS.

# Topography Hillshade



©2023 AgriData, Inc.



Source: USGS 3 meter dem  
 Interval(ft): 1  
 Min: 900.7  
 Max: 902.9  
 Range: 2.2  
 Average: 901.1  
 Standard Deviation: 0.36 ft



9/12/2023

**11-66N-42W**  
**Atchison County**  
**Missouri**

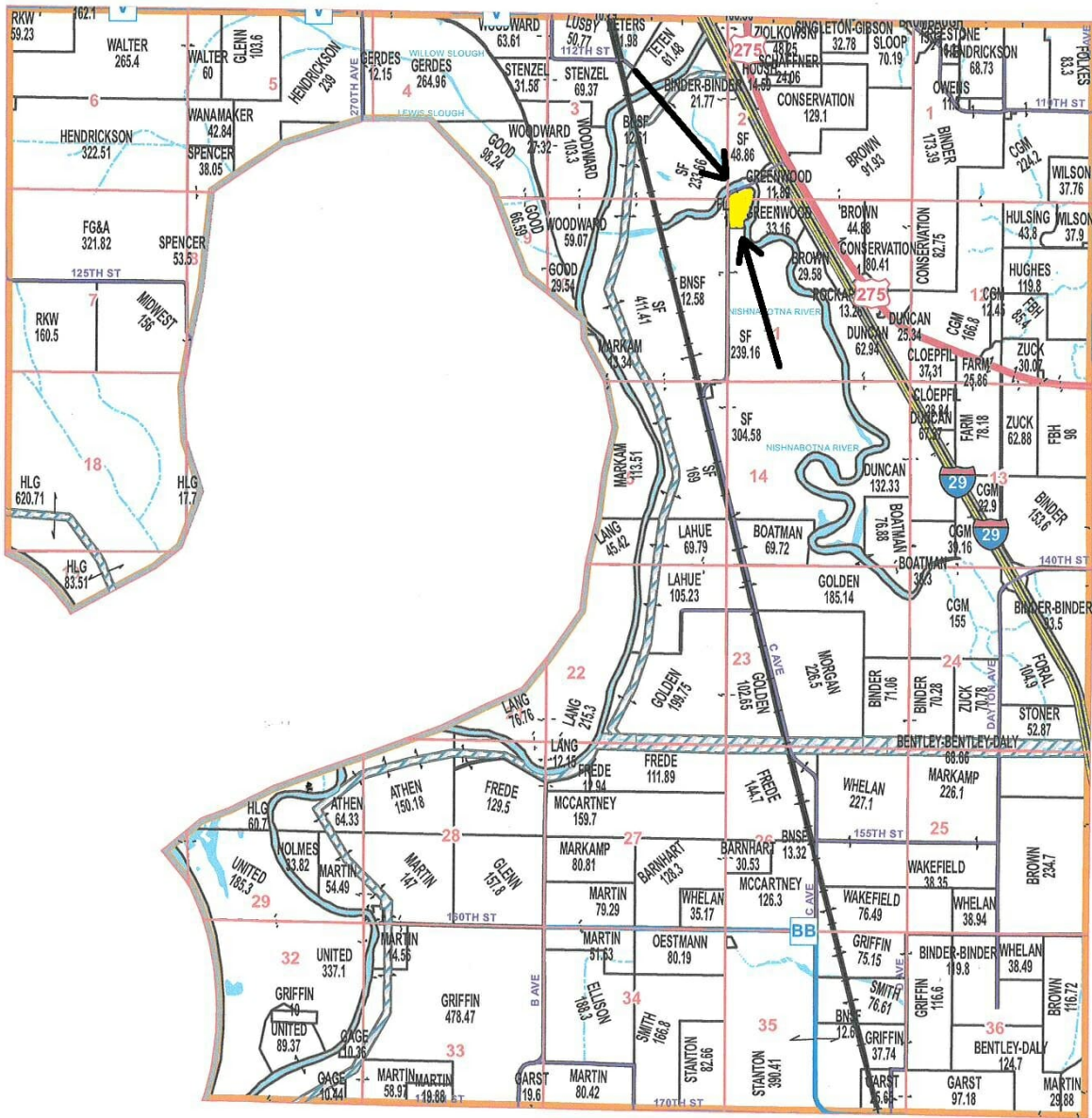
Boundary Center: 40° 33' 20.91, -95° 38' 19.2

Maps Provided By:  
**surety**  
 CUSTOMIZED ONLINE MAPPING  
 © AgriData, Inc. 2023 www.AgriDataInc.com



# Atchison County, MO T66N-R42W

See Page 19



See Page 23

See Page 27

See Pages 43 & 45

Map Date: January 09, 2023  
 Atchison County Commission  
 Curtis Livengood - Presiding Commissioner  
 Richard C Burke - Southern District  
 Jim Quimby - Northern District  
 Data Courtesy of Atchison County  
 Geographic Information System  
 Lori Jones - Assessor / GIS Analyst  
 Stephanie Shineman - RE Clerk / GIS Coordinator  
<https://atchison.integritygis.com>

*This data was primarily developed for tax purposes and is not considered survey accurate.*

Most parcels > 10 ac labeled



1 inch = 0.88 miles



**Legend**

- County Boundary
- City Limits
- Township-Range
- Sections
- Political Townships
- Water
- Levees
- Land Ownership
- US Highways
- ST Highways
- CO Highways
- Streets / Roads
- Rail Roads
- Streams
- Land Hooks
- Easements



