



# MISSOURI Land & Farm

[www.missourilandandfarm.com](http://www.missourilandandfarm.com) • Office: 660-258-3185 • Fax: 660-258-2082

## Nice 4 Bed, 2 3/4 Bath home in Salisbury School District!!

34112 Brummal Road, Salisbury, MO 65281

Chariton County

**\$425,000**



## CONTACT:



## DAVE ATKINSON

Sales & Auctioneer

660-788-3333

[datkinson@missourilandandfarm.com](mailto:datkinson@missourilandandfarm.com)



This home is what everyone is looking for a home close to town on a small acreage.

This recently remodeled home with 4 bedroom 2.75 baths with 2 car garage. Large kitchen ample cabinets, dining room, living room, family room, tons of closets and storage. Master bedroom has master bath with heated floor. Other bedrooms are spacious. Nice patio area with Bocce ball area.

It also features a Large 40x64 building with 15' lean-to other smaller shed.

The 7 m/l acres has a nice pond stocked with bass, crappie, catfish, bluegill, red ear, grass carp and walleye.

Many possibilities call or Text Dave Atkinson 660-788-3333

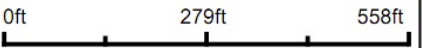


Aerial Map



©2022 AgriData, Inc.

Map Center: 39° 23' 18.73, -92° 50' 3.93



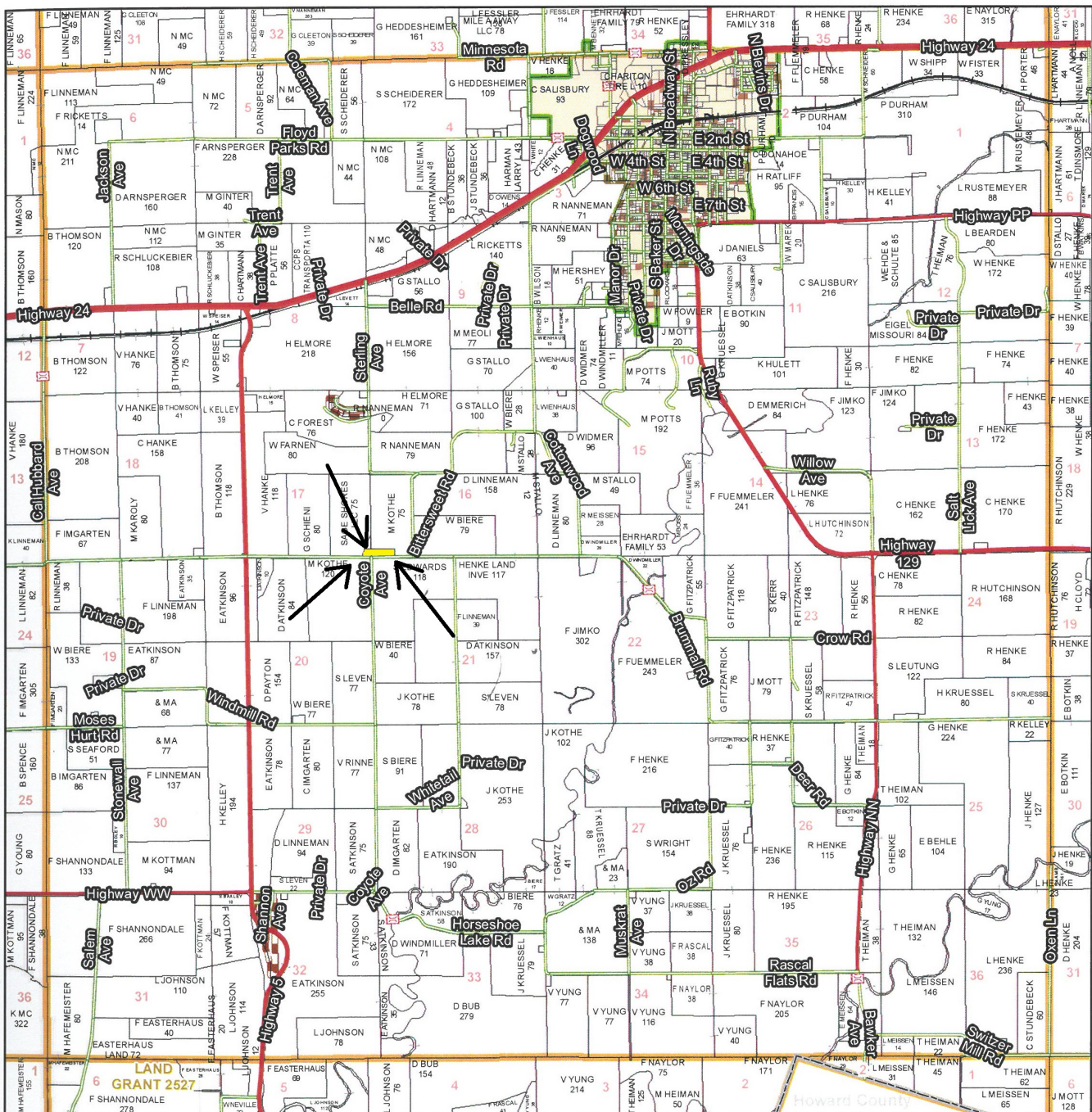
**16-53N-17W**  
**Chariton County**  
**Missouri**





# T53N - R17W

**See Page 43**



See Page 53

See Page 57

**See Page 63**

**Chariton County Commission**  
*Tony McCollum - Presiding Commissioner*  
*Danny Price - Western District Commissioner*  
*Steve Atkinson - Eastern District Commissioner*

*This data was primarily developed for tax purposes and is not considered survey accurate.*

**Data Courtesy Chariton County  
Geographic Information System**

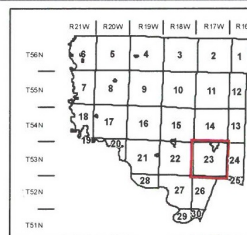
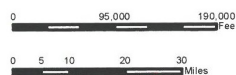
*Darrin Gladbach - Assessor*

Most parcels > 10 ac labeled

**GIS & Map Development By:**



© Copyright Chariton County, MO



- ### Legend
- |  |                    |  |             |
|--|--------------------|--|-------------|
|  | City Limits        |  | US Highways |
|  | Township-Range     |  | ST Highways |
|  | Sections           |  | CO Highways |
|  | Land Grant         |  | Streets     |
|  | Political Township |  | Rail Roads  |
|  | Land Ownership     |  | Streams     |
|  | Subdivisions       |  | Land Hooks  |
|  | Conservation & US  |  | Bridges     |